



40 Huntingwood Drive Huntingwood NSW 2148

Phone: (02) 8825 1999 Website: [www.aeroflowperformance.com](http://www.aeroflowperformance.com)

# INSTALLATION MANUAL

## AEROFLOW PERFORMANCE

### ATTACK OEM SHIFTER

#### WARNING!

BEFORE PROCEEDING WITH INSTALLATION PLEASE READ INSTRUCTIONS CAREFULLY. THIS PRODUCT REQUIRES DETAILED KNOWLEDGE OF AUTOMOTIVE SYSTEMS. WE RECOMMEND THAT THIS INSTALLATION BE CARRIED OUT BY A QUALIFIED AUTOMOTIVE TECHNICIAN.

The shifter mechanism is precision-assembled at our factory. Any modification of the shifter will void its warranty, and can cause it to malfunction.

#### INTRODUCTION

Congratulations on your purchase of AeroFlow Performance Attack OEM shifter. AeroFlow Performance products cannot and will not be responsible for any damage, or other conditions resulting from misapplication of the parts described herein. However, it is our intention to provide the best possible products for our customer, products that perform properly and satisfy your expectations. Should you have any questions? Please call technical support at +61 2 8825 1900 and have the product part number on hand when calling.

The Bang Shift Attack OEM replacement billet shifter handles are perfect for those that want the race orientated look while still retaining your factory OEM automatic shifter assembly. This quick and easy to install handle will enhance any interior of the modern-day car without the hassle of a new shifter assembly. The pistol grip handle is a handy two-piece bolt together design that allows interchangeable billet side plates to be purchased separately. Detent activation is controlled by a trigger lever mechanism that is pulled in towards the gear shifter handle to activate and control the lockout.

This is a direct replacement shifter handle designed specifically to replace a Holden Commodore VZ OEM shifter handle.

*For more information or technical enquires*

*Contact: AeroFlow Performance on*

Phone: (02) 8825 1979 Website: [www.aeroflowperformance.com](http://www.aeroflowperformance.com)

## Shifter Installation Guideline

Take a moment to read and understand these instructions before installing your Attack OEM shifter handle.

Installation of this kit requires permanent modification of some stock parts. We highly recommend that you retain all factory parts.

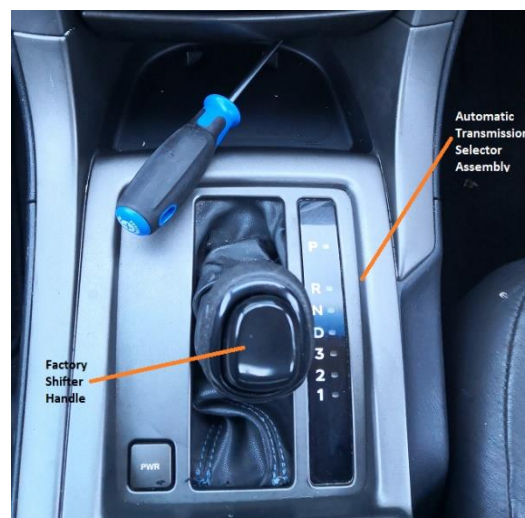
WORK SAFELY! Turn off the ignition, and set the parking brake to prevent the vehicle from rolling during manipulation of the gearshift. Place blocks in front and behind the front wheels to prevent vehicle from rolling.

### DISASSEMBLY OF OEM SHIFTER HANDLE

1. If safe to do so, put the car in neutral. Slide both front seats all the way back to give plenty of clearance.
2. Remove the floor console front compartment liner by lifting upwards from the console cover.



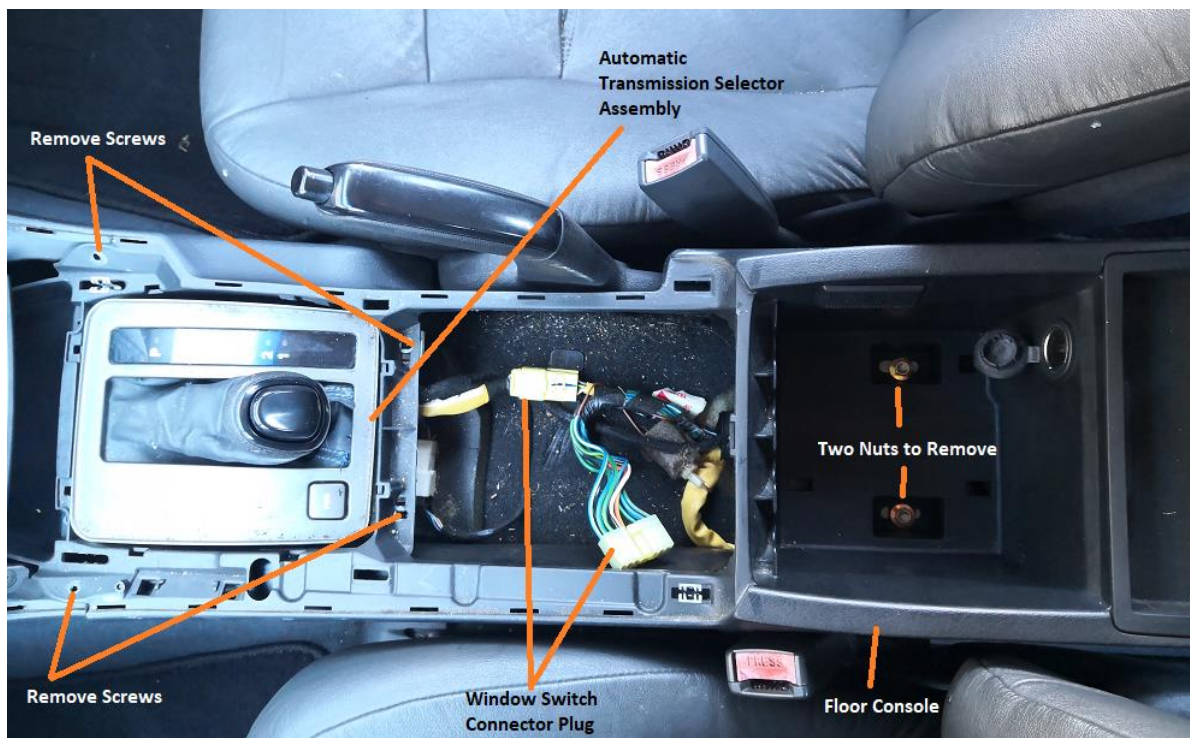
3. Remove the 1 Phillips head screw. This is located on the driver's side attaching the floor console cover assembly.
  - I. **Note:** Vehicles fitted with a navigation system do not have this screw and you can skip this step.



4. Prise the cover assembly from the floor console in the six places shown which are clip into the lower panel trim.
5. Lift the cover assembly up from the rear, disconnect the wiring connector from the side for the window switch assembly and any auxiliaries' switches fitted. Remove and set aside the cover assembly.



6. For the passenger side on the lower extension instrument panel. Remove one screw that is located next to the passenger seat, attaching the floor console to the lower extension instrument panel.
7. For the driver's side the floor console is attached to the lower extension instrument panel via two clips which can be prised off.
8. Remove the floor console compartment liner by carefully grasping the liner and disengaging the two locating lugs.
9. Remove the four screws attaching the console to the automatic transmission selector assembly.
10. Disconnect the wiring connector from the front of the console storage bin.
11. Remove the two nuts attaching the floor console to the vehicle floor.

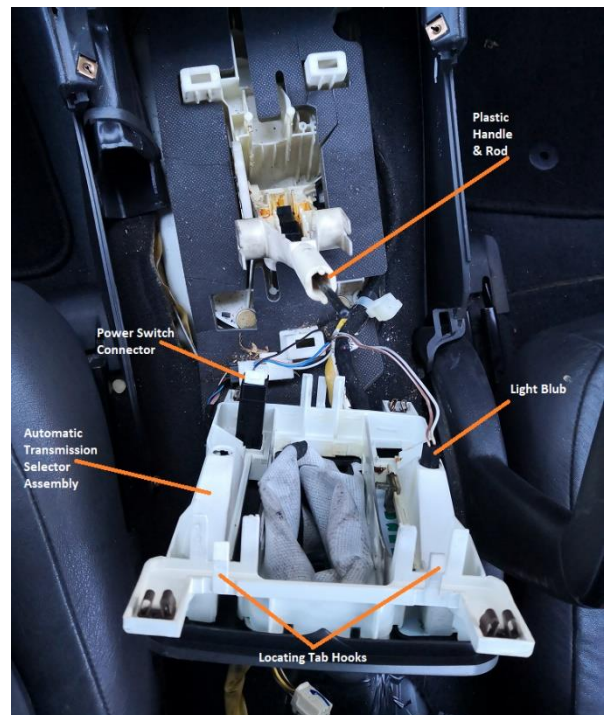


12. Remove the two screws attaching the front of the console to the instrument panel assembly.
13. Lift the rear of the console upward and remove. Set aside the console for now.



14. Remove the one torx bit screw located behind the OEM shifter handle. Ensure to keep this screw as it will be reused for the installation later on.

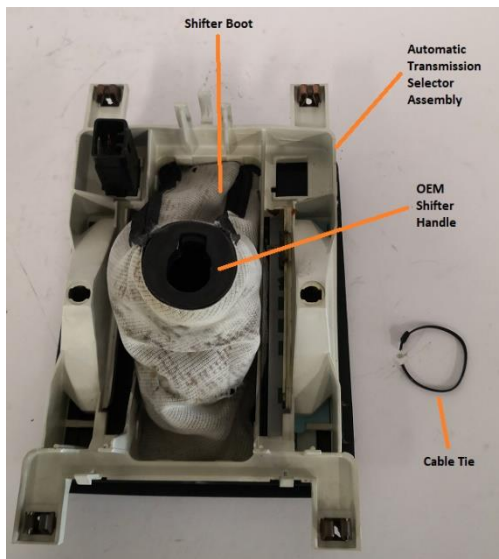
15. Unhook and lift up the selector assembly above the plastic handle.
16. Disconnect the wiring harness for the Power switch assembly and twist the light bulb out from the selector assembly.



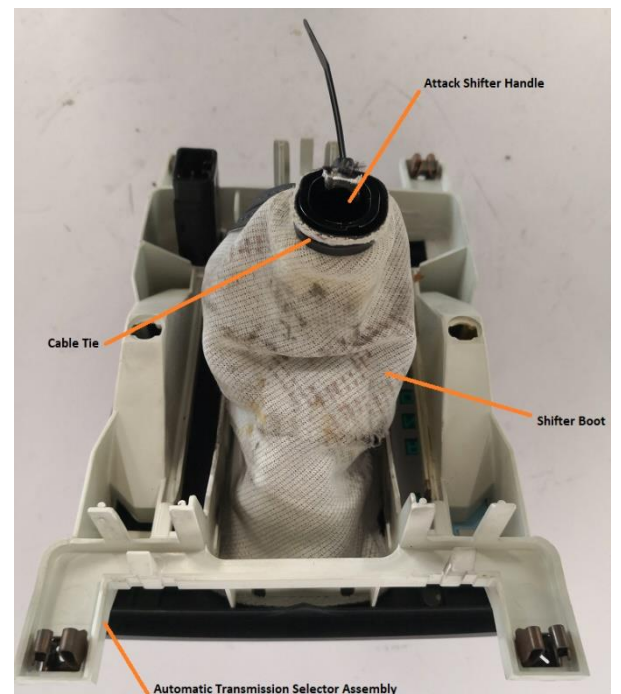
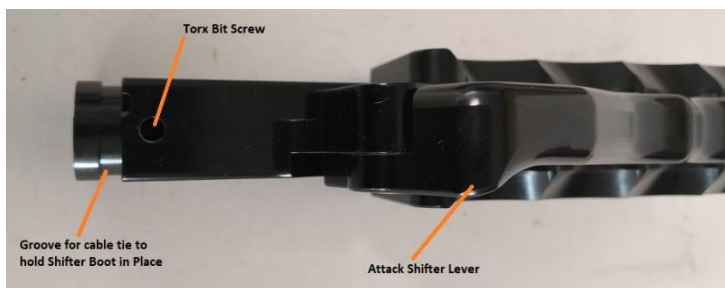
17. Remove the automatic transmission selector assembly from the vehicle and place on workbench.

## INSTALLATION OF ATTACK SHIFTER HANDLE

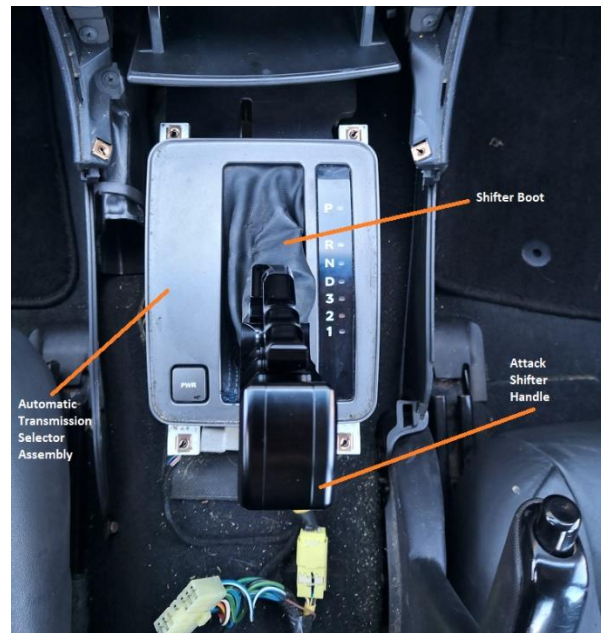
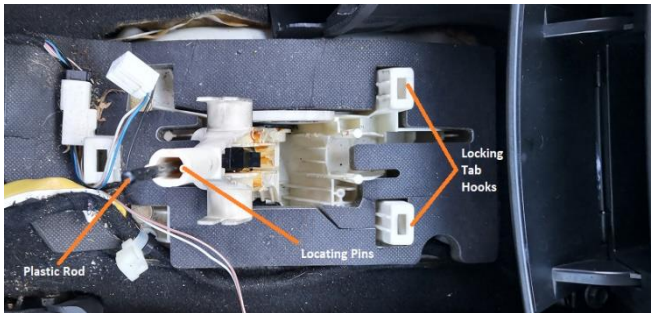
1. Carefully cut off and remove the plastic cable tie holding the shifter boot to the factory shifter handle.



2. Remove the factory shifter handle from the shifter boot and set aside as they are not required anymore.
3. Insert the base new Bang Shift Attack OEM shifter handle through the shifter boot opening, with the trigger lever facing toward the front of the vehicle.
4. Use a cable tie to fasten the boot to the shifter handle. A groove has been placed in the base of the billet Attack shifter, and trim off the excess cable tie.



5. Install the automatic transmission selector assembly with new Attack billet handle onto the vehicle's plastic handle. Ensure the plastic rod sits inside the handle and the handle is pushed down as far as it can go. **The Two locating pins on the OEM factory Console MUST be removed. This can be done with a sharp razor or knife. It must be a flat surface for the shifter handle to sit correctly.** The curved handle base on the Attack Shifter handle should match up with the plastic handle on the vehicle.



6. Once in the correct position the Torx bit screw removed from step 14 can be reinstalled to hold the shifter in place.
7. Run through each gear selection using the Attack handle to ensure each gear is able to be selected.
8. Reinstall the automatic transmission selector assembly, floor console assembly in reverse order from steps 17 back down to 2 in the DISASSEMBLY OF OEM SHIFTER HANDLE section of these instructions.
9. Before driving vehicle on the road ensure to check all functions are working correctly and all gears function as per factory.
10. Congratulations, the installation of your Bang Shift Attack OEM is now complete!

