



40 Huntingwood Drive Huntingwood NSW 2148

Phone: (02) 8825 1999 Website: www.aeroflowperformance.com

INSTALLATION MANUAL

AEROFLOW PERFORMANCE

ATTACK OEM SHIFTER

WARNING!

BEFORE PROCEEDING WITH INSTALLATION PLEASE READ INSTRUCTIONS CAREFULLY. THIS PRODUCT REQUIRES DETAILED KNOWLEDGE OF AUTOMOTIVE SYSTEMS. WE RECOMMEND THAT THIS INSTALLATION BE CARRIED OUT BY A QUALIFIED AUTOMOTIVE TECHNICIAN.

The shifter mechanism is precision-assembled at our factory. Any modification of the shifter will void its warranty, and can cause it to malfunction.

INTRODUCTION

Congratulations on your purchase of AeroFlow Performance Attack OEM shifter. AeroFlow Performance products cannot and will not be responsible for any damage, or other conditions resulting from misapplication of the parts described herein. However, it is our intention to provide the best possible products for our customer, products that perform properly and satisfy your expectations. Should you have any questions? Please call technical support at +61 2 8825 1900 and have the product part number on hand when calling.

The Bang Shift Attack OEM replacement billet shifter handles are perfect for those that want the race orientated look while still retaining your factory OEM automatic shifter assembly. This quick and easy to install handle will enhance any interior of the modern-day car without the hassle of a new shifter assembly. The pistol grip handle is a handy two-piece bolt together design that allows interchangeable billet side plates to be purchased separately. Detent activation is controlled by a trigger lever mechanism that is pulled in towards the gear shifter handle to activate and control the lockout.

This is a direct replacement shifter handle designed specifically to replace a Holden Commodore VT-VX OEM shifter handle.

For more information or technical enquires

Contact: AeroFlow Performance on

Phone: (02) 8825 1979 Website: www.aeroflowperformance.com

Shifter Installation Guideline

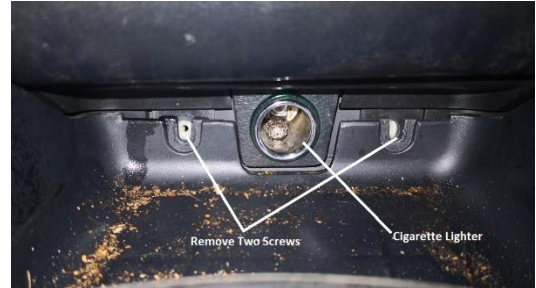
Take a moment to read and understand these instructions before installing your Attack OEM shifter handle.

Installation of this kit requires permanent modification of some stock parts. We highly recommend that you retain all factory parts.

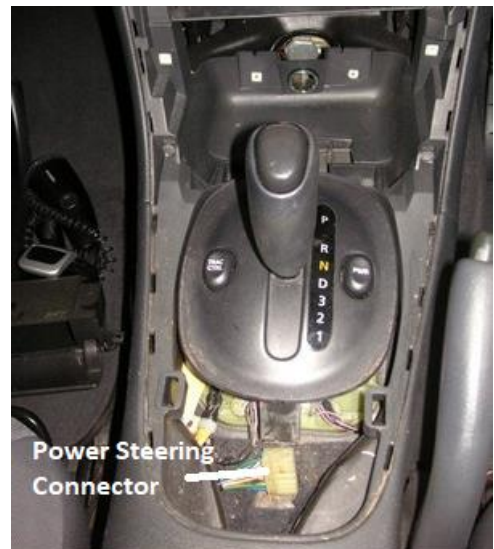
WORK SAFELY! Turn off the ignition, and set the parking brake to prevent the vehicle from rolling during manipulation of the gearshift. Place blocks in front and behind the front wheels to prevent vehicle from rolling.

DISASSEMBLY OF OEM SHIFTER HANDLE

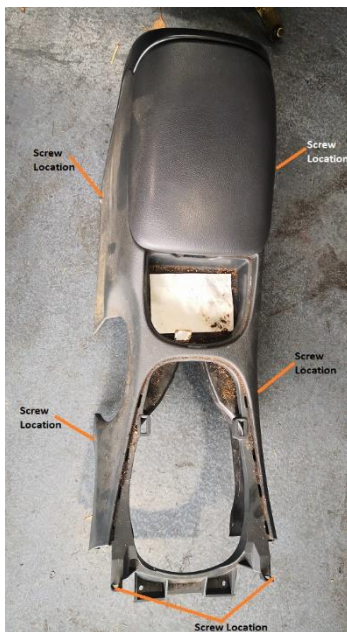
1. If safe to do so, put the car in neutral. Slide both front seats all the way back to give plenty of clearance.



2. First remove the piece surrounding the shifter, to do this you will need to undo the screws on either side of the cigarette lighter.
3. Lift the surrounding piece high enough to undo the plug for the electric windows on the driver's side (if vehicle is not equipped with power windows skip this step).
4. You will now be able to remove this surrounding trim by lifting up on the four corners which are secured via clips.



5. Now you have removed the shifter surround trim you will see 4 screws underneath where the surround trim was, undo these and set aside.
6. There are also another 4 screws that are located on both front passenger rear passenger side of the centre console, as well as the driver's side front and rear. You may need to move the seat forward and backward to gain access to these screws.



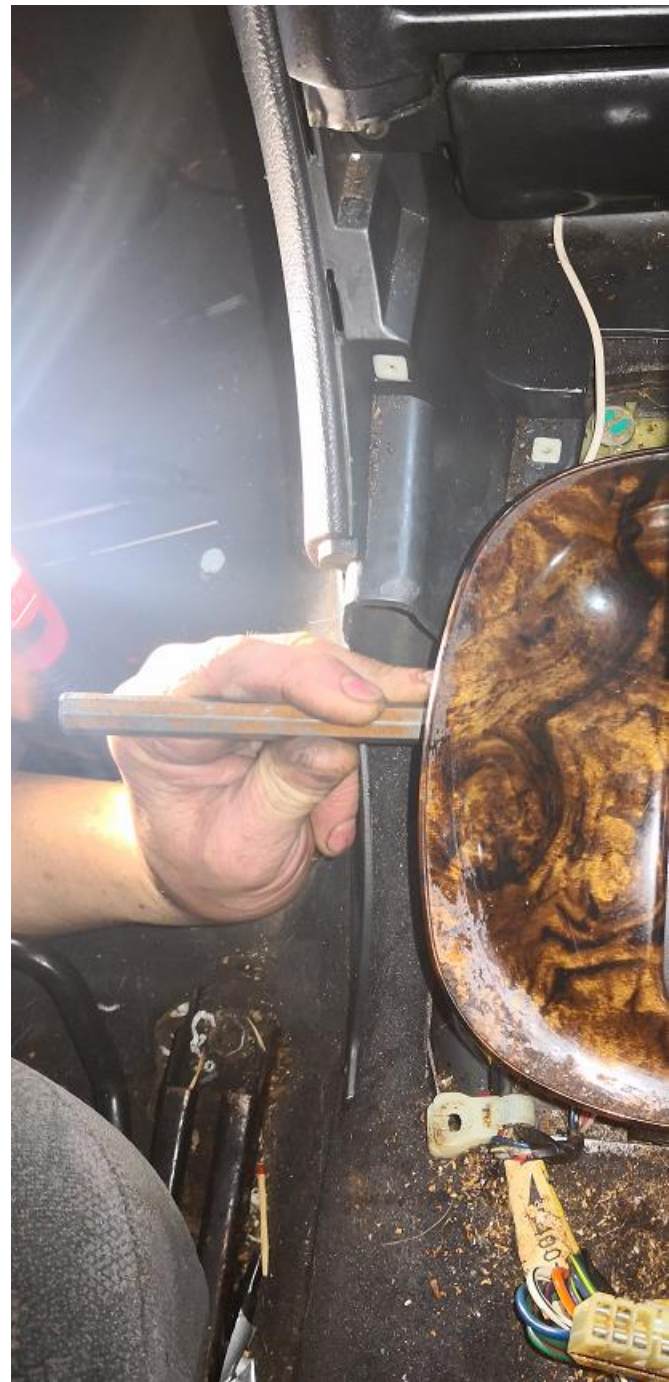
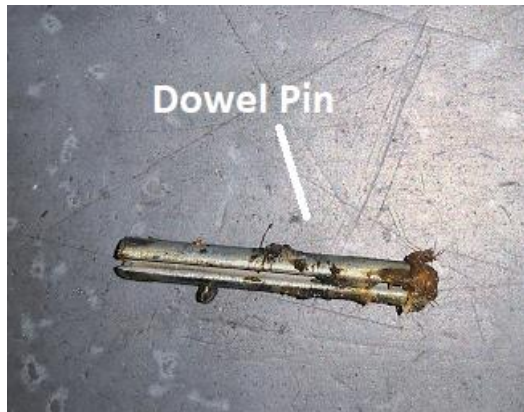
7. Open up the lid on the centre console and remove the rubber mat. you will see two 10mm nuts holding down the console remove these and set aside.



8. Disconnect the wiring harness plug and lift up the centre console and remove from the vehicle out of the way. You may need to move the shift down into the gears and lift the centre console forward to manoeuvre past the shifter assembly.
9. Remove the Phillips head screw on the back of the shifter handle.
10. Look underneath the shifter assembly you will see the shaft goes down into the tunnel. If you push down on the shifter assembly and button you will notice the rod moves downward. Once moved down you will notice a dowel pin that holds the linkage rod to the shifter assembly.



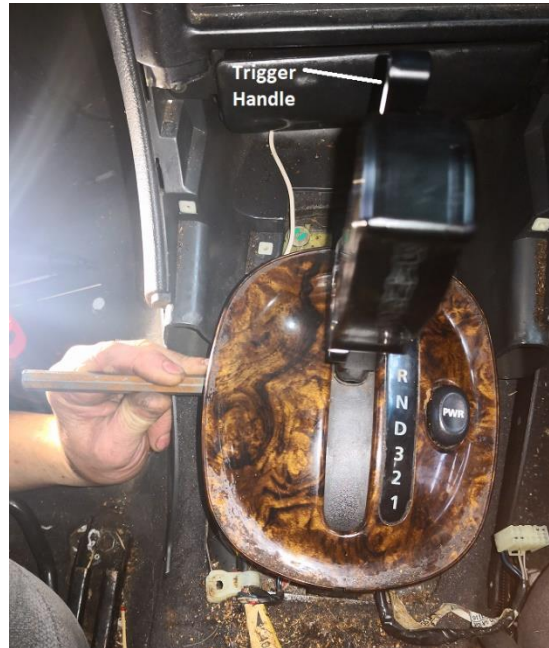
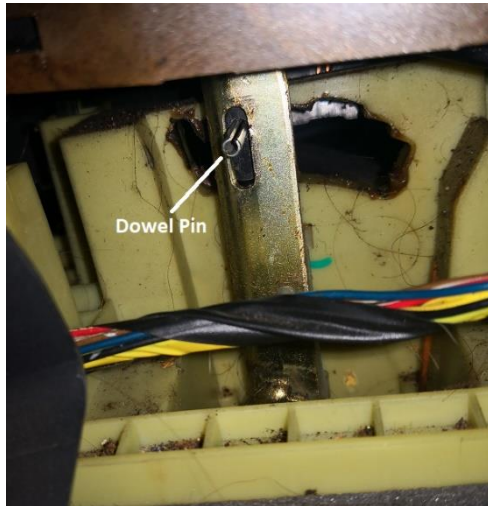
11. Using a punch or pin pusher and a hammer you will need to drive this dowel pin out from its location. We recommend to do this from the passenger side as more access can be had. Be careful not to lose this dowel pin either as it will be reused for the installation.



12. Once the dowel pin is out you will be able to remove the shifter handle from the shifter handle. Just a simple case of lifting it up), take the old shifter button out along with the spring.

INSTALLATION OF ATTACK SHIFTER HANDLE

1. Insert the new OEM Attack shifter handle assembly into the shifter assembly in the vehicle.
 - I. Ensure it is facing the correct way before installing.
 - II. Ensure that the black plastic guard does not fall out of position when inserting the shifter handle.
2. Once the shifter handle is set into place on the shifter assembly. Take the supplied allen key screw and install into the front the of shifter handle. This will hold the shifter handle into place.
 - I. Do not fully tighten just yet. Hand tight is good to hold the shifter handle in place
3. Get the dowel pin removed from step 11/12. We recommend to clean and lubricate this dowel pin before installing it.
4. This part can be a little tricky and may require two sets of hands. The dowel pin will go into the same place it was removed from. This time the trigger handle must be pulled in to active the linkage to drive the rod down to gain access to locate the hole dowel pin.
Ensure the dowel pin and shifter handle line-up before driving the dowel pin all the way through.



5. Once the dowel pin is located all the way. Run through each gear selection using the Attack handle to ensure each gear is able to be selected.
6. Reinstall the centre console trim and also the shifter surround trim. In reverse order from steps 12 back down to 2 in the DISASSEMBLY OF OEM SHIFTER HANDLE section of these instructions.
7. Before driving vehicle on the road ensure to check all functions are working correctly and all gears function as per factory.
8. Congratulations, the installation of your Bang Shift Attack OEM is now complete!

