



40 Huntingwood Drive Huntingwood NSW 2148

Phone: (02) 8825 1999 Website: www.aeroflowperformance.com

INSTALLATION MANUAL

AEROFLOW PERFORMANCE

CONVERSION PLATES

WARNING!

BEFORE PROCEEDING WITH INSTALLATION PLEASE READ INSTRUCTIONS CAREFULLY. THIS PRODUCT REQUIRES DETAILED KNOWLEDGE OF AUTOMOTIVE SYSTEMS. WE RECOMMEND THAT THIS INSTALLATION BE CARRIED OUT BY A QUALIFIED AUTOMOTIVE TECHNICIAN.

Engine swap and conversions may require extra drilling, cutting and/or other modifications to the vehicle. There are many installation factors to consider when performing engine swaps and exact steps may vary from project-to-project. This installation guide offers general instructions for the proper installation of the engine mounts only.

INTRODUCTION

Congratulations on your purchase of Aeroflow Performance GM LS conversion plates. Aeroflow Performance products cannot and will not be responsible for any damage, or other conditions resulting from misapplication of the parts described herein. However, it is our intention to provide the best possible products for our customer, products that perform properly and satisfy your expectations. Should you have any questions? Please call technical support at +61 2 8825 1979 and have the product part number on hand when calling.

These billet aluminium conversion plate adapters are designed as a true bolt in adapter plate for installing a GM LS series engine into various chassis types that use a 3-bolt engine mount. They will place your LS engine in the correct position when swapping from a small or big block Chevrolet engine to a LS series engine and have four different motor mount placement positions:

1st position: places the LS engine in the stock SBC location.

2nd position: places your LS engine forward 7/16" (11mm) from the original SBC location.

3rd position: places your LS engine forward 1-3/4" (44mm) from the original SBC location.

4th position: places your LS engine forward 2-1/4" (57mm) from the original SBC location.

Includes:

1 x driver and passenger side adapter plates

8 x Grade 8 flat head allen key M10 bolts

6 x M10 x 1.5mm flanges bolts and spring washers

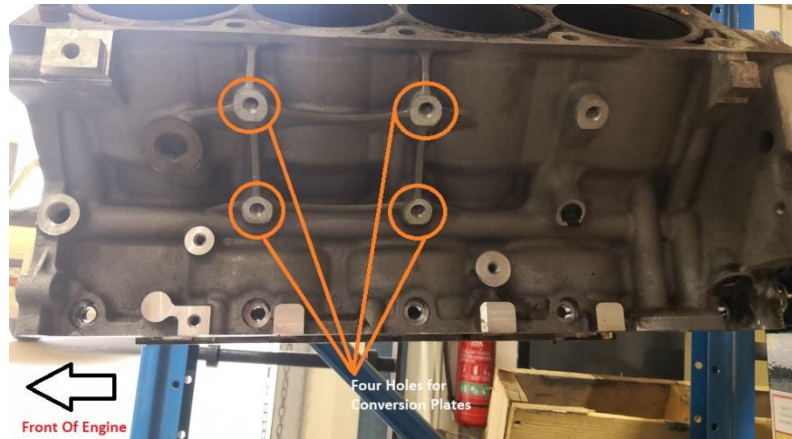


INSTRUCTION GUIDELINES

This installation guide assumes the engine and transmission have already been removed from the chassis. The chassis is prepared to accept the new engine, and all engine mounting devices have been removed from the LS engine being installed, as well as, the chassis.

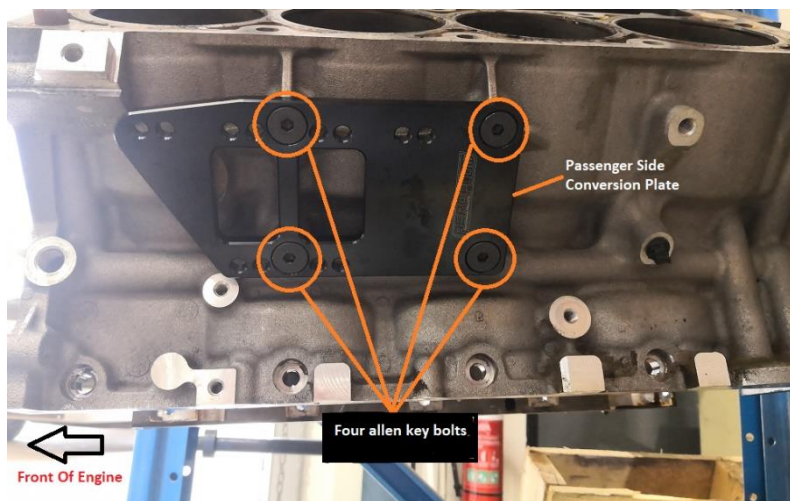
These LS conversion plates will not work with low mount AC compressors.

1. To install this kit's adapter plates, you will be using the four holes in a rectangular pattern, located on both sides of the LS block.

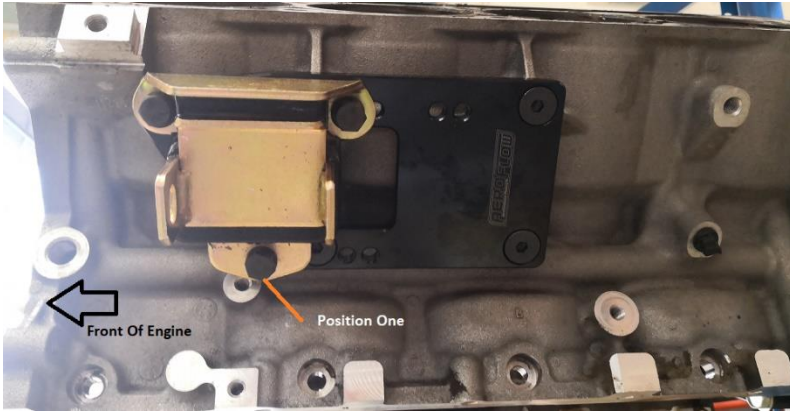


2. Bolt the drivers side LS adapter plate to the driver's side block using four of the Grade 8 flat head allen key M10 bolts. Apply a small amount of removable thread locker to the bolts before threading them into the block.

NOTE: On some LS blocks, the lower, driver side alternator bracket bolt will need to be removed to install the adapter plate.

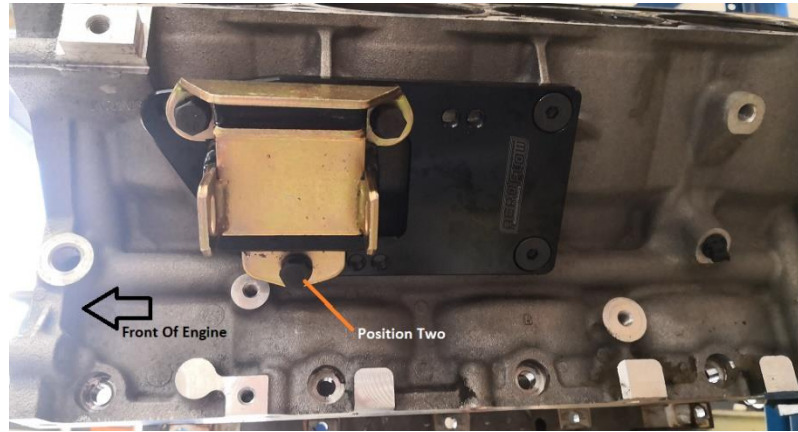


3. Repeat the above step for the passenger's side conversion plate.
4. Now it is time to install the engine mount itself. (this is sold separately and not included in this kit)
NOTE: these conversion plates take early or late style 3 bolt small block chevy and big block chevy engine mounts.
5. With these conversion plates you have 4 different location in which to position the engine and transmission in relation to the chassis.
6. The forward set of holes 1st position will place your bellhousing of the transmission in the same location as the small block chevy. From there you can move the engine mount back to the 2nd, 3rd or 4th position. Each position will push your engine forward from the original position or 1st position.
7. Using the provided M10 flanges bolts you can bolt in the engine mounts to your desired position.

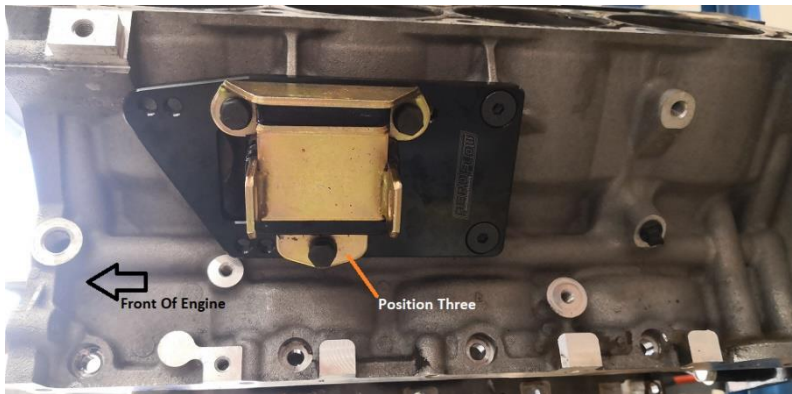


Position One: Places the LS engine in the stock SBC location

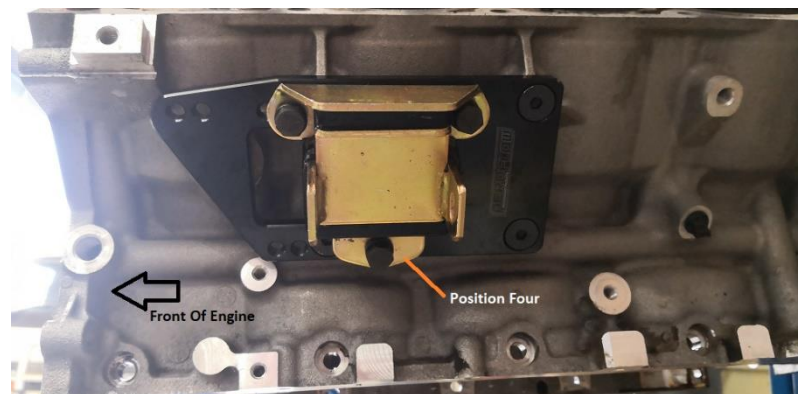
Position Two: Places your LS engine forward 7/16" (11mm) from the original SBC location.



Position Three: Places your LS engine forward 1-3/4" (44mm) from the original SBC location.



Position Four: Places your LS engine forward 2-1/4" (57mm) from the original SBC location.



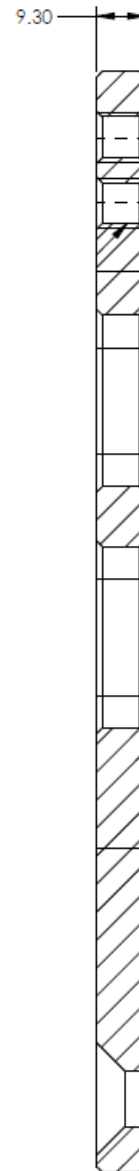
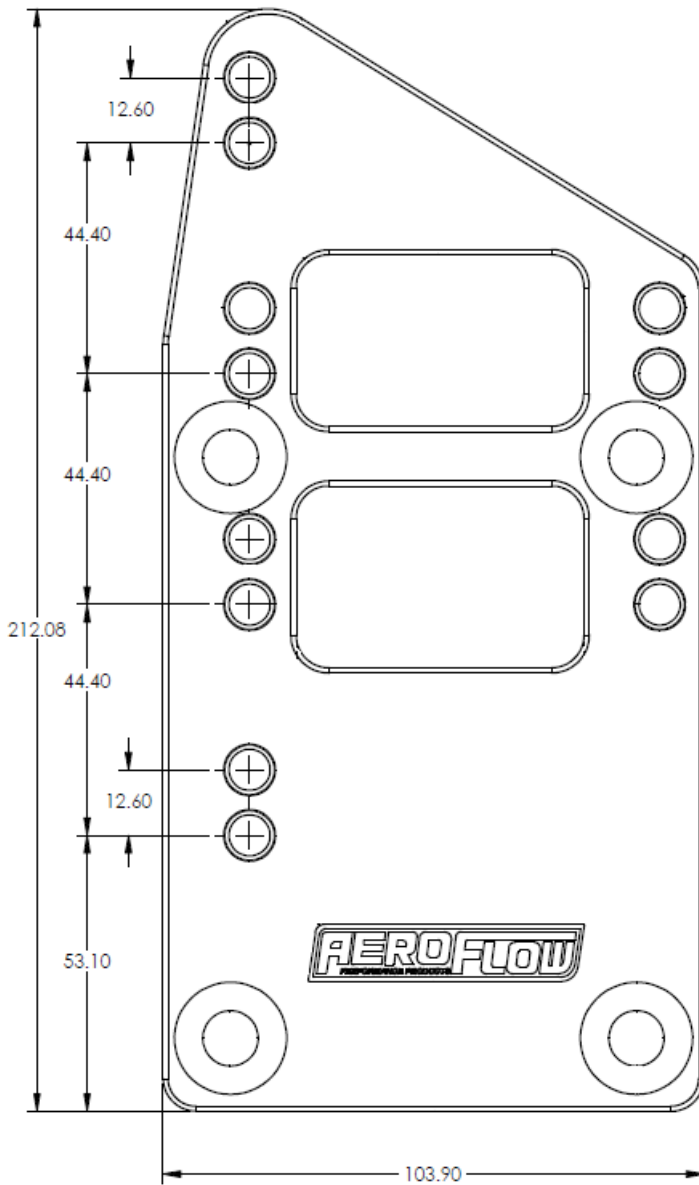
8. Repeat this for other side.
9. Once they are been installed on both sides of the engine you are ready to drop the LS motor into your chassis.

For more information or technical enquires

Contact: Aeroflow Performance on

Phone: (02) 8825 1979 Website: www.aeroflowperformance.com

ALL MEASUREMENTS IN MILLIMETERS



For more information or technical enquires

Contact: Aeroflow Performance on

Phone: (02) 8825 1979 Website: www.aeroflowperformance.com