



Schoenfeld Standard LS1 Port Sprint Headers
(1-3/4"-1-7/8")
SCH-1024LV-LS1



SCHOENFELD Straight Tube Sprintcar Headers
Removes over 200 degrees of bend in comparison to standard headers, increasing flow and horsepower.

- 1-7/8"-2" Std Port - 3-1/2" Collector **SCH-10155LVDN**
- 1-7/8"-2" Spread Port - 3-1/2" Collector **SCH-1055LVDN**
- 1-7/8"-2" All Pro **SCH-1055LVAP**
- 2" All Pro **SCH-1056LAP**

Full range of Schoenfeld Products available by special order.



Adjustable Fuel Tank Clamp Bracket Kit
XXX Sprint Car adjustable tail tank clamp set. Made from super strong aluminium with a black anodized finish. The clamps are CNC lightened to maximize strength and minimize weight. Clamps split in the middle to mount to the tail tank bar, and the bolt heads are recessed to conceal them and protect from debris. Adjustable clamps facilitate the mounting of any brand of fuel tank to the chassis. Sold complete with bolts.
ID (for tank bar): 1.375"
Colour: Black Anodized
TXRC-SC-CH-7250



SALDANA Smart Trap Tank Assemblies
This design allows you to pick up almost every drop of fuel. The Smart Trap is lighter and more cost effective than that of other designs on the market.
28 Gal. Smart Trap Sprint Tank
SAL-OS228ST-T

Available in all Bladder sizes.



Cover Plate
.63 Aluminium Cover Plate with Screws.
SAL-SAC-002



Blank Cover Plate
Blank Bottom Cover Plate.
SAL-SAC-003



Rollover Valve
SAL-SAC-009



Flush Cap
Alum. Flush Cap only.
SAL-SAC-017



Gasket
Top Plate Gasket.
SAL-SAC-N-006



Cap, Plate, Valve
Aluminium Flush Cap, Plate, & Rollover Valve.
SAL-SAC-011



Top Plate Assembly
Flush Cap, Plate, Rollover Valve, Bolts and Gasket. **SAL-SAC-019**



SPP Titanium Button Head Bolt Top Fuel Plate Kit (x12)
SPPTFT-KIT



Nylon Washer
SAL-NYLON12



12 Bulkhead
SAL-SAC-021

MUFFLERS



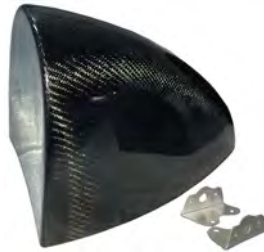
SCHOENFELD 95 DB Muffler
3-1/2" Inlet & Outlet,
14" Long With
4-1/2" O.D Body
SCH-14272735-78



SCHOENFELD Knoxville Mufflers
These mufflers are designed to control noise down to 100dba from 100 feet for 410 Sprintcars. Straight through design, 3-1/2" inlet and outlet.
SCH-112535



SCHOENFELD Exhaust Durn Downs
3" **SCH-3025**
3-1/2" **SCH-3525**



XXX Carbon Fibre Aero Fuel Tank Cover
TXRC-SC-BW9933CF

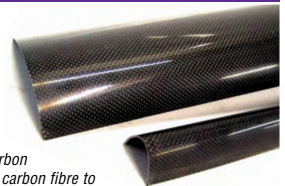


SALDANA Outlaw Tank Assemblies
Supplied with -12 top pickup, and all accessories to complete the fuel cell assembly including: flush cap assembly, front cover plate and bladder.
25 Gal. Sprint Tank **SAL-SB225**
25 Gal. Sprint Tank - w/ Internal Baffle **SAL-SB225-B**
28 Gal. Sprint Tank **SAL-SB228**
28 Gal. Sprint Tank - w/ Internal Baffle **SAL-SB228-B**
33 Gal. Sprint Tank - w/ Internal Baffle **SAL-OS234B-T**

TOP WINGS & ACCESSORIES



HRP Wing Caps
Available in simulated carbon fibre look plastic, or true carbon fibre to protect the front of your wing.
Top Wing Cap - Plastic **HRP-8830**
Top Wing Cap - Carbon Fiber **HRP-8831**
Nose Wing Cap - Plastic **HRP-8833**
Nose Wing Carbon - Carbon Fiber **HRP-8834**



HRP Wings
HRP's exclusive recessed rivet design, provides increased strength and aerodynamic efficiency. Centre sections are assembled, leaving you to choose and fit the pre CNC punched and assembled side boards of your choice.

FUEL TANKS & ACCESSORIES



LRB Upper Fuel Tank Mounts
These clamp onto the horizontal bar in front of the tank. Adjustable to accommodate perfect alignment of the top fuel tank bolts. Made from solid billet 6061 aluminium.
LRB-F1BRKT-B



MOOSE Fuel Cell Mounts
Black anodized billet aluminium clamps allow for easy fuel cell installation at the top. Clamps swivel on horizontal tube to align perfectly with the shell.
MOO-4500

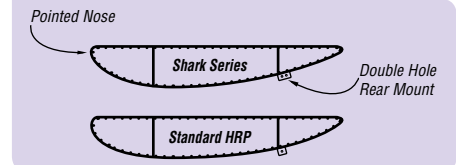
SALDANA "Outlaw" Shell Only
25 Gal Sprint Shell **SAL-ST125**
28 Gal Sprint Shell **SAL-ST128**
33 Gal. Sprint Shell **SAL-OS33**



SALDANA Outlaw Bladders
Stronger and 25% lighter than any on the market.
25 Gal Sprint Bladder **SAL-SB125T**
28 Gal Sprint Bladder **SAL-SB128T**
28 Gal Sprint Bladder - w/ baffle **SAL-SB128B-T**



SALDANA Light Weight Top Plate Assembly
The new light weight Saldana top plate assembly features a screw on cap with a built in rollover / vent valve and one -BAN and two -6AN ORB return ports to accommodate for simple plumbing.
SAL-SAC-061





HRP Racer Series Wings

High Quality, Low Cost Racer series wings feature HRP's recessed rivets, super right hand sideboard and are available in 2 1/2" dish or flat centre profiles. Flat packed in shipping tubes, the Racer series wings include top wing posts and a wicker.

2 1/2" Dish Racer Wing Kit with Super Board **HRP-RCR0500-DKIT**
 Flat Dish Racer Wing Kit with Super Board **HRP-RCR0500-FKIT**



TOP WING KITS

Description	Part No
Top Wing 2.5" Dished Recessed Rivet 8° Super Board Rolled Kit, .016 2024 T3 Aluminium	HRP-SKD0512-S8K

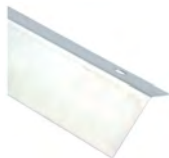
HRP Shark Top Wing

New Shark Series Top wing features Aerodynamic Front Caps, Dove Tailed Rear Edges, Double Rear mount holes, Pointed Aerofoil Nose, and the same unsurpassed quality along with being in a lighter package.

HRP-SHK0512



HRP SHARK Carbon Fibre Wing Cap
HRP-8829



HRP SHARK Wickers

1" Shark Wicker	HRP-8855
2" Shark Wicker	HRP-8856
3" Shark Wicker	HRP-8857



HRP Top Wing Wicker Bills

HRP Wickers dzus fasten into place.

1" Wicker Bill
 2" Wicker Bill
 3" Wicker Bill



HRP-8860
HRP-8861
HRP-8862

HRP Shark Wing Cap

Plastic simulated Carbon Fibre look.

HRP-8837



HRP Wing Rivet Kit

Rivet kit contains enough to assemble sideboards and braces to centre.

Raw **HRP-VFT9001**
 Black **HRP-VFT9001-BLK**
 White **HRP-VFT9001-WHT**



HRP Nose Wing Rivet Kit

Rivet kit contains enough to assemble sideboards to centre.

HRP-VFT9010

HRP Wing Individual Replacement Parts.
 Please call Rocket for more details.

TOP WING POSTS



HRP Easy Glide Top Wing Post

Forged "T" section and edges are radiused so there is no drag. Contoured bottom lets the belly of the Wing slide perfectly. Tig Welded for ultimate strength, and chromoly posts are chrome plated.

Easy Glide Wing Post – Titanium **HRP-8810**
 Easy Glide Wing Post – Chromoly **HRP-8811**



XXX Top Wing Post

- Length: 12" - where wing sits to bottom of post
- Material: Plated 4130 Chrome moly
- Wall Thickness: .080"
- "T" Diameter: 5/16"
- "T" Height: 1/2" - from where wing sits to bottom of "T"
- Weight: 0.8 lb

TXRC-SC-TW-0004



HRP Easy Glide 75 degree Top Wing Post

HRP-8811-A75



SPP Wing Post Pinch Bolt
 5/16-24 x 1-1/2"
SPPHH312-24-1500

WING TREES



HRP Tubular Wing Tree

Chrome plated chromoly fully adjustable tree, makes height changes simple and fast. Suitable for HRP wings on XXX, J&J, Maxim and all the later model chassis. Available in 15" or 17" overall height.

HRP 15" Wing Tree **HRP-8080-15**
 HRP 17" Wing Tree **HRP-8080-17**

HRP Wing Tree Inserts

Steel or titanium inserts, will fit either HRP or Triple X wing trees. Available with 1/4" or 3/16" adjustment holes.

Insert w/ 1/4" Holes **HRP-8085**
 Insert w/ 3/16" Holes **HRP-8085-203**
 Titanium Insert w/ 1/4" Holes **HRP-8085-TIT**



HRP Wing Tree Ring Clips

Suitable for locking the adjustment on the wing tree.

Locking Ring **HRP-5920**
 3/16" Pin **HRP-5921**

HRP Wing Tree Hitch Pins

Quick release pins to suit wing tree adjusters. Available for 1/4" or 3/16" O.D holes in the wing tree. Sold individually.

1/4" Pin **HRP-8084**
 3/16" Pin **HRP-8084-187**



HRP Aero Tree - Insert Only

HRP-8083



XXX Top Wing Tree

Plated 4130 Chromoly. Adjustment holes in 1" increments, with 6" total adjustment. "X" design for lateral and horizontal strength.

- Width At Top: 26" • Width At Bottom: 25-3/4" / 26-1/2"
- Height: 18" - 24" • Diameter: 3/4" • Wall Thickness: .060"
- Wing Slider Mount: 3/8" Hole • Wing Mounts: 3/8" Hole
- Weight: 3.75lbs

XXX Wing Tree - Chrome

XXX Wing Tree - Black

TXRC-SC-TW-0002

TXRC-SC-TW-0002B



Sprint Car 16" Top Wing Tree

Top wing tree. 16" tall. 1" adjustment holes, with a total of 6" of adjustment. "X" design for lateral and horizontal strength. An important accessory for X Wedge design cars, the 16" tree helps you keep the back or your top wing lower, giving you the perfect top wing tilt for high speed tracks. Adjuster pins not included.

Plated - **TXRC-SC-TW-0033**

Black - **TXRC-SC-TW-0033B**



XXX Aero Wing Tree

Made from aero, plated 4130 chromoly (squish) tube. Aluminium adjusters with holes at 3/4" increments, and 3" total adjustment. "X" design for lateral and horizontal strength.

- Width: 26-1/4" • Height: 18-1/4" to 21-1/4"
- Wing Slider Mount: 3/8" • Wing Mounts: 3/8" hole • Weight: 3.75lbs

TXRC-SC-TW-0011B Black finish



XXX Tubular Wing Tree Adjusters

Diameter: 5/8" Height: 10" Top edge to centre of boss.

TXRC-SC-TW0012B

SPP Titanium Wing Tree Pin

1/4" with clip

SPPPIN-250-840



WING RAMS



HRP Manual Wing Slider

Aluminium body complete with rod ends and quick release pin.

HRP-8559 Manual Wing Slider

FK Wing Ram Rod End

Aluminium 3/8" x 3/8" female rod end to suit wing rams with 3/8" shaft.

FK-ALJF6



KSE STINGRAY HIGH PRESSURE WING CYLINDER (RAM)

8" STROKE RAM

10" STROKE RAM

10" WING RAM REBUILD KIT

8" WING RAM REBUILD KIT

KSG2001-008

KSG2001-010

KSG2007

KSG2007-8





SWEET Wing Rams

Built for high pressure and quick movement, this cylinder rounds out the complete system for a quick and consistent wing slider assembly. Sweet's 8.5" & 10" stroke wing cylinder specifically designed for oil use! Mate with Sweet valve for optimum performance. Rated to 1300 psi!

8.5" Travel Ram **SWE306-10210**
10" Travel Ram **SWE306-10200**

Rod End
Ram Seal Kit
Replacement 10" Shaft
Replacement 8.5" Shaft

SWE331-43037
SWE331-43040
SWE331-44005
SWE331-44013



HRP 8" Wing Ram **HRP-8550**
HRP 10" Wing Ram **HRP-8551**



SPP Titanium Wing Ram Clevis Pin

3/8 x .750" **SPPPIN-375-750**

SPP Wing Ram to Tree Bolt
3/8-24 x 1-1/2"
SPPHH375-24-1500



MPD Wing Slider Clevis
MPD-035810

BMRS 35" -3AN Hose STR-90 suit Sweet Ram
RS-GOD05-006

BMRS 22" -3AN Hose STR-90 suit Sweet Ram
RS-GOD05-010

JIFFY TITE Male Quick Release

Dry Break 1/8 NPT (-3AN)
RS-JIF22802

JIFFY TITE Male Quick Release

Dry Break 1/8 NPT (-4AN)
RS-JIF22403

JIFFY TITE Female Quick Release Dry Break-3AN
RS-JIF21403J

JIFFY TITE Female Quick Release Dry Break -4AN
RS-JIF21404J

WING VALVES

KSE Stingray Wing Valve

Utilizes high flow porting and precision seal technology for superior performance. Three piece billet aluminium design is as much as 30% lighter than other valves available.
KSG2000



Weld On Wing Tab for Sweet Wing Valve

Mounts at 90 degrees suitable for Sweet valve only.
RS-3011727

SWEET Wing Valve

Sweet wing valve was designed with direct plumbing from the steer pump, allowing constant max pressure. This allowing quick wing adjustment without having to turn the wheel. Must use sweet cylinder steer pump and valve together.
SWE306-10100



NOSE WINGS



HRP SHARK NOSE WING

- Race proven aerodynamic shape
- Rigid sideboard design
- Replaceable components
- Front aero caps
- Full kickets
- .060" 2024 aluminum 1" tall wicker bill
- .020" thick 6061 aluminum skin
- Incorporates replaceable components

HRP SHARK NOSE WING

LH Shark Nose Board
RH Shark Nose Board

HRP-SHK0802-S
HRP-SHK1062
HRP-SHK1063



HRP Nose Wings

HRP offer 1" or 2" dish front wings with both inner and outer mounting positions. Optioned with Tall square sideboards, or super angled sideboards.
2" Dish - Super Board Angled
2" Dish - Tall Board

HRP Nose Wing Side Boards

L/H Super Board - 1" Dish
R/H Super Board - 1" Dish
L/H Super Board - 2" Dish
R/H Super Board - 2" Dish

HRP-VFT1058
HRP-VFT1059
HRP-VFT1058-2
HRP-VFT1059-2



HRP Nose Wing Brace

Strengthens the sideboard to the centre.
HRP-VFT9061

HRP Nose Wing Mounting Tabs

Nose wing mounting stab, suitable for inner or outboard mounts.
HRP-VFT1003

HRP Nose Wing Wickers

1/2" Aluminium Wicker
1" Aluminium Wicker

HRP-VFT1093
HRP-VFT1094

NOSE WING MOUNTS



DMI Nose Wing Posts

CNC bent aluminium 1" posts.
Straight Front Wing Post
Bent Front Wing Post

DMI-SRC2900
DMI-SRC2910



HRP Straight Nose Wing Posts

HRP 1" straight nose wing posts.

Stainless Nose Wing Post

HRP-8004.SS

Titanium Nose Wing Post

HRP-8004.TIT



HRP Bent Forward Nose Wing Posts

HRP 1" bent forward nose wing posts are available in stainless steel or titanium.

Stainless RH Nose Wing Post

HRP-8058

Stainless LH Nose Wing Post

HRP-8058-L

Titanium Nose Wing Post

HRP-8059

Titanium Nose Wing Post

HRP-8059-L



HRP Aero Nose Wing Posts & Clamps

Aluminium clamps mount on an angle on torsion tubes. Aero post are straight and bolt to the nose wing sideboard.

LH Aero Clamp

HRP-8054LH

RH Aero Clamp

HRP-8054RH

LH Aero Tube Post

HRP-8055L

RH Aero Tube Post

HRP-8055R



BHR Centre - Side Board Mount Nose

Wing Posts - Pair

BHR045



HRP Stainless Steel 3/4" Straight

Nose Wing Post

HRP-8060



HRP 4130 Nose Wing Clamps

Fabricated to suit 1" O.D posts, and utilise a single pinch bolt to secure to the torsion tube.
HRP-8018

3/4" Round Nose Wing Mount

Fits 3/4" tube. Constructed from Aluminium.
HRP-8158



XXX 3/4" Nose Wing Posts

Plated 4130 Chromoly, bent to mount on spuds on torsion tubes to nose wing sideboards. Right side is 3/4" longer than left side. Sold individually.

Right Hand
Left Hand

TXRC-SC-TW-0025
TXRC-SC-TW-0026



SPP Nose Wing to Post
1/4-28 x 5/8"
SPPHH-250-28-625

SPP Wing Post Pinch Bolt
5/16-24 x 1-1/2"
SPPHH312-24-1500



Black Nose Wing Aero Rear Strap

Nose Wing Aero Rear Strap. Black. Tabs on both ends to pick up chassis, and attach to nose wing side board Sold individually.
TXRC-SC-TW-0021B

Black Nose Wing Post 1"

Nose Wing Front Post. Black 4130. Center Mount. For use with nose wing post clamps that go into the torsion tube pinch clamps and attach to the center of the nose wing.
1" TXRC-SC-TW-0028B
1" Bent Forward Design TXRC-SC-TW-0023B



XXX Aero Nose Wing Strap

Stainless steel strap bolts from chassis, to nose wing side board. Height: 9.5", 10.25" and 11" Holes: 1/4" Weight: 0.38 lbs
 TXRC-SC-TW-0021



HRP Maxim 3 Hole Nose Wing Straps

4130 Chromoly, black powdercoated. Suitable for Maxim or Triple X style chassis mounting to the side board of the nose wing. Available in lengths described below with 5.187" offset.
10.25" - 9.50" - 8.75" Long HRP-8114-H3-1
7.50" - 6.75" - 6.0" Long HRP-8114-H3-4



HRP Maxim Nose Wing Straps

4130 Chromoly, black powdercoated. Suitable for Maxim or Triple X style chassis mounting to the side board of the nose wing. Available in lengths described below with 5.187" offset.
11" Long HRP-8114-MAX11
9" Long HRP-8114-MAX9
8.5" Long HRP-8114-MAX8.5



HRP J&J Nose Wing Straps

4130 Chromoly, black powdercoated. Suitable for J&J style chassis mounting to the side board of the nose wing. Available in lengths described below with 6.0" offset.
11" Long HRP-8114-JJ11
9" Long HRP-8114-JJ9



U-JOINTS



DMI Uni Joints

The strongest in the industry – all DMI uni joints are supplied with Gladiator crosses, which never need servicing, making a strong assembly even stronger. Suit Chev / Mopar crankshaft. Spring & washer and bolts included.

- Titanium Uni w/Alloy Yoke DMI-SRC2322
- Full Titanium Uni DMI-SRC2323
- Full Alloy Uni 16 spline DMI-SRC2325
- Full Alloy Uni 32 spline DMI-SRC2325-32
- 2K11 H.D. Aluminium 32 Spline DMI-SRC2355-32
- Steel Uni w/ Alloy Yoke DMI-SRC2345
- Uni Spring & Washer DMI-SRC2327
- Replacement Gladiator Cross DMI-SRC2336

Winters Performance Hercules U-Joint

The NEW heavy duty yoke and crank flange capsulates and centers joint assembly. U-Bolts securely retain the joint assembly eliminating clips. Machined from 7075 billet aluminum. 7075 Billet Aluminum
RS-WINT4950-16 16 Spline
RS-WINT4950-32 32 Spline

WINTERS 32 Spline Uni Joint

All aluminium 32 Spline Uni works with new Winters 32 Spline Driveshaft
RS-WINT3700-32



SPP Titanium Uni Joint Bolts
 7/16"-20 x .875" 4 Pack
SPPRH-437-20-875



DMI Heavy Duty Steel Uni Bolt Kit.
DMI-SRC2312

TORQUE BALLS, HOUSINGS & TUBES



MPD Light Weight Billet Torque Tube

The finest torque tube available. Precision machined from 2024 billet aluminium. Flawlessly true, O.D 3" for greater torque ball surface area. Must be used with MPD Ball and Housing.
MPD-06460127

MPD Torque Ball

Machined from billet aluminium tube and hard anodised for extra durability.
MPD-064203

MPD Billet Ball Housing

Machined inside and out makes it super light. The unit is designed to keep the centre line closer to the uni pivot point. Removable collar allows for easy inspection, cleaning and greasing of the ball and uni.
MPD-068202

DMI Light Weight Torque Ball

Light and durable hard anodised alloy torque ball, suitable for all DMI housings and torque tubes. Also interchangeable with Winters driveline parts.
DMI-SRC2380
Replacement Ball for WP Style Driveshaft
DMI-SRC2444



DMI Torque Tubes

DMI torque tubes are machined on O.D. and I.D. for trueness. They are 28" long overall and available in Light Weight or Heavy Duty versions, the collars are anodised black.

- Torque Tube w/ HD Base – 6.91lbs **DMI-SRC2390**
- Torque Tube w/ LW Base – 6.66lbs **DMI-SRC2393**
- Torque Tube w/ LW Base – 6.66lbs – Black **DMI-SRC2393B**

DMI Big Unit Torque Tube

DMI-SRC2387



DMI Body Armour Torque Ball Housing

The strongest steel housing on the market. Ball is perfectly aligned with uni centreline. Alloy inserts are replaceable. So you do not have to throw the whole assembly away. Also protects the driver from driveline explosions. Also interchangeable with Winters driveline parts.
Body Armour Housing **DMI-SRC2305**
Replacement Insert **DMI-SRC2309**

SCI Torque Tube

Newly designed torque tube aims to reduce flex, taking the whip out of the driveline, creating less vibration and strain on the u-joint and car. Available in 2.990" or 3.0"
RS-SCI-1128 3.000"
RS-SCI-1128-2.9 2.990

SEALS-IT Drive Line Seal

Great for keeping the dirt and grit out of the inside of your ball and torque tube. Suits many different housing designs, with SBC or Mopar Crank flanges.
DMI-SRC2301

Kevlar Torque Housing Blanket

Made from Kevlar for ultimate protection around your feet and legs. Also, fast and easy to get in and around the housing for maintenance.
RS-KRP326



BUTLER Torque Tube Pad
RS-BUT-BBP-4810