



Schoenfeld Standard LS1 Port Sprint Headers
(1-3/4"-1-7/8")
SCH-1024LV-LS1



SCHOENFELD Straight Tube Sprintcar Headers
Removes over 200 degrees of bend in comparison to standard headers, increasing flow and horsepower.

- 1-7/8"-2" Std Port - 3-1/2" Collector **SCH-10155LVDN**
- 1-7/8"-2" Spread Port - 3-1/2" Collector **SCH-1055LVDN**
- 1-7/8"-2" All Pro **SCH-1055LVAP**
- 2" All Pro **SCH-1056LAP**

Full range of Schoenfeld Products available by special order.



Adjustable Fuel Tank Clamp Bracket Kit
XXX Sprint Car adjustable tail tank clamp set. Made from super strong aluminium with a black anodized finish. The clamps are CNC lightened to maximize strength and minimize weight. Clamps split in the middle to mount to the tail tank bar, and the bolt heads are recessed to conceal them and protect from debris. Adjustable clamps facilitate the mounting of any brand of fuel tank to the chassis. Sold complete with bolts.
ID (for tank bar): 1.375"
Colour: Black Anodized
TXRC-SC-CH-7250



SALDANA Smart Trap Tank Assemblies
This design allows you to pick up almost every drop of fuel. The Smart Trap is lighter and more cost effective than that of other designs on the market.
28 Gal. Smart Trap Sprint Tank
SAL-OS228ST-T

Available in all Bladder sizes.



Cover Plate
.63 Aluminium Cover Plate with Screws.
SAL-SAC-002



Blank Cover Plate
Blank Bottom Cover Plate.
SAL-SAC-003



Rollover Valve
SAL-SAC-009



Flush Cap
Alum. Flush Cap only.
SAL-SAC-017



Gasket
Top Plate Gasket.
SAL-SAC-N-006



Cap, Plate, Valve
Aluminium Flush Cap, Plate, & Rollover Valve.
SAL-SAC-011



Top Plate Assembly
Flush Cap, Plate, Rollover Valve, Bolts and Gasket. **SAL-SAC-019**



SPP Titanium Button Head Bolt Top Fuel Plate Kit (x12)
SPPTFT-KIT



Nylon Washer
SAL-NYLON12



12 Bulkhead
SAL-SAC-021

MUFFLERS



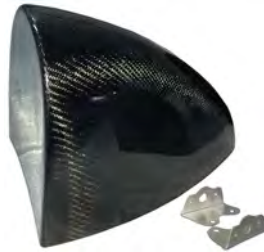
SCHOENFELD 95 DB Muffler
3-1/2" Inlet & Outlet,
14" Long With
4-1/2" O.D Body
SCH-14272735-78



SCHOENFELD Knoxville Mufflers
These mufflers are designed to control noise down to 100dba from 100 feet for 410 Sprintcars. Straight through design, 3-1/2" inlet and outlet.
SCH-112535



SCHOENFELD Exhaust Durn Downs
3" **SCH-3025**
3-1/2" **SCH-3525**



XXX Carbon Fibre Aero Fuel Tank Cover
TXRC-SC-BW9933CF



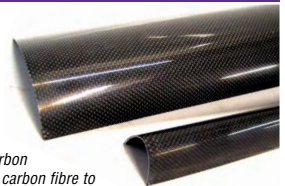
SALDANA Outlaw Tank Assemblies
Supplied with -12 top pickup, and all accessories to complete the fuel cell assembly including: flush cap assembly, front cover plate and bladder.
25 Gal. Sprint Tank **SAL-SB225**
25 Gal. Sprint Tank - w/ Internal Baffle **SAL-SB225-B**
28 Gal. Sprint Tank **SAL-SB228**
28 Gal. Sprint Tank - w/ Internal Baffle **SAL-SB228-B**
33 Gal. Sprint Tank - w/ Internal Baffle **SAL-OS234B-T**



TOP WINGS & ACCESSORIES



HRP Wing Caps
Available in simulated carbon fibre look plastic, or true carbon fibre to protect the front of your wing.
Top Wing Cap - Plastic **HRP-8830**
Top Wing Cap - Carbon Fiber **HRP-8831**
Nose Wing Cap - Plastic **HRP-8833**
Nose Wing Carbon - Carbon Fiber **HRP-8834**



HRP Wings
HRP's exclusive recessed rivet design, provides increased strength and aerodynamic efficiency. Centre sections are assembled, leaving you to choose and fit the pre CNC punched and assembled side boards of your choice.

FUEL TANKS & ACCESSORIES



LRB Upper Fuel Tank Mounts

These clamp onto the horizontal bar in front of the tank. Adjustable to accommodate perfect alignment of the top fuel tank bolts. Made from solid billet 6061 aluminium.
LRB-F1BRKT-B



MOOSE Fuel Cell Mounts

Black anodized billet aluminium clamps allow for easy fuel cell installation at the top. Clamps swivel on horizontal tube to align perfectly with the shell.
MOO-4500

SALDANA "Outlaw" Shell Only

- 25 Gal Sprint Shell **SAL-ST125**
- 28 Gal Sprint Shell **SAL-ST128**
- 33 Gal. Sprint Shell **SAL-OS33**



- 25 Gal Sprint Bladder **SAL-SB125T**
- 28 Gal Sprint Bladder **SAL-SB128T**
- 28 Gal Sprint Bladder - w/ baffle **SAL-SB128B-T**

SALDANA Outlaw Bladders
Stronger and 25% lighter than any on the market.
SAL-SB125T
SAL-SB128T
SAL-SB128B-T



SALDANA Light Weight Top Plate Assembly
The new light weight Saldana top plate assembly features a screw on cap with a built in rollover / vent valve and one -BAN and two -6AN ORB return ports to accommodate for simple plumbing.
SAL-SAC-061

