

## STEERING BOXES



### Gen 2 Power Steering Box

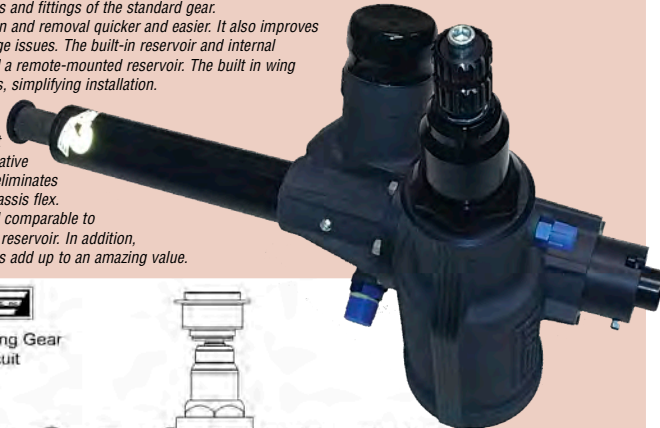
The GEN 2 was track tested for two years before it was released for production. KSE thanks a team of premier drivers including Craig Dollansky, Greg Hodnett, Brent Kaeding, Chad Kemenah, Mark Kinser, Steve Kinser, Jason Meyers, Daryn Pittman, Fred Rahmer, and Donny Schatz.

- Built in reservoir is the live tube of the gear. This cuts turbulence, aeration and provides the most cooling of any tank KSE has tested.
- Wing slider ports are O-ring sealed, utilising high flow #3 O-ring boss to 37 degree JIC #4 fittings.
- Positive feel, new four degree valve and 20% faster lead ball screw transfers quicker front wheel feedback to the hydraulic assist to improve front wheel stability. Inboard mount improves top steering gear mount rigidity, which reduces the rotation of the gear in the chassis.
- The new valve contours the pressure load over a greater range than the previous two-degree valve. This provides a more uniform feel in the steering wheel regardless of the steering load on the front wheels.
- Improved Durability through design and structural analysis were utilized to design a casting that is considerably stronger. The cross shaft tooth form is 40% stronger. Inboard mount eliminates the steering gear as a structural member of the chassis.
- The GEN 2 is comparable to the weight of the KSE Pro Lite gear. It is 25% lighter than the previous 1st generation KSE gear.
- Simplified Plumbing featuring a #10 line from the built-in reservoir to the pump inlet, and a #6 pressure line from the pump to the pressure port is all that is needed. The return to the reservoir is internally ported. The GEN 2 eliminates all external tubes and fittings of the standard gear.
- The inboard mount makes installation and removal quicker and easier. It also improves leg-room and minimizes throttle linkage issues. The built-in reservoir and internal plumbing eliminate hoses, fittings and a remote-mounted reservoir. The built in wing slide ports eliminate fittings and hoses, simplifying installation.
- Tight spots are caused by the steering load being greater than the pressure the pump can deliver. Output torque has been increased by 15% relative to pressure. The inboard mount also eliminates binding of the steering gear due to chassis flex.
- The industry leading GEN 2 is priced comparable to a standard KSE gear with a dead-tube reservoir. In addition, all the GEN 2 improvements and extras add up to an amazing value.



11" Input 16" Output  
KSGEN2L5652

Fitting sold separately

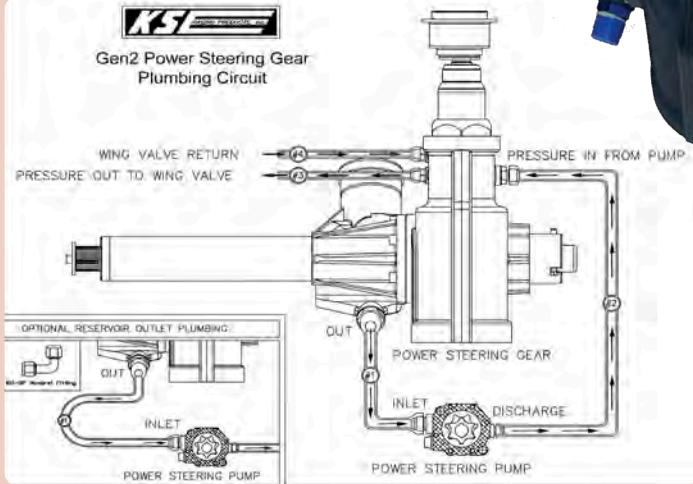


11" Input 16" Output  
Black  
KSGEN2L5652B

#### Replacement Parts

GEN 2 Seal Kit  
KSG0035

GEN 2 Bottom Retaining Plate  
KSG0028



**KSE Pitman Arm Plug Suit**  
Hollow Output Shaft  
KSG1068



**KSE Pitman Arm Washer Suit**  
Solid Output Shaft  
KSG1095

### SPRINT CAR STEERING GEAR

Sweet Mfg. offers Sprint Car Steering Gears that are proven to be the highest quality and most dependable gears in just a few short years of production. Using Valving technology years ahead of the competition these gears are the lightest available. For the best results these gears should be paired with Sweet Mfg's Sprint Car Power Steering Pump.  
SWE306-40110-235



**KSE Splined Input Stub**  
KSG1025



**Light Weight - Black**  
SWE310-40110-235



## STEERING BOX MOUNTS

### SCI Half Box Mount

Black anodised, quick & easy to install.  
RS-KRP396P



### SCI Heavy Duty Top Steering Plate

Deep socket style top steering plate, with much more surface area where the mount seats over the steering gear.  
RS-SCI-1135-C



### SCI Top Steering Plates w/ Shut Off

Black anodised billet top steering plates are available with side shut off mounts to suit Waterman style or Peterson style.

Waterman Style RS-SCI-1135-W  
Peterson Style RS-SCI-1135-MPD



### Sci Top Steering Mount

CNC machined with 6 selection mounting holes, so you can install your power steering box where the driver is most comfortable.  
RS-SCI-1135



### MOOSE BILLET STEERING TOP MOUNT & CLAMP

Long Steer Mount Suit Waterman Shut Off MOO-3206  
Short Steer Mount Suit Waterman Shut Off MOO-3207  
Long Steer Mount Suit Peterson Shut Off MOO-3208  
Short Steer Mount Suit Peterson Shut Off MOO-3209

### GEN 2 Weld on Mounting Tab

HRP-0125T Suits half steering gear



### HRP Top Steering Plates



Single mount hole for use with Waterman style fuel tap.  
HRP-8285

No Fuel Shut off.  
HRP-8298

Designed for use with Peterson or MPD style fuel shut off.  
HRP-8286

### SPP Top Steer Plate to Chassis Bolt

1/4-28 x 1-1/2"  
SPPHH250-28-1500



**SPP Steering Box Clamp Bolt**  
Hex Head 3/8-24 x 1.000"  
SPPHH375-24-1000



**SPP Half Box to Chassis Bolt**  
Hex Head 5/16-24 x .750"  
SPPHH-312-24-750

## POWER STEER FLUID SYSTEM



Pump to Valve RS-KAE-PS09  
BMRS Wing Valve Hose Kit RS-KAE-PS11



### Light Weight High Pressure Line

High pressure lines are designed to fit most applications. 90 degree fittings at each end allow a trouble free fit. Tested to 2600PSI.

17-1/2" L/W High Pressure Line  
22" L/W High Pressure Line  
13-1/2" L/W High Pressure Line

RS-KRP017  
RS-KP022  
RS-KAE-PS02



### Light Weight Supply Line

BMRS low pressure supply line - 10 fittings. Fits directly to GEN 2 steer box and then a 90 into the pump. RS-KP018

### KSE ELIXER Racing Power Steer Fluid

With the frequency and pressure of racing power assist being twice that of stock systems, stock power steering fluid is just not adequate. The Elixer has a higher viscosity index, antifoaming, anti-wear, and antioxidant capabilities that minimize power assist fade, low corner speed assist loss, and decrease heat generation.



1 Quart KSM1086

## KNEE GUARDS

### Sprint Leg Protector

Light weight aluminium formed to surround centre steering unit. Bead rolled for extra strength. KI99500



### Sprint & Midget Leg Protector

Knee guard attach to seat. KI99600



### Direct Mount Knee Gaurds

These lightweight mounts are designed for full boxes and clamp directly to the steering box. RS-KR4000ULD



### Adjustable Knee Gaurds

These mounts are designed for full boxes and are coated in rubber with fully adjustable telescopic tubes. RS-KR3000ULR



### Half Box Carbon Fibre Knee Gaurds

Made from Carbon Fibre for strength and minimal weight addition. Slides straight over the right hand side of the half box housing, and can be hose clamped or cable tied on the opposite side. RS-KRP193

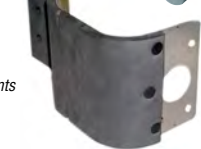


Suits Gen2 steering gear

### Half Box

### Aluminium Knee Gaurds

Padded aluminium knee guard mounts directly to the steering box in the same fashion as the carbon model. RS-KRP487



## STEERING WHEELS & ACCESSORIES



### HRP Steering Wheel

15" HRP flat aluminium steering wheel. 1-1/8" grip. HRP-8028-125-15



### SWEET MFG Steering Wheels

15" Sweet MFG flat aluminium steering wheel. 7/8" grip. RS-70051A

15" Sweet MFG flat aluminium steering wheel, with 1" rubber coated grip. RS-70151C



### XXX Light Weight Steering Wheels

15" light weight aluminium steering wheel. 1-1/8" Grip - Black TXRC-ST-0002BLK



### JOES Ultra Light Steering Wheel

15" black anodised, aluminium steering wheel. 1" grip. 15" Wheel. RS-13535-B

### JOES Get More Grip Steering Wheel Tape

Customize your wheel for maximum comfort and help fight off fatigue. Eight wraps increase the rim diameter by 1/8". RS-JOES13600



### SPP Steering Wheel Bolt

Hex Head 5/16-18 x .625" SPPHH-312-18-625



### KSE Quick Release Steering Hub

Pull-Type Quick Release Hub, suitable for KSE Steering Gears. KSG1027



## STEERING ARMS



### DMI Steering Arms Combo Arm

DMI-SRC2085



### Right Hand Steering Arm

DMI-SRC2100



### SPP Right Front Steer Arm Bolt Drilled

Reduced Hex 1/2-20 x 1.750" SPPRH50020-1750D



### SPP Left Front Steer Arm Bolts

1/2-20 x 2" SPPCS50020-2000A



### SPP

1/2" Press In Steel Steering Stud SPPHLS50020-2000

## RADIUS RODS



### XXX Radius Rods 1 1/8" diameter with 5/8" threads available in polished or anodised black

18.5" Polished TXRC-SC-SU-0100  
18.5" Black TXRC-SC-SU-0100B  
19" Polished TXRC-SC-SU-0103  
19" Black TXRC-SC-SU-0103B  
22.5" Polished TXRC-SC-SU-0108  
22.5" Black TXRC-SC-SU-0108B  
23" Polished TXRC-SC-SU-0111  
23" Black TXRC-SC-SU-0111B  
23.5" Polished TXRC-SC-SU-0110  
23.5" Black TXRC-SC-SU-0110B  
24" Polished TXRC-SC-SU-0112  
24" Black TXRC-SC-SU-0112B  
24.5" Polished TXRC-SC-SU-0113  
24.5" Black TXRC-SC-SU-0113B



SPP Titanium Radius & Panhard Rod Stud Suitable for threaded radius rod chassis pick ups. 1/2-20 x 2.020" SPPONS50020-2100



SPP Titanium Radius & Panhard Rod Stud 1/2-20 x 3.370" SPPONS50020-3370

### SPP Titanium 9/16 Hex Radius Rod -

Chassis Bolt 1/2-20 x 2.625" SPPRH500-20-2625

## PITMAN ARMS



### SCI Pitman Arm

Angled broach light weight pitman arms are quality assured and black anodised. RS-SCI-1129

SPP Torsion Arm & Stop Pinch Bolt 3/8-24 x 1.875" SPPHH37524-1875S



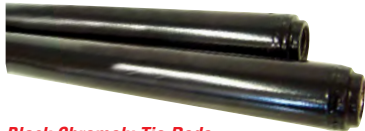
## TIE RODS & DRAG LINKS



### XXX Chromoly Tie Rods

1-1/8" plated 4130 chromoly available in 46"-50" lengths welded 5/8" spud ends

46" Chrome Tie Rod	TXRC-SC-SU-0212
48" Chrome Tie Rod	TXRC-SC-SU-0203
49" Chrome Tie Rod	TXRC-SC-SU-0205
50" Chrome Tie Rod	TXRC-SC-SU-0206



### Black Chromoly Tie Rods

1-1/8" plated 4130 chromoly available in 46"-50" lengths with welded 5/8" spud ends

46" Black Tie Rod	BHR069
48" Black Tie Rod	BHR071
49" Black Tie Rod	BHR072
50" Black Tie Rod	BHR073

### Drag Link Strap

This strap keeps your drag link in place during an accident. Required in most sanctioned events  
HRP-CR011646



## ROD ENDS & JAM NUTS



### FK Rod End

Unsurpassed quality and reliability are attributes in FK Rod Ends genetic make up. 1/2" x 5/8" left hand and right hand thread rod ends are anodised in either black or classic red.

Right Hand Thread - Red	FK-ALRSM8
Left Hand Thread - Red	FK-ALRSM18
Right Hand Thread - Black	FK-ALRSM8B
Left Hand Thread - Black	FK-ALRSM18B

### Jam Nuts

Available in aluminium or steel, and both employ 3/4" hex size.

Right Hand Thread - Aluminium	FK-AJNR10
Left Hand Thread - Aluminium	FK-AJNL10
Right Hand Thread - Black Alloy	PAN010A-3/4BK
Left Hand Thread - Black Alloy	PAN010LA-3/4BK
Right Hand Thread - Steel	FK-SJNR10-1
Left Hand Thread - Steel	FK-SJNL10-1

### HRP Heim Washers

Aluminium 1/2" ID tapered spacer allows more freedom of the heim joint.  
HRP-5350



### FK Chromoly Rod Ends

Right Hand - 5/8" x 1/2"	FK-KMX10-8
Left Hand - 5/8" x 1/2"	FK-KMX10-8

### FK Steel Rod Ends

Right Hand - 5/8" x 1/2"	FK-ECM10-8
Left Hand - 5/8" x 1/2"	FK-ECM10-8



### FK 5/8" Steel Jam Nuts

Available with a 3/4" or 15/16" hex size.

Right Hand Thread - 15/16" Hex	FK-SJNR10
Left Hand Thread - 15/16" Hex	FK-SJNL10
Right Hand Thread - 3/4" Hex	FK-SJNR10-1
Left Hand Thread - 3/4" Hex	FK-SJNL10-1

### Black 5/18-18 Jam Nut Alloy

Right Hand Thread	PAN010A-3/4BK
Left Hand Thread	PAN010LA-3/4BK
Right Hand Flange	PANFA010BK
Left Hand Flange	PANFA010LBK



## OIL FILTERS & ADAPTORS



### K&N Oil Filters

- Drilled safety wire holes for racing
  - 1" hex nut makes removal quick and easy
  - Metal leaf spring provides a positive seal between element and lid
  - Inner core provides extra structural support to prevent filter collapse.
- Small Block Chev - Std Length **KNHP-3002**

K&N Oil filters are available for most makes & models.  
For more information please ring ROCKET.



### ENGINE OIL FILTERS

Aeroflow oil filters have been designed to incorporate all the latest technology to provide great filtration with minimal restriction so that your engine performs at its best with great protection. Aeroflow filters use an improved coil spring design to replace the commonly used "leaf" style spring and incorporate CNC machined thread for a precise fit. An Ultra high-Temp silicone anti-drain back valve in some models helps to prevent dry starts increasing engine life. An extra-thick backing plate and housing offers superior strength and pressure fatigue resistance which provides added protection against pressure surges in racing applications, construction also includes a hi-flow heavy duty base plate that features a fully tucked double seam. Aeroflow oil filters use a Buna-N rubber gasket which is compatible with most racing fuels and lubricants. 24mm - 15/16" hex release nut allows simple and easy removal and incorporates a hole for use with lock wire. Aeroflow oil filters use a premium pleated synthetic blend media provides increased filtration at high flow rates with minimal pressure drop as well as a louvred centre tube that allows more flow area & eliminates media wear during pleat movement.

AF2296-3002

Chevy Long



### Oil Filter Rock Guard

Protects oil filter from being damaged by rocks and debris.  
Part No **RS-101-S**



### BARNES Oil Filter Bracket

Lightweight billet aluminium, simply bolts to the front of the block using existing water pump holes. Eliminates excess plumbing.  
Oil Filter Bracket **RS-BAR8930**  
Oil Filter Bracket O-Ring Kit **RS-BAR8000**

### PETERSON Inline Oil Filters with Bypass

Featuring a built in bypass, the filter has 25% more area than similar filters and is supplied with a 60 micron element. 75 or 100 micron elements available by Special Order.  
2-1/2" Diameter x 7" Long.

#10 AN Bypass Filter	PFS09-0451
#12 AN Bypass Filter	PFS09-0452



For all Oil System Parts available please refer to main ROCKET Catalogue.

## OIL PUMPS & DRY SUMP SYSTEMS

### DRIVEN XP4

#### Racing Engine Oil

A high zinc, petroleum formula racing oil, XP4 offers low cost protection for racers who want to use non-synthetic oil. Excellent protection for dirt and nitrous racers who want to change their oil frequently. Viscosity typical of SAE 15W-50. Sold as 1 quart (946ml)  
JGP00506



### REDLINE RACING OIL

Racing oils provide more wear protection than motor oils for passenger vehicles, however, these products contain fewer detergents and are not suitable for street use

- Reformulated for improved frictional properties
- Special detergents for improved lubricity and less detonation
- Polyol ester base stocks provide more stability and film strength when exposed to excess fuel dilution
- Each of these products has no less than 2200ppm of zinc and phosphorus for antiwear



#### Description

**40WT Race Oil (15W40)**  
40WT Race Oil 1 Quart (946 ml)  
40WT Race Oil 1 Gallon (3.785 Liters)

#### Part No.

**RED10404**  
**RED10405**

**50WT Race Oil (15W50)**  
50WT Race Oil 1 Quart (946 ml)  
50WT Race Oil 1 Gallon (3.785 Liters)  
50WT Race Oil 5 Gallon (18.93 Liters)

**RED10504**  
**RED10505**  
**RED10506**



### CAM DRIVE

Front cam drive for SBC with 1/2" female hex. For dry sump applications.  
KSD-1023



### BARNES 9117 Dry Sump Pump with Oil Filter Adapter

Incorporating all the race winning features of the 9017, with the added performance benefits of the newest, high efficiency rotors and an oil pressure bypass and oil filter adapter machined directly onto the pump's mounting flange. Giving you the easiest possible access to the oil pump, filter and pressure regulator.  
BAR-9117-4CR 4 stage pump rotor scavenging  
BAR-9117-5CR 5 stage pump rotor scavenging

### BARNES 9017 Dry Sump Pump

Efficient, tried and true, Barnes' 9017 Series are smoother running than comparable pumps. Available in 3/8" Hex drive and four stage configuration.  
BAR-9017-4C 4 stage  
BAR-9017-4CR 4 stage rotor scavenging



### PETERSON R4 Dry Sump Pumps

The most advanced oil pump available today. All new alloy 4 lobe rotors, proven in independent testing to provide excellent flow, amazing vacuum and rock steady temperature even at high oil temps.

Call ROCKET For More Details.