



Rear Bumper w/ Post & Braces
TXRC-SC-BN-0006B



Rear Bumpers

Available in different styles and designed to fit all major chassis manufacturers specifications and dimensions.

- Basket Rear Bumper BHR078
- Rear Bumper w/ Post & Braces TXRC-SC-BN-0012

SPP Titanium Nerf Bar Bolts
10/32 X 1-1/2"
SPPHL-10-32-1500



Bumper And Nerf Hardware Kit

Includes all nuts and bolts for front and rear bumpers, and left and right nerfs.
TXRC-SC-BN-3472

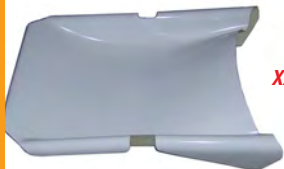


Titanium Nerf Bar Bolt Kit

Super light titanium nerf bolt kit with jet nuts. Includes all nuts and bolts for front bumper, rear bumper, left and right nerfs. Fits all cars. Bolt Material:

- Titanium Bolt Size: 10-32 x 1.50"
- Hex Socket Cap Nuts: 10-32 Jet Nut
- TXRC-SC-BN-3500

HOODS & SCOOPS



XXX Clean Air Scoop
Suited to the XXX "Clean Air" hood.
Gel Coat White
TXRC-SC-BW-0022

Available by special order in Black and Carbon Fibre

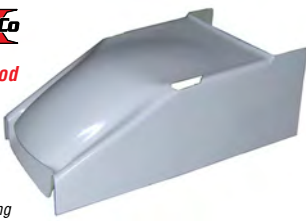


XXX Clean Air Hood

Takes only cool, clean air from the airbox and directs it to the injection. All dirty air is pushed over and around the motor, keeping engine and air filter free of dirt and debris.

- White Gel Coat TXRC-SC-BW-0023

Available by special order in Black and Carbon Fibre



XXX Dual Duct Scoop

- Suits Dual Duct Hood.
- Standard Cage - White Gel Coat TXRC-SC-BW-0050
- Rake Cage - White Gel Coat TXRC-SC-BW-0075
- Tall Chassis - White Gel Coat TXRC-SC-BW-0082

Available by special order in Black and Carbon Fibre



XXX Dual Duct Hood

Two outer inlets let engine breathe cool, clean air evenly into the injectors. Middle and side vents remove warm air from behind the radiator, and sweep it away from the engine bay and injection.

- Standard Cage - White Gel Coat TXRC-SC-BW-0051
- Tall Chassis - White Gel Coat TXRC-SC-BW-0068

Available by special order in Black and Carbon Fibre



XXX Sprint Car Dual Duct Inside The Rail Nose

Fiberglass nose for the "Dual Duct Inside The Rail" hood. Gel-Coated white. Two outer outlets (on the hood) lets engine breathe cool, clean air evenly into the injectors from underneath the nose. Style: Inside the rail dual duct. For use with hood TXRC-SC-BW-6837. Fits: Standard and Wedge Style 87" or 88" Chassis.
TXRC-SC-BW-6119

Available by special order in Black and Carbon Fibre



XXX Inside the Rails Dual Duct Hood

Two outer inlets let engine breathe cool, clean air evenly into the injectors. Middle and side vents remove warm air from behind the radiator, and sweep it away from the engine bay and injection.
Gel Coat White TXRC-SC-BW-6837

XXX Hood Plate

Hood Plates are sold separately for down tube style hoods. Aluminium. Pre drilled. Rivets to the outer side of the hood, and allows top flap to dzus in place.
TXRC-SC-BW-0100

Hood Blanket

Great for keeping the heat in engine and engine bay between races.
RS-KRP015



ARM GUARDS

XXX Left Hand Wedge Full Arm Guard

Full Enclosure Left Arm Guard. 2" Taller and Wedge Chassis. Fiberglass. Gel-Coated white. Completely encloses the left side of the cockpit leaving a small opening for driver entry/exit. Deflects air around the driver and rear of the car. Light and strong. Only fits cars with no left side safety bar.

- Material: Fiberglass
- Color: White
- Finish: Gel-Coated
- Style: For use on cars with no left side safety bar.
- Fits: 2" Taller and Wedge Style Chassis. 87" or 88".
- Weight: 3.8 lbs
- TXRC-SC-BW-6599



XXX Left Hand Arm Guard

Designed to shape around the left side safety cage and enclose the left side of the cockpit, deflecting air around the driver and the rear of the car.

- Standard Chassis - Gel Coat White TXRC-SC-BW-0003
- Tall Chassis - Gel Coat White TXRC-SC-BW-0057

Available by special order in Black and Carbon Fibre



XXX Wedge Right Hand Arm Guard

Moulded wedge shape for extra elbow room. Designed to be used with new style "Dual Duct" hood, and will work with most hoods on the market.

- Tall Chassis - Gel Coat White TXRC-SC-BW-0061



XXX Bubble Right Hand Arm Guard

Moulded with bubble shape for extra elbow clearance.
Gel Coat White TXRC-SC-BW-0025

Available by special order in Black and Carbon Fibre

FLOOR PANS



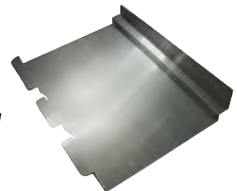
XXX Aluminium Wrap Around Floor Pan

Will suit XXX/Maxim style raised rail cars that use wrap around style floors. Measurement is obtained from centres of tube below motor plate, to rear K - brace.

- 15-1/2" Floor Pan TXRC-SC-BW-0013
- 17-1/2" Floor Pan TXRC-SC-BW-0007

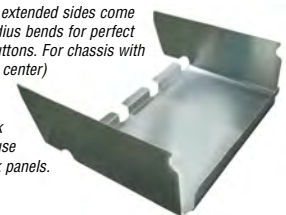
XXX Aluminium Drop In Floor Pan

Radius bends for perfect drop in fit. Suits 15 1/2" centres from bar below motor plate to rear K - brace.
TXRC-SC-BW-0015



XXX Extended Side Floor

Aluminium floor Pan with extended sides come up above the muffler. Radius bends for perfect fit. Not drilled for dzus buttons. For chassis with 15 1/2" spread (center to center) from bar below motor plate to rear K-Brace. Super strong 0.080" thick to protect your feet. For use with fiberglass upper kick panels.
TXRC-SC-BW-0016



HRP Aluminium Drop In Floor Pan

Designed for standard rail cars.
HRP-8317



SPP Floor Pan to Chassis 1/4-28 x 1/2" SPPHH-250-28-500

SPP Titanium Hex Head Floor Pan Bolt 10-32 x .625" SPPHH-10-32-625

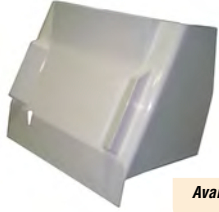


DASH PANELS



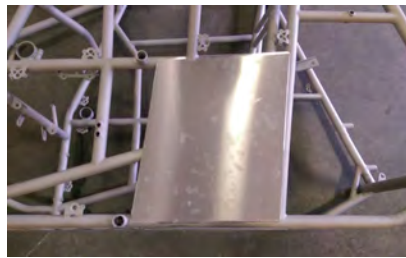
XXX Aluminium Dash

Aluminium dash notched for throttle linkage and motor plate brackets. 90° Top surface for Hood Attachment. Suit tall chassis. TXRC-SC-BW-0008



XXX Inside the Rails Dash
Must be used in conjunction with the Triple X inside the rail hood. Gel Coat White TXRC-SC-BW-6447

Available by special order in Black and Carbon Fibre



Rear Enclosure Panel

Sprint Car Left Rear Enclosure Panel. Used to further enclose the rear of the cockpit keeping mud and debris off of rear end and components. Fits behind kick panels and compatible with fiberglass or aluminium kick panels on 2015 and newer model Triple X Sprint Cars with the straight rear cage upright.

Left - TXRC-SC-BW-8330

Right - TXRC-SC-BW-8331



Left Side Engine Enclosure

Engine packages are only getting more expensive, which is why it's paramount to protect the most expensive part of your car. The Triple X Engine Enclosure panels do just that - keeping heavy debris and clay away from your engine, ensuring that plug wires will always remain on and that your engine will look as good as it runs for years to come. Panels are two piece, split at the radius rod support.

Pair with right side panel (SC-BW-9832)

TXRC-SC-BW-9830



Right Side Engine Enclosure

Engine packages are only getting more expensive, which is why it's paramount to protect the most expensive part of your car. The Triple X Engine Enclosure panels do just that - keeping heavy debris and clay away from your engine, ensuring that plug wires will always remain on and that your engine will look as good as it runs for years to come. Panels are two piece, split at the radius rod support.

Pair with left side panel (SC-BW-9830).

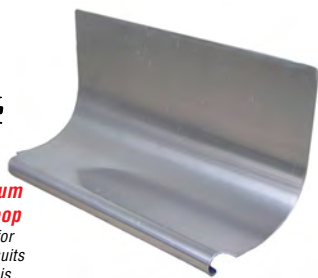
TXRC-SC-BW-9832

RADIATOR SCOOPS & SUPPORTS



XXX Aluminium Radiator Scoop

Must be drilled for dzus buttons, suits raised rail chassis. TXRC-SC-CH-0003



HRP Aluminium Radiator Scoop

Designed to be used with standard rail chassis. HRP-8327A

HRP Steel Radiator Scoop

Black powdercoated and designed to be used with standard rail chassis. HRP-8327-MS



XXX Aluminium Radiator Support

Pre drilled dzues holes and cut out for radiator hose. Made to dzus at an angle to clear certain style hoods.

TXRC-SC-CH-0004



HRP Aluminium Airbox Front Panel

Protects bottom half of radiator, and serves as a mount for the radiator rock screen.

HRP-8301

HRP Sprint Car Radiator Support

Pre drilled dzues holes and cut out for radiator hose. Mounts in chassis at 90°.

2.125" Wide HRP-8300

2.625" Wide HRP-8300-4



Flat Radiator Deflector

Aluminium Flat Front Air Box. Built with the 1" raised rail angle. Dzues holes not drilled. TXRC-SC-CH-6345

PANEL ACCESSORIES

See more panel fasteners on page 386



HRP Aluminium Hood Saver
HRP-8010V



XXX Stainless L/W Body Saver
TXRC-SC-BW-0026



Dzus Spring
.375 Spring
PAN6375



Light Weight Steel Button
.500" Button
HRP-0329



Light Weight Steel Plates
PAN8220



Aluminium Dzuz Buttons
.500" Button PAN6500
.500" Black Button PAN6500BK
.550" Button PAN6550

Large Diameter Head Dzuz Buttons

Larger diameter gives greater surface coverage of the panel, giving it longer life. Also helps when the hole is opened out, as it will still hold the panel tight. Supplied individually, available in raw or black anodised finish.

Black Finish

PANB1GABK6500



7/16 Self Eject Button Black

7/16 Self Eject Button .500 grip PAN6500BK
7/16 Self Eject Button .550 grip PANE6550BK



Quick Fastener Wrench

This zinc plated spring steel tool reduces damage to fasteners and body panels, with three different sized radii to match the slots in various 1/4-turn fasteners. Includes non-slip, hand grip. MO71600

LOWER PANELS



XXX Aluminium Kick Panel

Single piece left hand and 2 piece vertical split right hand side design. Notched for nerf bar spuds, standard and long radius rod pick ups and gear shifter. TXRC-SC-BW-0005 TXRC-SC-BW-0006



XXX "Horizontal Split Design" Upper Kick Panels

Gel-coated fibreglass, notched for nerf bar spuds, splits horizontally above muffler. Convex "Bullet" design goes over radius rods.

R/H Upper White
R/H Upper Black
L/H Upper White
L/H Upper Black

TXRC-SC-BW-0031
TXRC-SC-BW-0031B
TXRC-SC-BW-0033
TXRC-SC-BW-0033B



XXX "Horizontal Split Design" Lower Kick Panel

Aluminium lower kick panel to be paired with upper horizontal split kick panel. Radiused bends for perfect fitment, not drilled for dzus buttons.

R/H Lower Panel TXRC-SC-BW-0030
L/H Lower Panel TXRC-SC-BW-0032

MOROSO**Easy Grip Quick Fastener Wrench**

Featuring an easy grip handle and redesigned zinc coated steel shank, the blade is contoured to fit inside the 1/4-turn fastener without stripping the slot.

MO71606

Quick**Fastener Washers**

Quick fastener washers protect your car's finish from scratches. A must for the conscientious car owner.

Pack of 25.
MO71610**Panel Spring Adjuster Tool**

The hassle of adjusting panel fastener springs is over. No more adjusting with a screwdriver or gripping with a pair of pliers. PANELfast's Panel Spring Adjuster is the right tool for the job. The panel spring adjuster is quick and easy to use, light weight and durable. It pulls the spring evenly like a panel button fastener would so you do not create any kinks or breaks in the spring. Has the ability of pushing or pulling the spring with an even amount of pressure and tension applied.

PAN7602

**Triple X Race Co****XXX Front End Hardware Kit**

Kit includes thrust bearings & washers, all grade 8 spindle bolts, rotor bolts steering arm bolts & grease zerks.

TXRC-SC-FE-0002



SPP Radius Rod to Front Axle Bolt
1/2-20 x 1-1/4"
SPPHHS0020-1250A



SPP Titanium 9/16 Hex Radius Rod - Axle Bolt
1/2-20 x 1.250"
SPPRH500-20-1250

**DMI TETRIS Front Hubs**

The newest and lightest hub DMI offer. These are the coolest hubs available!

DMI-SRC1964

HUB SETS**DMI Black Widow Front Hubs**

Increased material in the web of the hub and substantial perimeter weight savings make it the strongest hub available. Suit Weld and Sander wheels.

Black Widow Hub Set (Black)
Black Widow Right Front Hub (Black)
Black Widow Left Front Hub (Black)

DMI-SRC1971
DMI-SRC1968X
DMI-SRC1969X

DMI Hub Replacement Parts

Angular Contact Bearings
Oil Seal
Bearing Kit
Threaded Dust Cap
Wheel Stud Kit
Lug Nut

DMI-SRC1984X
DMI-SRC1988
DMI-SRC1990
DMI-SRC1995A
DMI-SRC1999
DMI-SRC1999A

**Winters Complete Hub Set Gold**

RS-WIN-3980 SET

**Winters Complete Hub Set Black**

RS-WIN-3980B SET

SPP Titanium Wheel Stud
Available in either countersunk or hex head to suit all brands of hubs. Sold Individually.

FRONT AXLES**XXX 50" x 2-1/4" Front Axle**

Jig fabricated chromoly axles, suitable for Triple X or Maxim style cars. Features threaded panhard bar stud and threaded shock mounts.

Technical Specs

- Material: 4130 Chromoly
- Wall Thickness: .120"
- Right Front King Pin: 12"/10"
- Left Front King Pin: 10"/9"
- Offset: 1" Left
- Weight: 14.5 lb

Chrome – TXRC-SC-FA-0002
Black – TXRC-SC-FA-0008

**XXX 50" x 2-1/2" Light Weight Front Axle**

Jig fabricated for exacting quality and fit. A great looking and finished piece. Features threaded panhard bar stud and threaded shock mounts.

Technical Specs

- Material: 4130 Chromoly
- Wall Thickness: .095"
- Right Front Kin Pin: 12"/10"
- Left Front King Pin: 10"/9"
- Offset: 1" Left
- Weight: 13.2 lb

Chrome – TXRC-SC-FA-0004
Black – TXRC-SC-FA-0010

**XXX Wingless Coil Over 52" x 2 1/4" Front Axle**

Jig fabricated for exacting quality and fit. A great looking and finished piece. Features threaded panhard bar stud and threaded shock mounts.

Technical Specs

- Material: 4130 Chromoly • Wall Thickness: .120"
- Right Front King Pin: 12"/10" • Left Front King Pin: 10"/9"
- Offset: 3" Right • Width: 52" • Weight: 16.5 lbs

Chrome TXRC-SC-FA-0200

**HRP 50" x 2-1/2"****Light Weight Front Axle**

Complete with a threaded panhard bar stud, aero tube uprights and threaded shock studs.

Technical Specs

- Material: 4130 Chromoly • Wall Thickness: .095"
- Left Front Caster: 10° • Right Front Caster: 12°

HRP-8041

**DMI Gold Widow Front Hubs**

Increased strength in the web of the hub where you need it most matched with substantial weight savings around the perimeter make it not only the strongest, but also the lightest hub available.

DMI-SRC1971G

**WELD Racing Magnum Front Hubs**

All hubs are forged aluminium and CNC machined for an outstanding finish. Hubs are supplied complete. Available with 3 – lug rotor provision for left front, or without. Offered in black or traditional gold anodising.

Left Front Hub Gold
Right Front Hub Gold
Left Front Hub Black
Right Front Hub Black

WEC8088-LT
WEC8088-RT
WEC8088B-LT
WEC8088B-RT

WELD Hub Replacement Parts

Stud & Lug Nut Kit
Bearing Kit
Hub Oil Seal
Billet Dust Cap
Gold Billet Dust Cap
Black Billet Dust Cap

WEC0223
WEC0229-B
WEC0321
WEC0323
WEC0323
WEC0323B



Countersunk (WELD)
SPPPCS375-16-1250



Hex Head (DMI / WINTERS/ SANDER)
SPPBH375-16-1250



Titanium Lug Nut 3/8-16 Hex
SPPFLTN-375-16

**Billet Aluminium Dust Cap Oil Plug**

Replacement billet dust cap and O-ring for a Midget/Sprint

3-Spoke Ultra Hub or Magnum Hub.

WEC0323-OIL Gold with oiling hole
WEC0323B-OIL Black with oiling hole
WEC0323 Gold standard
WEC0323B Black standard

SCI Oil Fill Dust Cap

Save yourself some time on your sprint car and midget race program with this Oil Fill Dust Cap. The oil filled dust covers are designed for performance and time savings on maintenance.

This kit comes with everything you need to convert your standard Weld and MPD front hubs from grease to oil. The specially designed dust cover works with an O-ring to create a great sealing surface in the hub to prevent oil leaking out of the front side of the hub.

RS-SCI-1200SET

Sprint Hub Bearing Spacer

These adjustable bearing spacers for Sprint and Midget race car front hubs will increase your wheel spin by over 1200%. They can be used with standard tapered roller bearings or angular contact ball bearings.

These spacers will increase how freely your car rolls, putting more horsepower to the track and decreasing corner drag.

Patented Adjustable Bearing Spacers increase wheel spin by over 1200%. Installing MPD bearing spacers will increase how freely your car rolls, putting more horsepower to the track and decreasing corner drag. Spacers can be used with standard tapered roller bearings, angular contact ball bearings. Once adjusted for your hub, you simply lock down your spindle nut for a perfect set of freewheeling bearings

MPD-013607

