

REAR END



XXX 600/Micro Sprint Complete Rear End

Complete 52" x 1-7/8" rear axle assembly.

Complete Rear Axle Includes:

- 52" Rear Axle Tube
- Splined Rear Axle Nuts • Sprocket/Rotor Hub • 1/4"-28 mounts
- Ultralight Rear Brake Rotor • Sprocket/Rotor Hub
- 5/16"-20 mounts • Complete Rear Brake Carrier • Bird Cages
- 2" Tapered Axle Spacer • 1" Tapered Axle Spacer
- 1/4" Axle Spacer • 1/2" Axle Spacers • 3 x 3/4" Axle Spacer
- 2 x 1" Axle Spacers • 2" Axle Spacer • 3-1/4" Axle Spacer
- 4-5/8" Axle Spacer • 7-3/4" Rear Axle Spacer

TXRC-600-SU9000



XXX 600/Micro Sprint Rear Axle Tube

Aluminium 52" axle tube only. 1-7/8" Diameter, with 1-3/4" splines and threads. 14-1/8" centre spacing and 0.45" Wall Thickness.

TXRC-600-SU0101

XXX 600/Micro Sprint Bearing Retainer Snap Ring

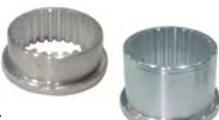
Suited to the brake carrier bearing and bird cage bearings.

TXRC-600-SU-0201



XXX 600/Micro Sprint Splined Bearing Spacers

To be used with 1-7/8" axles, and come in two sizes for single or double bearing bird cages.



1-1/4" Double Bearing Birdcage Splined Spacer TXRC-600-SU0017
Single Bearing Birdcage Splined Spacer 5/8" TXRC-600-SU0018

XXX 600/Micro Sprint Rear Axle Nuts

Anodised aluminium axle nuts suit the XXX rear axle.

Right Hand TXRC-600-SU0102
Left Hand TXRC-600-SU0103



XXX 600 Axle Spacer Kit Black

600 Mini Sprint Black Rear Axle Spacer kit. For use with 1 7/8" Axles. 11 Spacers total in the set; 6 Standard and 5 Tapered. All the spacers you should need to get the offsets you want. See kit details below for a list of each spacer in the kit.

- Standard
- (2) 1/4" Standard Spacer
 - (2) 1/2" Standard Spacer
 - 3/4" Standard Spacer
 - 1" Standard Spacer
- Tapered
- (2) 3/4" Tapered Spacer
 - (2) 1" Tapered Spacer
 - 2" Tapered Spacer
- TXRC-600-SU0453B**

XXX 600/Micro Sprint Bird Cages

CNC machined bearing carriers feature double heavy duty double roller bearings, and include snap rings. XXX bird cages suit 1-7/8" axles and have a measured distance of 6" between the radius rod and torsion arm pick ups.

Left Side Bird Cage TXRC-600-SU-0192
Right Side Bird Cage TXRC-600-SU-0193



XXX 600/Micro Sprint Rear Torsion Arms

CNC machined polished aluminium.

Left Rear Torsion Arm TXRC-600-SU0173
Right Rear Torsion Arm TXRC-600-SU0174

XXX 600/Micro Sprint Jacobs Ladder

Chrome plated, 10-1/4" Jacobs ladder includes aluminium straps. Jig fabricated out of 1/2" x 0.065" wall chrome moly tubing

TXRC-600-SU0002



BRAKES

XXX 600/Micro Sprint Rear Brake Rod

Heavy duty 4130 chrome moly rod, 20" long with 7/16".

TXRC-600-SU0025

XXX 600 Micro Sprint Rear Brake Carrier

600 Micro Sprint Rear Brake Carrier. Black. The aluminium single row bearing design saves weight over bulkier, more awkward designs. Comes complete with snap ring and bolts, so you don't have to spend time searching for hardware to assemble your brake system. 3.25" Spread Caliper Mounts Directly to Carrier.

TXRC-600-BK0002B



XXX 600/Micro Inboard Brake Rotor

Steel rotor is 9.5" O.D and 3/16" thick. It utilises 6 on 5-1/4" bolt pattern with 1/4" bolts.

TXRC-600-BK0001



XXX 600/Micro Sprint Drive Sprocket/Brake Rotor Hubs

CNC Machined aluminium hubs come in two styles to suit different mounting bolt centres.

1/4"-28 Threaded Bolt Holes TXRC-600-SU0180
5/16"-20 Threaded Bolt Holes TXRC-600-SU0181



XXX 600 Left Front Brake Rotor

Keizer 600 Micro Sprint Front Brake Rotor. Bolts directly to the Keizer left front hub with use of the Triple X left front brake bracket. A great tool for helping turn your car at corner entry, a quick stab or roll on to the brake entering the corner at high speed will begin your car's rotation, allowing you to maintain your high RPMs and blow by your fellow drivers at corner exit. Durable steel will last you many races before you have to replace it.

TXRC-600-BK0003



XXX 600 Left Front Brake Caliper Mount

XXX 600 Micro Sprint Left Front Brake Bracket. This steel bracket attaches the MCP front caliper and Keizer front rotor to the Triple X spindle. Mounting bolts sold separately.

TXRC-600-BK0004



MCP Left Front Brake

Caliper TXRC-MCP-1375



SUSPENSION

PRO Threaded Small Body Shocks

Pro have been the worlds innovation and shock technology leaders since 1983. A mix of on track testing, technical experience and engineering allow Pro Shocks to stand heads above the rest in performance and quality.

6" Body 6" Stroke TXRC-ASB62.05B **7" Body 7" Stroke TXRC-ASB730B**
TXRC-ASB620B **TXRC-ASB731B**
TXRC-ASB624B **TXRC-ASB734B**
TXRC-ASB625B **TXRC-ASB740B**
TXRC-ASB626B
TXRC-ASB630B
TXRC-ASB640B



Custom Valving and Stroke's available by Special Order



PRO Rebound Adjustable Smooth Body Shocks

Pro adjustable shocks are so user friendly that even the entry level racer can use it effectively. Totally adjustable on the rebound, without affecting the compression.

1/2" Body 6" Stroke TXRC-ASB620-5B **7" Body 7" Stroke TXRC-ASB723-7B**
TXRC-ASB623-7B **TXRC-ASB733-7B**
TXRC-ASB740-5B **TXRC-ASB743-7B**



Custom Valving and Stroke's available by Special Order

XXX 600/Micro Sprint Plastic Torsion Bar Bush

Made from heavy duty nylon material, suitable for 7/8" torsion bars.

TXRC-600-CH3001



XXX 600/Micro Sprint Aluminium Torsion Stop

Aluminium torsion stops come complete with pinch bolt, adjuster bolt and jam nut.

TXRC-600-SU0170

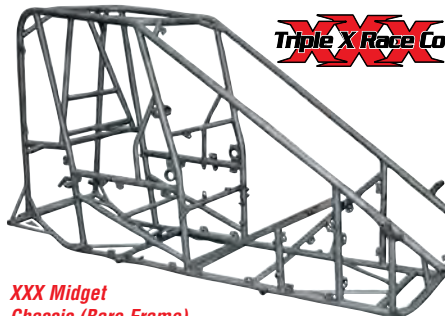


XXX 600/Micro Sprint Aluminium Radius Rod's

XXX 600/Micro Sprint use a 3/4" panhard bar and radius rods on the front, while the rear radius rods are 7/16".

Panhard/Front Radius Rod 15-1/2" TXRC-600-SU0019
Left Rear Radius Rod 20" TXRC-600-SU0023
Right Rear Radius Rod 21" TXRC-600-SU0024

MIDGET CHASSIS & ACCESSORIES



XXX Midget Chassis (Bare Frame)

One of the highest quality chassis on the market, race proven by some of the best racers in the business. As with previous products, XXX has succeeded at bringing the midget chassis, and it's componentry to the racer cost effectively. From the drawing board to construction, the XXX midget has been designed with the most common dimensions available on the market, making it as compatible as possible with other brands.

Technical Specifications:

- Material: 100% Chrome moly Tubing.
- Weight: 115lbs.
- Chassis Geometry: Same common dimensions as most chassis on todays market, pick up points, motor plate location, torsion tube location, etc.
- Wheel Base/Motor Setback: 71" Wheel Base / 33" Motor Setback
- Suspension: Coil Over Front Torsion Bar Rear.
- Torsion Bar Length: 28"
- Torsion Bar Diameter: 1"
- Torsion Bar Split: 1-3/4"

Features:

- 53" Tall Chassis
- 100% Chrome moly Chassis
- Threaded Shock and Radius Rod Pick Ups

TXRC-MID-CH1000



HRP Midget Rock Screen

Lightweight 4130 chrome moly, powder coated black, 8-1/2" x 23".

HRP-8069M



KIRKEY Midget Leg Protector

Light weight aluminium formed to surround centre steering uint. Bead rolled for extra strength.

K199502

BODY PANELS

XXX Midget Hood Nose

Gel coated white fibreglass nose panel.
TXRC-MID-BW0035



XXX Midget Hood

Gel-coated white fibreglass, Dual scoop design hood takes cool air into the under bonnet area. Hood is also designed to let hot air escape from behind radiator and from rear of engine.
TXRC-MID-BW0036



XXX Midget Sail Panels

Left Side Sail Panel TXRC-MID-BW-0049
Right Side Sail Panel TXRC-MID-BW-0054



XXX Midget Left Hand Arm Guard

For use with left side safety bar, fibreglass construction encloses the left side of the cockpit and deflects air around the driver. Finished in gel-coat white
TXRC-MID-BW0037



XXX Midget Right Hand Arm Guard

Designed with wedge style bubble for extra driver arm room. Fibreglass gel-coated white panel is suitable for right side straight safety bar.
TXRC-MID-BW0038



XXX Midget Left Hand Front Panel

Gel-coated white fibreglass. Pre fit for nerf bars and radius rods.
TXRC-MID-BW0042



XXX Midget Dash Panel

Aluminium dash panel is not pre drilled for dzus buttons.
TXRC-MID-BW0040



XXX Midget Floor Pan

Aluminium floor pan has radiused bends for a perfect fit.
TXRC-MID-BW0039



XXX Midget Left Hand Kick Panel

Notched for nerf bars, long radius rod and standard radius rod mounts.
TXRC-MID-BW0041



XXX Midget 4pc Right Hand Kick Panel Kit

Encloses left hand side of the car. Pre notched for standard and long radius rods, nerf bars and front radius rods. All panels are aluminium.
TXRC-MID-BW0043

XXX Midget Radiused Airbox

Pre fit for chassis, directs air into radiator.
TXRC-MID-BW0044



XXX Midget Radiator Tray

Aluminium tray with radiused bends for perfect fit. Not pre drilled for dzus buttons.
TXRC-MID-BW0045



XXX Midget Hood Plate

Midget hood plate for down tube style hoods. Pre drilled for riveting onto hood.
TXRC-MID-BW0046



XXX Midget Sun Visors

Available in fibreglass gel-coated white or aluminium.



Fibreglass Sun Visor • TXRC-MID-BW-0047

Aluminium Sun Visor • TXRC-MID-BW-0048

DRIVELINE



Rear Midget Torsion Arms

These rear arms fit all the popular cars with 1-3/4" split. Machined with full radius edges comes with hardware and a black finish.
Left RS-SCI-1140-M
Right RS-SCI-1141-M

Billet Aluminium Firewall Housing

This is the latest product from the SCI product line. Machined from billet aluminium, making it light weight and strong as well adding more protection from broken u-joints.
RS-SCI-1178



SCI Heavy Duty 3" Midget Torque Tube

This SCI aluminium heavy duty torque tube with collar has an overall length of 27-1/2" and 3" diameter on the tube. This tube has become popular because of its strength. The new torque tube and torque ball assemblies are proven to be the best on the market.
RS-SCI-1128M

ENGINE

Medium Sprintcar

Airbox Universal

K&N has constructed the filter assembly (100-8570) from carbon fiber to fit from 2" to 2 5/8" Hillborn, Kinsler and Engler stacks. This allows racers to eliminate clamping a filter on to each individual ram tube. Once the base is in place, simply slip the main filter assembly over the stacks.

Medium Sprint box w/

Filter Top NO Holes in Base, Fits Four Injectors. Pre-Cleaner Suit
KN100-8570
KN100-8570PK



PETERSON Inline Temperature Port Assembly

Peterson's inline temperature sender fitting assembly has a standard 5/8-18 threaded port for a mechanical temperature probe. #10AN x #10AN Hose.
PFS09-1940



PETERSON Vacuum Regulator

Proven to regulate crankcase vacuum and hold a steady level through extensive testing. Vacuum can be regulated from as high as 29.7 in/hg down to 2 in/hg. Machined from Billet aluminium and features the same great quality as all of Peterson's products.
Vacuum Regulator w/-12AN Bung
PFS08-0455



SCRUB BAG

Midget Airbox

Water proof bag with draw string to keep water and dirt out of the K&N midget airbox while washing or transporting.
RS-OUT30116201



MSD Programmable Midget Ignition

A complete electronic distributorless system consisting of a powerful capacitive discharge Ignition Control, a four tower high output coil pack and uses two non-magnetic pickups with a trigger wheel as a crank trigger source. This takes all of the mechanical variables out of the picture to produce exact ignition timing. Adding to the accuracy and high output of this ignition system, is the advantage of being able to precisely program the timing throughout the engine's entire rpm range. By using the optional Hand Held Programmer, PN 7550, or MSD's Pro-Data+ software package on a Windows based PC, racers can program two different timing curves down to .1° per 100 rpm increments. Other features include a rev limiter, a start retard and a circuit that monitors battery supply voltage. It produces full power capacitive discharge sparks at any rpm so you can be assured of complete combustion. To control this power and the programs, a 15 MHz microcontroller analyzes the various inputs and is capable of extremely quick compensations to maintain exact timing and rpm. Supplied with the Ignition Control, two Non-Magnetic Pickups, Trigger Magnet, On/Off Switch and Software.

MSD Programmable Midget Ignition Midget Coil Pack

MSD6214
MSD8240

Coil Pack, PN 8240, must be purchased separately & Crank Trigger Wheel must be fabricated for each application.

MSD Midget Lead Set 8.5mm Universal

The only wires recommended for use with any MSD ignition system. Featuring a copper alloy conductor that is tightly wrapped around a special center core to create a highly effective EMI choke. The wire has less than 50 ohms resistance per foot, but does not interfere with any other electronics. Each wire is numbered for its desired cylinder and all terminals and boots are factory installed.
MSD31689

