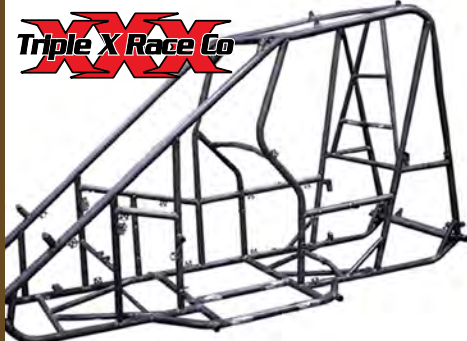


MICRO CHASSIS & ACCESSORIES

Triple X Race Co



XXX 600/Micro Sprint Chassis

Designed with the most common dimensions available on the market, making components compatible with most other brands. In it's first attempt, the XXX 600 chassis claimed the Tulsa Shootout. As with all XXX products, along with speed and versatility the XXX 600 chassis is designed and manufactured with quality and safety in mind.

Technical Specifications:

- 100% Chromoly Tubing. • Weight: 115lbs.
- Chassis Geometry: Same dimensions as most chassis on today's market, pick up points, motor plate location, torsion tube location, etc. • Wheel Base: 61"
- Suspension: Torsion Front and Rear.
- Torsion Bar Length: 26" • Torsion Bar Diameter: 7/8"
- Torsion Bar Split: 1-1/2"

Features:

- 1-3/8" x 0.083" tubing used for main cage and uprights, exceeding every sanctioning body's specification requirements.
- 90° Shock towers to save shock absorbers in accidents.
- Threaded shock and radius rod mounts.
- Adjustable pedal system.
- Stand up radiator for excellent engine cooling.

TXRC-600-CH1000



XXX 600 Mini Bare Sprint Chassis

You've asked for it, and once again, Triple X has delivered. From the company that has brought you value across the board in Sprint Car, Midgets and 600 Mini Sprints, we're proud to debut our brand new 2014 600 Watts Link/Panhard Fusion Chassis!

Not just a race proven winner, the XXX 600 chassis is already the #1 chassis in all of Australia for 2014. On March 15th, Australia had a new national champion in their Formula 500 (600 Mini Sprint) division, and that man was Brock Hallett, driver of the Cates Motorsport A1 XXX 600.

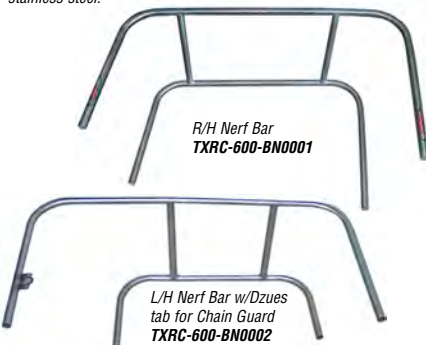
The 2014 model 600 chassis comes with mounts for both a panhard style rear axle assembly and a watts link style rear axle assembly. The panhard style assembly has been track tested and approved in the most grueling conditions, and offers cockpit adjustability of your roll center during the race. Drivers and teams looking to upgrade from previous year model cars with watts link rear axle assemblies will only need to add our brand new zero deflection right rear torsion arm to their existing components and add the panhard conversion package if they want to have the option to switch.

Chassis and components for the 2014 600 Watts Link/Panhard Fusion Chassis are in stock and ready for immediate shipping! The call for a chassis that incorporates mounts for both Panhard Rear Ends and Watts Link Rear Ends has been loud in both North America and Australia, and we're proud to be able to introduce the car that answers that call.

TXRC-600-CH2000

XXX 600/Micro Sprint Nerf Bars

CNC bent and jig fabricated for exact fit from quality polished stainless steel.



Rear Nerf Bar - No Basket
TXRC-600-BN0005



Front Nerf Bar
TXRC-600-BN0010



XXX 600/Micro Sprint Pedals
Throttle Pedal TXRC-600-CH2019
Brake Pedal TXRC-600-CH2020



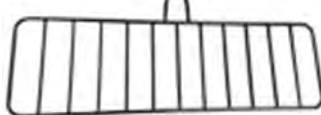
XXX 600/Micro Sprint XPRS Pedal System

Innovative design creates opportunity for a full 14" of movement backward and forward. Light 4130 black powdercoated pedals, lightened aluminium rails for mounting. Multiple bosses for use with Wilwood or MCP (go kart style) master cylinder configurations. All mounting hardware is included.

XPRS Pedal Assembly TXRC-600-CH2045



Dzues Spring TXRC-600-CH0079
Light Weight Dzues Plate TXRC-600-CH3002



XXX Midget/600 Driver Rock Screen

XXX Midget and 600 Rock Screen (fits both). Black powder coated. Mandrel bent steel screen easily attaches to the roll cage uprights of most 600 chassis and adds protection for the driver from debris entering the cockpit. Slots are 2" apart. A must for driver safety, and huge savings over other brands. Protect your driver's vision and add this to your shopping cart right now!

TXRC-600-CH-1336

BODY PANELS

XXX 600/Micro Aluminium Panel Kit

Includes all aluminium panels to suit Triple X 600 Chassis.

TXRC-600-ALKIT



Triple X Race Co

XXX 600/Micro Sprint "Dual Duct" Hood

The dual ducts allow air to pass through to the engine on the left hand side, and to the driver or radiator on the right hand side. The outlet placed on the right hand side also allows engine heat to escape the cockpit.

White Gel Coat TXRC-600-BW0001

XXX 600/Micro Sprint Left Side Arm Guard

Fibreglass construction, contours to left side safety bar.

White Gel Coat TXRC-600-BW0002

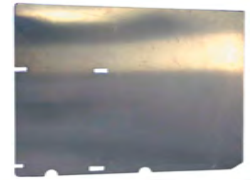
XXX 600/Micro Sprint Right Side Arm Guard

Fibreglass construction, contours to right side safety bar.

White Gel Coat TXRC-600-BW0003

XXX 600/Micro Sprint Floor Pan

TXRC-600-BW0004



XXX 600/Micro Sprint Rear Floor Pan

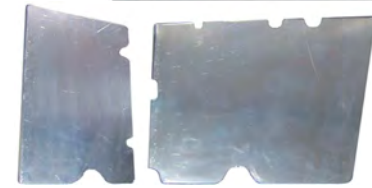
TXRC-600-BW0005



XXX 600/Micro Sprint Left Hand Side Panel

Two piece aluminium panel kit.

TXRC-600-BW0006



XXX 600/Micro Sprint Right Hand Side Panel

Three piece aluminium panel kit.

TXRC-600-BW0007

XXX 600/Micro Sprint Dash

TXRC-600-BW0008



XXX 600/Micro Sprint Chain Guard

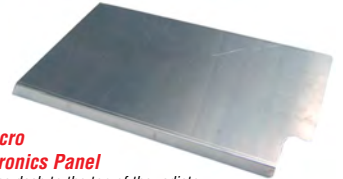
TXRC-600-BW0009



XXX 600/Micro Sprint Motor Shroud

Aluminium shroud to protect drivers in the case of massive engine failure.

TXRC-600-BW0010



XXX 600/Micro Sprint Electronics Panel

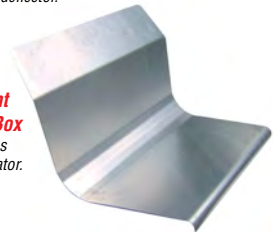
Mounts from the dash to the top of the radiator, also acts as a driver fume deflector.

TXRC-600-BW0011

XXX 600/Micro Sprint Radiused Front Air Box

This aluminium panel helps direct air through the radiator.

TXRC-600-BW0012



FRONT END



XXX 600/Micro Sprint Torsion Bar Front Axle

4130 1-1/2" x 0.120 wall thickness chromoly construction. Jig fabricated for exacting quality and fit. Chrome plated or black powdercoat.

- Axle Width: 40" (king pin boss centre's)
- Boss Length: 1-3/4" - Reamed & Honed for perfect fit from factory
- King Pin Inclination: 10° Right Front, 10° Left Front
- Panhard Mount: Threaded 3/8 Stud
- Shock Mounts: Female Threaded
- Torsion Bar Roller: Bracket on right side only, roller not included.
- Weight: 7.6lbs

Chrome TXRC-600-FA0002



XXX 600/Micro Sprint Coil Over Front Axle

4130 1-1/2" x 0.120 wall thickness chromoly construction. Jig fabricated for exacting quality and fit. Chrome plated or black powdercoat.

- Axle Width: 40" (king pin boss centre's)
- Boss Length: 1-3/4" - Reamed & honed for perfect fit from factory
- King Pin Inclination: 10° Right Front, 10° Left Front
- Panhard Mount: Threaded 3/8 Stud
- Shock Mounts: Female Threaded
- Torsion Bar Roller: Bracket on right side only, roller not included.
- Weight: 7.6lbs

Chrome TXRC-600-FA0003

XXX 600/Micro Sprint Kin Pin

3-5/8" long by 5/8" diameter steel king pin includes clips, and is recessed on one side for a grub screw.

TXRC-600-FA0007



DMI 600/Micro Sprint Steel King Pin

DMI king pins are made from high grade chromoly for strength and to last longer against wearing.

DMI-LRC2039



XXX 600/Micro Sprint Steering Arms

CNC machined from billet aluminium.

Front steer Arm TXRC-600-FA0010



XXX 600/Micro Front Torsion Arms

CNC machined polished aluminium.

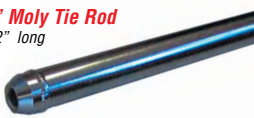
Left Front Arm (Long) TXRC-600-SU0171
Right Front Arm (Short) TXRC-600-SU0172



XXX 600/Micro Sprint 36-1/2" Moly Tie Rod

Plated 4130 chromoly, 36-1/2" long suitable for XXX front ends.

TXRC-600-SU0182



WELD Magnum 10" Direct Mount Hubs

CNC billet aluminium hubs.

WEC8082-A

XXX 600/Micro Sprint Thrust Bearing Shim

Two are needed per king pin.

TXRC-600-FE0652



XXX 600/Micro Sprint Thrust Bearing

TXRC-600-FE0653

XXX 600/Micro Sprint Spindles

Polished billet aluminium one piece aluminium spindle is light and strong. Spindles come complete with nut, spacers and grease fittings.



Right Hand TXRC-600-FA0008
Left Hand TXRC-600-FA0009



XXX 600/Micro Sprint King Pin Bushing

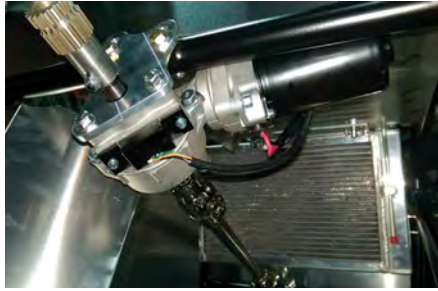
Sold individually.
TXRC-600-FA-0895



XXX 600/Micro Sprint Spindle Nyloc Nut

Sold individually.
TXRC-600-FA-0012

STEERING



XXX 600 Power Steering Kit

600 Mini Sprint Power Assist Steering Package. All components needed to add power steering to your 600. Connect this unit to your existing frame mounted steering box (600-ST-0004) for a power assisted steering system in your 600 mini sprint. Driver receives necessary power assist based on load. Excellent feedback for superior control throughout the race even on the roughest of tracks. Great for younger or smaller drivers.

Note: This unit is a power assist steering system. The unit only adds power/assistance to the steering when there is load on the steering. Complete Kit includes everything needed to mount and run:

- Power Steering Unit and Electrical Control Box
- Upper and lower u-joint
- Steering shaft
- Wiring kit with battery terminal connections and 1 simple connection for switch.
- Upper Steering Bracket (for mounting to chassis)
- Splined quick release hub and upper shaft
- All fasteners needed to install kit

TXRC-600-STK5000



XXX 600/Micro Sprint Steering Universal Joint

Billet steering joint is half the weight yet stronger than steel assemblies.

TXRC-600-ST0001



XXX 600/Micro Sprint Lower Steering Shaft

20-3/4" Long, 5/8" - 12 spline at each end.

TXRC-600-S-----



XXX 600/Micro Sprint Upper Steering Shaft

6" Long, 5/8" - 12 spline at one end and hex hub for quick release steering hub.

TXRC-600-ST0003



XXX 600/Micro Sprint Steering Box

Rack and Pinion steering box mounts directly to frame. 6" Long, 5/8" - 12 spline input shaft.

TXRC-600-ST0004



XXX 600/Micro Sprint Upper Steering Support

Upper steering support bracket, includes fitted brass bushings. Bracket supports 5/8" shafts, and utilizes 5/16" mounting holes.

TXRC-600-ST0005



XXX 600/Micro Sprint Drag Link

Runs from the steering box to the left front steering arm. The drag link is 14-1/2" Long x 3/4" O.D and has 3/8" threads.

TXRC-600-SU0021



XXX 600/Micro Sprint Tie Rod

Joins the left hand combo steering arm to the right hand steering arm. The tie rod is 36-1/2" long x 3/4" O.D and has 3/8" threads.

TXRC-600-SU0022



JOES Ultra Light Steering Wheel

13" Joes Ultra Light black anodised, aluminium steering wheel. 1" grip.
RS-13513-B



WILWOOD Quick Release Steering Hub

Lightweight billet aluminium hub features a spring loaded button that is non-removable and easy to use. The steel steering shaft adapter fits into a precision machined hex bore for a close tolerance fit. It is available to fit either a 5/8" or 3/4" shaft and accepts standard three bolt steering wheel pattern.

3/4" Shaft

5/8" Shaft



WB270-2016
WB270-2017

ENGINE

XXX 600/Micro Sprint Exhaust System

Full stainless steel exhaust system, complete with stainless muffler and clamp. Four into two into one design for maximum power. Suitable for Yamaha R6 engine only.

TXRC-600-EG0527



XXX 600/Micro Sprint Header

Stainless steel header only.

TXRC-600-EG0528



XXX 600/Micro Sprint Shift Lever

Lightweight 4130 Chrome moly construction, powder coated black. Lever suits Left hand shifting, and includes pin and washer.

TXRC-600-EG0007



XXX 600/Micro Sprint Shift Lever to Motor Linkage Rod

Adjustable aluminium rod comes complete with rod ends and jam nuts, and connects shifter to Yamaha R6.

TXRC-600-EG0057



SALDANA 600/Micro Sprint Radiator

Designed to be mounted within the XXX chassis. 3/4" NPT inlet and outlet, double pass aluminium radiator mounts directly into chassis.

SAL-MSRXXX1



XXX 600/Micro Sprint Clutch Lever

Lightweight black powder coated alloy lever clamps onto XXX gear shift lever. Includes cable adjuster.

TXRC-600-EG0012



XXX 600/Micro Sprint Clutch Cable - Suit Yamaha R6

TXRC-600-EG-0045



XXX 600/Micro Sprint Throttle Cable - Suit Yamaha R6

TXRC-600-EG-0044



XXX 600/Micro Sprint Battery Box

Aluminium construction is light weight and dzus's directly to the floor pan.

Dimensions:
6.5" L x 4" H x 4" W
TXRC-600-EG0039





XXX 600/Micro Sprint Motor Mount Kit
Full aluminium motor mount kit, including hardware. Suitable for Yamaha R6 engine. TXRC-JOE-25880

XXX 600/Micro Sprint Motor Adjuster
Aluminium rod comes complete with steel rod ends, and aluminium jam nuts. Fits XXX and PMP Chassis. TXRC-600-EG0043



WELD 10 x 8" Magnum 27 Spline Wheels

PART #	OFFSET	BEAD-LOC
WE734-10813	3	NONE
WE734-10814	4	NONE
WE734-10823	3	OUTER BEAD-LOC™

WINGS



XXX 600/Micro Sprint Wing Tree
Complete chrome plated 'H' design top wing tree supplied with internal sliders. Six adjustment holes spaced 1" apart.
• Top Width: 25" • Bottom Width: 25"
• Height: Minimum 11" • Height: Maximum 15"
• Upright Diameter: 5/8" • Upright Wall Thickness: 0.050"
• Wing Slider Mount: 3/8" • Wing Mounts (bosses): 3/8"
TXRC-600-TW0002

XXX 600/Micro Sprint Wing Post
Plated 4130 Chromoly. Built strong so they don't bend.
• Length: 8" • Wall Thickness: 0.065"
• T Diameter (top of post): 3/16" TXRC-600-TW0004

XXX 600/Micro Sprint Manual Wing Adjuster
Plated chromoly manual wing adjuster, with a total of 7" adjustment.
• Length: Minimum 14" • Length: Maximum 21" • Bosses: 3/8"
• Wall Thickness: 0.050"
TXRC-600-TW0007

XXX 600/Micro Sprint Bent Nose Wing Posts
Bent sideways to mount to centre chassis spuds, and then to nose wing sideboards. Chrome plated 4130 Chrome moly.
• O.D: 3/4" • Wall Thickness: 0.0625"
TXRC-600-TW0025

XXX 600/Micro Sprint Straight Nose Wing Posts
Plated 4130 chromoly, designed to mount from centre chassis spuds to centre mounts on nose wing.
• O.D: 3/4" • Wall Thickness: 0.0625"
TXRC-600-TW0030

XXX 600/Micro Sprint Rear Nose Wing Strap
Stainless steel aero rear nose wing strap, channelled for strength. Five adjustment holes at 3/4" spacing.
• Length: 11-1/2" • Width: 1-1/8" • Height: Minimum: 7-3/4"
• Height: Maximum 10-1/2"
TXRC-600-TW0031

HARDWARE

TXRC 600/Micro Sprint Left Front Steering Arm - Drag Link Spacer
This spacer sits between the left front steering arm, and the drag link. TXRC-600-FE0837

XXX 600/Micro Sprint Left & Right Front Steering Arm Spacer
This spacer sits between the steering arm and tie rod for clearance, needed on the left and right front. TXRC-600-FE0889



XXX 600/Micro Sprint Steel Bolt Kit
This kit include bolts to accommodate for:
• Rear Radius Rod To Frame • Brake Rod To Frame
• Brake Rod Bird Cage • Front Radius Rod To Frame
• Shock To Frame • Shock To Front Axle
• Left Rear Shock To Arm • Right Rear Shock To Arm
• Radius Rod To Front Axle • Panhard Rod To Frame
• Nerf Bolt • Wing Tree/Slider To Frame
• Wing Slider To Tree • Wing To Tree
• Wing Tree Pinch Clamps • Upper Steering Clamp To Frame
• Steering Gear To Frame • Watts Link To Frame
• Motor Adjuster To Frame • Tie Rod, Right Front
• Drag Link, Tie Rod, Left Front • Drag Link To Steering Box
• Watts Link To Birdcage • Tank bolts
TXRC-600-SU2846



WELD 10 x 10" Magnum 27 Spline Wheels

PART #	OFFSET	BEAD-LOC
WE734-11052	2	BEAD-LOC™ & COVER
WE734-11053	3	BEAD-LOC™ & COVER
WE734-11054	4	BEAD-LOC™ & COVER

WELD 10" Wheel Halves

PART #	SIZE	BEAD-LOC™
WEP851-1020	10x2	NONE
WEP851-1030	10x3	NONE
WEP851-1030B	10x3	NONE - BIG BELL INNER
WEP851-1035	10x3	BEAD-LOC™ & COVER
WEP851-1040	10x4	NONE
WEP851-1050	10x5	NONE
WEP851-1055	10x5	BEAD-LOC™ & COVER
WEP851-1060	10x6	NONE
WEP851-1065	10x6	BEAD-LOC™ & COVER
WEP851-1075	10x7	BEAD-LOC™ & COVER

WELD 10" Magnum Wheel Replacement Parts

Centre Bolt Kit	WEP613-7050
Bead-LOC™ Bolt Kit	WEP650-3009
Bead-LOC™ Threaded Insert Kit	WEP650-3011
Mud Cover	WEP650-4014A
Mud Cover Dzus Fastener Kit - 12 Piece Kit	WEP650-4600
Bead-LOC™ Ring Only	WEP650-5202
Bead-LOC™ Ring & Cover™	WEP650-5310



SALDANA 600/Micro Wheel Wrench
SAL-WW-MICRO



HRP 10" Bead Breaker
HRP-6018

WHEELS



WELD Magnum 10" Splined Centres
WEP613-7082



WELD 10" Direct Mount Wheels

PART #	SIZE	OFFSET	BEAD-LOC
WE860-10613	10x6	3.00	NONE
WE860-10623	10x6	3.00	OUTER BEAD-LOC™
WE860-10653	10x6	3.00	BEAD-LOC™ & COVER
WE860-10713	10x7	3.00	NONE

FUEL TANK

SALDANA Retro 8 600/Micro Sprint Tank
Keeping the fuel low and forward in your tank, the Retro 8 design is preferred by most major chassis builders because of the extra forward bite the fuel cell provides. SAL-MS216-TR



DRIVELINE



XXX 600/Micro Sprint Chain Guide Kit - Disc Style
Two 12" aluminium discs bolt either side of the rear drive sprocket, guiding the chain onto the sprocket. Kit includes discs, spacers, and 5/16" mounting nuts and bolts. TXRC-600-SU0195

XXX 600/Micro Sprint Chain Tensioner Kit
Designed to float with natural chain motion to allow the chain to move freely. Each roller rotates on bearings causing minimal drag on the engine. Supplied complete with bearings, springs and spring clips. TXRC-600-DC0002

XXX 600/Micro Sprint Chain Tensioner Wheel
Sold individually, and includes bearings. TXRC-600-DL0003

XXX 600/Micro Sprint Chain Guide Kit - Block Style
Nylon chain block guides chain onto sprocket, kit includes aluminium bracket, block and mounting bolts. TXRC-600-SU0196

XXX 600/Micro Sprint Chain Guide Replacement Block
Replacement nylon chain block guide only, sold individually. TXRC-600-SU0198

REAR END



XXX 600/Micro Sprint Complete Rear End

Complete 52" x 1-7/8" rear axle assembly.

Complete Rear Axle Includes:

- 52" Rear Axle Tube
- Splined Rear Axle Nuts • Sprocket/Rotor Hub • 1/4"-28 mounts
- Ultralight Rear Brake Rotor • Sprocket/Rotor Hub
- 5/16"-20 mounts • Complete Rear Brake Carrier • Bird Cages
- 2" Tapered Axle Spacer • 1" Tapered Axle Spacer
- 1/4" Axle Spacer • 1/2" Axle Spacers • 3 x 3/4" Axle Spacer
- 2 x 1" Axle Spacers • 2" Axle Spacer • 3-1/4" Axle Spacer
- 4-5/8" Axle Spacer • 7-3/4" Rear Axle Spacer

TXRC-600-SU9000



XXX 600/Micro Sprint Rear Axle Tube

Aluminium 52" axle tube only. 1-7/8" Diameter, with 1-3/4" splines and threads. 14-1/8" centre spacing and 0.45" Wall Thickness.

TXRC-600-SU0101

XXX 600/Micro Sprint Bearing Retainer Snap Ring

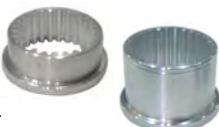
Suited to the brake carrier bearing and bird cage bearings.

TXRC-600-SU-0201



XXX 600/Micro Sprint Splined Bearing Spacers

To be used with 1-7/8" axles, and come in two sizes for single or double bearing bird cages.



1-1/4" Double Bearing Birdcage Splined Spacer TXRC-600-SU0017
Single Bearing Birdcage Splined Spacer 5/8" TXRC-600-SU0018

XXX 600/Micro Sprint Rear Axle Nuts

Anodised aluminium axle nuts suit the XXX rear axle.

Right Hand TXRC-600-SU0102
Left Hand TXRC-600-SU0103



XXX 600 Axle Spacer Kit Black

600 Mini Sprint Black Rear Axle Spacer kit. For use with 1 7/8" Axles. 11 Spacers total in the set; 6 Standard and 5 Tapered. All the spacers you should need to get the offsets you want. See kit details below for a list of each spacer in the kit.

Standard

- (2) 1/4" Standard Spacer
- (2) 1/2" Standard Spacer
- 3/4" Standard Spacer
- 1" Standard Spacer

Tapered

- (2) 3/4" Tapered Spacer
- (2) 1" Tapered Spacer
- 2" Tapered Spacer

TXRC-600-SU0453B

XXX 600/Micro Sprint Bird Cages

CNC machined bearing carriers feature double heavy duty double roller bearings, and include snap rings. XXX bird cages suit 1-7/8" axles and have a measured distance of 6" between the radius rod and torsion arm pick ups.

Left Side Bird Cage TXRC-600-SU-0192
Right Side Bird Cage TXRC-600-SU-0193



XXX 600/Micro Sprint Rear Torsion Arms

CNC machined polished aluminium.

Left Rear Torsion Arm TXRC-600-SU0173
Right Rear Torsion Arm TXRC-600-SU0174

XXX 600/Micro Sprint Jacobs Ladder

Chrome plated, 10-1/4" jacobs ladder includes aluminium straps. Jig fabricated out of 1/2" x 0.065" wall chrome moly tubing

TXRC-600-SU0002



BRAKES

XXX 600/Micro Sprint Rear Brake Rod

Heavy duty 4130 chrome moly rod, 20" long with 7/16".

TXRC-600-SU0025

XXX 600 Micro Sprint Rear Brake Carrier

600 Micro Sprint Rear Brake Carrier. Black. The aluminium single row bearing design saves weight over bulkier, more awkward designs. Comes complete with snap ring and bolts, so you don't have to spend time searching for hardware to assemble your brake system. 3.25" Spread Caliper Mounts Directly to Carrier.

TXRC-600-BK0002B



XXX 600/Micro Inboard Brake Rotor

Steel rotor is 9.5" O.D and 3/16" thick. It utilises 6 on 5-1/4" bolt pattern with 1/4" bolts.

TXRC-600-BK0001



XXX 600/Micro Sprint Drive Sprocket/Brake Rotor Hubs

CNC Machined aluminium hubs come in two styles to suit different mounting bolt centres.

1/4"-28 Threaded Bolt Holes TXRC-600-SU0180
5/16"-20 Threaded Bolt Holes TXRC-600-SU0181



XXX 600 Left Front Brake Rotor

Keizer 600 Micro Sprint Front Brake Rotor. Bolts directly to the Keizer left front hub with use of the Triple X left front brake bracket. A great tool for helping turn your car at corner entry, a quick stab or roll on to the brake entering the corner at high speed will begin your car's rotation, allowing you to maintain your high RPMs and blow by your fellow drivers at corner exit. Durable steel will last you many races before you have to replace it.

TXRC-600-BK0003



XXX 600 Left Front Brake Caliper Mount

XXX 600 Micro Sprint Left Front Brake Bracket. This steel bracket attaches the MCP front caliper and Keizer front rotor to the Triple X spindle. Mounting bolts sold separately.

TXRC-600-BK0004



MCP Left Front Brake Caliper

TXRC-MCP-1375



SUSPENSION

PRO Threaded Small Body Shocks

Pro have been the worlds innovation and shock technology leaders since 1983. A mix of on track testing, technical experience and engineering allow Pro Shocks to stand heads above the rest in performance and quality.

6" Body 6" Stroke TXRC-ASB62.05B **7" Body 7" Stroke TXRC-ASB730B**
TXRC-ASB620B **TXRC-ASB731B**
TXRC-ASB624B **TXRC-ASB734B**
TXRC-ASB625B **TXRC-ASB740B**
TXRC-ASB626B
TXRC-ASB630B
TXRC-ASB640B



Custom Valving and Stroke's available by Special Order



PRO Rebound Adjustable Smooth Body Shocks

Pro adjustable shocks are so user friendly that even the entry level racer can use it effectively. Totally adjustable on the rebound, without affecting the compression.

1/2" Body 6" Stroke TXRC-ASB620-5B **7" Body 7" Stroke TXRC-ASB723-7B**
TXRC-ASB623-7B **TXRC-ASB733-7B**
TXRC-ASB740-5B
TXRC-ASB743-7B



Custom Valving and Stroke's available by Special Order

XXX 600/Micro Sprint Plastic Torsion Bar Bush

Made from heavy duty nylon material, suitable for 7/8" torsion bars.

TXRC-600-CH3001



XXX 600/Micro Sprint Aluminium Torsion Stop

Aluminium torsion stops come complete with pinch bolt, adjuster bolt and jam nut.

TXRC-600-SU0170

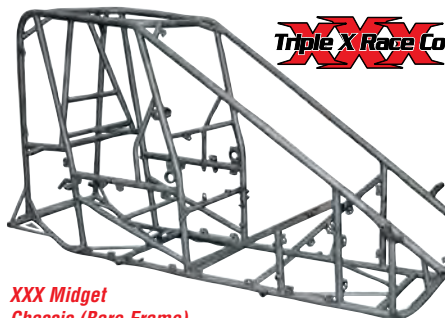


XXX 600/Micro Sprint Aluminium Radius Rod's

XXX 600/Micro Sprint use a 3/4" panhard bar and radius rods on the front, while the rear radius rods are 7/16".

Panhard/Front Radius Rod 15-1/2" TXRC-600-SU0019
Left Rear Radius Rod 20" TXRC-600-SU0023
Right Rear Radius Rod 21" TXRC-600-SU0024

MIDGET CHASSIS & ACCESSORIES



XXX Midget Chassis (Bare Frame)

One of the highest quality chassis on the market, race proven by some of the best racers in the business. As with previous products, XXX has succeeded at bringing the midget chassis, and it's componentry to the racer cost effectively. From the drawing board to construction, the XXX midget has been designed with the most common dimensions available on the market, making it as compatible as possible with other brands.

Technical Specifications:

- Material: 100% Chrome moly Tubing.
- Weight: 115lbs.
- Chassis Geometry: Same common dimensions as most chassis on todays market, pick up points, motor plate location, torsion tube location, etc.
- Wheel Base/Motor Setback: 71" Wheel Base / 33" Motor Setback
- Suspension: Coil Over Front Torsion Bar Rear.
- Torsion Bar Length: 28"
- Torsion Bar Diameter: 1"
- Torsion Bar Split: 1-3/4"

Features:

- 53" Tall Chassis
- 100% Chrome moly Chassis
- Threaded Shock and Radius Rod Pick Ups

TXRC-MID-CH1000



HRP Midget Rock Screen

Lightweight 4130 chrome moly, powder coated black, 8-1/2" x 23".

HRP-8069M



KIRKEY Midget Leg Protector

Light weight aluminium formed to surround centre steering uint. Bead rolled for extra strength.

K199502