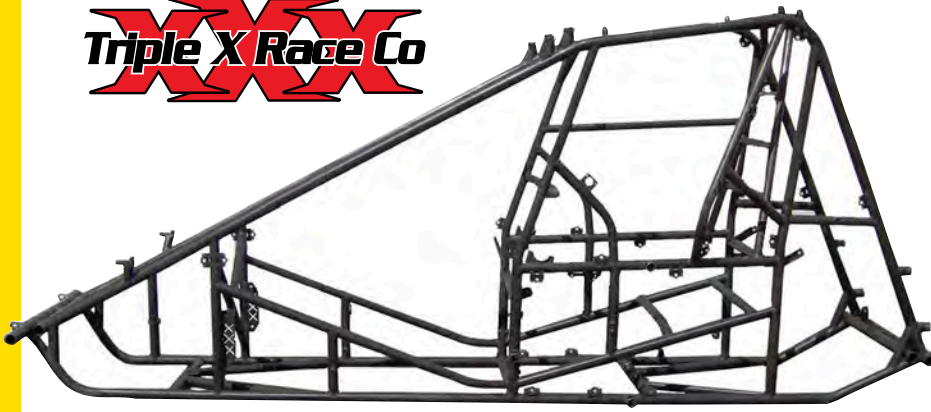


CHASSIS



XXX Raked Cage Sprint Car Chassis

Race proven quality and craftsmanship has shot the XXX product to numerous 410/360, winged and non-winged championships and race wins across the world. The 87/40 and 88/40 raised rail chassis has been designed with the most common dimensions available on the market today. Entirely constructed of certified and tested TIG welded 4130 Chrome moly tubing.

Technical Specifications

- 100% Chromoly Tubing • Weight: 195lbs. • Torsion Bar Split: 1 3/4"
- 1" Raised Rail • Torsion Bar Length: 30"

Features

- 90° Shock towers to save shock absorbers in accidents • Long rear radius rod provision
- Gnarled torsion tubes for a slip free surface when mounting front wing post clamps
- Centre mount 1" nose wing post spuds • Half and full box steering mount provision
- Dual top wing post/tree mounts • Rake cage, suitable for tall or short drivers
- Right side intrusion bar • Torque tube hoop

Options

- 87" or 88" wheelbase

XXX 87/40 Sprint Chassis

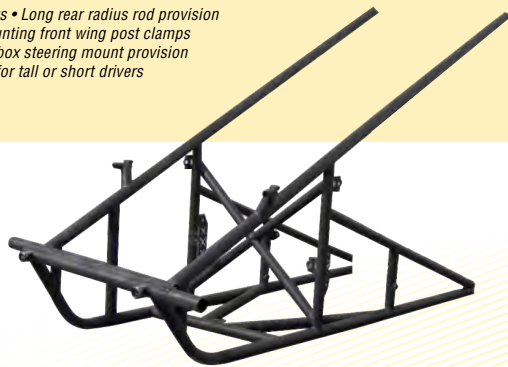
TXRCSC1000872S

XXX 88/40 Sprint Chassis

TXRCSC1000882S

XXX Sprint Car Chassis Replacement Front Clip

Full chassis from the Engine plate forward including down tubes. Constructed of the same 100% certified and tested Chromoly as the XXX chassis.



Available for Standard or Tall Chassis. Call for details.

CHASSIS ACCESSORIES



XXX Sprint Car Halo

4130 chromoly, compatible with XXX and many other chassis. Encloses the top of the roll cage for greater driver safety. Built 24-5/8" wide and 7-7/8" from front to back. TXRC-SC-CH-0020



Bolt On Head Protection Bars

Fit most chassis – call for compatibility. BHR091

XXX Torque Tube Hoop

4130 chromoly. 6-1/2" centre – centre. TXRC-SC-CH-0007

HRP Torque Tube Hoop

7" centre-centre HRP-8065



HRP Wing Valve Tab HRP-0009T.125



HRP Master Cylinder Tab HRP-0137T



HRP Brake Pedal Tab .200" hole O.D HRP-0096T

HRP Half Box Steering Tab

Accepts half box style mounting brackets. Sold individually. HRP-0125T



HRP Down Tube Wing Spud 1.250" x .120" HRP-3081W



HRP Brake Line Tab Suitable for #3 Bulkheads. HRP-0093F



HRP Nerf Bar Spud Front & Side Nerfs HRP-3050W Rear Nerf HRP-3060W



HRP SureLoc Shifter Tab Weld on tab – suit DMI and Winters shifters. HRP-0127T

HRP Radiator Mount Tab 4130 Chromoly, 7 1/2" long. HRP-0090F



XXX Wing Tree Tab Designed to replace rear wing tree tab on almost any sprintcar. TXRC-CJ-14

XXX Wing Ram Tab

Chassis tab for hydraulic wing ram. Able to be fitted to any chassis. TXRC-CJ-13



XXX Front Shock Towers

90 degree shock towers will suit any chassis. Left Front TXRC-SPUD-0031 Right Front TXRC-SPUD-0032



XXX Top Wing Spud

Spud and gusset available separately. Wing Post Spud TXRC-SPUD-0023 Wing Post Gusset TXRC-SPUD-0017



XXX Fuel Cell Tabs

Suitable to replace the fuel cell mounts on any chassis using an outlaw style tank.

Upper Cell Mounts TXRC-SPUD-0016 Lower Cell Mounts TXRC-SPUD-0024



XXX Chassis Steering Box Clamp Left Side

Supplied complete with two bolts this kit will weld onto any chassis. TXRC-SPUD-0021



Transponder Pouch

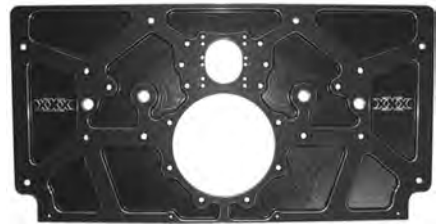
RS-JOE17510



SCI Billet Transponder Bracket

RS-SCI-1104

MOTOR PLATES



XXX Aluminium Rear Motor Plate

Black anodised. Lightened on inside so dirt can't get trapped in lightening pockets. All holes are drilled and tapped, with multiple pump mounting holes for standard or raised cam engines. Suit XXX, Maxim, and Eagle. TXRC-SC-EG0006B



SCI Long Raised Rail Black Motor Plate

RS-SCI-1197



LRB 3° Motor Plate Wedge

Designed to create more forward drive, the pair fit between the chassis and the engine plate to create a 3° inclination. RS-LRBWDGE-E/M



SCI Motor Plates

Designed to allow the chassis to flex at the front. CNC machined 2024 aluminium is black anodised and bushes are replaceable. Bushed Front Motor Plate RS-SCI-1165 Replacement Bushes RS-SCI-1164



DMI Light Weight Aluminium Front Motor Plate

Pre drilled and tapped for oil tank bracket. DMI-SRC2830



MOOSE Bushed Front Motor Plate

Bushed where it bolts to the chassis, the torque and power of modern sprintcar engines give motor plates a beating. Replaceable bushes allow for longer service life.
MOO-2115



MOOSE Bushed 2 Piece Front Motor Plate

Black anodised billet aluminium two piece plates are bushed to bolt to the chassis, the torque and power of modern sprintcar engines give motor plates a beating. Replaceable bushes allow for longer service life.
MOO-2135



MOOSE Replacement Motor Plate Bushes
Supplied as a pair. Suits all Moose motor plates.
MOO-2045

SPP Chassis to Top of Block
3/8-16 x 2-1/2"
SPPHH375-16-2500

SPP Motor Plate to Chassis Bolt
3/8-24 x 2-3/8"
SPPHH375-24-2375

SPP Front & Rear Motor Plates to Block
3/8-16 x 1-1/8"
SPPHH375-16-1125

PEDALS

XXX Gas Pedal

Black powdercoated 4130 Chromoly tube 12" Long and 4" wide.
Weight: 0.6 lbs
TXRC-SC-CH-0006



HRP 12" Gas Pedal
4130 Throttle Pedal
Titanium Throttle Pedal

HRP-8105
HRP-8106



XXX Carbon Throttle Pedal
TXRC-SC-CH-0006C

HRP 9" Short Gas Pedal
4130 Chromoly steel coated black or titanium.
Chromoly HRP-8107
Titanium HRP-8108



HRP Brake Pedal
4130 Std Rail
Titanium STD Rail
Raised Rail
Titanium Raised Rail

HRP-8100
HRP-8101
HRP-8100RR
HRP-8101RR



XXX Brake Pedal Raised Rail

Black powdercoated 4130 Chromoly pedal to suit raised rail cars. 13" Long from chassis pivot to bottom. 2-3/8" centre - centre from chassis pivot to master cylinder spud. 5" wide.
Weight: 0.4 lbs
TXRC-SC-CH-0005



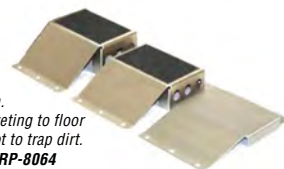
XXX Carbon Fibre Raised Rail Brake Pedal
TXRC-SC-CH0005CF



SALDANA Floor Mount Gas Pedal
SAL-TP



HRP Heel Riser Foot Retainer
HRP-8056

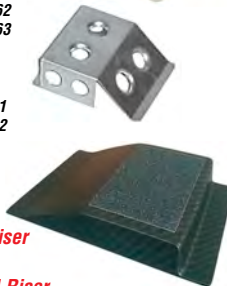


HRP Heel Riser

Fabricated aluminium. Pre drilled for pop-rieveting to floor pan, and designed not to trap dirt.
1/2" Heel Riser HRP-8064
1 1/8" Heel Riser HRP-8062
1 1/2" Heel Riser HRP-8063

SALDANA Heel Riser

1" Height SAL-HR-1
2" Height SAL-HR-2



XXX 1" Carbon Heel Riser

TXRC-SC-CF7297CF

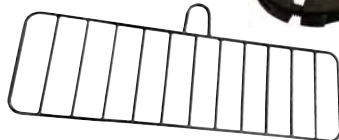
XXX 1 1/2" Carbon Heel Riser

TXRC-SC-CF6335CF

ROCK SCREENS

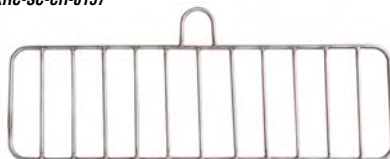
Rock Screen Clamp

TXRC-SC-CH-0158



XXX SPRINT CAR ROCK SCREEN

XX Sprint Car Rock Screen. Black powder coated. Mandrel bent steel screen easily attaches to the roll cage uprights of most all Sprint Car chassis and adds protection for the driver from debris entering the cockpit. Slots are 2" apart. Width: 25". Height: 7 1/2". Color: Black, Slots: 2" wide.
TXRC-SC-CH-0157



XXX Titanium Rock Screen
TXRC-SC-CH-0157T



HRP Titanium Rock Screen
HRP-8068-S

BUMPERS & NERFS

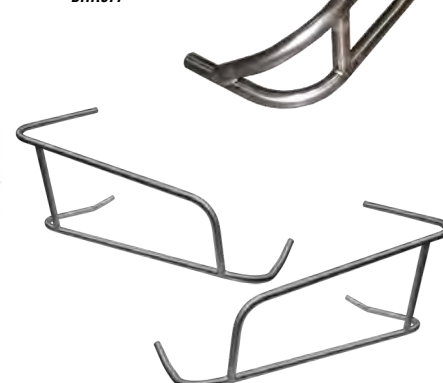


Front Bumpers

Designed to fit all major chassis manufacturers specifications.

Stainless Front Bumper
BHR076

Stainless Double Row Bumper
BHR077



Double Row Nerf Bars

The most protection for your headers, mufflers and car from being damaged. Double row nerfs also help to prevent jumping wheels in tight racing situations.

Left Hand Nerf BHR080
Right Hand Nerf BHR081



Nerf Bars

Jig Fabricated for Standard or up rail sprint car's. Designed to fit all major chassis manufacturers specifications. Stainless steel.

Shorty R/H Stainless BHR083
Shorty L/H Stainless BHR082
Long R/H Stainless BHR085
Long L/H Stainless BHR084



Double Row Front Bumper
TXRC-SC-BN-9276B



Front Bumper
TXRC-SC-BN-0019B



XXX Black Bumpers & Nerfs
Shorty R/H Shorty Nerf
TXRC-SC-BN-0002B



Shorty L/H Shorty Nerf
TXRC-SC-BN-0004B



Rear Bumper w/ Post & Braces
TXRC-SC-BN-0006B



Rear Bumpers

Available in different styles and designed to fit all major chassis manufacturers specifications and dimensions.

Basket Rear Bumper BHR078
Rear Bumper w/ Post & Braces TXRC-SC-BN-0012

SPP Titanium Nerf Bar Bolts
10/32 X 1-1/2"
SPPHL-10-32-1500



Bumper And Nerf Hardware Kit

Includes all nuts and bolts for front and rear bumpers, and left and right nerfs.
TXRC-SC-BN-3472

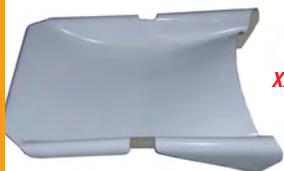


Titanium Nerf Bar Bolt Kit

Super light titanium nerf bolt kit with jet nuts. Includes all nuts and bolts for front bumper, rear bumper, left and right nerfs. Fits all cars. Bolt Material:

Titanium Bolt Size: 10-32 x 1.50"
Hex Socket Cap Nuts: 10-32 Jet Nut
TXRC-SC-BN-3500

HOODS & SCOOPS



XXX Clean Air Scoop
Suited to the XXX "Clean Air" hood.
Gel Coat White
TXRC-SC-BW-0022

Available by special order in Black and Carbon Fibre

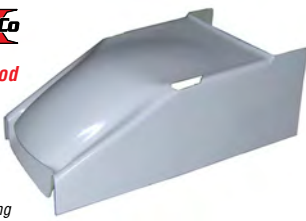


XXX Clean Air Hood

Takes only cool, clean air from the airbox and directs it to the injection. All dirty air is pushed over and around the motor, keeping engine and air filter free of dirt and debris.

White Gel Coat TXRC-SC-BW-0023

Available by special order in Black and Carbon Fibre



XXX Dual Duct Scoop

Suits Dual Duct Hood.
Standard Cage - White Gel Coat TXRC-SC-BW-0050
Rake Cage - White Gel Coat TXRC-SC-BW-0075
Tall Chassis - White Gel Coat TXRC-SC-BW-0082

Available by special order in Black and Carbon Fibre



XXX Dual Duct Hood

Two outer inlets let engine breathe cool, clean air evenly into the injectors. Middle and side vents remove warm air from behind the radiator, and sweep it away from the engine bay and injection.

Standard Cage - White Gel Coat TXRC-SC-BW-0051
Tall Chassis - White Gel Coat TXRC-SC-BW-0068

Available by special order in Black and Carbon Fibre



XXX Sprint Car Dual Duct Inside The Rail Nose

Fiberglass nose for the "Dual Duct Inside The Rail" hood. Gel-Coated white. Two outer outlets (on the hood) lets engine breathe cool, clean air evenly into the injectors from underneath the nose. Style: Inside the rail dual duct. For use with hood TXRC-SC-BW-6837. Fits: Standard and Wedge Style 87" or 88" Chassis.
TXRC-SC-BW-6119

Available by special order in Black and Carbon Fibre



XXX Inside the Rails Dual Duct Hood

Two outer inlets let engine breathe cool, clean air evenly into the injectors. Middle and side vents remove warm air from behind the radiator, and sweep it away from the engine bay and injection.
Gel Coat White TXRC-SC-BW-6837

XXX Hood Plate

Hood Plates are sold separately for down tube style hoods. Aluminium. Pre drilled. Rivets to the outer side of the hood, and allows top flap to dzus in place.
TXRC-SC-BW-0100

Hood Blanket

Great for keeping the heat in engine and engine bay between races.
RS-KRP015



ARM GUARDS

XXX Left Hand Wedge Full Arm Guard

Full Enclosure Left Arm Guard. 2" Taller and Wedge Chassis. Fiberglass. Gel-Coated white. Completely encloses the left side of the cockpit leaving a small opening for driver entry/exit. Deflects air around the driver and rear of the car. Light and strong. Only fits cars with no left side safety bar.

Material: Fiberglass
Color: White
Finish: Gel-Coated
Style: For use on cars with no left side safety bar.
Fits: 2" Taller and Wedge Style Chassis. 87" or 88".
Weight: 3.8 lbs
TXRC-SC-BW-6599



XXX Left Hand Arm Guard

Designed to shape around the left side safety cage and enclose the left side of the cockpit, deflecting air around the driver and the rear of the car.

Standard Chassis - Gel Coat White TXRC-SC-BW-0003
Tall Chassis - Gel Coat White TXRC-SC-BW-0057

Available by special order in Black and Carbon Fibre



XXX Wedge Right Hand Arm Guard

Moulded wedge shape for extra elbow room. Designed to be used with new style "Dual Duct" hood, and will work with most hoods on the market.



Tall Chassis - Gel Coat White TXRC-SC-BW-0061



XXX Bubble Right Hand Arm Guard

Moulded with bubble shape for extra elbow clearance.
Gel Coat White
TXRC-SC-BW-0025

Available by special order in Black and Carbon Fibre

FLOOR PANS



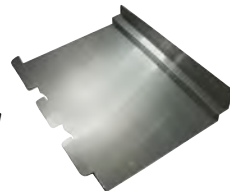
XXX Aluminium Wrap Around Floor Pan

Will suit XXX/Maxim style raised rail cars that use wrap around style floors. Measurement is obtained from centres of tube below motor plate, to rear K - brace.

15-1/2" Floor Pan TXRC-SC-BW-0013
17-1/2" Floor Pan TXRC-SC-BW-0007

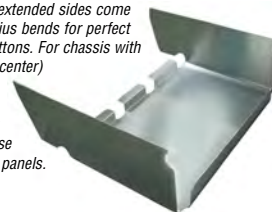
XXX Aluminium Drop In Floor Pan

Radius bends for perfect drop in fit. Suits 15 1/2" centres from bar below motor plate to rear K - brace.
TXRC-SC-BW-0015



XXX Extended Side Floor

Aluminium floor Pan with extended sides come up above the muffler. Radius bends for perfect fit. Not drilled for dzus buttons. For chassis with 15 1/2" spread (center to center) from bar below motor plate to rear K-Brace. Super strong 0.080" thick to protect your feet. For use with fiberglass upper kick panels.
TXRC-SC-BW-0016



HRP Aluminium Drop In Floor Pan

Designed for standard rail cars.
HRP-8317

