



Aluminum Stud Girdles

Stud Girdles reduce flex and part breakage. Increased valvetrain rigidity helps minimize energy loss. Each set comes with aluminum stabilizers and poly locks. Two pieces per set.

Fits Chev small block.

PR66950 For use with 3/8" stud

PR66951 For use with 7/16" stud

Fits Chev big block.

PR66981 For use with 7/16" stud



AFR ROCKER STUD GIRDLES

These AFR stud girdles are designed to eliminate the rocker stud flexing and associated horsepower loss that come with today's high-lift cams and high-pressure valve springs. They are manufactured from sturdy anodized aluminum to keep your valvetrain rigid for maximum engine performance. Available Chevy and Ford AFR heads, the AFR stud girdles will maintain valvetrain longevity throughout the engine's entire rpm range. Adjusting nuts sold separately.

DESCRIPTION

DESCRIPTION	PART NO.
SBC AFR Stud Girdle, Offset	AFR6208
SBC AFR Stud Girdle, Standard	AFR6200
BBC AFR Stud Girdle, 2006-2012	AFR6210
BBC AFR Stud Girdle, 2013-On	AFR6202
SBF AFR Stud Girdle, 289-302-351W	AFR6207
BBF AFR Stud Girdle, 429-460	AFR6209
SBC/SBF 3/8" Adjusting Nut (1)	AFR6216
SBC/SBF 7/16" Adjusting Nut (1)	AFR6214
BBC 7/16" Adjusting Nut, Intake, 2.60" OAL (1)	AFR6215
BBC 7/16" Adjusting Nut, Exhaust, 2.00" OAL (1)	AFR6214
BBF 7/16" Adjusting Nuts, 2.20" OAL (8)	AFR6213



Rocker Stud Girdles

COMP Cams stud girdles are made of 6061-T6 aluminum for light weight and red anodized for durability. They are a one-piece, solid bar design to tie the studs together as well as properly locate them. Conventional two-piece, spring loaded designs are also available for Small Block Chevrolets. Kits are complete with hex head adjusting nuts, interlocking set screws and all hardware.

Description	Stud Diam.	Part No.
Chevrolet 265-400 Solid Bar Design	3/8"	C04007
Chevrolet 265-400 Solid Bar Design	7/16"	C04009
Chevrolet 265-400 Spring Loaded	3/8"	C04001
Chevrolet 265-400 Spring Loaded	7/16"	C04004
Chevrolet 265-400 40/60 Spacing	7/16"	C04004
Chevrolet 396-454 Solid Bar Design	7/16"	C04021
Ford 289-302-351W Solid Bar Design	3/8"	C04013
Ford 289-302-351W Solid Bar Design	7/16"	C04014
Ford 289-302-351W Solid Bar Design (RHS, Pro Action, Motorsport)	7/16"	C04015
Ford 351c Solid Bar Design (Motorsport, Alloy Heads)	7/16"	C04016

Stud Girdle Rocker Arm Adjusting Nuts

All COMP Cams rocker arm adjusting nuts are designed for the ultimate in strength and locking force. They are precision-ground for minimum runout and are tapered for extra strength in the locking area. The special alloys in the polylocks ensure a quality and strength not found in any other competitive products

STUD GIRDLE ADJUST NUT 7/16"	C04508-1
STUD GIRDLE ADJ NUT 7/16" W/SNAP RING	C04508S-1

ROCKER COVER CONVERSIONS



Valve cover adapter (pair).

Allows centerbolt small block Chevy valve cover installation on early Chevy heads with flange bolt valve covers.

Includes hardware

TN8100



BILLET SPECIALTIES LS VALVE COVER ADAPTERS

Allows the use of standard small block Chevrolet valve covers on a LS motor for a classic look.

- Machined from 6061-T6 Aluminium
- Utilizes OEM LS valve cover gasket on bottom and cork gasket on the top
- Hardware included
- Requires coil re-location

BS95030



Small Block Chevy Valve Cover

Adapter Kit for LS Engines

This new Small Block Chevy billet aluminum adapter kit from Inglesse™ enables mounting traditional Gen I SBC valve covers on a Gen III/IV LS engine. Specifically, the adapters work with center bolt LS heads and perimeter bolt traditional SBC valve covers. Give your late-model engine the classy look of a traditional SBC, and further the retro look of transplanted LS engines in muscle cars. CNC-machined from billet aluminium, the SBC Valve Cover Adapter Kit features an o-ring channel for reuse of stock LS valve cover seals, as well as featuring the same oil-deflecting lip on the spacer. Compatible with all LS valve train components, rockers and springs. Kit includes all necessary hardware.

CO-NG4011

VALVE COVERS & ACCESSORIES



HOLLEY VINTAGE SERIES VALVE COVERS

Holley is pleased to offer their Vintage Series Valve Covers. These new products are the first of the Vintage Series family of die-cast aluminium dress up products featuring a classically inspired finned design and a retro-style Holley script brand mark.

- Die-cast aluminium construction ensures high detail and reduces the opportunity for warping of the valve cover flange and oil leaks
- 3-1/2" tall with pre-installed internal oil baffles (oil fill and PCV grommets also included)
- Available with and without emissions provisions for your custom application (emissions compliant model includes pre-installed internal oil baffles in both covers, as well as PCV and oil fill grommets)
- Available finishes offered are as cast, satin black with machined fins, and polished

Description	Part No
SB Chev Natural Finish	H0241-240
SB Chev Polished Finish	H0241-241
SB Chev Black Finish	H0241-242
SB Chev Black Finish - Center Bolt	H0241-247



Victor Jr. Racing Valve Covers

These lightweight, high-strength die-cast aluminium valve covers for small-block Chevy feature black powder-coating and a machined top with the distinctive Edelbrock Racing logo. They are tall enough to clear stud-mounted roller rocker arms, and have no breather holes for a clean appearance. There are provisions for breather baffles, so you can drill out the breather holes and install baffles if desired.

Victor Jr. Racing Valve Covers

For S/B Chevy (2.70" tall)

ED4149



Racing Valve Covers FOR SMALL-BLOCK CHEVY

Lightweight, high-strength die-cast aluminium valve covers provide ample clearance for all popular valvetrains on all cylinder heads. They include gasket retaining tabs for positive retention. They are available with or without oil breather tubes for custom plumbing. For circle track racing, valve covers with breathers have two tubes on one side and none on the other. Breather tubes include baffles. Edelbrock aluminium racing valve covers are available in three finishes - polished, black powder-coated or as-cast and with or without the Edelbrock logo

Racing Valve Covers without tubes

Without Edelbrock logo (3-3/4" tall)

Racing Valve Covers with tubes As-Cast Black

With Edelbrock logo (3-3/4" tall)

Polished

ED4154

ED4167



VICTOR SERIES VALVE COVERS

WITH BLACK POWDER COAT TEXTURE FINISH

Our Victor Series valve covers have a black powder coated finish that features a finely textured surface for a pleasing and unique appearance. This is the same finish you'll find on our top-of-the-line Edelbrock/Musi 555 Crate Engine. These valve covers are manufactured from die-cast aluminium and machined with 1-1/4" breather hole. Overall height is measured from base to top at the highest point.

Application	Overall Height	Part #
1959-86 Chevy 262-400 - (low)	2.50"	ED41713
1959-86 Chevy 262-400 - (tall)	3.75"	ED41733
1986-95 Chevy 262-400 with left breather hole - (centerbolt)	2.50"	ED41723
1965 & later Chevy 396-502 - (tall)	3.75"	ED41803
1965 & later Chevy 396-502 - (short)	2.75"	ED41813
Ford 289/302/351W (except Boss) - (low)	3.90"	ED41253
Ford 289/302/351W (except Boss) - (tall)	3.88"	ED41263



SIGNATURE SERIES VALVE COVERS

WITH BLACK POWDERCOATED FINISH

Dress your engine up with our new Signature Series Black powder coated finish, valve covers and breather for a distinctive modern look. These accessories are stamped from 18-gauge steel and feature a subtle textured black powder coated finish with a screen printed Edelbrock logo for great looks from the name you can count on - Edelbrock! Designed for function, these valve covers have stock style breather baffles that prevent oil passage to the PCV valve. These quality valve covers accept all emissions equipment, including PCV valve. Rubber grommets for the breather and PCV valve holes included. Matching breather sold separately.

Application	Overall Height	Part #
Chevrolet 262-400 1959-86 (low)	2.08	ED4443
Chevrolet 262-400 1959-86 (tall)	3.70"	ED4643
Chevrolet 396-502 V8 1965-On (low)	2.60"	ED4483
Chevrolet 396-502 V8 '65-On (tall)	3.80"	ED4683
Chrysler 318-340-360 V8 1965-91	3.20"	ED4473
Chrysler 361-440 V8 1958-79.	3.60"	ED4493
Ford 260-351 Windsor V8	3.70"	ED4603
Ford FE 332-428 V8 1958-76	3.90"	ED4623
Pontiac 301-455 V8 1962-79 (no baffle)	3.00"	ED4453

CHROME OIL FILL CAP

Designed to plug the oil fill hole on any of Edelbrock's Signature Series valve covers or any 1-1/4" diameter fill hole on similar designs.

Chrome Oil Fill Cap

ED4415



BILLET ALUMINUM VALVE COVER BREATHERS

These push-in style valve cover breathers contain a foam filter element which allows the engine to properly breathe and traps oil vapor and prevents engine compartment contamination. Available polished or with a black powder coat finish to match Edelbrock valve covers. Fits any 1-1/4" diameter valve cover hole.

Billet Aluminum Breather with polished finish

ED4213

Billet Aluminum Breather with black powder coat finish

ED42133



**VALVE COVER BREATHERS
SIGNATURE SERIES**

Our push-on style valve cover breather contain an effective filter which traps oil vapor and prevents engine compartment contamination. Screen printed breather comes with rubber grommets and match our new valve covers and air cleaner. Fits any 1-1/4" diameter valve cover hole.

- ED4403** Signature Series Round Breather with black powder coat finish
- ED4413** Signature Series Round Breather with black powder coat finish Breather with 90deg nipple

**ELITE II SERIES VALVE COVERS**

Introducing the next generation of Elite Series accessories... Elite II. This new line of accessories features a design that is influenced by the original Elite Series originally released in 1985, but with a new modern take on this classic look. They're made from heavy-gauge, die-cast aluminum and are finished off with a show quality high luster polished finish. The raised fins are accented by a contrast gloss black finish between the fins for the definitive Elite Series look.

Our tall profile valve covers are 2" taller than stock, and clear most roller rockers and valve train components. Our low profile valve covers clear all air-conditioning, alternator brackets and aluminium rockers. Overall height is measured from gasket flange to top at the highest point. Elite II Series Valve Covers are available in Polished Finish ONLY!

Description	Height	Part No.
CHEV		
Chevy 262-400 V8 1959-86, Low Profile (B)	2.93"	ED4262
Chevy 262-400 V8 1959-86, Tall Profile (A,B)	4.40"	ED4263
Chevy Big-Block V8 1965 & Later	3.00"	ED4275
CHRYSLER		
Chrysler Big-Block 383/440	3.62"	ED4276
FORD		
Ford 289/302/351W (except Boss) Tall Profile (A,C)	3.70"	ED4264
Ford FE 1958-1976	3.55"	ED4277

- (A) Some tall profile valve covers will interfere with A/C compressors, EGR valves and power brake boosters.
- (B) Will not fit '86 & later Vette aluminium heads or 1987 & later Chevy cast iron heads. See centerbolt valve covers.
- (C) Will not fit '86 & 5.0L engines with stock or Edelbrock #3821, #7123 or #7126 EFI Manifolds.

**Elite Series Breathers**

Elite Series breathers are die-cast aluminum with a foam element. 3 styles are available: #4201 & #4211 bolt to the side, #4202 and #4212 bolt in the oil fill hole and #4204 and #4214 simply push into the oil fill hole. Breathers #4202 and #4212 will not fit Elite Series valve covers #4246, #4247 or #4248.

Polished w/Name	Polished w/No Name
Bolt-on style, side-mounting	ED4201
Bolt-on style, top-mounting (4" tall)	ED4202
Push-in style, top-mounting (2-1/2" tall)	ED4204*
Push-in style, top-mounting (2-1/2" tall) EnduraShine Finish	ED42044

Valve Cover Breathers

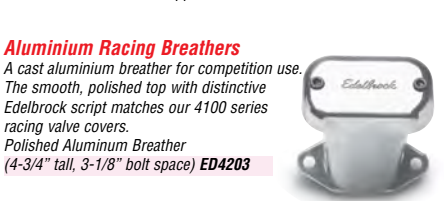
Our push-on style valve cover breathers contain an effective filter which traps oil vapor and prevents engine compartment contamination. Inscribed breathers come with rubber grommets and match our chrome valve covers. Fits any 1-1/4" diameter valve cover hole.

Round Breather **ED4405**

Square Breather without nipple **ED4408**

Square Breather with 45° nipple **ED4409**

Round Breather with 90° nipple **ED4410**

**Aluminium Racing Breathers**

A cast aluminium breather for competition use. The smooth, polished top with distinctive Edelbrock script matches our 4100 series racing valve covers.

Polished Aluminium Breather (4-3/4" tall, 3-1/8" bolt space) **ED4203**

**CLASSIC SERIES VALVE COVERS
WITH POLISHED FINISH**

Edelbrock first made these aluminium valve covers in the late '50s and they're still a classic. Made of heavy-gauge, sand-cast aluminum, they have enough height to clear roller rockers. Breathers #4201 or #4211 can be added, if desired. The figure in parentheses is the height of the cover from base to top at the highest point. Polished finish.

1959-86 Chevy 262-400 (3-1/2")	ED4145
1959-86 Chevy 262-400 (3-1/2") with oil fill hole	ED4144
1965 & later Big Block Chevy	ED4185
1960-95 Ford 260-351-W (3-3/4")	ED4160
1958-1976 Ford FE	ED4162
S/B Chrysler LA	ED4176
S/B Chrysler Magnum	ED4177
B/B Chrysler 383/440	ED4192

WITH BLACK POWDER COATED FINISH

Made of heavy-gauge sand-cast aluminum, our classic finned valve covers are now available with a durable black powder coated finish and polished fins and logo.

Chevrolet 348/409	ED41403
Small-block Chevy	ED41453
Small-block Chevy with Breather Hole and Oil Fill Cap	ED41443
Covers for Big-block Chevy	ED41853
Small-block Ford (221-351W)	ED41603
Ford FE	ED41623
Pontiac	ED41303
S/B Chrysler LA	ED41763
S/B Chrysler Magnum	ED41773
B/B Chrysler 383/440	ED41923

**CLASSIC SERIES 409 CHEVY VALVE COVERS
WITH POLISHED OR BLACK FINISH**

We've added the 348/409 W-series Chevy engine to our list of applications for our popular line of classic aluminum valve covers. Of course they're made of heavy-gauge, sand-cast aluminum with enough height to clear roller rockers.

Classic Series Valve Covers for 348/409 W-series Chevy, Polished	ED4140
Classic Series Valve Covers for 348/409 W-series Chevy, Black	ED41403

**OIL FILL TUBE AND BREATHER**

Oil Fill Tube and matching push-in Breather is an original style for vintage manifolds with a 1-1/4" oil breather hole. Included with manifolds ED2703, ED5408, ED5409, ED7158 and ED7159. Will also fit ED5419 and ED5425 Chevy intakes.

Chrome GM style Oil Fill Tube with Breather **ED4803**

Circle Track Breathers

Chromed and stamped with the Edelbrock name, these breathers are designed for high-rpm, highperformance applications. The oiled-cotton, gauze and screen element has very low restriction which is ideal for competition. Washable breather is available in a push-on or clamp-on style. Kits available with two clamp-on breathers, two tubes and two clamps or one of each item.

- Push-on style **ED4420**
- Clamp-on style (tube diameter 1-3/8") **ED4421**

**Hold-Down Tabs**

Universal valve cover hold-down kits may be used on all Edelbrock and similar design chrome valve covers. #4401 also works with our Elite Series low profile S/B Chevy valve covers and #4402 works with Elite Series tall profile S/B Chevy covers. All hold-down kits have 4 items per pack, except #4414.

1-piece race wing bolts (universal, 5" long)	ED4402
Hold-down tab kit (small-block Chevy, 4 pieces)	ED4404

**Signature Series Valve Covers**

Engineered for function and styled for good looks, triple chrome-plated Signature Series valve covers have stock-style breather baffles that prevent oil passage to the PCV valve. These quality valve covers accept all emissions equipment, including PCV valve. Rubber grommets for the breather and PCV valve holes included. Matching breathers sold separately.

NOTE: Tall Profile are 1-1/4" taller than stock, and clear most roller rockers and valvetrain components. Low Profile valve covers clear air-conditioning and alternator brackets. Tall profile valve covers will not clear stud girdles. Signature Series valve covers clear most aluminum rocker arms and moderate lift cams. Check clearance prior to purchase.

Overall Height	
AMC 290-304-343-360-390-401 V8 '67-91 (no baffle) 3.0"	ED4431
Chevrolet 262-400 '59-86 (low)	2.8" ED4449
Chevrolet 262-400 '59-86 (tall)	3.7" ED4649
Chevrolet 396-454 V8 '65 & later (low)	2.6" ED4480
Chevrolet 396-454 V8 '65 & later (tall)	3.8" ED4680
Chrysler 318-340-360 V8 '65-91	3.2" ED4495
Chrysler 361-383-400-413-426-440 V8 '58-79	3.6" ED4491
Ford 260-289-302 (not Boss) and 351-V8 V8	3.7" ED4460
Ford 352-360-390-406-410-427-428 V8 '58-76	3.9" ED4462
Ford 351M-400 and 351-C V8	2.9" ED4461
Ford 429/460 V8	3.6" ED4463
Oldsmobile 350-455 V8 (fits 5- and 10-hole heads) 2.9"	ED4485
Pontiac 301-326-350-389-400-421-455 V8 - '62-79 (no baffle) 3.0"	ED4456

**Edelbrock Coil-Covers for GM LS1 Engines**

Edelbrock's LS Series Coil Covers are a great way to dress up the LS1 in your Corvette, F-Body, street rod or muscle car. Their exclusive design is manufactured of cast aluminum and eliminates the stock mounting bracket by mounting the coils directly to the underside of cover, providing a clean, custom look. These Coil Covers are a center bolt style design and will fit 1999 and later LS1/LS6 centerbolt valve covers with GM coils #12558948 or aftermarket replacement equivalent.

Coil-Covers as-cast aluminum	ED4118
Coil-Covers Polished finish	ED41181
Coil-Covers Black powder coated with contrast machined logo and fins	ED41183

**EDELBRICK CAST ALUMINUM CLEVELAND VALVE COVERS**

Designed especially for the Glidden Victor SC-1 cylinder head, this heavy-duty sand cast aluminium valve cover will fit Edelbrock and factory Cleveland heads as well as aftermarket heads that use the Cleveland bolt pattern. Clearance has been designed in for the Edelbrock Victor SC-1 Pro-Port Raw head ED770769 when using the Jesel rocker arm set-up. No breather holes to allow for custom plumbing of crankcase ventilation system.

Aluminium Valve Covers for Ford Cleveland **ED4267**

**ATOMIC LS SERIES COIL COVERS**

If you desire a clean and customized look to your engine compartment, our new Atomic LS coil covers are designed to fit over the valve covers and coil assemblies to effectively hide the coil packs and wiring. The cast aluminum covers align with the Atomic Smart Fuel Rail assemblies and provide a completely smooth contoured finish to the edge of the valve cover. The Atomic Coil Covers will work with OEM coils as well as MSD's Multiple Sparking Coils.

Description	Part No
Atomic LS Coil Covers-LS2/3/7 Red	MSD2970
Atomic LS Coil Covers-LS1/6 Red	MSD29701
Atomic LS Coil Covers-LS2/3/7 Black	MSD2971
Atomic LS Coil Covers-LS1/6 Black	MSD29711





FABRICATED ROCKER COVERS

Aeroflow's Fabricated Rocker Covers are made completely from exceptional quality aluminium and are lightweight. They have a one-piece billet rail CNC machined from 6061-T6 aluminium to guarantee a precision flat surface for superior sealing. They come in either polished or black anodised finished. The covers come standard with a female -8 ORB (some are available with -12) for breather applications and a threaded o-ringed billet oil filler cap. All covers are tall enough to clear 99% of rocker combinations.



To Suit Small Block Chevy

AF77-5000	Polished	SBC Chevy early -8 breather ports
AF77-5000BLK	Black	SBC Chevy early -8 breather ports
AF77-5000-12	Polished	SBC Chevy early -12 breather ports
AF77-5000BLK-12	Black	SBC Chevy early -12 breather ports



To Suit Chevy LS Series (no coil mounts)

AF77-5003	Polished
AF77-5003BLK	Black



To Suit Ford 302 / 351 CLEVELAND

AF77-5001	Polished	8 breather ports
AF77-5001BLK	Black	-8 breather ports
AF77-5001-12	Polished	-12 breather ports
AF77-5001BLK-12	Black	-12 breather ports



To Suit Ford 289 / 351 Windsor

AF77-5002	Polished
AF77-5002BLK	Black



To Suit Holden V8 early

AF77-5004	Polished
AF77-5004BLK	Black



To Suit Holden V8 VN-VT

AF77-5005	Polished
AF77-5005BLK	Black



Replacement oil filler cap

AF59-5000	Polished
AF59-5000BLK	Black



Breather Adapters

Fabricated covers have an ORB port in the end of the covers for adapting breather hoses to catch cans. To run a filter in the top of the covers in a traditional style you can simply remove the filler cap and screw in a Aeroflow breather adapter. This will allow you to either use a push on or screw on breather.

ORB TO AN

SCREW ON

-16 to -10	AF920-10-16BLK	AF920-10-16S
-16 to -12	AF920-12-16BLK	AF920-12-16S
PUSH ON		
-16 to 34.92mm (1-3/8")	AF926-22-16BLK	AF926-22-16S



AF1859-1000 AF1859-1001

Valve Cover Grommet 1pc Suit Steel Covers

AF1859-1000	25.4mm (1") ID to suit 31.75mm (1-1/4") hole
AF1859-1001	19.05mm (3/4") ID to suit 31.75mm (1-1/4") hole

STAMPED STEEL ROCKER COVERS

Designed for function and fashioned for great looks, Aeroflow's Stamped Valve Covers have stock-style breather baffles that prevent oil passage to the PVC valve. Available in two great finishes; chrome plated and black electrolysis. Available with and without logo. Also comes with one 10.05mm (3/4") ID and one 25.4mm (1") ID rubber grommets.

NOTE: Aeroflow breathers see page 95, 96 & 97

With Stamped Aeroflow Logo



To Suit Small Block Chevy Early

AF1821-5000	Chrome
AF1822-5000	Black



To Suit Ford 302 / 351 Cleveland

AF1821-5001	Chrome
AF1822-5001	Black



To Suit Ford 289 / 351 Windsor

AF1821-5002	Chrome
AF1822-5002	Black



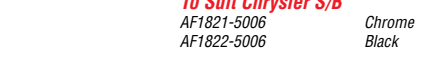
To Suit Holden (GM Australia) V8 early

AF1821-5004	Chrome
AF1822-5004	Black



To Suit Chrysler S/B

AF1821-5006	Chrome
AF1822-5006	Black



Plain (No Logo)



To Suit Small Block Chevy Early

AF1821-5050	Chrome
AF1822-5050	Black



To Suit Ford 302 / 351 Cleveland

AF1821-5051	Chrome
AF1822-5051	Black



To Suit Ford 289 / 351 Windsor

AF1821-5052	Chrome
AF1822-5052	Black



To Suit Holden (GM Australia) V8 early

AF1821-5054	Chrome
AF1822-5054	Black



To Suit Chrysler S/B

AF1821-5056	Chrome
AF1822-5056	Black



Suits standard
GM coils ONLY

BILLET LS SERIES RETRO COVERS

These Aeroflow billet valve covers are machined from a solid block of 6061-T6 aluminium and then hand polished for an amazing finish. They feature super flat gasket rails that ensure no leaks and offer a superior seal for supreme vacuum retention. These covers fit only LS2 & LS3, LS7 OEM style coils. Included in the covers is a female -6 ORB for custom plumbing options. Make a statement at your next car show with these awesome covers!

Part No	Colour	Description
AF64-4110	Polished	LS Series billet rocker covers
AF64-4110S	Silver	LS Series billet rocker covers
AF64-4110BLK	Black	LS Series billet rocker covers



LS CAST ALUMINIUM VALVE COVERS WITH COIL MOUNTING

Holley's cast aluminium valve covers for GM LS engines provide a fresh, refined look without the need to relocate the coils. There's no question the factory "coil on cover" design give the LS that signature high-tech look, but the factory brackets and coil location leave room for improvement. Clean up that signature look with Holley's LS Valve Covers! They incorporate a radiused shape, angled coil mounting, and a billet fill cap. Plus, the coils mount directly to the cover with no need for a bracket in-between. They fit most popular LS series engines and come in Black Crinkle, Satin, Natural Cast, and Polished. Or, paint to match your vehicle's theme!

- Angled coil mounts deliver a smooth clean look
- Retain the high-tech look and performance of "coil on cover"
- Eliminates unsightly OE style coil brackets
- Four finishes available (Natural Cast, Satin, Black Crinkle & Polished)
- Billet aluminium oil fill cap
- Reuses original gaskets and bolts
- Fits all LS engines using LS3 or similar coils with 72mm bolt spacing
- Clearance for .750" lift cam with stock style rocker arms
- Holley's LS covers utilize proven OE style baffles and vents.

Description	Part No
LS Cast Aluminium Covers With Coil Mounting – Polished	H0241-90
LS Cast Aluminium Covers With Coil Mounting – Black Crinkle	H0241-91



KC Holden Alloy Rocker Covers

Suitable for use with Roller Rockers

Holden/Commodore 6Cyl. 1964-85 Black	KC210B
Holden/Commodore 6Cyl. 1964-85 Polished	KC210P
Holden 6 Cylinder Side Plates Polished	KC171P
Holden 6 Cylinder Side Plates Black	KC171B
Holden/Commodore V8 253/308 1969-89 Black	KC208B
Holden/Commodore V8 253/308 1969-89 Polished	KC208P
Holden/Commodore V8 Non Vented 1969-89 Black	KC209B
Holden/Commodore V8 Non Vented 1969-89 Polished	KC209P
Holden VN V6 Polished	KC166P
Holden VP-VY V6 (Inc Ecotec) Natural Finish	KC168N
Holden VP-VY V6 (Inc Ecotec) Black Finish	KC168B
Holden VP - VS V6 Tall valve covers Polished	KC169P
Holden Cork Gaskets Suit KC166 & 169 Covers	KCGK166
Holden V8 VN-ON 5L Vented Polished	KC50GP
Holden V8 VN-ON 5L NON Vented Polished	KC50POP
Holden V8 VN-on Black w/booster cut away	KC50GB
Holden V8 VN-on Natural Finish w/booster cut away	KC50GN
Holden V8 VN-on Black w/no booster cut away	KC50PB



Dress-Up Kits

PR141-001 Kit with Timing Cover
For Chevrolet® Small-Block V8, 1958-86. Includes two short baffled Bow Tie™ valve covers, plus Bow Tie timing chain cover with GM production oil seal installed, two black/red Bow Tie 4-wire looms, one Bow Tie push-in air breather, oil dipstick, timing tab for 8" Balancer, and two grommets (air breather cap and PCV)

Street Performance Chrome Kit

Latest Look! For Chevrolet small-block, V8, 1958-86. This complete kit includes chrome air breather, plus two tall baffled valve covers, timing chain cover, 14-inch air cleaner, 8 wing nuts and 8 hold-downs bearing the popular Chevrolet and Bowtie Emblems in red/black.

PR141-900 Full Kit.

KIT INCLUDES:

- PR141-616** Chevy Bowtie push-in air breather cap
- PR141-902** Chevy Bowtie wing nuts, black & red Emblems
- PR141-903** Chevy Bowtie hold downs, black & red Emblems
- PR141-904** Chevy Bowtie timing chain cover, black & red Emblems
- PR141-905** Chevy Bowtie valve covers, tall, black & red Emblems
- PR141-906** Chevy Bowtie 14-inch air cleaner, black & red Emblems



VORTEC SLANT-EDGE VALVE COVERS

The center bolt family of valve covers now can enjoy the wildly popular Slant-Edge look that Gen 1 and LS enthusiasts have been enjoying. Generous internal clearance and raised/recessed emblems are the distinctive features of this new tall valve cover. Initially, seven choices will be released with raised or recessed Chevrolet and Bowtie Emblems, or no emblems at all for a completely customized look. Tall, with removable baffle. Grommets, and mounting bolts included. Sold in pairs.

PR141-840	Black Crinkle, Raised Emblem
PR141-841	Chevy Orange Crinkle, Raised Emblem
PR141-842	Cast Grey Crinkle, Raised Emblem
PR141-843	Polished, Recessed Red/Black Emblem
PR141-844	Chrome, Recessed Red/Black Emblem
PR141-845	Black Crinkle, Recessed Red Emblem
PR141-846	Polished, No Emblem



LSX SLANT EDGE ALUMINIUM VALVE COVERS

PR141-257 Chevy Orange Raised LSX Valve Covers



LS SLANT EDGE ALUMINIUM VALVE COVERS

Through innovative engineering, PROFORM has developed a valve cover that will take your generic looking stock LS engine, and give it a totally personalized look. These new valve covers are taller than stock valve covers, and can accommodate a wide variety of large valve train applications. These valve covers are available in 5 different styles, which include raised and recessed emblems. Unique mounting studs, and oil restricting baffles are included. Threaded mounting holes for Integrated Ignition Coil Bracket included. Sold in pairs.

With raised Chevrolet emblem.

PR141-261	Chevy Orange LS Valve Covers
PR141-262	Chevy Black Crinkle LS Valve Covers
PR141-263	Chevy Cast Grey LS Valve Covers
PR141-264	Chevy Polished LS Valve Covers
PR141-265	Chevy Chrome LS Valve Covers

LS Series Valve Cover Spacers

This cast aluminium valve cover spacer kit for LS1 and L98 engines raises the valve covers by 25mm for extra clearance when using roller rockers and high lift cams. Includes fasteners and coil offset bracket. Note: requires longer ignition leads.

YT5123 LS Series Valve Cover Spacer Kit

LS Series Extra Thick Valve Cover Seals

Extra thick rubber valve cover gaskets for LS1 style engines to raise the valve covers by 8mm for extra clearance when using roller rockers and high lift cams. Sold in pairs.

YT5132 LS Series Extra Thick Valve Cover Seals



Center hold-down. Tall.

Supplied with mounting bolts, stainless steel & rubber washers (also available separately below as PR141-133). All valve covers sold in pairs.

For Chevy small-block V8, 1987 - later.

PR141-130	Polished
PR141-131	Black Crinkle
PR141-132	Chrome Plated
Bolt & Washer Kit	
PR141-133	Bolt & Washer Kit (8)

"CHEVROLET & BOWTIE EMBLEM" Die-Cast Valve Covers with Slant-Edge



Recessed Emblem

Part No.	Description
PR141-923	Chevy S/B V8, 1958-1986, Metallic Gray.
PR141-927	Chevy S/B V8, 1958-1986, Polished.
PR141-928	Chevy S/B V8, 1958-1986, Black Crinkle.
PR141-930	Chevy S/B V8, 1958-1986, Chrome.



Raised Emblem

PR141-921	Chevy S/B V8, 1958-1986, Black Crinkle.
PR141-924	Chevy S/B V8, 1958-1986, Chevy® Orange.
PR141-925	Chevy S/B V8, 1958-1986, Metallic Gray.



Raised Emblem from Blockout

PR141-920	Chevy S/B V8, 1958-1986, Polished.
PR141-922	Chevy S/B V8, 1958-1986, Chrome.



PLAIN

PR141-926	S/B V8, 1958-1986, No Emblem, Polished.
------------------	---



Standard Style Rocker Covers with Bowtie Logo

Aluminium Small Block Chevy Valve Covers. Black with raised Logo.

RPCR6336	Tall
RPCR6334	Short



SUPER-LIGHT, FABRICATED ALLOY VALVE COVERS

These precision welded fabricated aluminum valve covers are offered in two designs: For racing with no holes, and for street (where permitted) with the traditional 1.22" hole and GM designed baffle. Fits all small-block Chevrolet engines from 1958 through 1986 with flange mounting bolt holes. Two covers per box. They have recessed Bow Tie and CHEVROLET emblems, inlaid with classic Chevrolet red, billet mounting rails for maximum leak resistance, and weigh approximately 3 lbs (45%) less than stamped steel die-cast pairs!

PR141-800	SB CHEV Clear anodized, no baffle
PR141-802	SB CHEV Black, no baffle
PR141-801	SB Chev Clear anodized, no baffle.
PR141-805	BB CHEV Clear anodized, no baffle



Die Cast Valve Covers

These premium valve covers are die-cast aluminum, manufactured to GM specifications, equipped with internal oil drippers (small-block only) and GM-designed baffles. They have recessed Bow Tie and CHEVROLET emblems, inlaid with classic Chevrolet red. All valve covers sold in pairs.

For Chevy® small-block V8, 1958-86.

PR141-108	Polished
PR141-116	Black Crinkle
PR141-117	Chrome Plated
For Chevy big-block, 1965 - later, tall.	
PR141-142	Polished
PR141-141	Black Crinkle
PR141-140.	Chrome



Proform Stamped Valve Covers

These CHEVROLET Bow Tie valve covers are made of heavy gauge steel, 20% thicker than typical aftermarket valve covers. Stamped valve covers are offered in either tall or short. Oil restricting baffles are offered in many valve covers for those who wish to maintain the PCV hookup. All valve covers are sold in pairs, equipped with air breather and PCV grommets. Technical Note: Production height Chevy small-block valve covers and valve covers with baffles will not clear most stud girdle applications.



For Chevy small-block V8, 1958-86.

PR141-102	Short, with baffle, Chrome
PR141-103	Tall, with baffle, Chrome
PR141-101	Tall, no baffle, Chrome
PR141-750	Short, with baffle, Black Crinkle with Red Emblem
PR141-751	Tall, with baffle, Black Crinkle with Red Emblem

For Chevy small-block V8, 1987 - later.

PR141-107	Short, Centre Bolt with baffle, Chrome
PR141-905	Tall, with baffle, Chrome, With Red & Black Emblem.
PR141-907	Short, Centre Bolt with baffle, Black Crinkle
PR141-908	Short, Centre Bolt with baffle, Metallic Grey

For Chevy big-block, 1965 - later.

PR141-114	Short, with baffle, Chrome
PR141-115	Tall, with baffle, Chrome
PR141-810	Short, with baffle, Black Crinkle with Red Emblem
PR141-811	Tall, with baffle, Black Crinkle with Red Emblem
PR141-812	Short, with baffle, Chrome with Black & Red Emblem
PR141-813	Tall, with baffle, Chrome with Black & Red Emblem
PR141-814	Short, with baffle, Grey with Blue & Red Emblem
PR141-815	Tall, with baffle, Grey with Blue & Red Emblem

2-Piece Cast Aluminium Valve Covers

Now you can easily check your valve train while the engine is running.

The diagonal cut of the top section ensures no mess. Each valve cover features oversize bolts for fast removal, a top and bottom section, and a retained gasket for a tight seal. Tall style, will clear roller rockers and stud girdles and available in six choices. Comes with required Allen wrench. All valve covers come equipped with baffle and grommets. Technical Note: Will not fit cylinder heads with three rectangular raised internal sections near the valve cover mounting surface, unless such sections are milled off.

For Chevy small-block V8, 1958-86.

PR141-910	Polished with Recessed Black & Red Emblem
PR141-911	Black Crinkle with Recessed Red Emblem
PR141-912	Chrome with Recessed Black & Red Emblem
PR141-913	Polished with Raised Emblem
PR141-914	Black Crinkle with Raised Emblem
PR141-915	Polished with no Emblem
PR141-916	Replacement Gasket Set



Ford Racing WINDSOR Valve Covers

Die cast aluminum valve covers in Ford Racing Ford Cobra and Ford Mustang styles. These premium tall valve covers are designed to clear roller rockers and polylock nuts. They have recessed emblems with inlaid paint. All valve covers include baffles and grommets and are sold in pairs. Note: Not for use on engines with EFI manifolds.

For Ford 289-302-351 Windsor Engines

PR302-001	Ford Racing - Polished
PR302-002	Ford Racing - Chrome
PR302-003	Ford Racing - Black Crinkle
PR302-055	Ford Cobra - Polished
PR302-056	Ford Cobra - Black Crinkle
PR302-030	Ford Mustang - Polished
PR302-031	Ford Mustang - Black Crinkle

FORD RACING CLEVELAND VALVE COVERS

- Fits Ford 302-351 Cleveland
- Die-Cast aluminium with baffle
- Polished or Black finish
- "Ford Racing" logo
- Will clear stud girdle and roller rocker arms (4" tall)
- Includes oil fill cap and grommets

Polished Aluminium	FMM-6582-2351
Black Aluminium	FMM-6582-2351B

ROCKER COVER BOLTS

T10 SUIT FORD

Chrome bolt kit to suits 302-351 Cleveland Ford Motorsport Covers (Cap Screw)



FORD MUSTANG

PR302-140 - Ford MUSTANG, Black Crinkle, Raised emblem.



Ford Slant Edge Aluminium Valve Covers

Fits 289-302-351W Engines. The time has come to update your Ford valve covers! These premium valve covers are "Tall", and designed to clear roller rockers and polylock nuts. They have raised and milled emblems. All valve covers include baffles, grommets, and a pair of unique bolts. Sold in pairs.

FORD RACING

PR302-135 - Ford RACING, Black Crinkle, Raised Emblem.
PR302-136 - Ford RACING, Ford Blue, Raised Emblem.
PR302-137 - Ford RACING, Cast Gray, Raised Emblem.
PR302-138 - Ford RACING, Polished, Recessed Black Emblem.
PR302-139 - Ford RACING, Chrome, Recessed Black Emblem.

Ford Fabricated Valve Covers

These precision-welded fabricated aluminium valve covers offer a head-turning look to your Ford engine. They have recessed emblems with inlaid paint, and billet aluminium mounting rails for maximum leak resistance. All valve covers include baffles and grommets and are sold in pairs.

Note: Not for use on engines with EFI manifolds.

For Ford 289-302-351 Windsor Engines

PR302-130	Ford Racing - Brushed Silver
PR302-131	Ford Racing - Polished Aluminium

Ford Stamped Steel Valve Covers

These premium stamped steel valve covers are offered in a deep chrome plated look or a distinctively bold black crinkle look and feature Ford Racing, Ford Cobra and Ford Mustang emblems. All valve covers include baffles and grommets and are sold in pairs.

For Ford 289-302-351 Windsor Engines

PR302-070	Ford Racing, Embossed Emblem - Chrome
PR302-071	Ford Racing, Black Emblem - Chrome
PR302-072	Ford Racing, Red Emblem - Black Crinkle
PR302-116	Ford Cobra, Black Emblem - Chrome
PR302-117	Ford Cobra, Red Emblem - Black Crinkle
PR302-100	Ford Mustang, Black Emblem - Chrome
PR302-101	Ford Mustang, Red Emblem - Black Crinkle

Ford Engine

Dress-Up Kits

Give your Ford Engine a complete makeover with our Ford Racing dress-up kits. Available in three different styles, perfect for customizing your engine and giving it that complete look.

Deluxe Kits with Recessed Emblems and Inlaid Paint.

For Ford 289-302-351W engines. Includes: valve covers, air cleaner, breather cap and valve cover mini nuts.

PR302-500	Black Crinkle, Red Emblems
PR302-510	Chrome, Black Emblems



Traditional Kit with

Embossed Emblems

For Ford 289-302-351W engines. Includes: valve covers, air cleaner, breather cap, valve cover mini nuts, plug wire looms and dipstick.

PR302-515
Chrome, Embossed emblems



Oil Filler Cap

Screw-in oil filler cap prominently displays the Ford oval. This is a direct replacement part.

PR302-230 Chrome Oil Filler Cap

Ford Air Breather Caps

The top of each air breather cap is embossed handsomely with Ford Racing, Cobra, or Mustang emblems. The perfect complement to your valve covers.

PR302-200	Ford Racing, Twist On - Chrome
PR302-215	Ford Racing, Push In - Chrome
PR302-216	Ford Racing, Push In - Black Crinkle
PR302-220	Ford Mustang, Push In - Chrome
PR302-221	Ford Mustang, Push In - Black Crinkle
PR302-225	Ford Cobra, Push In - Chrome
PR302-226	Ford Cobra, Push In - Black Crinkle



Ford Valve Cover Wing Nuts

The Ford oval is cut sharply into the top of each wing nut. The lower ends of the shafts are manufactured with wide shoulders for broad load distribution. All nuts are supplied with a separate stud which permits precise gasket positioning on the head prior to mounting the valve covers. 1/4-20 threads. Does not fit FE engines. 4 per package.

PR302-325	Wing Nuts, Chrome
PR302-326	Wing Nuts, Black Crinkle



Ford Valve Cover Mini Nuts

High quality steel mini nuts with the Ford oval cut sharply into the top. Supplied with a separate stud which permits precise gasket positioning on the head prior to mounting the valve covers. 1/4-20 threads. Does not fit FE engines. 4 per package.

PR302-315	Mini Nuts, Chrome
PR302-316	Mini Nuts, Black Crinkle



Ford Fuel Pump Block-Off Plate

Finish your engine off properly with a chrome block-off plate that prominently features the Ford Oval stamped in. This plate is supplied with special non-asbestos gaskets.

PR302-290 Ford Windsor Chrome Block Off Plate



Ford Chrome Dipstick

These chrome dipsticks feature either a plain chrome handle or a blue anodized aluminium handle that is knurled and has the Ford Oval embossed and silver script printed prominently on the top. Fits 289-302-351W engines 1962-1978 only.

Chrome w/ Blue Anodized Aluminium Handle	PR302-400
Chrome w/ Plain Chrome Handle	PR302-401



FORD RACING LASER ETCHED WINDSOR V/COVERS

- Fits 289/302/351W
- Die-cast aluminium with baffle
- Black satin finish
- Laser etched "Ford Racing" logo
- Will clear stud girdle and roller rocker arms (3.75" tall)
- Oil fill cap and grommets

FMM-6582-LE302BK - Laser Etched Ford Racing Black V/Covers Windsor

FMM-6582-LE302BL - Laser Etched Ford Racing Blue V/Covers Windsor

FMM-6582-LE302C - Laser Etched Ford Racing Chrome V/Covers Windsor

MOROSO



CHROME PLATED STEEL Tail Design

- Includes two breather/filler cap grommets and one baffled and one non-baffled PCV grommet

- MO68112** Big Block Chev, Tall Design, Stamped Steel Valve Covers, Chrome Plated, without Baffles.
- MO68161** Small Block Chrysler. Stamped Steel Valve Covers. Includes two breather filler cap grommets only.
- MO68181** Big Block Chrysler. Stamped Steel Valve Covers, Chrome Plated, Tall Design. Fits 361, 383, 400, 413, 426 wedge and 440, with Baffles.
- MO68202** Ford 221-302 & 351W, Stamped Steel Valve Covers, Chrome Plated, Tall Design, without Baffles.



DIE-CAST ALUMINIUM Tall Design

- Packaged two to a set with rubber breather grommets and eight 1-3/4" long studs.
- Includes two breather/filler cap grommets and one baffled and one non-baffled PCV grommet.

- MO68401** Small Block Chev Die-Cast Aluminium Valve Covers, polished finish with Moroso logo.
- MO68411** Die-Cast Aluminium Valve Covers, black epoxy finish with Moroso logo, SBC, Tall Design.



DIE-CAST ALUMINIUM Centre Bolt

- Polished die-cast aluminium centre bolt valve covers for 1987 and later SBC engines with centre bolt-style heads.
- Supplied with no breather holes so you can drill your own for street rods and other custom applications.
- Stock height clears factory accessory brackets and most roller rockers.
- Includes hardware, 8 stainless steel button head fasteners and nylon washers.

- MO68030** Polished Aluminium Centre Bolt Valve Covers No breather holes for custom applications.



FORD 302-351 CLEVELAND

FABRICATED ALUMINIUM VALVE COVERS

- Fabricated entirely from superior quality aluminium, ultra- lightweight
- One piece billet rail is CNC machined to ensure a precision flat surface for superior sealing
- Airtight sealing allows the engine to pull greater vacuum for improved ring seal and power
- Mating of the billet rail to the valve cover is done with a smooth transition, eliminating trapped oil and spills when removing the cover
- Notched at each mounting location with socket-sized clearances for quick removal and installation
- Tall enough to clear most popular rocker combinations



FABRICATED ALUMINIUM Sprint Car Style

- Fabricated entirely from superior quality aluminium
- One-piece billet rail is CNC machined from 6061-T6 aluminium to ensure a precision flat surface for superior sealing
- Tall enough to clear most popular rocker combinations
- Air-tight sealing allows the engine to pull greater vacuum for improved ring seal and power
- CNC manufactured and TIG welded to prevent distortion and ensure a perfect fit
- Clears roll cage tubing, allowing engine to be pulled without removing valve covers

- MO68338** Chev Small Block including 18" heads. 3" tall.



FABRICATED ALUMINIUM Billet Rail, Tall Design

- Fabricated entirely from superior quality aluminium, ultra lightweight
- One-piece billet rail is CNC machined to ensure a precision flat surface for superior sealing
- Tall enough to clear all popular rocker combinations
- Air-tight sealing allows the engine to pull greater vacuum for improved ring seal and power
- TIG welded and CNC manufactured to eliminate distortion and ensure a precise fit
- Notched at each mounting location with socket-sized clearances for quick installation and removal

- MO68326** Chev Small Block including 18" heads.
- MO68345** Chev Big Block. 3" tall.
- MO68459** Chev Big Block. 3.875" tall.
- MO68352** Chev LS1 with coil mounting bosses. 2.5" tall
- MO68354** Chev LS1 without coil mounting bosses. 2.5" tall
- MO68316** Chrysler Small Block. Breather on one side. 3.75" tall
- MO68325** Ford 289-302-351 Windsor engines. 3.875" tall.
- MO68348** Ford 429-460 Big Block. 2.5" tall.



MOON HEMI Alloy Valve Covers

Available cast or polished. The ultimate for hot rod Hemi's

- MNMP656** Cast Finish
- MNMP656P** Polished Finish
- MNMPPT392** Hemi Spark Plug Tubes & Seals Suit 354 & 392 Covers. Set of 8



MOON Finned Valley Covers

Available cast to match the No Name valve covers. Breather can be added on request at extra cost. (special order) Gasket & Bolt sets also available call for more information.

- MNMPVC30** Oldsmobile
- MNMPVC31** Ford & Mercury Y Block 1957
- MNMPVC32** Hemi 51 - 58
- MNMPVC33** Cadillac
- MNMPVC34** Buick Nail Head



MOON Breathers

Highly polished cast aluminium

- MNMP1700** Hi Rise Breather
- MNMP1700LB** Low Boy Breather
- MNMP1800** Right Angled Breather
- MNMP1800LB** Low Boy Right Angled Breather

OIL BREATHER COVER FINNED

- MN AA21410S** Small 2.38"
- MNAA21410** Large 3.25"



Some Moon Valve Cover options are special order only.

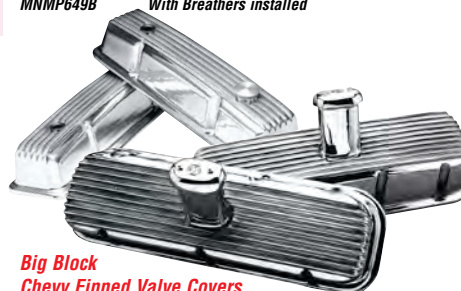
MOON No-NAME VALVE COVERS

Small Block Chevy Valve Covers for 84 & up

Comes with studs, nuts, gaskets, standard valve covers are machined for 2 x 1-1/4" breathers and comes with filler cap.



- MNMP659**
- S/B Chevy** No Holes 57-84 Available with breathers installed.
- MNMP649** Plain No Holes No Breathers
- MNMP649B** With Breathers installed



Big Block Chevy Finned Valve Covers

- Available with breathers installed.
- MNMP657** Plain No Holes No Breathers
- MNMP657B** With Breathers installed

348-409 Chevy Finned Valve Covers

- MNMP650** Polished Finned



BIG BLOCK FORD Finned Valve Covers

- 332 to 428 BB Fords
- MNMP651**



SMALL BLOCK FORD Finned Valve Covers

- 221 -302 Ford & Mercury
- MNMP655**



BUICK

- Fits 322 - 364
- MNMP645**



FORD Y-BLOCK

- Fits 292 - 312
- MNMP640**



Pontiac 1957

- MNMP646**



CADILLAC

- MNMP644**



OLDSMOBILE

- MNMP642**



RPC VALVE COVERS

SMALL BLOCK CHEV ALUMINIUM VALVE COVERS

- Fits Small Block Chev 1958-86
 - Supplied with Breather & PCV Grommets
 - Baffled
 - Plain - No Hole**
- | Finish | Short | Tall |
|----------|------------|------------|
| Polished | RPCR6031-1 | RPCR6030-1 |



Plain - With Hole

Finish	Short	Tall
Polished	RPCR6131-2	RPCR6130-2



Ball Milled - With Hole

Finish	Short	Tall
Polished	RPCR6131	RPCR6130
Chrome	RPCR6131C	RPCR6130C



Flamed - With Hole

Finish	Short	Tall
Chrome	RPCR6131XC	RPCR6130XC
Polished	RPCR6131X	RPCR6130X



SB CHEV CHROME "350" LOGO

Tall steel valve covers. **RPCR9841**



Aluminium recessed valve covers (Baffled)

Fits 1958-86 Chevy 283, 305, 327, 350 and 1987-95 Pontiac / Camaro / Firebird 350



Plain - Tall With Hole

Polished **RPCR6152**



Ball Milled - Tall With Hole

Polished **RPCR6154**
Chrome **RPCR6155**



Flamed - Tall With Hole

Chrome **RPCR6156**



CHEV SB CHROME VALVE COVERS

- Fits small block Chev 1958-86
 - Short 2-5/8" or tall 3-5/8" height available
 - Supplied with PCV & breather grommets
- | Description | Short | Tall |
|------------------------------|----------|----------|
| Chrome Valve Covers - Plain | RPCR4963 | RPCR4962 |
| Chrome Valve Covers - Flamed | RPCR8216 | RPCR8215 |



FABRICATED ALLOY VALVE COVERS

- Constructed with Billet Rail
- Hardware Kit Included
- Supplied with no Breather Holes

Chev Big Block 3-1/2" High

RPCR6244



Chev Small Block 3-3/4" High

RPCR6144



Chev / Holden LS1 With Coil Mounts & Oil Cap 2-1/2" High

RPCR6142 - Natural
RPCR6142POL - Polished



Ford Windsor 3-1/2" High

RPCR6344



CHEV NOSTALGIC FINNED ALLOY VALVE COVERS

- Fits Chev 1958-86 283, 305, 327, 350 and 1987-95 Pontiac / Camaro / Firebird 350.
 - Supplied with Grommets
 - Baffled
- Polished Finned - With Hole**
RPCR6186 Short
RPCR6181 Tall
- Polished Finned - Without Hole**
RPCR6185 Short
RPCR6180 Tall



Finned Alloy Covers For Centre Bolt Chevy

Fits 1987- up SB Chevy 305, 350 center Bolt

Polished Finned - Without Hole

RPCR6195 Short
RPCR6190 Tall

Polished Finned - With Hole

RPCR6196 Short
RPCR6191 Tall



CHEV CENTRE BOLT ALUMINIUM VALVE COVERS

- Fits Small Block Chev 1987-97
- Bolt Kit Included
- Supplied with Breather & PCV Grommets
- Baffled



Ball Milled - With Hole

Finish	Short	Tall
Polished	RPCR6037	RPCR6047
Chrome	RPCR6037C	RPCR6047C



Plain - With No Hole

Finish	Short	Tall
Polished	RPCR6036	RPCR6046

CHEV SB CHROME CENTRE BOLT VALVE COVERS

- Fits small block Chev 1987-0n
 - Stock 2-3/8" height
 - Supplied with PCV & breather grommets.
- Chrome Centre Bolt Valve Covers - Finned**
RPCR9702

CHEV SB OEM CENTRE BOLT VALVE COVERS

- Fits small block Chev 1987-0n
 - Stock 2-3/8" height
 - Unplated Steel
- Steel Centre Bolt Valve Covers - Finned**
RPCR9701R



Aluminium fabricated v/covers LS1

- 1-1/2" Tall, oil fill cap included
 - Includes bolts gaskets
 - With coil mounts
- RPCR6142** Satin Finish
RPCR6142POL Polished Finish



FABRICATED LS1 VALVE COVERS

- RPCR6141** Satin finish - No coil mounts.
RPCR6141POL Polished finished - No coil mounts.
RPCR6142BOLT LS Series Valve Cover Bolt Kit
RPCR6142G LS Series Valve Cover Gasket



LS Coil Covers

Black Glass

Filled Nylon

Composite

(Big Block Chevy

Covers Replica Look)

Thanks to Holley Big Block Chevy Replica coil covers you can give your LS a Big Block look without the Big Block Price. The new Holley Big Block Chevy replica coil covers are constructed from Glass Filled Nylon Composite for strength and durability. The covers are easily installed by using basic hand tools. Just replace a few coil bracket mount bolts with the included ball studs and snap the covers in place. The Holley Big Block Chevy replica coil covers are completely paintable so they can be customized to your taste. Minor trimming is required.

LS Coil Valve Covers Black BBC Chevy Look And Size HO242-1

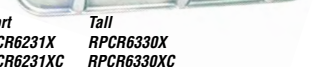
BIG BLOCK CHEV NOSTALGIC FINNED ALUMINIUM VALVE COVERS

- Fits Chev 1965-95 Big Block 396 - 502
 - Bolt Kit Included
 - Supplied with Breather & PCV Grommets
 - Baffled
- Polished Finned - With Hole**
RPCR6281 Tall 4"
- Polished Finned - Without Hole**
RPCR6280 Tall 4"



Flamed - With Hole

Finish	Short	Tall
Polished	RPCR6231XC	RPCR6330XC
Chrome	RPCR6231XC	RPCR6330XC



CHEV BIG BLOCK ALUMINIUM VALVE COVERS

- Fits Big Block Chev 1965-95 396 - 502
- Bolt Kit Included
- Supplied with Breather & PCV Grommets
- Baffled



Plain - With Hole

Finish	Short	Tall
Polished	RPCR6231-2	RPCR6330-2



FORD CLEVELAND CHROME VALVE COVERS

- Fits Ford 302-351 Cleveland and 351-400M
- Tall 3-5/8" height
- Supplied with PCV & breather grommets

Ford Cleveland Chrome Valve Covers - Plain **RPCR9295**



FORD NOSTALGIC FINNED ALUMINIUM COVERS

- Fits Ford 1964 and up V8 289 - 302

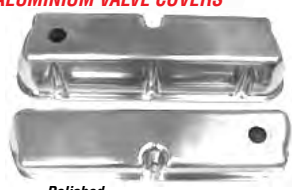
Polished Finned - With Hole

RPCR6291



FORD WINDSOR ALUMINIUM VALVE COVERS

- Fits Ford 260-351 Windsor 1962-85
- Baffled
- Supplied with Breather Hole
- 3-13/16" Tall



Description	Polished
Plain (No Holes)	RPCR6170
Plain	RPCR6171
Ball Milled	RPCR6172



FORD CHROME VALVE COVERS

- Fits Ford 1954 - 64
 - FORD V8 292 - 312
 - Y BLOCK 3-1/2" TALL
- RPCR7541**

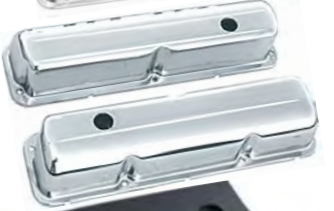


CHROME

FE VALVE

COVERS

- Chrome valve covers Ford FE 352-428
- RPCR9296**



426 HEMI

ALUMINIUM

VALVE COVERS

- Fits 1966-71 426 Hemi Engines
 - Oil Cap Sold Separately
- Description**
426 Hemi Valve Covers Polished **RPCR6295**
426 Hemi Oil Cap Black **RPCR6296**





ENGINE DRESS UP KITS

SB CHEVY 1958-86

Kit Contains:

- Chrome Valve Covers
- Chrome Timing Cover
- Chrome Timing Tab
- Chrome Breather Cap
- Breather & PCV Grommets

Description

Short Valve Covers

Tall Valve Covers



Chrome	Flamed
RPCR3023	RPCR3033
RPCR3024	RPCR3034

BB CHEVY 1965-95

Kit Contains:

- Chrome Valve Covers
- Chrome Timing Cover
- Chrome Timing Tab
- Chrome Breather Cap
- Breather & PCV Grommets

Description

Short Valve Covers

Tall Valve Covers



Chrome	Flamed
RPCR3027	RPCR3037
RPCR3026	RPCR3036

FORD WINDSOR 289-351

Kit Contains:

- Chrome Valve Covers
- Chrome Valve Cover Wingnuts
- Chrome Valve Cover Tabs
- Chrome Breather Caps
- Breather Grommets

Description

Std Valve Covers



Chrome	Flamed
RPCR3025	RPCR3035

CHRYSLER 318-360

Kit Contains:

- Chrome Valve Covers
- Chrome Valve Cover Wingnuts
- Chrome Valve Cover Tabs
- Chrome Breather Caps
- Breather Grommets

Description

Std Valve Covers

Chrome
RPCR3029

CHROME STEEL PUSH IN BREATHER (with 5/8 tube)

Chrome steel push-in breather with tube **RPCR9241**

ALUMINIUM PUSH IN BREATHER CAPS

- 1" Neck Fits standard Grommets
- Polished or Chromed Aluminium

Description

Plain

Ball Milled

Ball Milled Black Chrome



Polished	Chrome
RPCR6001	RPCR6001C
RPCR6101	RPCR6101C
	RPCR6101BC

ALUMINIUM PUSH IN PCV BREATHER CAPS

- 1" Neck Fits standard Grommets
- Polished or Chromed Aluminium
- Built in PCV Valve

Description

Plain

Ball Milled

Flamed



Polished	Chrome
RPCR6000	RPCR6000C
RPCR6100	RPCR6100C
RPCR6000X	

BILLET ALUMINIUM BREATHERS

- 1" Neck Fits standard Grommets
- Polished Finned Aluminium
- Available with Built in PCV Valve

Nostalgia Finned

Breather Cap - Polished

PCV Valve Cap - Polished

Breather Cap - Polished / Satin

PCV Valve Cap - Polished / Satin

RPCR6505
RPCR6500
RPCR6509
RPCR6504

Plain

Breather Cap - Polished

PCV Valve Cap - Polished

RPCR6506
RPCR6501

VALVE COVER BAFFLE

RPCR6034 - Baffles to suit aluminium valve covers SB & BB Chev.



BILLET PCV VALVE

- 3/4" Neck Fits standard Grommets
- RPCR6008** Plain Polished



Chrome Hex Head Mini Bolt

1-3/8" height, Pack of 4

RPCR7283 1/4-20 x 1-3/8 thread

RPCR7284 5/16-18 x 1-1/2 thread



T-BAR VALVE COVER WING NUTS

Chrome T-Bar Valve Cover Wing Nuts, 4-1/4 inch Tall with 1/4-20 x 1-3/8-inch stud (Package of 4).

RPCR9120 T-Bar Valve Cover Wing Nuts

DELUXE VALVE COVER WING NUTS

Chrome Deluxe Style Valve Cover Wing Nuts, 4 inch Tall with 1/4-20 x 1-3/8-inch stud (Package of 4).

RPCR1006 Deluxe Valve Cover Wing Nuts

ANODIZED VALVE COVER

T-BAR WING NUTS

Anodized Aluminium T-bar Valve Cover Wing Nuts, 4-5/8 inch Tall with 1/4-20 x 1-3/8-inch stud (Package of 4).

RPCR6011 Blue

VALVE COVER GROMMETS

- Grommets for valve covers with 1.25" hole
- 1" ID fits standard push in breather caps
- 3/4" ID fits standard PCV valves
- Sold as pairs

Breather Grommets for

Steel Valve Covers

Valve Covers

PCV Grommets for Steel

Valve Covers (1" OD)

RPCR4878

RPCR4998

RPCR9760

VALVE COVER MINI TABS

Chrome Steel Valve Cover Mini tabs. Sold in sets of 8. Improves valve cover sealing by spreading the load from the bolts.

RPCR9067 Chrome Mini Tabs - 1-1/2" Wide

VALVE COVER SPREADER BARS

Chrome Steel Valve Cover Spreader Bars. Sold in sets of 4.

Improves valve cover sealing by spreading the load from the bolts.

RPCR7407 Chrome Spreader Bars - 3" Wide

RPCR4993 Chrome Spreader Bars - 4-3/4" Wide

VALVE COVER SPREADER BAR KITS

Chrome valve cover spreader bar kits. Improves valve cover sealing by spreading the load from the bolts. Two kits required per engine.

RPCR4993

RPCR9640

RPCR9642

Chev Small Block Kit

Chev Big Block Kit

Ford 289-351W Kit

CHROME TWIST-IN OIL FILLER CAP

- Chrome plated non-breather type oil filler cap
- Twist-in style for early GM valve covers.

Chrome Twist-In Oil Filler Cap

RPCR4804

ALUMINIUM SCREW-IN OIL FILLER CAPS

- Chrome or Polished aluminium non-breather type oil filler cap
- Screw-in style for 1987-On GM Applications

GM Screw-In Oil Filler Cap - Polished

GM Screw-In Oil Filler Cap - Chrome

Gm Screw Type - 87-on (non breather) Chrome

RPCR6696

RPCR6696C

RPCR9696

ALUMINIUM PUSH-IN OIL FILLER CAPS

- Polished aluminium non-breather type oil filler cap
- 1" neck fits standard grommets

Polished Push-In Oil Filler Cap - Plain

Polished Push-In Oil Filler Cap - Flamed

RPCR6050

RPCR6050X

CHROME PUSH-IN OIL FILLER CAPS

- Chrome top, rubber base non-breather type oil filler cap
- Fits valve covers with 1.25" holes
- No grommet required

Chrome Push-In Oil Filler Cap - Plain

Chrome Push-In Oil Filler Cap - Oil Logo

RPCR9170

RPCR9787

CHROME OIL FILLER TUBE & BREATHER CAP

- Chrome plated oil fill tube for Chev V8
- Suits engines with oil filler tube on the intake manifold
- Chrome 2-3/8" OD breather cap sold separately.

Chrome Oil Filler Tube

Chrome Breather Cap

RPCR4955

RPCR4802



VALVE COVER SPACERS

RPCR7661 BBC Valve cover 1 inch spacers "polished".

RPCR7662 BBC Valve cover 1 inch spacers "black".

RPCR7664 SBC Valve cover 1 inch spacers "polished".

RPCR7665 SBC Valve cover 1 inch spacers "black".

RPCR7667 SBF 1-3/8" Valve cover spacers "polished".

RPCR7668 SBF 1-3/8" Valve cover spacers "black".



Billet Specialties Small Block Chevy Valve Covers

Our polished aluminum valve covers are guaranteed to draw attention to your engine compartment. Choose from many styles for small block and big block Chevrolet® applications. Designs are available in short and tall heights, and have a 1.25" diameter breather hole positioned between the rockers to reduce oil splash. Use tall if using roller rockers and stud girdles. Metal baffles are included with all small block valve covers. Valve covers are produced from a high grade aluminum that is polished to Billet Specialties standards and each design is CNC machined in the USA.



Profile Series Valve Covers

Matte Black Powder Coat with Polished Strip.

Features:

- Includes Metal Baffles
- Includes Grommets
- Die Cast Valve Cover with Billet Aluminium Strip
- Works with 1-1/4" Breathers Available

Small Block Chevy

Black with polished strip **BS95224**

Bare with polished strip. **BS95224RTF**

Big Block Chevy

Black with polished strip **BS96124**

Bare with Polished Strip. **BS96124RTF**



LS Chevrolet - Tall (Hides Coils)

Billet Specialties modular valve covers for the LS platform not only feature aggressive styling they retain the coil packs in the factory location. Precision machined from Billet aluminum these innovative valve covers feature stainless hardware and black mesh screen with a hidden oil fill. Available in Polished or Black Anodized finish the valve covers are the perfect accessory for the high tech engine compartment. For use with LS1 / 1st Gen. coil packs.

BS95460 Polished

LS Chevrolet - Tall (Hides Coils) - For LS1 Coils (98-02 Camaro)

BS95465 Black Anodized

LS Chevrolet - Tall (Hides Coils) - For LS1 Coils (98-02 Camaro)



LS CHEVROLET VALVE COVERS with Smooth tops

Suit LS3 Coils

BS95471 Polished Smooth Finish

LS Chevrolet - Tall (Hides Coils) - For LS3 Coils (2014-On)

BS95476 Black Anodized Smooth Finish

LS Chevrolet - Tall (Hides Coils) - For LS3 Coils (2014-On)



LS Chevrolet Script Valve Covers

Billet Specialties New "Chevrolet" Script Modular LS Valve Covers bring classic style to your modern motor. Available in Polished or Brite Black Anodized finish, our Modular Valve Covers hide the coils and harness for a clean look as well as provide a more traditional appearance for your LS Motor. Precision Machined from 6061-T6 Aluminium, each pair of Valve Covers feature Quality ARP Fasteners to match other Billet Accessories as well as threaded breather ports and OEM gasket integration.

- 6061-T6 billet aluminium construction.
- ARP 12 pt. stainless fasteners included. Matches our other Accessories
- Hidden Oil Fill Cap
- Works with GM Coils P/N 12611424
- Precision 3D Machined
- Not for use with OEM Corvette accessory drives.

BS95480 Polished Finish
BS95485 Black Finish



LS Valve Cover Adapters

Allows the use of standard small block Chevrolet valve covers on a LS motor for a classic look.

- Machined from 6061-T6 Aluminium
- Utilizes OEM LS valve cover gasket on bottom and cork gasket on the top
- Hardware included
- Requires coil re-location

BS95030



LS Chevrolet

Profile Valve Covers

Milled from a solid piece of billet alloy. Include stainless Hardware.

BSP95459 Plain
BSP95450 Ribbed

Plain
BS95129 Short
BS95229 Tall

Ribbed
BS95620 Tall



Profile Valve Covers

Milled from a solid piece of billet alloy. Include stainless Hardware.

BSP95250 Small Block Chev Tall

Small Block Chevy - Centre Bolt Valve Covers

Cross Flags
BS95827 Short
Bolts Included



Cross Flags
BS95727 Long
Bolts Included



Plain
BS95829 Short
Bolts Included

Plain
BS95729 Tall
Bolts Included



Ball Milled
BS95820 Short
Bolts Included

Ball Milled
BS95720 Tall
Bolts Included



Profile Valve Covers
Milled from a solid piece of billet alloy. Include stainless Hardware.

BSP95850 Centre Bolt Chev

Billet Specialties Big Block Chevy Valve Covers

Ball Milled
BS96020 Short
BS96120 Tall



Chevy Power
BS96022 Short
BS96122 Tall

Cross Flags
BS96027 Short
BS96127 Tall

Plain
BS96029 Short
BS96129 Tall

Chevrolet
BS96023 Short
BS96123 Tall

Bowtie
BS96021 Short
BS96121 Tall

Small Block FORD Valve Covers



Ball Milled
1962-1985 289/302/351W/ & 5.0L
BS95320 Tall

Oil Fill Cap Aluminum Weld-in Bung



Precision machined from 6061-T6 billet aluminium Billet Specialties oil fill caps fit a variety of applications. Weld-in bung is 1-5/8" diameter and can be used by welding bung to valve covers, aluminium tanks, etc.

- Product Features
- Knurled edge for positive grip
 - Buna-N® O-Ring for a good seal and no-leak operation
- BS23320** Screw-On (Late GM)
BS24110 Aluminium Weld-In
BS23120 Push-On (1-1/4" Hole)
BS23220 Twist-On
BS89220 '88-on GM Truck Oil Fill Cap Cover (2.35" ID x .5" tall)



Valve Cover Hold Downs

These billet valve cover hold-downs are the perfect finishing touch for your motor...both big block and small block. Each hold down is 2-7/8" tall with 1/4-20 threaded stud. Long stud kit (BSRP9510) required when using hold downs with billet wire looms. Sold in packs of 4.

BS95013 Hex
BS95011 Acorn
BS95012 Ribbed

**Billet Specialties Breathers**

Billet Specialties breathers are precision machined in the USA from 6061-T6 billet aluminum and feature a unique 2 pc. design with a positive o-ring seal. They are easily maintained with a washable filter element. The PCV breather features a common replaceable PCV valve with a barbed fitting for 3/8" hose. Available for 1" or 1-1/4" diameter valve cover holes.

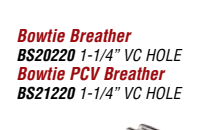
TECH TIP Valve covers should be run with one breather and one PCV valve or PCV breather for proper air circulation.

**Plain Breather**

BS20120 1-1/4" VC HOLE
BS20125 1" VC HOLE
Plain PCV Breather
BS21120 1-1/4" VC HOLE
BS21125 1" VC HOLE

**Round Ball Milled Breather**

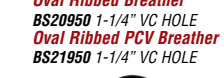
BS20820 1-1/4" VC HOLE
BS20825 1" VC HOLE
Round Ball Milled PCV Breather
BS21820 1-1/4" VC HOLE
BS21825 1" VC HOLE

**Bowtie Breather**

BS20220 1-1/4" VC HOLE
Bowtie PCV Breather
BS21220 1-1/4" VC HOLE



Cross Flags Breather
BS20720 1-1/4" VC HOLE
Cross Flags PCV Breather
BS21720 1-1/4" VC HOLE

**Oval Ribbed Breather**

BS20950 1-1/4" VC HOLE
Oval Ribbed PCV Breather
BS21950 1-1/4" VC HOLE



Oval Ball Milled Breather
BS20920 1-1/4" VC HOLE
Oval Ball Milled PCV Breather
BS21920 1-1/4" VC HOLE

**Billet PCV Valve**

Billet Specialties PCV valve is engineered to be used with Billet Specialties and O.E. valve covers with the factory grommet. Uses a common replaceable PCV valve found at any auto parts store.

BS21220 1" VC HOLE



Oval Plain Breather
BS20929 1-1/4" VC HOLE
Oval Plain PCV Breather
BS21929 1-1/4" VC HOLE

Retro Chevrolet Script Breather

BS20923 1-1/4 VC HOLE
BSBLK20923 1-1/4 VC HOLE BLACK

Retro Chevrolet Script PVC Breather

BS21923 1-1/4 VC HOLE
BSBLK21923 1-1/4 VC HOLE BLACK

Retro Plain Script Breather

BS20939 1-1/4 VC HOLE

Retro Plain Script PVC Breather

BS21939 1-1/4 VC HOLE

Replacement Baffles

Replacement baffles for Billet Specialties valve covers. Sold in pairs.

BSRP956033 For SBC Tall Covers
BSRP956034 For SBC Short, BBC Tall & All Centre Bolt Covers
BSRP956035 For BBC Short Covers

Long Stud Kit for Valve cover Hold Downs

For use when a Billet Wire Loom is installed and used in conjunction with Billet Valve cover Hold Downs. Works with either Small Block or Big Block.

BSRP9510 Long Stud Kit For Valve Cover Hold Downs

Breather/PCV Grommets

These grommets suit Billet Specialties and other valve covers with a 1.25" hole. Sold individually.

BS95001 PCV Grommet - 3/4" ID
BS95002 Breather Grommet - 1" ID
BS95003 Baffled Breather Grommet - 1" ID

Replacement Breather Elements

Replacement Breather Elements for Billet Specialties Oval/Round Breathers. Sold in packs of 4.

BSRP2010 Round Breather Elements (4)
BSRP2011 Oval Breather Elements (4)

VALLEY COVERS**57-66 Buick Nailhead****valley cover finned aluminium.****OTVCB**

This is a finned replacement for that boring pan under your manifold. It has a much more distinct fin pattern and stronger casting than any other available!

Fits 57-66 364 401 and 425 engines. (will not fit under OEM 2x4 manifold without clearancing for heat exchanger)

**MOON Finned Valley Covers**

Available cast to match the No Name valve covers. Breather can be added on request at extra cost. (special order) Gasket & Bolt sets also available call for more information.

MNMPVC30 Oldsmobile
MNMPVC31 Ford & Mercury Y Block 1957
MNMPVC32 Hemi 51 - 58
MNMPVC33 Cadillac
MNMPVC34 Buick Nail Head

**LS Valley Cover - Ribbed**

Billet Specialties new LS valley cover is engineered to fit LS2, LS3, LS7 & LSX blocks when using a carbureted manifold. This valley cover's ribbed design is precision machined from 6061-t6 aluminium and polished to a mirror finish to match our other ribbed accessories. High quality ARP 12pt hardware is included for the perfect finishing detail. Featuring a provision machined into the back for the factory breather box and two 1/8" NPT ports for use with external breathers, oil separators or catch cans. Designed for use with your OE factory gasket (not included). Made in the USA.

BS95050

**BILLET SPECIALTIES LS VALLEY COVERS**

The Billet Specialties LS Plain Valley Cover offers a simple no frills approach to the top of your Gen IV LS Engine Block.

- Precision Machined from 6061-T6 Billet Aluminium
- Works with the OEM LS gasket for a leak free seal
- Stainless Fasteners included
- Made in the USA

Black Anodised
Raw Finish

BSBLK95059
BS95059

**GM VALLEY PLATE**

LS2/LS3 Valley Plate with Breather

GM12599296

H0241-256

H0241-263

H0241-262

H0241-265

HOLLEY LS VALLEY COVER

Holley continues to expand their offerings for the GM LS engine platform with its latest offering of Aluminium Valley Pan covers for LS1/LS6 & LS2/LS3/LS7/LSX GM LS engines. Available in either the classic finned design to match our popular finned line of valve covers or new trussed design for a race inspired look. These covers are either die cast or billet aluminium to ensure a high quality, high detail part. Provisions for factory oil pressure sender are cast or marked on the bottom of the cover to allow for individuals wanting to use.

Description

GM LS1/LS6 Finned Valley Cover, Natural Cast
GM LS1/LS6 Trussed Valley Cover, Black Satin Finish
GM LS2/LS3/LS7/LSX Trussed Valley Cover, Natural Billet
GM LS2/LS3/LS7/LSX Trussed Valley Cover, Satin Black Finish

Part No

H0241-256
H0241-262
H0241-263
H0241-265

VALLEY COVER ACCESSORIES**FORD ROCKER COVER BOLTS**

Chrome Bolt kit suits 302-351
Cleveland Ford Motorsport
Covers (Cap Screw)
AF37-0005

**Chrome Valve Cover Nuts**

These chrome valve cover nuts feature the Ford oval logo and come with screw in studs. 1/4"-20 thread fits most V8s (except FE). Sold in sets of 4.

FMM-6680-A Chrome Valve Cover Nuts (4)

Chrome Valve Cover Wing Nuts

These chrome valve cover wing nuts feature the Ford oval logo and come with screw in studs. 1/4"-20 thread fits most V8s (except FE). Sold in pairs.

FMM-6680-A302

Chrome Valve Cover Wing Nuts (2)

**EXTRA LONG VALVE COVER WING NUTS**

Extra Long Valve Cover Wing Nuts will clear 4-1/2" tall valve covers. Includes matching studs to speed up installation. Available in chrome plated steel or gold anodized aluminium. Four per pack.

M068610

Chrome Plated Steel

**LS Series Valve Cover Spacers**

This cast aluminium valve cover spacer kit for LS1 and L98 engines raises the valve covers by 25mm for extra clearance when using roller rockers and high lift cams. Includes fasteners and coil offset bracket. Note: requires longer ignition leads.

YT5123

LS Series Valve Cover Spacer Kit

LS Series Extra Thick Valve Cover Seals

Extra thick rubber valve cover gaskets for LS1 style engines to raise the valve covers by 8mm for extra clearance when using roller rockers and high lift cams. Sold in pairs.

YT5132

LS Series Extra Thick Valve Cover Seals

**Bowtie Emblem Welsh Plug Inserts**

Give your engine block the ultimate trick look with Proform's machined billet aluminium Bowtie Emblem Welsh Plug Inserts. Choose from either the popular recessed emblem or the new black with raised emblem. Fits all Chevy small block engines except LS-series.

Note: This is not a welsh plug replacement. Sold as pairs.

Description

Welsh Plug Inserts with Recessed Red Emblem (2)
Welsh Plug Inserts with Raised Black Emblem (2)

Part No.

PR141-233
PR141-232





SLANT-EDGE ALUMINIUM

PUSH-IN AIR BREATHER CAP

No more stamped steel breather caps for aluminium valve covers! Complete your engine dress-up look with a breather cap that actually matches your look! These new Slant-Edge aluminium push-in breather caps are available in five different finishes, and with just about every Ford Oval emblem configuration imaginable: raised and milled, recessed with inlaid paint, and even no emblem at all. The vivid 3D Oval emblem gives this 2.5 inch diameter breather cap a bold clean look.

- Made from High-Quality Aluminium
- Push-In Style
- Fits Twist-On Holes, and 1.22" Push-In Holes
- Special Twist-On Grommet Included (Mopar Breathers)
- Grommet Not Included (Chev/Ford Breathers)
- Officially Licensed Product

PR141-850	Plain Polished, No Logo
PR141-851	Plain Chrome, No Logo
PR141-852	Chev Chrome, Recessed Black Bowtie Emblem
PR141-853	Chev Chrome, Recessed Red Bowtie Emblem
PR141-854	Chev Polished, Recessed Black Bowtie Emblem
PR141-855	Chev Polished, Recessed Red Bowtie Emblem
PR141-856	Chev Chrome, Black Infill, Chrome Bowtie Emblem
PR141-857	Chev Polished, Black Infill Polished Bowtie Emblem
PR141-858	Chev Black Crinkle, Raised Bowtie Emblem
PR141-859	Chev Orange, Raised Bowtie Emblem
PR141-860	Chev Cast Grey Crinkle, Raised Bowtie Emblem
PR141-861	Chev Black Crinkle, Recessed Red Bowtie Emblem
PR141-862	Plain Black Crinkle, No Logo
PR302-430	Plain Polished, No Logo
PR302-435	Ford Black Crinkle, Raised Oval Emblem
PR302-346	Ford Blue, Raised Oval Emblem
PR302-347	Ford Cast Grey Crinkle, Raised Oval Emblem
PR302-438	Ford Polished, Recessed Black Oval Emblem
PR302-439	Ford Chrome, Recessed Black Oval Emblem
PR302-440	Ford Black Crinkle, Recessed Red Oval Emblem
PR440-440	Mopar Black Crinkle, Raised Mopar Emblem
PR440-441	Mopar Polished, Recessed Black Mopar Emblem
PR440-442	Mopar Chrome, Recessed Black Mopar Emblem



Ford Air Breather Caps

The top of each air breather cap is embossed handsomely with Ford Racing, Cobra, or Mustang emblems. The perfect complement to your valve covers.

PR302-200	Ford Racing, Twist On - Chrome
PR302-215	Ford Racing, Push In - Chrome
PR302-216	Ford Racing, Push In - Black Crinkle
PR302-220	Ford Mustang, Push In - Chrome
PR302-221	Ford Mustang, Push In - Black Crinkle
PR302-225	Ford Cobra, Push In - Chrome
PR302-226	Ford Cobra, Push In - Black Crinkle

Ford Valve Cover Wing Nuts

The Ford oval is cut sharply into the top of each wing nut. The lower ends of the shafts are manufactured with wide shoulders for broad load distribution. All nuts are supplied with a separate stud which permits precise gasket positioning on the head prior to mounting the valve covers. 1/4-20 threads. Does not fit FE engines. 4 per package.

PR302-325	Wing Nuts, Chrome
PR302-326	Wing Nuts, Black Crinkle

Ford Valve Cover Mini Nuts

High quality steel mini nuts with the Ford oval cut sharply into the top. Supplied with a separate stud which permits precise gasket positioning on the head prior to mounting the valve covers. 1/4-20 threads. Does not fit FE engines. 4 per package.

PR302-315	Mini Nuts, Chrome
PR302-316	Mini Nuts, Black Crinkle

Valve Cover Wing Nuts

Chevrolet Bowtie Emblem is cut sharply into the top of each wing nut. The lower ends of the shafts are manufactured with wide shoulders for broad load distribution, and each wing nut is supplied with a separate stud which permits precise gasket positioning on the head prior to mounting the valve covers. Fits Chevrolet small and big block, and V6. 1/4" x 20 threads. 4 per package.

PR141-600	Wing Nuts, Chrome
PR141-756	Wing Nuts, Black Crinkle
PR141-902	Wing Nuts, Chrome, Red Bowtie



Valve Cover Hold-Down Clamps

By spreading the load over a wider area, these clamps minimize distortion of the valve cover flanges, thereby decreasing the possibility of oil leakage. Fits Chevrolet small-block V8 and V6/90° engines through 1986. 4 per package.

PR141-610	Hold-Down Clamps, Chrome
PR141-757	Hold-Down Clamps, Black Crinkle
PR141-903	Hold-Down Clamps, Chrome, Red Bowtie
PR141-366	Hold-Down clamps, Metallic Grey, Blue Bow Tie.



BLACK & CHROME VALVE COVER BREATHERS

PR141-621	Chev Bowtie Chrome Push-in, filter, with hood
PR141-622	Chev Bowtie Chrome Push-in, filter, without hood
PR141-613	Chev Bowtie Black Push-in, filter, with hood
PR141-614	Chev Bowtie Black Push-in, filter, without hood
PR302-233	Ford Racing Black Push-in, filter, with hood
PR302-234	Ford Racing Black Push-in, filter, without hood

These popular push-in filter air breathers, with the raised Bow Tie emblem stamped prominently in the top, are offered in two styles: with the heat-shield hood and without. 3" diameter. Fits valve covers with 1.22" holes.

PR141-621	Push-in, filter, with hood
PR141-622	Push-in, filter, without hood

Push-In Bowtie Oil Filler Cap

Chevrolet Bowtie embossed and raised on top. For valve covers with 1.22" diameter hole. Non breather type.

PR141-630	Bowtie Oil filler cap
-----------	-----------------------

Air Breather Caps

The top of each air breather cap is embossed handsomely with a raised Bow Tie emblem to compliment the genuine factory parts appearance of the engine. Black crinkle breather cap is the perfect complement to die-cast or stamped black crinkle valve covers. For use in valve covers with grommets fitting 1.22" holes. Technical Note: Use with grommet in Grommet Set PR141-615.

PR141-616	Push-in, 3" dia.
PR141-754	Push-in, 3" dia., Black Crinkle

For use in valve covers with grommets fitting 1.22" holes.

PR141-619	Push-in, rectangular
-----------	----------------------

For use with oil filler tube (PROFORM P/N 66020) or 1.82 opening.

PR141-617	Push-on, 3" dia.
-----------	------------------

For use with Chevrolet style holes. Technical Note: Manufactured with non-asbestos gaskets. It may be necessary to remove one gasket for proper clearance.

PR141-618	Twist-on, 3" dia.
-----------	-------------------

Twist-On Air Breather Caps

Plain Chrome twist-on style breather caps fit Chev OEM stamped valve covers.

PR66012	Plain Twist-On Breather Cap With PCV Tube
---------	---

Valve Cover Grommet Set

Suits Proform and other brands of aftermarket valve covers with a 1.22" diameter hole. Includes one push-in breather grommet and one for PCV valve.

PR141-615	Valve Cover Grommet set
-----------	-------------------------

CHROME PUSH-IN BREATHER CAPS

- Chrome 2-3/4" diameter push in breather cap
- 3/4" or 1" necks fit standard grommets

Chrome Push-In Breather Cap - 3/4" Neck	RPCR9171
Chrome Push-In Breather Cap - 1" Neck	RPCR4870

CHROME PUSH-IN BREATHER CAP WITH TUBE

- Chrome push in breather cap with 5/8" tube
- 1" neck fits standard grommets
- OEM replacement for Mopar applications

Chrome Push-In Breather Cap with Tube	RPCR9169
---------------------------------------	----------

CHROME PUSH-IN OPEN BREATHER CAPS

- Filter style breather with chrome top and rubber base
- Fits valve covers with 1.25" holes
- No grommet required
- 2" Tall without Shield

RPCR7192

3" Tall without Shield

RPCR9308

3" Tall with Shield

RPCR9516

CHROME CLAMP-ON OPEN BREATHER CAPS

- Filter style breather with chrome top and rubber base
- Fits 1-3/8" or 1-1/2" diameter tubes
- No grommet required
- 3" Tall without Shield for 1-1/2" Tube
- 3" Tall with Shield for 1-1/2" Tube

RPCR9309

RPCR9517



CHROME PLATED TWIST ON BREATHER

Chrome plated Breather cap embossed with or without the Mr. Gasket Logo. Features a high porosity filter, plus an internal baffle. Twist on style fits many OEM valve covers.

2-3/4" dia. x 2-1/8" with logo	MG2069
2-3/8" dia. x 1-3/4" without logo	MG2061



VALVE COVER GROMMETS & PLUGS

Moulded from Neoprene to ensure a positive oil seal and made to fit stamped and cast valve covers. Available in a wide variety of sizes and packaged 2 per set.

Description	Part No.
Valve Cover Plugs, 1.22" O.D.	MG6375
1 x valve cover & 1 x PCV grommet, 1.22" OD	MG6376
PCV grommets, 1.22" O.D. x 3/4" I.D.	MG6377
Ford PCV grommets, 1" O.D. x 3/4" I.D.	MG6379



VALVE COVER HOLD DOWN TABS

Small Block & 90° V6 Chevrolet

- Specifically designed to spread the fastener load over a larger area of the valve cover flange to eliminate flange distortion and subsequent oil leakage
- Available in brass-plated steel (to match gold anodized and gold zinc covers), chrome plated steel, red and blue powder coated steel

MO68510 Valve Cover Hold Down Tabs, Chrome Plated Steel.

Ford 221, 260, 289, 302, 351W

- Set fits one valve cover, includes three 3" tabs for the shallow recessed bolt holes and one 4" tab for the deep recessed bolt hole. Use 1/4" washer face bolts for the two end holes.

MO68519 Valve Cover Hold Down Tabs, Chrome Plated Steel. Ford 221, 260, 289, 302, 351W.

ALUMINIUM PCV VALVE

Machined aluminium clear anodized PCV fits valve covers with 1" I.D. grommets. Hose barb fits 3/8" (10mm) hose.

Aluminium PCV Valve	MG5553
---------------------	--------



OIL FILLER CAP PLUG TYPE

This plug features a chrome plated top with the distinctive Mr. Gasket embossed logo in the center. Fits all GM OEM or aftermarket valve covers with 1.221" dia. hole.

MG2067	2 3/16" dia. x 5/8" ht. w/ Logo
--------	---------------------------------



MR GASKET

Twist-On Oil Filler Cap

Chrome plated steel oil filler cap. Fits most twist-on valve covers. Twist-on Oil Filler Cap

MG2062



CHROME PLATED PUSH-ON BREATHER

Dress up your engine with this sharp looking, chrome-plated push-on oil breather...Mr. Gasket logo is embossed on top...This new cap is internally baffled and uses a high-porosity filter...Great for hi-performance use! Fits factory and after-market valve covers with 1.22" dia. hole. Replaces OEM-GM breather 6421868 on late 65-67 GM big block engines.

MG2068 2 1/2" dia. x 2 1/8" ht. w/ Logo

MOPAR VALVE COVER BREATHER PUSHON STYLE PCV*

This chrome plated breather, embossed with Mr. Gasket on its top, is perfect for race car vacuum balance systems as well as OEM use. It has a 1" O.D. neck and 58" O.D. breather tube with an integral metal baffle/foam element combination. Will fit any cover with 1.22" dia. hole.

MG2059 Fits Mopar A, B, RB, and Slant 6 Engines



CRANKCASE EVACUATION SYSTEM*

Designed primarily for drag race applications, this crankcase evacuation system is designed to reduce pressure build-up in the engine crankcase, providing for better piston ring seal, less intake charge contamination, and reduced oil leaks caused by high crankcase pressures, while increasing engine performance. Kit includes two chrome plated Mopar style push-on valve cover breathers, two breather grommets, two check valves and two 31/2" long, 45 degree cut/threaded tubes, which must be welded into collectors.

MG6002 Crankcase Evacuation System

CHROME PLATED OIL FILLER EXTENSION TUBES

Made from chrome plated steel, these oil filler extension tubes are ideal for use on late model engines with "hidden" valve covers. Two numbers cover most twist-on and push-on applications. Nominal length of 4" simplifies adding oil, yet clears most low profile hoods. Note: Uses 2062 filler cap.

MG2052 Push-On Style



MOROSO OIL FILLER CAP

Push-in design for applications requiring a sealing-type filler plug. Chrome Plated top section. Fits all Moroso and OEM valve covers with 1.22" diameter hole.

MG68660 Oil Filler Cap.

ONE PIECE PUSH-IN VALVE COVER BREATHERS

Designed to drain oil trapped in the foam back into the valve cover rather than allow it to drain out the air vents. Fits Moroso or any valve cover with 1.22" hole. Two per package except No. 68741.

MG68740 One Piece Push-In Valve Cover Breathers, Chrome Plated Steel.

POSITIVE LOCKING BREATHER

Meets rule requirement for cars running 7.99 E.T. and quicker. Threaded tube with collar mounts from inside valve cover through 1.22" opening; breather screws into the tube for secure attachment. Viton gasket resists oil, alcohol and race fuel to form airtight seal. Jam nuts allow breather to be positioned to suit plumbing requirements. Internal stainless steel baffling keeps oil/air separated. Clear finish resists rust. Includes all mounting hardware; one per pack.

MG68785 - Positive Locking Breather, with Tube for 3/4" hose.

SPRINT CAR BREATHER

TUBE KIT

Sprint Car racers can now mount an aluminum tube-style crossover breather kit to their aluminum valve covers and save some money in the process. Kit comes with all mounting hardware and aluminum bungs which must be welded to the valve covers.

MO68762 Valve Cover Breather Kit, SBC Sprint Cars.

PCV GROMMETS

With Integral Baffle. Designed to work with Fabricated Sheet Metal and Cast Aluminium Valve Covers that have a 1.220" diameter hole. Works with all popular GM PCV valves. Will not clear stud girdles, made from oil resistant rubber. Two per package.

MO68772 PCV Grommet/Baffle, 2 per package

PCV GROMMETS

Ideal for street enthusiasts using Moroso valve covers and wishing to install a positive crankcase ventilation system. Works with all popular GM PCV valves; two per package. Fits all Moroso valve covers and others with 1.22" diameter holes.

MO68770 PCV Grommets.

BREATHER GROMMETS

With Integral Baffle. Made from oil resistant rubber, this grommet also fits into any cover with 1.22" hole, replacing the OEM style grommet. Will not clear stud girdles. Two per pack.

MO68775

REAR END/WATER

FILL CAP KITS

MO85282 Rear End/Water Fill Cap Kit, Aluminum Bung.

VALVE COVER FILTERED BREATHERS

Available in half-hooded or non-hooded. Provides maximum protection against dirt and airborne debris without restricting air flow. Also available with completely exposed filter element and chrome plated top. All styles come in two types; Push-In or Clamp-On (for existing stacks; includes clamp). Cleanable and re-usable; oil before use. One per pack.

MO68817 Valve Cover Filtered Breather, Non-Hooded style, Push-In type. For Moroso Covers with 1.22" punched holes.



Flathead Fuel Pump Stand

& Breather Polished

Finned.
OTEFPSRA

Oil Breather Cover

Oil breather cover large 3-1/8" id finned aluminium. Oil breather cover small 2-3/8" id finned aluminium.

OTE0BL
OTE0BS



SCREW IN BREATHER ADAPTER Suits Nissan

Screw in breather adapter for Nissan valve covers with a threaded hole. Suits all RB30 and some SR20 with threaded hole.

Size Blue Black Silver
-10 AF708-10-M19 AF708-10-M19BLK AF708-10-M19S



BOLT IN BREATHER BULKHEAD

Bulkhead style vented nut and bolt for use on rocker covers, designed for use with AF77-2000 & AF77-2001. -10 bulkhead requires 22mm (7/8) hole in rocker cover. -12 bulkhead requires 27mm (1-1/16) hole in rocker cover.

Size Blue Black Silver
-10 AF777-10 AF777-10BLK AF777-10S
-12 AF777-12 AF777-12BLK AF777-12S



PUSH IN BREATHER ADAPTER TO -12AN

Aeroflow billet PCV valves are available with a 3/8" male barb or -6AN. They suit 1-1/4" holes in rocker covers. Grommet included.

Part No Colour Description
AF77-2012 Silver Push in breather adapter
AF77-2012BLK Black Push in breather adapter

Breather Adapters

Fabricated covers have an ORB port in the end of the covers for adapting breather hoses to catch cans. To run a filter in the top of the covers in a traditional style you can simply remove the filler cap and screw in a Aeroflow breather adapter. This will allow you to either use a push on or screw on breather.

ORB to AN Black Silver
SCREW ON
-16 to -10 AF920-10-16BLK AF920-10-16S
-16 to -12 AF920-12-16BLK AF920-12-16S
PUSH ON
-16 to 1-3/8" AF926-22-16BLK AF926-22-16S



PRESS IN BREATHER ADAPTER Suits Nissan

Press in breather adapter to suit Nissan RB20, RB25, RB26 CA18 & SR20 valve covers to replace the standard breather adapter. Also fits other models.

RB20, RB25 CA18 & SR20
-10AN AF708-10-01 AF708-10-01BLK AF708-10-01S
RB26
-10AN AF708-10-03 AF708-10-03BLK AF708-10-03S
-12AN AF708-12-03 AF708-12-03BLK AF708-12-03S



Breather Adapters Suits Ford

Aeroflow Performance have added to their ever expanding range of rocker cover breather adapters a front and rear adapter to suit the Ford Falcon 6cyl engine in the BA, BF and FG chassis. These adapters are a simple push-fit style and allow you to plumb a breather/catch tank in -8AN size. Available for front (AF708-08F) or rear (AF708-08R) of the engine in anodised Blue, Black and Silver finishes.

Suits Blue Black Silver
Cover Front AF708-08F AF708-08FBLK AF708-08FS
Cover Rear AF708-08R AF708-08RBLK AF708-08RS



BILLET PCV VALVE

Aeroflow billet PCV valves are available with a 9.52mm (3/8") male barb or -6AN. They suit 31.75mm (1-1/4") holes in rocker covers. Grommet included.

Part No Description Colour
AF64-2106 Polished Billet PCV with 3/8" barb
AF64-2106BLK Black Billet PCV with 3/8" barb
AF64-2107 Polished Billet PCV with -6AN barb
AF64-2107BLK Black Billet PCV with -6AN barb



BREATHERS with Stainless Steel Element

40 micron stainless steel element with an aluminium top and bottom plate.

Part No	Thread	O.D	Height	Colour
AF77-2003	-6	40mm 1-7/16"	37mm 1-9/16"	Polished
AF77-2003BLK	-6	40mm 1-7/16"	37mm 1-9/16"	Black
AF77-2002	-8	60mm 2-3/8"	50mm 2"	Polished
AF77-2002BLK	-8	60mm 2-3/8"	50mm 2"	Black
AF77-2000	-10	75mm 3"	75mm 3"	Polished
AF77-2000BLK	-10	75mm 3"	75mm 3"	Black
AF77-2001	-12	75mm 3"	75mm 3"	Polished
AF77-2001BLK	-12	75mm 3"	75mm 3"	Black

BREATHERS/CRANKCASE FILTERS

Aeroflow's huge range of breathers and crankcase filters are designed to provide supreme defence against dirt and airborne fragments without restricting air flow. They come in many different sizes and styles to suit any applications from racing to show cars. Aeroflow will have you covered.



Part No AF1822-7000
AF1821-7000
Finish Black
Chrome
Filter O.D. 2-3/4" (70mm)
Height: 1-7/16" (36mm)
Flange O.D. 1" (25.4mm)
Flange Style: Push in



Part No AF1822-7001
AF1821-7001
Finish Black
Chrome
With Outlet 5/8" (15.8mm)
Filter O.D. 2-3/4" (70mm)
Height: 1-7/16" (36mm)
Flange O.D. 1" (25.4mm)
Flange Style: Push in



Part No AF2271-1170
AF2871-1170
Finish Black
Chrome
Bottom Type: Black male steel spout
Filter O.D. 3" (76.20mm)
Element Height: 2" (50.8mm)
Flange ID: 1" (25.4mm)
Flange Style: Push in



Part No AF2271-1520
AF2871-1520
Finish Black
Chrome
With Shield
Bottom Type: Black male steel spout
Filter O.D. 3" (76.20mm)
Element Height: 2-1/2" (63.5mm)
Flange ID: 1" (25.4mm)
Flange Style: Push in



Part No AF2271-1490
AF2871-1490
Finish Black
Chrome
Bottom Type: Polyurethane Rubber
Filter O.D. 3" (76.20mm)
Element Height: 2-1/2" (63.5mm)
Suits hole: 1-1/4" (31.75mm)
Flange Style: Push in / built in gromet



Part No AF2271-1516
AF2871-1516
Finish Black
Chrome
With Shield
Bottom Type: Polyurethane Rubber
Filter O.D. 3" (76.20mm)
Element Height: 2-1/2" (63.5mm)
Suits hole: 1-1/4" (31.75mm)
Flange Style: Push in / built in gromet



Part No AF2271-2480
AF2871-2480
Finish Black
Chrome
Bottom Type: Polyurethane Rubber
Filter O.D. 1-3/8" (34.90mm)
Element Height: 1-1/8" (28.60mm)
Flange ID: 9/16" (14.3mm)
Flange Style: Clamp on



Part No AF2271-1320
AF2871-1320
Finish Black
Chrome
Bottom Type: Polyurethane Rubber
Filter O.D. 2" (50.80mm)
Element Height: 1-1/2" (38.10mm)
Flange ID: 3/8" (9.52mm)
Flange Style: Clamp on



Part No AF2271-1330
AF2871-1330
Finish Black
Chrome
Bottom Type: Polyurethane Rubber
Filter O.D. 2" (50.80mm)
Element Height: 1-1/2" (38.10mm)
Flange ID: 1/2" (12.7mm)
Flange Style: Clamp on



Part No AF2271-1340
AF2871-1340
Finish Black
Chrome
Bottom Type: Polyurethane Rubber
Filter O.D. 2" (50.80mm)
Element Height: 1-1/2" (38.10mm)
Flange ID: 5/8" (15.90mm)
Flange Style: Clamp on



Part No AF2271-1360
AF2871-1360
Finish Black
Chrome
Bottom Type: Polyurethane Rubber
Filter O.D. 2" (50.80mm)
Element Height: 1-1/2" (38.10mm)
Flange ID: 3/4" (19.05mm)
Flange Style: Clamp on



Part No AF2271-1370
AF2871-1370
Finish Black
Chrome
Bottom Type: Polyurethane Rubber
Filter O.D. 2" (50.80mm)
Element Height: 1-1/2" (38.10mm)
Flange ID: 1" (25.4mm)
Flange Style: Clamp on



Part No AF2271-1420
AF2871-1420
Finish Black
Chrome
Bottom Type: Polyurethane Rubber
Filter O.D. 3" (76.20mm)
Element Height: 2-1/4" (57.15mm)
Flange ID: 1" (25.4mm)
Flange Style: Clamp on



Part No AF2271-1390
AF2871-1390
Finish Black
Chrome
Bottom Type: Polyurethane Rubber
Filter O.D. 3" (76.20mm)
Element Height: 2-1/2" (63.5mm)
Flange ID: 1-1/4" (31.75mm)
Flange Style: Clamp on



Part No AF2271-1440
AF2871-1440
Finish Black
Chrome
Bottom Type: Polyurethane Rubber
Filter O.D. 3" (76.20mm)
Element Height: 2-1/2" (63.5mm)
Flange ID: 1-3/4" (34.9mm)
Flange Style: Clamp on



Part No AF2271-1460
AF2871-1460
Finish Black
Chrome
Bottom Type: Polyurethane Rubber
Filter O.D. 3" (76.20mm)
Element Height: 2-1/2" (63.5mm)
Flange ID: 1-3/4" (34.9mm)
Flange Style: Clamp on



Part No AF2271-1480
AF2871-1480
Finish Black
Chrome
Bottom Type: Polyurethane Rubber
Filter O.D. 3" (76.20mm)
Element Height: 2-1/2" (63.5mm)
Flange ID: 1-3/4" (34.9mm)
Flange Style: Clamp on



Part No AF2271-1513
AF2871-1513
Finish Black
Chrome
With Shield
Bottom Type: Polyurethane Rubber
Filter O.D. 3" (76.20mm)
Element Height: 2-1/2" (63.5mm)
Flange ID: 1-3/8" (34.9mm)
Flange Style: Clamp on



Part No AF2271-1514
AF2871-1514
Finish Black
Chrome
With Shield
Bottom Type: Polyurethane Rubber
Filter O.D. 3" (76.20mm)
Element Height: 2-1/2" (63.5mm)
Flange ID: 1-1/2" (38.10mm)
Flange Style: Clamp on

K&N®

THE WORLD'S BEST AIR FILTER



Rubber Base

Universal Clamp-On Style Racing Crankcase Vents

Flange	Filter	Filter	Rubber	Chrome
5/16"	1-3/8"	1-1/8"	—	KN62-2470
9/16"	1-3/8"	1-1/8"	—	KN62-2480
3/8"	2"	1-1/2"	—	KN62-1320
1/2"	2"	1-1/2"	—	KN62-1330
5/8"	2"	1-1/2"	—	KN62-1340
3/4"	1 3/8"	1 1/8"	62-1560	N/A
3/4"	2"	1-1/2"	—	KN62-1360
1"	2"	1-1/2"	—	KN62-1370
1"	3"	2-1/2"	KN62-1410	KN62-1420
1 1/4"	3"	2-1/2"	KN62-1380	KN62-1390
1 3/8"	3"	2-1/2"	KN62-1430	KN62-1440
1 1/2"	3"	2-1/2"	KN62-1450	KN62-1460
1 3/4"	3"	2-1/2"	KN62-1470	KN62-1480

STYLE 1:

Universal "Push-In" for all valve covers with 1.25" hole. NOTE: Not recommended to be used as the oil filler plug, as repeated removal will damage the filter.

Use Style 3 and a rubber grommet.

VENT FILTER SIZE

3" O.D. ; 2-1/2" H w/shield	KN62-1516
3" O.D. ; 2-1/2" H w/o shield	KN62-1490
2" O.D. ; 2-1/4" H w/o shield	KN62-1485



STYLE 2:

Universal "Clamp-On" for valve covers with existing vent tubes. All filters are 3" O.D. with deflector shields and 2-1/2" tall.

VENT FLANGE DIAMETER

1" I.D.	KN62-1511
1-1/4" I.D.	KN62-1512
1-3/8" I.D.	KN62-1513
1-1/2" I.D.	KN62-1514
1-3/4" I.D.	KN62-1515

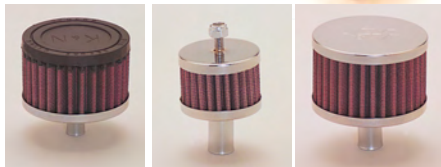


STYLE 3:

Zinc plated steel base plate with attached vent tube. Designed to push in to existing rubber breather grommets. All filters are 3" O.D. with deflector shields and 2-1/2" tall.

GROMMET SIZE

1/2" I.D.	KN62-1517
5/8" I.D.	KN62-1518
3/4" I.D.	KN62-1519
1" I.D.	KN62-1520



Crankcase Vent Filters

Crankcase Vent Filters with and without deflector shield. Designed for racing – Trick enough for show cars (not for use on emission controlled vehicles). Universal mounting, for a wide variety of valve covers. All shields and top plates are chrome plated for beauty and durability.

Steel Base

Crankcase Vents "One Piece Design" For Competition Use

Steel base crankcase vent filters have vent tubes swaged into base. One piece design with rubber or chrome top. Filters with mounting studs can be mounted remotely, but require vent hoses and clamps. Filters mounted direct can be pressed into rubber grommets in valve covers. All baseplates are chrome plated and tubes are zinc.

Vent	2" O.D.; 1-1/2" H	2" O.D.; 1-1/2" H	3" O.D.; 2" H
Diameter	Rubber Top P/N	Chrome Top w/Stud	P/N Chrome Top P/N
3/8" O.D.	KN62-1000	KN62-1090	
1/2" O.D.	KN62-1015 (2)		
1/2" O.D.	KN62-1010	KN62-1100	
5/8" O.D.	KN62-1020	KN62-1110	
5/8" O.D.	KN62-1300 (1)		
3/4" O.D.	KN62-1030	KN62-1120	KN62-1160
1" O.D.	KN62-1040	KN62-1130	KN62-1170

(1) SPECIAL 3" H FILTER (2) 2" Chrome Top.



Nylon reinforced valve cover adapters.

(requires a 1-1/2" I.D. flanged filter to be purchased separately)

Screws into Ford v/covers	KN85-1200
Screws into late GM v/covers	KN85-1210
Universal mount	KN85-1220

CAUTION: The use of these atmosphere vented breather systems are not recommended for computer controlled vehicles, as it will result in erratic operation and damage to the engine.

FUEL PUMP BLOCK OFF PLATES



BILLET FUEL PUMP BLOCK OFF PLATES

Aeroflow's fuel pump block-off plates are used to seal the opening in the engine block whenever a mechanical fuel pump is not used. Each plate includes stainless steel bolts.

Blue Red Black Silver

302 - 351 CLEVELAND

AF64-2020	AF64-2020R	AF64-2020BLK	AF64-2020S
-----------	------------	--------------	------------

BB CHEVY, CHRYSLER SB & BB, FORD SB WINDSOR

AF64-2027	AF64-2027R	AF64-2027BLK	AF64-2027S
-----------	------------	--------------	------------

SB CHEVY

AF64-2028	AF64-2028R	AF64-2028BLK	AF64-2028S
-----------	------------	--------------	------------

HOLDEN V8

AF64-2029	AF64-2029R	AF64-2029BLK	AF64-2029S
-----------	------------	--------------	------------

Fuel Pump Block Off Plate

Fits SB Chevy 283 - 400

RPCR6257	Ball milled Polished aluminium
RPCR2057	Chrome Steel Plain



Fuel Pump Block Off Plate

Fits BB Chevy 396 - 454 1-3/4 Centres

RPCR6258	Ball milled Polished aluminium
RPCR2058	Chrome Steel Plain
RPCR2058X	Die Cast Steel Finned

Fuel Pump Mounting Plate

Fits SB Chevy 283 - 400

RPCR2310	Chrome Steel Plain
----------	--------------------



Fuel Blocks Offs

Polished Billet aluminium
Includes Stainless Hardware

BS41820	Small Block Chrysler
BS41825	Big Block Chrysler
BS41120	Small Block Chevy
BS41220	Big Block Chevy
BS41620	Ford 289W - 390FE - 460B



CHROME PLATED FUEL PUMP BLOCK-OFF PLATES

The block-off plates are precision cut to cover stock fuel pump openings. Gasket included.

MG1515	Chevrolet 265 thru 400 cu. in.
MG1516	Chevrolet 396-427-454 cu. in. & most V6's & V8's with 134" bolt spacing
MG1517	Ford 351 and 400 cu. in. Cleveland only

CHROME PLATED FUEL PUMP MOUNTING PLATE

Mr. Gasket announces a fuel pump mounting plate to dress up the fuel pump area of your engine. This chrome plated mounting plate, for the 265-400 cu. in. Chevrolet small block engine, is ideal for mounting a stock OEM pump. The mounting plate is precision cut to cover the stock fuel pump opening and is complete with gasket.

MG1514	Chrome Plated Fuel Pump Mounting Plate
--------	--



Fuel Pump

Block-Off Plates

For use on Chevrolet V8s. Stamped with the handsome Chevrolet Bowtie, these plates are supplied with special non-asbestos gaskets.

PR141-210	Small Block Chev
PR141-211	Big Block Chev



SB Chev Finned Fuel Pump Block Off Plate

Finned SB Chev fuel pump block off aluminium polished, includes 4 stainless steel bolts.

OTB0SB



SB Ford Finned Fuel Pump Block Off Plate

Ford 302-351c fuel pump block off finned aluminium polished.

OTB0FC



Flat Head Ford Finned Fuel Pump Block Off Plate

Flathead fuel pump block off finned alum polished. Includes stainless steel bolts

OTB0FHPS



DISTRIBUTOR CLAMPS



BILLET DISTRIBUTOR HOLD DOWN CLAMP

Aeroflow's distributor hold down brackets prevent your V8 distributor from twisting at high RPM.

SBC / BB CHEVY

AF64-2032	Blue
AF64-2032R	Red
AF64-2032BLK	Black
AF64-2032S	Silver
AF64-2032C	Chrome

SB FORD WINDSOR & CLEVELAND (SMALL)

AF64-2035	Blue
AF64-2035R	Red
AF64-2035BLK	Black
AF64-2035S	Silver
AF64-2035C	Chrome

SB FORD WINDSOR & CLEVELAND (LARGE)

AF64-2093	Blue
AF64-2093R	Red
AF64-2093BLK	Black
AF64-2093S	Silver
AF64-2093C	Chrome

HOLDEN V8

AF64-2038	Blue
AF64-2038R	Red
AF64-2038BLK	Black
AF64-2038S	Silver
AF64-2038C	Chrome



Heavy-Duty Machined Aluminum.

Fits Chevrolet, S/B, V6/90".
B/B. Includes Clamp, Stainless Steel Stud, Nut and Washer.

PR66985	Billet Look
PR66986	Blue
PR66987	Red



Chrome Distributor Clamps

Chrome plated steel distributor clamps. Includes Clamp, Stud, Nut and Washer.

PR66247	Chrysler S/B
PR66248	Ford



MR GASKET STEEL

DISTRIBUTOR CLAMP

SB Chrysler 273-360
MG2503





Billet Distributor Clamp

Precision machined from 6061-T6 billet aluminum and polished to a mirror finish or black anodized. Features a unique ball seat pivot design for positive lock down and worry free adjustment without marring. For small and big block Chevrolet® motors. Stainless hardware included.

BS65920 Billet Distributor Clamp

BSBLK65920 Billet Distributor Clamp – Black Anodized



DISTRIBUTOR HOLD

DOWN CLAMPS

- Extra-thick and heavy-duty to ensure adequate retention of distributor housing
 - Stud mounted to eliminate thread wear in intake manifold
 - Slotted for quick distributor removal
 - Includes stud, washer, nut
- Distributor Hold Down Clamp, All V8 and 90° V6
MO26200 Chevrolet engines. Gold Iridite Steel.

DISTRIBUTOR CLAMPS

MSD's Billet Distributor Hold Down Clamps are strong enough to keep the timing locked in place whether you are using an MSD Billet Distributor or Pro Mag. The MSD Hold Down Clamp is CNC machined from steel and fits all MSD Pro-Billet Chevrolet distributors and the Pro Mags. Each clamp includes the mounting stud, lock washer and nut. MSD Billet Hold Down Clamps:

MSD8110 Chevrolet

MSD8010 Ford



RPC4455

RPC4116

RPC4629

RPC5116

Chrome Steel Distributor Clamps

Includes Hold Down Stud

RPC4116 Chevy 1963 and up V8 OEM STYLE

RPC9126 Chevy 1963 and up V8 Competition Style

RPC5116 Chevy 1963 and up V8 Billet Aluminium

RPC4455 Ford all OEM style

RPC4629 Ford FE Competition Style

RPC4117 Pontiac OEM Style

VACUUM ADVANCE COVERS



Vacuum Advance Covers

Mounts over existing unit
BS88120 Polished Aluminium



THERMOSTAT HOUSINGS / WATER NECKS



CHROME STEEL WATER NECKS

Chevrolet V8 1955-64 Gasket RPC4788
Chevrolet V8 1955-64 O-Ring RPC9228
Chevrolet V8 1966-75 RPC4789
Chevrolet V8 1966-75 - 1/2" NPT Port RPC9468
Chevrolet SB/BB Chevy V8 Straight O-Ring RPC9647
Chevrolet V8 Straight Up O-Ring Style RPC9647
Chrysler V8 1964-on RPC4987
Ford 289-351 Windsor RPC4790
Ford 289-351 Windsor RPC9440
Ford 289-351 Cleveland O-Ring Style RPC9331
Ford 429-460 RPC9415
Oldsmobile 330-455 RPC9403
Pontiac V8 1964-1979 RPC9230
Replacement O-ring x 2 RPC9243

ALUMINIUM SWIVEL WATER NECKS

- Swivel Type
 - O-Ring seal
 - Suits Chev SB & BB
- 15 Degree - Polished RPC6015
15 Degree - Chrome Plated RPC6015C
Straight - Chrome Plated RPC6002C
40 Degree - Polished RPC6003BC
45 Degree - Polished RPC6003
45 Degree - Chrome Plated RPC6003C
90 Degree - Polished RPC6009
90 Degree - Chrome Plated RPC6009C
Replacement O-Rings (Pair) RPC6004



ALUMINIUM WATER NECKS

Chevrolet V8 1955-64 O-Ring Style - Polished RPC6228
Chevrolet V8 1966-75 O-Ring Style - Polished RPC6229
Chevrolet V8 Straight Up O-Ring Style - Chrome RPC6002C



Water Outlets

Stock replacement style cast aluminium water outlets for Holden V6 and V8 engines.

Application

Holden 6cyl EH-HJ Red Motor
Holden V6, VN Series I to 11/1990
Holden V6, VN Series II – VR w/out ABS
Holden V6, VN Series II – VR with ABS
Holden V8, 253-308 Single Bypass – Natural
Holden V8, 253-308 Single Bypass – Polished

Part No.

KCW07
KCW043
KCW069
KCW079
KCW08NPN
KCW08NPP



BILLET SWIVEL THERMOSTAT HOUSINGS 302 - 351 CLEVELAND (NON Swivel)

with internal -16 ORB

AF64-2021 Blue
AF64-2021BLK Black
AF64-2021S Silver
AF64-2021R Red
AF64-2021C Chrome
AF59-2021 Replacement O-Ring & Bolts



302 - 351 Cleveland (90°) (Swivel)

AF64-2039 Blue
AF64-2039BLK Black
AF64-2039S Silver
AF64-2039R Red
AF64-2039C Chrome
AF59-2039 Replacement O-Ring & Bolts



SUITS FORD FALCON 6 CYL (EF EL BA BF FG) (Swivel)

AF64-4036 Blue
AF64-4036BLK Black
AF64-4036S Silver
AF64-4036R Red
AF64-4036C Chrome
AF59-4036 Replacement O-Ring & Bolts



SB FORD WINDSOR (NON Swivel)

AF64-2033 Blue
AF64-2033BLK Black
AF64-2033S Silver
AF64-2033R Red
AF64-2033C Chrome
AF59-2033 Replacement O-Ring & Bolts



SUITS BB FORD 429 - 460 (Swivel)

AF64-4037 Blue
AF64-4037BLK Black
AF64-4037S Silver
AF64-4037R Red
AF64-4037C Chrome
AF59-4037 Replacement O-Ring & Bolts



SB/BB CHEVY (Swivel)

AF64-2034 Blue
AF64-2034BLK Black
AF64-2034S Silver
AF64-2034R Red
AF64-2034C Chrome
AF59-2034 Replacement O-Ring & Bolts



308 HOLDEN (Swivel)

AF64-2022 Blue
AF64-2022BLK Black
AF64-2022S Silver
AF64-2022R Red
AF64-2022C Chrome
AF59-2022 Replacement O-Ring & Bolts



308 HOLDEN (no heater) (Swivel)

AF64-2056 Blue
AF64-2056BLK Black
AF64-2056S Silver
AF64-2056R Red
AF64-2056C Chrome
AF59-2056 Replacement O-Ring & Bolts



HOLDEN LS1/LS2 SERIES (Swivel)

Housing is designed to suit LS2 thermostat

AF64-2092 Blue
AF64-2092BLK Black
AF64-2092S Silver
AF64-2092R Red
AF64-2092C Chrome
AF59-2092 Replacement O-Ring & Bolts



HOLDEN LS3 (Swivel)

Housing is designed to suit LS2 thermostat

AF64-2115 Blue
AF64-2115BLK Black
AF64-2115S Silver
AF64-2115R Red
AF64-2115C Chrome
AF59-2115 Replacement O-Ring & Bolts



SUITS NISSAN RB (NON Swivel)

AF64-4029 Blue
AF64-4029BLK Black
AF64-4029S Silver
AF64-4029R Red
AF64-4029C Chrome



SUITS NISSAN RB30

TOP WATER HOUSING (NON Swivel)

AF64-4030 Blue
AF64-4030BLK Black
AF64-4030S Silver
AF64-4030R Red
AF64-4030C Chrome



SUITS MAZDA ROTARY 2 Bolt (Swivel)

(requires slight modification to bolt holes)

AF64-2039 Blue
AF64-2039BLK Black
AF64-2039S Silver
AF64-2039R Red
AF64-2039C Chrome
AF59-2039 Replacement O-Ring & Bolts



WATER NECK SPACER

Aeroflow's Chev water neck spacer kit is the perfect solution for allowing an extra auxiliary port of coolant, can be used for many applications including plumbing coolant to a turbo charger, extra coolant flow from rear of heads or simply connecting your heater in a conversion! Available in silver or black anodised finishes.

Part No	Colour	Description
AF64-4051	Silver	Spacer with 2 x -80RB female ports
AF64-4051BLK	Black	Spacer with 2 x -80RB female ports



LS CROSS-OVER ADAPTERS

Aeroflow offer -4AN water cross-over adapter's and allow coolant to be pulled away from hot spots in your cylinder heads to suit LS1, LS6, LS2, LS7, LM7, LQ9 engines. These great little adapters are available in black or silver anodised and come complete with O-ring and mounting bolt ready to install and are sold separately. Aeroflow water cross over adapters are especially needed for turbocharged or supercharged street driven / endurance applications and allow many ways to plumb a simple cross-over line or header tank to allowing the engine to run more efficient while allowing the coolant system to hold more coolant. Installing these water cross-over adapters in all 4 corners of the engine have been proven to decrease detonation in number 7 & 8 cylinders especially and are a great improvement over the standard steam vent plumbing.

AF64-2186 Silver LS cross-over adapters
AF64-2186BLK Black LS cross-over adapters



Billet Specialties

Water Necks

Cooling system components from Billet Specialties feature high quality precision machining, industry leading mirror finish polish and stainless fasteners. Each of our engine components are engineered to do more than look good ... they perform! Billet Specialties thermostat housings are precision machined from 6061-T6 billet aluminium and polished to a mirror finish. Fits small and big block Chevrolet® engines.

Product Features - Dual Buna N® O-rings for a positive seal eliminating the need for a gasket or sealant - Stainless steel mounting hardware included.

BS90120*	SB/BB Chevy - Straight Up
BS90220*	SB/BB Chevy - 0 Degree
BS90320*	SB/BB Chevy - 15 Degree
BS90420*	SB/BB Chevy - 45 Degree
BS90620*	S/B FORD 0 Degree
BS90720	B/B FORD 429-460 - 0 Degree
BS90730	B/B FORD FE - 0 Degree
BS90820	SB/BB Chrysler & Hemi to 1978 - 0 Degree

* Available black anodized, add BLK to part number ie: BSBLK90120





MEZIERE Inline Thermostat Housing, 1.50" Hose to 1.50" Hose

You can use this assembly to install a thermostat inline in your upper radiator hose. A variety of connection options and thermostat rates are available. **MZWN0072**



Ford 302 - 351 Cleveland Thermostat Housings

Straight Chrome water neck Chrome Steel **MG2663** 302 - 351 Cleveland



Ford 302 - 351 Windsor Thermostat Housings

Chrome water necks for Windsor engines. Available in 45° or 90° types for early and late engines.

MG2662 289-302-351W Early 45° Style
MG9713 302-351W 1979-1995 90° Style

WATER OUTLET RESTRICTOR PLATE KIT

By inserting one of these restrictor plates in place of the thermostat, you can adjust the flow of water to the radiator. The kit contains three different restrictor plates: one each 5/8", 3/4" and 1" I.D. holes x 2 3/16" diameter. Fits Chevrolet, Ford & Holden V8.

Water outlet restrictor plates **MG6126**



Water Necks

The bottom-line for water necks is resistance to leakage. Our waternecks are manufactured with especially flat sealing surfaces, extra thick bases, and an O-ring gasket where applicable (Chevrolet 66209, 66210, and Pontiac 66212). They are highly polished and thickly chrome plated for a lasting finish.

Easily installed in place of OEM parts. Supplied with bolts, gaskets or O-rings.

PR66207 All Mopar, Chevy V8 and 90-Degree V6 (must use Mopar thermostat) straight up.
PR66211 Ford 289, 302, and 351W '65-'75

PR66209 Chevy V8 '55-'65, Chevy II V8 '64, and Corvette '56-'63
PR66210 Chevy, Camaro, and Chevelle V8s '66-'75

PR66212 Pontiac V8 '64-'81
PR66610 Replacement O-Ring



CHROME STEEL WATER NECK

With hole to direct mount temperature gauge **MNMP9468**



Offenhauser Top Water Outlet

Fits Flat head manifolds
OFF3496 Top Water Outlet



Flathead Ford Water Neck

Hot rod style bolt-on aluminum water neck for the 1949-53 Ford Flathead V8.

1949-53 Flathead Water Neck
V18A-8592-HR



Offset Thermostat Housing adapter

This polished aluminum adapter offsets the thermostat to right side of manifold. Used on 144/174 blower kits. Includes O-Ring and mounting bolts. Will NOT work on Weiand 142, 177, or 256 blowers.

Chev Thermostat Offset Adapter



Peterson Swivel Water Necks

Necks swivel 360° for exact hose alignment. Viton seals are used internally and the flange is O-Ring sealed. Features hard coat anodizing for improved wear and a secondary locking pin for fitting retention. Proven in NASCAR Winston Cup.

Chev Swivel Water Neck -16AN
Chev Swivel Water Neck -20AN



PFS10-2216
PFS10-2220



Chev Filler Neck with AN Fitting

Blue anodized aluminum -16AN fitting for use with steel braid reinforced upper radiator hose. Fits Small Block, Big Block and 90° V6 Chevy Intake Manifolds.

Water Outlet Filler Neck, -16 AN fitting **MO63460**



Chev Filler Neck with AN Fitting and NPT Ports

Blue anodized aluminum. Includes two 3/8" NPT female ports to plumb water to cylinder head for additional cooling and a -16AN fitting for use with steel braid reinforced upper radiator hose. Fits Small Block, Big Block and 90° V6 Chevy Intake Manifolds.

Water Outlet Filler Neck, -16AN with 2 x 3/8" NPT ports **MO63461**



Ford Windsor Filler Neck

with AN Fitting

Blue anodized aluminum with -16AN fitting for use with steel braid reinforced upper radiator hose. Includes gasket. Fits Ford Windsor Engines.

Water Outlet Filler Neck, Ford, -16 AN Fitting **MO63455**



Bolt-On Filler Neck

Blue anodized aluminum. Accepts standard-size radiator cap (not included). Excellent replacement part for Moroso Filler Neck Kits. 100% leak tested.

Stamped Aluminum Filler Neck, Bolt-On **MO63465**



Billet Aluminum Bolt-On Filler Neck

Made from 6061-T6 billet aluminum. Easily mounts to any Big Block or Small Block Chevy intake manifold, and can be used in all racing and street- performance applications where a heavy-duty filler neck is required. Includes screw-in 1/8" NPT hose fitting for expansion tanks, and accepts standard-size radiator cap (not included).

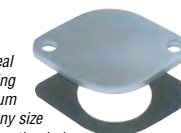
Billet Aluminum Filler Neck, Bolt-On **MO63466**



Water Neck Block-Off Plate

This 1/4" aluminum plate provides an ideal base to weld-your-own radiator hose fitting to the intake manifold. Untreated aluminum makes it easy to drill opening and weld any size fitting of your choice. Two pre-drilled mounting holes ensure a perfect fit to the intake manifold. Perfect for racing and custom applications.

Water Neck Block-off Plate, Chevrolet **MO63471**



Filler Neck

Fits: Ford 4.6/5.4L engines

- Allows Mod Motor Racers to upgrade existing upper radiator hose
- Billet Aluminum Water Neck Outlet with -16AN Fitting
- Anodized Black • Includes O-ring

Filler Neck **MO63456**



THERMOSTATS FOR LS1

Available for all new style LS series engine that have a separate thermostat and water neck. These thermostats are available in 160, 180 and 195°F temperatures to suit any application. Mr. Gasket's 2005 Pontiac GTO test car gained 5 hp with the 180 degree unit.

Description

LS1 late thermostat 160°F (71°C)

LS1 late thermostat 180°F (82°C)

LS1 late thermostat 195°F (90°C)



Part No.

MG6367

MG6368

MG6369



MILODON WATER OUTLET RESTRICTORS

In race applications these Water Outlet Restrictors, on Chevys and Fords, replace the thermostat. They work to slow the flow of coolant through the block and radiator which allows more heat to be absorbed from the block and more heat to be released through the radiator. In cases where the engine has excess cooling capacity, as in an alcohol burning engine, a higher amount of restriction is required than the thermostat, while open, can provide. This kit contains restrictors with 1", 3/4" and 5/8" openings to allow tailoring to your particular application.

WATER OUTLET RESTRICTOR

Chevy, Small & Big Block, Ford & Holden (except pre '67 390-428)

M116420



MILODON HIGH FLOW THERMOSTATS

These High Flow Thermostats greatly aid the proper functioning of a high performance cooling system. They are engineered to warm the engine to a proper operating temperature without making it run hot enough to lose power. Also the "Balanced Sleeve" design is highly recommended for use with High Volume water pumps. With other thermostat designs, the increased flow generated by High Volume water pumps can actually attempt to hold the thermostat closed. The "Balanced Sleeve" design equals the pressure exerted on the thermostat allowing its operation to be solely regulated by coolant temperature.

Application

Chevy, Ford & Holden, 160° F (71°C)

Chevy, Ford & Holden, 180° F (82°C)

Chrysler & Dodge, 160° F (71°C)

Chrysler & Dodge, 180° F (82°C)

Part No.

M116400

M116401

M116405

M116406



WATER OUTLET RESTRICTOR KIT

- Restricting coolant flow leaving the engine lets you control the amount of heat absorbed by the coolant
- Red, gold and blue anodized aluminum restrictor plates are mounted under the water outlet on the intake manifold
- Kit consists of three restrictor plates with 5/8", 3/4" and 1" I.D. holes for optimum coolant flow, 2-1/8" O.D.

Water Outlet Restrictor Kit.

GM V8, GM V6, Ford 260-302, 351W **MO63440**



TUFF STUFF HIGH FLOW THERMOSTATS

50 percent increase in coolant flow!

The increased coolant flow will reduce the delay in engine warm-up times, allows trapped air in the cooling system to escape and stabilizes the pressure of the cooling system overall. These thermostats also have a bypass valve that allows a small amount of coolant to circulate before fully opening.

Description

GM, Ford, AMC, Jeep, Holden 160°

GM, Ford, AMC, Jeep, Holden 180°

GM, Ford, AMC, Jeep, Holden 195°

1953-1980 Mopar 180°

Part No.

TUF900160

TUF900180

TUF900195

TUF910180



HI-FLOW THERMOSTATS

High flow design that resists large variations of coolant pressure at high rpm. Fully opens at correct temperature consistently regardless of engine rpm. Perfect for high performance street, drag race, and oval track. Copper & brass construction - resists corrosion. Suitable for GM Holden, Chevrolet, Ford and AMC.

AF49-1043

71°C (160°F) hi-flow thermostat

AF49-1044

82°C (180°F) hi-flow thermostat



THERMOSTATS & ACCESSORIES

MR GASKET THERMOSTATS

These high performance thermostats are designed to resist large variations in coolant pressures that occur at high RPM's where coolant temperature and coolant pressure fight for control of the thermostat keeping it from opening at it's designated temperature. The balanced HP Thermostat features all brass and copper construction, and opens at the right temperature regardless of engine RPM.

Chev, Ford & Holden, 160°F (71°C)

Chev, Ford & Holden, 180°F (82°C)

Chev, Ford & Holden, 195°F (90°C)

LS1, 180°F (82°C)

Chrysler & Dodge, 160°F (71°C)

Chrysler & Dodge, 180°F (82°C)

Thermostat Gasket with rubber seal H/D



MG4363

MG4364

MG4365

MG6368

MG4366

MG4367

MG738G

FINNED OIL FILTER COVERS



Finned Oil Filter Cover

Cast from aluminum and highly polished, this slip-on oil filter cover is designed to match our other cast aluminum accessories.

SO172-925-17480





MOON FINNED ALUMINUM REMOTE OIL FILTER

This finned aluminum remote oil filter has machined top with cast canister and use spin-on oil filter. Canister is designed, so you can use in conjunction with forcefield magnet that will pick any metal particles. Bolts on to firewall or framerail. Line kits available separately.
MNMPF200

Chrome Oil Filter Covers

Chrome plated steel oil filter cover slides over existing oil filter. 3-11/16" diameter suits most large oil filters. Available in two lengths.

Chrome Oil Filter Cover, 4-9/32" Tall

RPCR1070

Chrome Oil Filter Cover, 5-3/16" Tall

RPCR1067



CHROME STEEL DIPSTICKS

- Aluminium Handle
- Chrome Steel Dipstick & Tube

Engine Dipsticks

Chev Small Block 1955-79
Chev Small Block 1955-79 (19")
Chev Small Block 1980-82 (23")
Chev Small Block 1982-85 (24.5")
Chev Big Block 1965-90
Chrysler 318-360
Chrysler 383-440
Ford 289-302 Windsor
Ford 351 Windsor
Ford 351 Cleveland

Part No.

RPCR4957
RPCR4957
RPCR4920
RPCR4921
RPCR4958
RPCR4924
RPCR4925
RPCR4921
RPCR4922
RPCR4923

BILLET HANDLE DIPSTICKS

- Billet Aluminium Handle
- Chrome Steel Dipstick & Tube

Engine Dipsticks

Ford 289-302 Windsor

Part No.

RPCR9221BA

FLEXIBLE BRAIDED DIPSTICKS

- Aluminium Handle
- Braided Housing
- Stainless Steel Dipstick

Engine Dipsticks

Chev Small Block 1955-79
Chev Small Block 1986-on
Chev Big Block 1965-90

Part No.

RPCR5002
RPCR5001
RPCR5003

BILLET ALUMINIUM DIPSTICK

- Billet aluminium handle with steel dipstick
- Tube not included
- Dipstick is 11-1/2" long.

Chev Small Block 1955-79 **RPCR6060**

ENGINE DIPSTICKS

Aeroflow's Flexible Engine Dipsticks are 308 stainless steel braided covering over a hard-wearing high quality PTFE liner. The handle and ends are made from 6061-T6 then hand polished and chrome plated for a superior finish. A double O-ring seal keeps dipstick secured in tube and prevents crankcase gasses from escaping. These not only look great but the flexible inner dipstick is marked to give accurate oil level readings.

Suits Holden V8 253-308

AF64-2105 Chrome
AF64-2105BLK Black

Suits SBC, late model, drivers side.

AF64-2109 Chrome
AF64-2109BLK Black

Suits SBC, early model, passengers side.

AF64-2110 Chrome
AF64-2110BLK Black

Suits Ford 302 - 351C

AF64-2112 Chrome
AF64-2112BLK Black

Suits LS Series Chevy

(block mount)
AF64-2111 Chrome
AF64-2111BLK Black

COIL COVERS



HEI Finned Alum Distributor Cover.

Finned aluminium cover for GM HEI distributor, mounts easily using 1/4-20 button head stainless bolts (provided).

OTEHEI

FINNED COIL COVER

Firewall mount coil cover polished finned. Fits any coil up to 2 1/2 inches in diameter.

OTECCF

COVER COIL SLIP ON FINNED

Slip on finned coil cover polished finned. Fits any coil up to 2 1/2 inches in diameter.

OTECCS



Regulator Finned Cover

Regulator finned cover polished aluminium. Inside dimensions 3 x 4 inches

OTEREG



PROFORM FLEX DIPSTICK

This flexible braided stainless steel dipstick is the perfect addition to your Chev or Ford engine. Adjustable mounting tab provides flexibility during installation.

PR66134

PR68056

PR68052

SB Chev Flex Dipstick PRE-1979

SB Ford 289-302-351W

(Push into Timing Cover)

Ford 289-302-351W-429-460 Engines
(5/8"-18 Thread Screw-in Style)

DIPSTICKS ENGINE

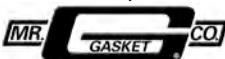


Billet Dipstick

Billet Specialties dipstick fits directly into the block on small block Chevrolet® motors up to 1979 and replaces the factory driver side dipstick tube for a clean look. The Ford dipstick is for use with Tru-Trac systems on Pre 1979 Ford Small Blocks.

BS40120 S/B Chev pre 79 Direct into block.

BS40150 S/B Ford pre 79 For use with Tru-Trac



Oil Dip-Sticks

Dress up your engine with a chrome plated dipstick and tube from Mr. Gasket. Similar in design to stock, OEM units, only simple hand tools are required for installation.

MG6235

Chev SB, block mount, 65-79

MG6237

Chev SB, RHS, 80-82

MG6238

Chev SB, 82-85 Camaro/Firebird

MG6236

Chev BB, pan mount

MG6235BP

Chev SB, Block Mount - Black

MG6920

Ford SB, (260-302)

MG6921

Ford 351 Windsor

MG6922

Ford 351 Cleveland

MG6923

Chrysler SB 273-360.

MG6924

Chrysler BB 383-440

PROFORM ENGINE DIPSTICK & TUBE

BB Chev MK4 66-90

PR66117



MILODON ENGINE DIPSTICKS

Application

Ford 302-351 Cleveland
Ford 302-351W / 429-460 (In Oil Pan)
Chrysler 392 Early Hemi - Rear Sump Pan

Part No.

M122031
M122040
M122066

UNIVERSAL STAINLESS STEEL ENGINE DIPSTICK

For use where you need an engine dipstick in a custom application. Simply drill a 13/16" hole, weld in the supplied weld bung and you are set. Stainless steel dipstick tube assembly screws into the bung welded in the pan and seals with a copper gasket. Tube assembly attaches to a header bolt and is 16" long

Part No.

M122080

Ford 429-460 Dipstick

Unique sleek design, CNC machined from 304 stainless steel resist corrosion and stay bright. O-ring sealed against water & dirt. Fits pre-1973 Ford 429-460 9in timing cover).

Description

Ford 429-460 Dipstick (in timing cover)

Part No.

M122035



5R Racing Chrome Dipstick

5RDS-308

308 CHROME DIPSTICK & TUBE

GM LS Series Oil Pan Dipstick Tube

Suit LS1 in Camaro

GM12551577 - Engine Oil Level Tube only

GM12625031

LS3 Dipstick Tube Suit H0302-1
(Use With GM12634547)

GM12634547

LS3 Dipstick Only Suit H0302-1
(Use With GM12625031)



Dagger Dip Stick Handle

Dagger dip stick handle polished alum. Attaches with stainless set screw.

OTEDDIP

Iron Cross Dip Stick Handle

Aluminium.

Attaches with stainless set screw

OTEMCDIP



Flexible Engine Dipsticks

Flexible engine dipstick designed with machined aluminum handle to coordinate with Lokar's Flexible Transmission Dipstick. Slim design allows mounting inside headers. Designed for use with factory or Sanderson cast manifolds. Applications available for GM and Ford. E-Z read stainless stick for accurate measure of engine oil.



LOKAR Flexible Engine Dipsticks

Engine Make	Year	Part No.
Chevy		
Small Block Chevy	1980 & Later	LK-ED-5001
Small Block Chevy	1979 & Earlier	LK-ED-5002
Dart SBC SHP (Special High Performance Block)		LK-ED-5018
GM LS1	1997 & Later	LK-ED-5008
GM Vortec Ramjet 350 Not Applicable.		LK-ED-5009
Big Block Chev	396-454	LK-ED-5003
Ford		
302 Ford	1986 to 1995 5.0	LK-ED-5004
351 Ford	Screw into Pan Style	LK-ED-5005
Early 289-302	Ford 1962-1969	LK-ED-5010
	Thru timing chain cover	
SBF 302 5.0L Crate Engine Only - Push into Pan		LK-ED-5013
FORD 351c 1970 XW To 1984 XE (In To Block)		LK-ED-5023
Ford Flathead	1937 - 53 Flat head V8	LK-ED-5016
Holden		
253-308 Holden 1968 HT -1984 WB		LK-ED-5024
253-304-308 Holden 1979 VC -1998 VT		LK-ED-5028

Machined Aluminum

Engine Dipstick Small Block Chevy

Machined Aluminum and Stainless Dipstick for pre-1980 Small Block Chevy. Application is straight into the engine block - no tube necessary. Dipstick seals at bottom of handle with o-ring. Machined aluminum handle designed to coordinate with Lokar Flexible Transmission Dipstick.

Engine Make	Year	Part No.
Small Block Chevy	Pre-1980 (No Tube)	LK-ED-5000ESB



LOKAR BLACK Flexible Engine Dipsticks

Engine	Make/Year	Part No.
Chevy		
Small Block Chevy	1980 & Later	LK-XED-5001
Small Block Chevy	1979 & Earlier	LK-XED-5002
Dart SBC SHP (SHP Block)		LK-XED-5018
Big Block Chev	396-454	LK-XED-5003
GM LS1	1997 & Later	LK-XED-5008
Holden		
253-308 Holden 1968 HT -1984 WB		LK-XED-5024
253-304-308 Holden 1979 VC -1998 VT		LK-XED-5028
Ford		
SBF 302w 5.0L Engine Only - Push into Pan		LK-XED-5013
302w Ford 1986 to 1995 5.0		LK-XED-5004
351w Ford Screw into Pan Style		LK-XED-5005
FORD 351c 1970 XW To 1984 XE (In To Block)		LK-XED-5023
Early 289-302 Ford 1962-1969		LK-XED-5010
	Thru timing chain cover	
Ford Flathead 1937 - 53 Flat head V8		LK-XED-5016

Big Block Flexible

Engine Dipsticks

Flexible engine dipstick designed with machined aluminum handle to coordinate with Lokar Flexible Transmission Dipstick. Slim design allows mounting inside headers. Designed for clearance with block hugger headers. E-Z read stainless stick for accurate measure of engine oil.



Engine Make	Part No.
Chevy Big Block	LK-ED-5003
502 Big Block Chevy	LK-ED-5006
Ford Big Block 460 & 514 (Crate Motors Only)	LK-ED-5011
Ford Big Block FE 390 - 428	LK-ED-5012



LOKAR Anchor-Tight®

Locking Flexible Engine Dipstick
NHRA accepted for use in all categories of competition!
Features: • No filler tube needed • Locking mechanism eliminates expulsion of dipstick handle under trans pressure
• Bolted in sealed pan fitting • Made from 6061 aluminum
• Teflon-lined stainless braided outer housing
• Flexible inner dipstick measuring cable

Anchor-Tight® Locking Engine Dipsticks

Universal 1/4 Anchor Mount Locking Dipstick	LK-1220174
Ford 351c anchor-Tight Locking Dipstick	LK-1220254
Chevy Big Block Black Push into Pan	LK-X122027



UNIVERSAL OIL PAN DIPSTICK STAINLESS STEEL

FLEX TUBE

Fits: Moroso Oil Pans with 1/4" NPT dipstick bung
• Oil Pan Dipstick features braided stainless flex tube with 1/4" NPT fitting and a machined aluminium handle
• Existing "full" and "fill" dipstick marks can be used as-is, or new marks can be added to indicate desired oil level
• Flexible tube and universal mounting tab can be bent or modified to accommodate engine compartment clearances and mounting location
• A rubber capping seal keeps the dipstick secure in tube and prevents crankcase gasses from escaping
• O-Ring seal keeps dipstick secured and sealed
• Dimensions: exposed portion of dipstick is 14" long, overall 20-3/4" long

MO25971 Universal Stainless Steel Pan Dipstick, Flex Tube.



UNIVERSAL LOCKING ENGINE DIPSTICK

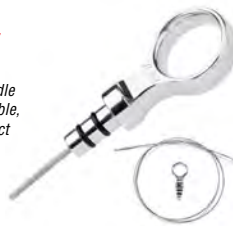
• Efficient twist-lock design eliminates oil leakage, blowing out of handle and prevents crankcase gasses from escaping
• In Dyno testing, engines equipped with our twist-lock dipstick pulled more vacuum than engines equipped with standard, non-locking dipstick
• High temperature nylon handle dissipates heat for checking oil level on hot engines
• Flexible stick zinc-plated, bendable outer tube adjustable clamp
• 1/4" NPT steel, weld-in fitting supplied for pans that do not already have that provision
• Existing "full" and "fill" dipstick marks can be used as-is, or new marks can be added to indicate desired oil level
• Tube and universal mounting tab can be bent or modified to accommodate engine compartment clearances and mounting location
• Dimensions: overall length, including exposed portion of dipstick - 24"
MO25973

LOKAR DIRECT MOUNT

BILLET DIPSTICK

With its billet aluminium handle and E-Z read flexible inner cable, Lokar's Billet Aluminium Direct Mount LS Series and Coyote Gauge to Fit Engine Dipsticks are ideal replacements for factory dipsticks and handles. Designed to mount directly into the factory dipstick tube, the Direct Mount LS Series and Coyote Gauge to Fit Engine Dipsticks feature billet aluminium handles and a U-Cut-To-Fit, E-Z read flexible inner cables for accurate engine oil measurement.

Application	HI-TECH	BLACK
LS Series Engine	LK-ED-5000LS1	LK-XED-5000LS1
Ford Coyote Engine	LK-ED-5000COY	LK-XED-5000COY



BRACKETS



Proform Alternator Brackets

Made of heavy steel. Includes upper and lower brackets. Engineered to fit applications with a distance of 4" between the centre of the hole in the intake and the front of the mounting node on the water pump. For different distances due to water pump variations, minor modifications or shimming of the bracket may be necessary.
PR141-402 Alternator Bracket



Chevrolet Small Block thru '68.

PR66114	Short Water Pump & Headers
PR66661	Side-mount with Headers
PR66115	Universal Slotted Arm
PR66179	Universal Cut-To-Size Spacer

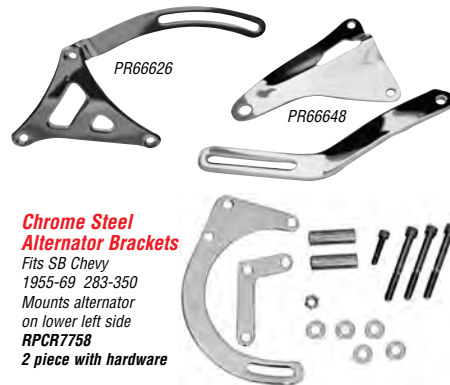
Chevrolet Small Block '69 to date, except Corvette.

All kits below include upper and lower brackets.
PR66177 Top Bracket Bolts to Water Neck, OEM Style

Other applications.

All kits below include upper and lower brackets.

PR66625	Chrysler S/B V8
PR66626	Chrysler B/B V8
PR66648	Ford S/B



Chrome Steel Alternator Brackets

Fits SB Chevy

1955-69 283-350

Mounts alternator

on lower left side

RPCR7758

2 piece with hardware

RPCR9315 Top OEM Short W/P

Fits SB Chevy 1965-68 283-350

RPCR9316 Top OEM Long W/P

Fits SB Chevy 1969-75 283-350

Top of bracket bolts to water neck

RPCR9317 Top OEM Long W/P

Fits SB Chevy 1976-86 305-350

Top of bracket bolts to intake manifold

RPCR9318 Top OEM Long W/P

Fits BB Chevy 1969-90 396-454

Bracket bolts to manifold or head

RPCR9321 Top Custom Long W/P

Fits SB Chevy 1969-75 305-350

Bracket bolts to intake manifold

RPCR9008 Header Bracket Short W/P

Fits SB Chevy 1955-69 283-350

Use with RPCR9254

RPCR9254 Header Bracket Short W/P

Fits SB Chevy 1955-69 283-350

Use with RPCR9008

RPCR9455 OEM Top & Bottom

Fits Ford 1965-73 289-302 Windsor

RPCR9079 Universal Alternator Bracket Arm

1" wide x 14" long with 4" slot

RPCR9502 - BBC Low alternator bracket chrome suit short pump.

RPCR9638 - BBC Bottom alt bracket, OEM long W/P.

Chrysler Alternator Brackets

RPCR9456 - SB Chrysler alternator bracket chrome.

RPCR9457 - BB Chrysler alternator bracket chrome.



Aluminium "Outward Mount" Alternator Brackets

Mounting Hardware included



Small Block Chevy

RPCR6405	Short Water Pump - Chrome
RPCR6402	Long Water Pump - Chrome

Big Block Chevy

RPCR6411	Short Water Pump - Chrome
RPCR6408	Long Water Pump - Chrome

Ford 289-302 Windsor

RPCR6413	Polished
RPCR6414	Chrome

Ford 351 Windsor

RPCR6416	Polished
RPCR6417	Chrome

Aluminium A/C Compressor Brackets

Mounting Hardware Included

Small Block Chevy

RPCR6420	Short Water Pump - Polished
----------	-----------------------------

Big Block Chevy

RPCR6423	Short Water Pump - Polished
----------	-----------------------------



CHROME ALTERNATOR BRACKETS

Part No	Colour	description
S/B CHEVY		
AF64-4010	Chrome	Low mount to suit long water pump
AF64-4015	Chrome	Low mount to suit short water pump
B/B CHEVY		
AF64-4016	Chrome	Low mount to suit long water pump
AF64-4017	Chrome	Low mount to suit short water pump



High mount

Mid mount

BILLET POWER

STEERING BRACKETS

Part No	Colour	Description
S/B CHEVY		
AF64-4001	Polished	Suit left hand side mid mount P/S pump with long water pump
AF64-4001BLK	Black	Suit left hand side mid mount P/S pump with long water pump
AF64-4011	Polished	Suit left hand side High mount P/S pump with long water pump
AF64-4011BLK	Black	Suit left hand side High mount P/S pump with long water pump
S/B FORD CLEVELAND (Suits GM Saginaw P/S pumps)		
AF64-4009	Polished	Suit left hand side mid mount with Saginaw P/S pump
AF64-4009BLK	Black	Suit left hand side mid mount with Saginaw P/S pump



AF64-4009BLK



AF64-4009



AF64-4001



BILLET LOW MOUNT A/C BRACKET

Aeroflow has developed an air conditioning compressor bracket that positions the compressor low and snug on passenger side beside the block. Made to suit small block Chevy. These brackets are a custom fit and may suit universal applications in hot rods and muscle cars fitted with small block Chevys dependant on space.

(shown fitted in 1969 Camaro). Used with High mount P/S Bracket

Part No	Colour	description
S/B CHEVY		
AF64-4012	Polished	Suit Small Block Chevy
AF64-4012BLK	Black	Suit Small Block Chevy

BILLET ALTERNATOR BRACKETS

Part No Colour description
LS SERIES CHEVY suits VT-VZ belt line

AF64-4027	Polished	Left hand side standard position
AF64-4027BLK	Black	Left hand side standard position

S/B CHEVY

AF64-4002	Polished	Mid mount right hand side to long water pump
AF64-4002BLK	Black	Mid mount right hand side to suit long water pump
AF64-4004	Polished	Low mount left hand side to suit Short water pump
AF64-4004BLK	Black	Low mount left hand side to suit Short water pump

B/B CHEVY

AF64-4003	Polished	Low mount left hand side to suit Short water pump
AF64-4003BLK	Black	Low mount left hand to suit Short water pump

S/B FORD WINDSOR (All Mount on Driver side)

AF64-4006	Polished	289-302 Std mount, right hand side lower radiator water pump hose
AF64-4006BLK	Black	289-302 Std mount right hand side lower radiator water pump hose
AF64-4007	Polished	289-302 Std mount, left handside lower radiator water pump hose
AF64-4007BLK	Black	289-302 Std mount left hand side lower radiator water pump hose
AF64-4005	Polished	351W Std mount, left hand side lower radiator water pump hose
AF64-4005BLK	Black	351W Std mount, left hand side lower radiator water pump hose
AF64-4008	Polished	351W Std mount, right hand side lower radiator water pump hose
AF64-4008BLK	Black	351W Std mount, right hand side lower radiator water pump hose

S/B FORD CLEVELAND

AF64-4000	Polished	351C Mid mount right hand side
AF64-4000BLK	Black	351C Mid mount right hand side

HOLDEN V8

AF64-4033	Polished	Mid mount right hand side, pre EFI
AF64-4033BLK	Black	Mid mount right hand side, pre EFI
AF64-4025	Polished	Mid mount left hand side. All
AF64-4025BLK	Black	Mid mount left hand side. All

HOLDEN LH - LX - UC TORANA

AF64-4035	Polished	Right hand side Low Mount
AF64-4035BLK	Black	Right hand side Low Mount

NISSAN RB

AF64-4028	Polished	Alternator bracket
AF64-4028BLK	Black	Alternator bracket



AF64-4002



AF64-4004BLK



AF64-4028



AF64-4027BLK



AF64-4006



AF64-4028

AF64-4028BLK



AF64-4000



AF64-4035BLK



AF64-4025BLK



AF64-4033

GM HOLDEN USING CHEVY

ALTERNATOR MOUNTING KIT

When you mount a Chevy alternator to a Holden engine its close but not quite right. Aeroflow have developed a spacer kit to get the fitment and belt alignment perfect. This adapter kit allows the use of Aeroflow Chev 100, 120 and 140 AMP alternators to be mounted to any Holden V8 and even the Holden 6 Cylinder, fitted with a Bosch alternator.

AF4000-1000

HEIM-JOINT ADJUSTABLE TENSIONER

Aeroflow now offer universal stainless steel adjusting rods. The adjusting rods feature 3/8" eyelet rod ends for use with 3/8" diameter bolts or smaller when used with a shoulder bolt and offer 1" of adjustment. These handy adjusting rods are the same as used in our billet alternator, power steer and a/c bracket kits and can be used in many custom applications.

Adjusters allow 1" / 25mm further adjustment

Part No	Length
AF60-4011	90mm / 3.54" and
AF60-4002	98.6mm / 3.88"
AF60-4000	112.4mm / 4.375"
AF60-4007	146mm / 5.75"
AF60-4008	168 / 6.625"



Billet LS Belt Tensioners

The GM LS engines with the factory spring loaded belt tensioners become prone to throwing belts when used in performance applications and with aftermarket balancers. These bolt-on Billet LS Belt Tensioners are a fully adjustable solution for controlling potentially damaging resonance and maintaining desired belt tension.

GM LS1, -2, -3, -6 & -7 Adjustable Belt Tensioner w/ Idler Pulley Passenger Cars

C054021

GM LS1 Adjustable Belt Tensioner, 1998-02 F-Body

C054025



LS SERIES BILLET POWER STEERING BRACKETS

Suits VT-VZ belt line, late model small pump.

Part No	Colour	Description
LS SERIES CHEVY		
AF64-4026	Polished	Passenger side standard position
AF64-4026BLK	Black	Passenger side standard position



LS BILLET DRIVE BELT TENSIONER

Chev LS Billet Belt Drive tensioner complete with billet pulley and nose cover allows for a manual adjustment for accurate belt tension complete with all mounting hardware. Suits VT-VZ belt line

Part No	Colour	Description
AF64-4031	Polished	Manual LS belt tensioner
AF64-4031BLK	Black	Manual LS belt tensioner
AF59-4031	Polished	Replacement pulley, nose cover & bolts
AF59-4031BLK	Black	Replacement pulley, nose cover & bolts

Note: Suits VT-VZ belt line

MARCH

PERFORMANCE PULLEYS & BRACKETS

Alternator Bracket Kits

Our Performance Series 6061-T6 powder coated billet aluminium brackets are precision CNC machined for perfect fit and alignment. To get belt tension perfect we supply you with high strength stainless steel tensioning rods and chrome moly rod ends. Available in a variety of mounting styles.



MPP20125

Application

Chev SB with Long W/Pump, R/Hand Top Mount	MPP20120
Chev SB with Long W/Pump, R/Hand Mid Mount	MPP20124
Chev SB with Short W/Pump, L/Hand Low Mount	MPP20215
Chev SB with Short W/Pump, Inward Top Mount	MPP20721
Chev BB with Long W/Pump, R/Hand Top Mount	MPP20125
Chev BB with Short W/Pump, L/Hand Low Mount	MPP20315
Chrysler 383-440, R/Hand Top Mount	MPP40020
Ford 289-302 Windsor, R/Hand Top Mount	MPP30028
Ford 289-302 Windsor with R/Hand Lower Rad Hose	MPP30351
Ford 289-302 Windsor with L/Hand Lower Rad Hose	MPP30355
Ford 351 Windsor with R/Hand Lower Rad Hose	MPP30391
Ford 351 Windsor with L/H Lower Rad Hose	MPP30395
Ford 302-351 Cleveland with Ford 1G Alternator	MPP30400
Ford BB 429-460 Serpentine Alt Bracket	MPP30200

Power Steering Bracket Kits

Our Performance Series 6061-T6 powder coated billet aluminium brackets are precision CNC machined for perfect fit and alignment. To get belt tension perfect we supply you with high strength stainless steel tensioning rods and chrome moly rod ends (except MPP30356).



Application

Chev SB with Long W/Pump suits 1966-76 Saginaw	MPP20160
Chev BB Suit Elec W/P Suit Meziere, CSI & CSR	MPP23004
Ford 302-351 Windsor with Standard Ford Pump	MPP30038
Ford 302-351 Windsor with Saginaw Keyway Pump	MPP30037
Ford 302-351 Windsor with 1971-76 Mustang Pump	MPP30356
Ford 302-351 Cleveland with Saginaw Pump	MPP30405

Electric Water Pump

Bracket Kits

Designed to solve the problem of how to mount accessories to engines with the popular electric water pumps. Complete with stainless steel tensioning rod and chrome moly rod ends. Suits Meziere, CSI/CSR, CVR and Proform electric water pumps.



Application

Chev Small Block Alternator Bracket	MPP22025
Chev Small Block Power Steering Bracket	MPP22026



BILLET ALTERNATOR MOUNT KITS

These bracket kits are designed to mount mini Nippondenso style and 93mm alternators to either side of the motor, while clearing the electric water pump. Works with most old and new style drive mandrel kits. Includes all spacers and hardware.



Description

Alternator Mount Kit, SBC with Moroso Pump	MO63827
Alternator Mount Kit, SBC with CSR Pump	MO63828
Alternator Mount Kit, SBC with Meziere Pump	MO63829
Alternator Mount Kit, BBC with Moroso Pump	MO63832
Alternator Mount Kit, BBC with CSR Pump	MO63833

FORD SB ALTERNATOR BRACKET

This kit will mount a standard Ford or Nippondenso style alternator on either side of the engine. Fits with mechanical water pumps and electric water pumps from all major manufacturers with V-belt or serpentine pulley systems. Includes all mounting hardware.



Description

Small Block Ford Alternator Bracket

Part No.

MO63810



ALTERNATOR MOUNT KIT

Big Block Chevy with early style Delco alternator
MO63840

CHRYSLER SB ALTERNATOR BRACKET

This kit enables the racer/enthusiast to mount either a 93mm or 115mm Nippondenso alternator to a Chrysler A series engine, (318, 340 & 360) in as many as fourteen different configurations. Mounts alternator to either side of engine and fits with stock mechanical water pumps and Moroso electric water pumps. Features adjustable turnbuckle for easy and accurate belt tension adjustments. Includes all mounting hardware.



Description

Small Block Chrysler Alternator Bracket

Part No.

MO63815



TOP MOUNT ALTERNATOR BRACKET

RIGHT SIDE

FOR LONG WATER PUMP APPLICATIONS

Precision machined in the USA, Billet Specialties top mount passenger side alternator bracket fits the popular GM 60 to 80-amp alternators. Stainless steel hardware included. For use with v-groove pulleys or serpentine style pulleys.

Pulleys sold separately see pulleys section.

BSFM0109PC	Small Block Chevy
BSFM0209PC	Big Block Chevy



MID MOUNT ALTERNATOR BRACKET

RIGHT SIDE

FOR LONG WATER PUMP APPLICATIONS

Precision machined in the USA, Billet Specialties mid mount passenger side alternator bracket fits the popular GM 60 to 80-amp alternators. Stainless steel hardware included. For use with v-groove pulleys or serpentine style pulleys. Pulleys sold separately.

BSFM0107PC	Small Block Chevy
BSFM0207PC	Big Block Chevy



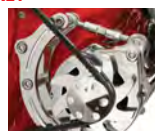
LOW MOUNT ALTERNATOR BRACKET

LEFT SIDE

FOR SHORT WATER PUMP APPLICATIONS

Precision machined in the USA, Billet Specialties low mount driver side alternator bracket fits the popular GM 60 to 80-amp alternators. Stainless steel hardware included. For use with v-groove pulleys or serpentine style pulleys. Pulleys sold separately.

BSFM0105PC	Small Block Chevy
BSFM0205PC	Big Block Chevy



Top Mount Air & Alternator Bracket

This bracket is ideal for small block Chevrolet motors that do not have mounting holes in the cylinder heads. The bracket mounts to the water pump and intake manifold.

Application:

- Small Block Chevy
- Short Water Pump
- For use with
- GM 60 to 80 amp alternators
- Sanden 508 AC compressors

Kit Includes:

- Multi-piece polished billet aluminum bracket
- Stainless steel mounting hardware

Note: Not for use with a GM compressor, super chargers, TPI, or 3-deuce set-ups.

BS10120 Top Mount Bracket



PULLEYS & DRIVE KITS



AF64-4300



AF64-4300BLK

BILLET ALTERNATOR FAN & PULLEY

Part No	Colour	description
AF64-4300	Polished	Billet Alternator Fan & Pulley
AF64-4300BLK	Black	Billet Alternator Fan & Pulley



BILLET V PULLEYS

Part No Colour Description

S/B FORD CLEVELAND

AF64-2023	Silver	Billet Water Pump Pulley 302-351C Ford
AF64-2023BLK	Black	Billet Water Pump Pulley 302-351C Ford
AF64-2024	Silver	Billet Crank Pulley, Single Groove 302-351C Ford 4 Bolt Damper
AF64-2024BLK	Black	Billet Crank Pulley, Single Groove 302-351C Ford 4 Bolt Damper

HOLDEN

AF64-4022	Polished	Billet Water Pump Pulley, Single V V8 with small bearing water pump
AF64-4022BLK	Black	Billet Water Pump Pulley, Single V V8 with small bearing water pump
AF64-4024	Polished	Billet Water Pump, Single Groove V8 with Large (Jumbo) bearing water pump
AF64-4024BLK	Black	Billet Water Pump, Single Groove V8 with Large (Jumbo) bearing water pump
AF64-4023	Polished	Billet Crank Pulley, Single Groove Suits V8 Holden
AF64-4023BLK	Black	Billet Crank Pulley, Single Groove Suits V8 Holden



GILMER DRIVES and ACCESSORIES

Aeroflow's Industry first 100% complete billet 6061-T6 aluminium Gilmer drive. Double anodised for case hardness for maximum life of your Gilmer teeth which prevents slippage and torn belts. Complete with chrome allen key bolts.

Part No Description

AF64-3000	Silver	SB/BB Chevy short water pump
AF64-3000BLK	Black	SB/BB Chevy short water pump
AF64-3001	Silver	SB/BB Chevy long water pump with V-groove for P/S or A/C
AF64-3001BLK	Black	SB/BB Chevy long water pump with V-groove for P/S or A/C

AF64-3002	Silver	289-351W, 302-351C 3 & 4 bolt pattern with V-groove
AF64-3002BLK	Black	289-351W, 302-351C 3 & 4 bolt pattern with V-groove

AF64-3003	Silver	253-308 Holden V8 with late style pump
AF64-3003BLK	Black	253-308 Holden V8 with late style pump

Note use with AF64-3005 for early pump

AF64-3006	Silver	304 EFI Holden V8 with P/Steer pump spacers
AF64-3006BLK	Black	304 EFI Holden V8 with P/Steer pump spacers

NOTE: Belts sold separately

BOSCH Belts to suit Gilmer accessories

B011A1055	Power Steer Belt V-Groove use with AF64-3006
B013A785	Air Conditioner Belt V-Groove use with AF64-3006



GILMER BELTS

Aeroflow performance Gilmer belts are designed with extra nylon webbing making them thicker for superior performance and durability

Part No	Cross over	Length/Dimensions
AF65-1007	300L100	30" (762mm) x 1.5" (38.1mm)
AF65-1008	300L150	30" (762mm) x 1.5" (38.1mm)
AF65-1009	322L100	32" (813mm) x 1.5" (38.1mm)
AF65-1010	322L150	32" (813mm) x 1.5" (38.1mm)
AF65-1001	367L150	36.7" (932mm) x 1.5" (38.1mm)
AF65-1002	390L150	39" (991mm) x 1.5" (38.1mm)
AF65-1003	405L150	40.5" (1029mm) x 1.5" (38.1mm)
AF65-1004	420L150	42" (1067mm) x 1.5" (38.1mm)
AF65-1006	435L150	43.5" (1105mm) x 1.5" (38.1mm)
AF65-1005	450L150	45" (1143mm) x 1.5" (38.1mm)

GILMER DRIVE PULLEYS (Sold as singles)

Part No	Description
AF59-3000A	Silver Alternator pulley suits all kits
AF59-3000ABLK	Black Alternator pulley suits all kits
AF59-3000C	Silver SBC/BBC short water pump, crank pulley
AF59-3000CBLK	Black SBC/BBC short water pump, crank pulley
AF59-3000W	Silver SBC/BBC short & long water pump pulley
AF59-3000WBLK	Black SBC/BBC short & long water pump pulley
AF59-3001C	Silver SBC/BBC long water pump, crank pulley with V-groove for P/S or A/C
AF59-3001CBLK	Black SBC/BBC long water pump, crank pulley with V-groove for P/S or A/C
AF59-3002C	Silver 289-351W, 302-351C 3 & 4 bolt pattern crank pulley with V-groove
AF59-3002CBLK	Black 289-351W, 302-351C 3 & 4 bolt pattern crank pulley with V-groove
AF59-3002W	Silver 289-351W, 302-351C water pump pulley
AF59-3002WBLK	Black 289-351W, 302-351C water pump pulley
AF59-3003C	Silver 253-308 Holden V8 crank pulley
AF59-3003CBLK	Black 253-308 Holden V8 crank pulley
AF59-3003W	Silver 253-308 Holden V8 water pump pulley
AF59-3003WBLK	Black 253-308 Holden V8 water pump pulley

HOLDEN GILMER V-GROOVE ADAPTER

Aeroflow's Holden Gilmer power steer V-groove adapter allows you to adapt and run a v-belt accessory such as power steering or air-conditioning with your Aeroflow Holden Gilmer Drive.

Note:-Accessory drive mounting brackets may need to be modified to obtain correct v-belt alignment.

Part No	Description
AF64-3010	Silver Holden Gilmer power steer V-groove adapter
AF64-3010BLK	Black Holden Gilmer power steer V-groove adapter

GILMER PULLEY SPACER

Universal shim for water pump pulley, 6mm (1/4") thick. 5/8 centre hole. Fits Chev, Ford & Holden. Required for Red style pump on Holden V8.

Part No AF64-3005

Billet Pulleys

PART NO	DESCRIPTION
MG5310	SINGLE GROOVE SHORT W/PUMP, PULLEY S/B CHEV BILLET
MG5312	SINGLE GROOVE CRANK PULLEY, WITH SHORT W/PUMP S/B CHEV
MG5313	DOUBLE GROOVE CRANK PULLEY, WITH SHORT WATER PUMP S/B CHEV
MG5314	SINGLE GROOVE LONG W/PUMP, PULLEY S/B CHEV BILLET STYLE
MG5316	SINGLE GROOVE CRANK PULLEY, WITH LONG W/PUMP S/B CHEV
MG5317	DOUBLE GROOVE CRANK PULLEY, WITH LONG W/PUMP S/B CHEV
MG5320	SINGLE GROOVE ALTERNATOR, PULLEY WITH NOSE PIECE S/B CHEV



ALTERNATOR PULLEYS

Large 5.00" diameter alternator pulleys to reduce alternator speed for high engine RPM applications. Machined from high grade, lightweight aluminium to reduce alternator bearing loads. Deep groove helps retain V-belt at high RPM. Uses 36" x 17/32" V-belts.

Description	Part No.
For GM and Ford Alternators with 21/32" dia. Shaft	MO64800
For Chrysler Alternators to 1971	MO64840

Billet Aluminium Crankshaft Pulleys

- Machined from the highest grade aircraft billet aluminium for maximum durability
- Deep precision machined grooves ensure belt retention even during extreme changes in engine RPM
- When crankshaft and water pump pulleys are used together, water pump speed is reduced by approximately 30%
- Hard-coat anodized for extended life
- V style belt

MO64551 - 351C Crankshaft Pulley, Billet, double groove, 4" dia. fits all 4-bolt dampeners, 4.00" O.D.

CRANK PULLEY SHIM KIT

Includes 3 aluminium shims per pack, 1/16", 1/8" and 3/16"

Description	Part No
Shim Kit Suit SB & BB Chev	MO64031

Cast Aluminium Crankshaft Pulleys

- Precision machined from high grade, lightweight aluminium castings
- Extra-deep belt grooves provide added belt retention during rapid changes in engine RPM
- Small pulley diameter slows fan, water pump, and alternator speed to reduce horsepower-robbing drag
- High RPM water pump operation is improved, reducing impeller speed below cavitation threshold
- V style belt

MO64060 - SBC Crankshaft Pulley, double groove, 25% reduction, 5.40" O.D. (with short water pump)

MO64050 - SBC Crankshaft Pulley, single groove, 30% reduction, 5.25" O.D. (with short water pump)



CHEV SMALL BLOCK Short Water Pump

Crank Pulley	Chrome	Polished Alloy	Black
Single Groove	RPCR9602	RPCR9480POL	RPCR9480BK
Double Groove	RPCR9603	RPCR9481POL	RPCR9481BK
Triple Groove	RPCR9603	RPCR9485POL	RPCR9485BK
Water Pump			
Single Groove	RPCR9600	RPCR9478POL	RPCR9478BK
Double Groove	RPCR9601	RPCR9479POL	RPCR9479BK

Aluminium 15% Underdrive Pulleys -Short W/Pump

Water Pump - Double Groove	RPCR6006
----------------------------	----------

CHEV SMALL BLOCK Long Water Pump

Crank Pulley	Chrome	Polished Alloy	Black
Single Groove	RPCR9606	RPCR9484POL	RPCR9484BK
Double Groove	RPCR9607	RPCR9485POL	RPCR9485BK
Triple Groove	RPCR9608	RPCR9486POL	RPCR9486BK
Water Pump			
Single Groove	RPCR9604	RPCR9482POL	RPCR9482BK
Double Groove	RPCR9605	RPCR9483POL	RPCR9483BK

CHEV BIG BLOCK Short Water Pump

Crank Pulley	Chrome	Polished Alloy	Black Alloy
Single Groove	-	RPCR8841POL	RPCR8841BK
Double Groove	RPCR9816	RPCR8843POL	RPCR8843BK
Triple Groove	-	RPCR8849POL	-
Water Pump			
Single Groove	-	RPCR8840POL	RPCR8840BK
Double Groove	RPCR9815	RPCR8842POL	RPCR8842BK

CHEV BIG BLOCK Long Water Pump

Water Pump	Chrome	Polished Alloy	Black
Double Groove	RPCR9723	RPCR8844POL	RPCR8844BK
Crank Pulley			
Triple Groove	-	RPCR8845POL	-

FORD 289 WINDSOR

Crank Pulley	Chrome	Black
Crank Pulley 1965-66 - Single Groove	RPCR8971	RPCR8971B
Crank Pulley 1964-67 - Double Groove	RPCR8974	RPCR8974B
Crank Pulley 1965-66 - Triple Groove	RPCR8972	RPCR8972B
Water Pump		
Water Pump 1965-66 - Single Groove	RPCR8970	RPCR8970B
Water Pump 1965-66 - Double Groove	RPCR8975	RPCR8975B
Water Pump 1964-73 - Triple Groove (Triple groove for California Smog Pump)	RPCR8973	RPCR8973B

GM POWER STEERING PULLEYS

Fits Early GM Thru 1984 with Keyway and 5/8" Shaft

Description	Chrome	Polished Alloy
Single Groove	RPCR8948	RPCR8848POL
Double Groove	RPCR8947	RPCR8847POL

GM ALTERNATOR PULLEYS

Fits Small Block Chev. 2.8" diameter

Description	Chrome	Polished Alloy	Black
Single Groove	-	RPCR9487POL	RPCR9487BK
Double Groove	RPCR9447	-	-

ALTERNATOR PULLEY FANS

Fits GM and Ford (will not fit trucks).

Description	Polished Alloy
Alternator Pulley Fan	RPCR8867

WATER PUMP PULLEY BOLTS

Countersunk head to fit SB & BB Chevy aluminium pulleys. 4 pack. Water Pump Pulley Bolts, 5/16"-24 x 5/8"

ALUMINIUM WATER PUMP PULLEY NOSE

Fits SB Chevy 283-350

Application	Satin	Polished
Chev Small Block - Short Water Pump	RPCR9488	RPCR9488POL
Chev Small Block - Long Water Pump	RPCR9489	RPCR9489POL



GFB Lightweight Under-Driven Pulleys

GFB pulleys are manufactured from 6061-T6 aluminium billet, making them lighter than their factory steel counterparts. How much lighter depends on the particular model, but on average the weight saving is around 2kg. This lower weight yields a large reduction in the rotating inertia, allowing the engine to accelerate faster. Additional power increases also come from making the crank pulley smaller, thereby slowing down the accessories and reducing the driven load (particularly at high RPM).

MAZDA

RX-7 to Series 5 Twin Belt Alternator Pulley - Black GFB2215BLA

MITSUBISHI

Mitsubishi EVO IV-IX Crank Pulley - Black GFB2011

SUBARU

WRX MY95-04 Crank Pulley - Black GFB2009

WRX MY01-02 Crank & Alternator Pulleys - Black GFB2001BLA



V-Belt Pulley Sets

March performance ratio V-belt pulley sets increase horsepower by reducing accessory drag and eliminate belt throwing. Designed for daily street driving. Precision CNC machined to run perfectly true. 6061-T6 aluminium for extra strength and wear. Finished with a "No Polishing" clear powder coat. Includes crank pulley, water pump pulley and alternator pulley with nose cover. Optional power steering pulleys available for use with 2V and 3V crank pulley kits.

Application	Part No.
Chev SB with Short Water Pump, 1V Crank Pulley	MPP6010
Chev SB with Short Water Pump, 2V Crank Pulley	MPP6015
Chev SB with Long Water Pump, 1V Crank Pulley	MPP6050
Chev SB with Long Water Pump, 2V Crank Pulley	MPP6070
Chev BB with Short Water Pump, 1V Crank Pulley	MPP7510
Chev BB with Short Water Pump, 2V Crank Pulley	MPP7530
Chev BB with Long Water Pump, 1V Crank Pulley	MPP7005
Chev BB with Long Water Pump, 2V Crank Pulley	MPP7015
Chrysler 273-340 1967-69, 1V Crank Pulley	MPP10215
Chrysler 273-340 1967-69, 2V Crank Pulley	MPP10255
Chrysler 318-360 1970-On, 1V Crank Pulley	MPP10210
Chrysler 318-360 1970-On, 2V Crank Pulley	MPP10250
Chrysler 383-440 & Crate Hemi, 1V Crank Pulley	MPP10010
Chrysler 383-440 & Crate Hemi, 2V Crank Pulley	MPP10050
Ford Windsor, 3-Bolt 1V Crank Pulley, 1V WP Pulley	MPP1550
Ford Windsor, 3-Bolt 2V Crank Pulley, 2V WP Pulley	MPP1560
Ford Windsor, 3-Bolt 3V Crank Pulley, 2V WP Pulley	MPP1595
Ford Windsor & Cleveland, 4-Bolt 1V Crank Pulley	MPP1610
Ford Windsor & Cleveland, 4-Bolt 2V Crank Pulley	MPP1630
Ford Windsor 4 Bolt 1V Crank, 1V WP Pulley	MPP1615
Ford Windsor 4 Bolt 1V Crank, 1V WP Pulley H/F	MPP1617
Ford 429-460, 1V Crank Pulley, 1V WP Pulley	MPP1810
Ford 429-460, 2V Crank Pulley, 1V WP Pulley	MPP1830
Ford 429-460, 3V Crank Pulley, 2V WP Pulley	MPP1850
Ford 390-428 FE, 1V Crank Pulley, 1V WP Pulley	MPP1910
Ford 390-428 FE, 2V Crank Pulley, 2V WP Pulley	MPP1930
Ford 390-428 FE, 3V Crank Pulley, 2V WP Pulley	MPP1950

Optional Accessories For V-Belt Pulley Sets

Optional accessories for March V-belt pulley kits. Power steering pulleys are for use with 2V or 3V crank pulley kits.

Application	Part No.
Alternator Fan for All Chev and Ford Kits	MPP221
W/Pump Nose Cover for Chev Short Pump & Ford	MPP312
W/Pump Nose Cover for Chev Long Pump	MPP314
Press On P/Steer Pulley for SBC Short W/Pump	MPP515
Keyway P/Steer Pulley for SBC Short W/Pump	MPP523
Press On P/Steer Pulley for SBC Long W/Pump	MPP531
Keyway P/Steer Pulley for SBC Long W/Pump	MPP513
Press On P/Steer Pulley for Chrysler Kits	MPP531
Keyway P/Steer Pulley for Chrysler Kits	MPP530
Federal P/Steer Pulley for Chrysler Kits	MPP532
P/Steer Pulley for Ford 302-351 & 429-460 Kits	MPP502

V-Belt Pulleys

March Performance billet aluminium V-belt pulleys for hard to find applications.

Application	Part No.
1V Alternator Pulley & Cover GM/Ford 2-11/16" Diam.	MPP137
1V Crank Pulley Ford 302-351 w/ 4-Bolt Fluidampr	MPP1532
1V W/P Pulley 289-351W 5" Diam	MPP1553
2V Crank Pulley Ford 302-351W w/ 4-Bolt Fluidampr	MPP1535
3V Crank Pulley Ford 302-351W w/ 4-Bolt Fluidampr	MPP1539
2V Crank Pulley Ford 302-351W 1970-On, 5-1/2" Diam	MPP1631
3V Crank Pulley Ford 302-351W 1970-On, 5-1/2" Diam	MPP1651
1V W/P Pulley Ford 289-351W 1965-69, 6" Diam.	MPP1552
2V W/P Pulley Ford 289-351W 1965-69, 5" Diam.	MPP1563
2V W/P Pulley Ford 302-351W 1970-On, 6-1/4" Diam	MPP1632

LS-1 Fluid Dampened Crank Pulley

Fluid dampened design will not cause spark sensors to retard timing with resultant loss in power unlike some sub standard designed pulleys.

Includes power and amp series alternator pulley. Dyno tested at 12H.P. gain. S.F.I. approved.

LS-1 Fluid Dampened Crank Pulley & Alternator Pulley

MPP4505

Serpentine Conversion Pulley Sets

Our performance serpentine pulley sets replace your Low performance

V-belts and eliminate belt throwing while retaining your standard rotation water pump. Increases horsepower by reducing accessory drag. Precision CNC machined to run perfectly true. 6061-T6 aluminium for extra strength and wear. Finished with a "No Polishing" clear powder coat. Includes crank pulley, water pump pulley and alternator pulley with nose cover.

Application

Chev Small Block with Short Water Pump

Part No.

MPP6210

Chev Small Block with Long Water Pump

MPP6310

Chev Big Block with Short Water Pump

MPP7610

Chev Big Block with Long Water Pump

MPP7210

Ford 302-351 Windsor & Cleveland

MPP1670

Ford 5.0L 79-93

MPP2210

Ultra Serpentine Conversion Kits

Replace your low performance V-belts, pulleys and brackets with this compact mid mount kit that places your alternator and power steering pump below the centre line of the water pump.

Kits Include:

- Crank pulley
- Water pump pulley with nose cover
- Alternator pulley with alternator fan and nose cover

- Alternator Bracket with relocation arm and adjustment rod
- Power steering kit includes power steering brackets and pulley
- A/C kits include Bracket, idler and A/C clutch cover
- Superior grade 8 mounting hardware

Application

Chev SB with Long WP, No P/Steering

Part No.

MPP22013

Chev SB with Long WP and Keyway P/Steering Pump

MPP22023

Chev SB with Long WP and Press On P/Steering Pump

MPP22033

Optional Power Steering Nose Cone

MPP360

LS1**Serpentine****System**

March Performance's exceptionally styled LS-1 serpentine system

offers an exciting new look when mounting an accessory drive in your muscle car or street rod. Machined from billet aluminium with all pulleys and brackets powder coated to eliminate polishing.

Kit Includes:

- Aluminium water pump • 105 Amp polished alternator
- Alternator pulley with fan and nose cover • A/C nose cover
- Polished Sanden A/C compressor • Alternator Bracket
- Water pump pulley with nose cover • A/C Bracket
- Polished spring loaded belt tensioner • Crank pulley and Adapter
- Polished type 2 remote power steering pump
- Power steering pulley with nose cover • All mounting hardware
- Power steering Bracket with idler

Application

Chev & Holden LS1 (Block to balancer face 4.875")

Part No.

MPP20085



Style TRACK

FORD FLATHEAD SERPENTINE CONVERSION

Kits include: ,105 Amp Chrome or Polished Alternator, Standard Ford Flat Head Pumps, Sanden style 7176 serpentine A/C Compressor and optional Corvette Type 3 Remote Pump. Pulleys and belt.

MP30600 90 Degree Motor Mounts with Power Steering

MP30615 45 Degree Motor Mounts with Power Steering

MP30610 90 Degree Motor Mounts NO P/S

MP30620 45 Degree Motor Mounts NO P/S

**Style Track Serpentine Pulley Systems**

The March Performance Billet Aluminium Style Track serpentine system features a highly styled one piece alternator and air conditioning bracket that provides a rigid support for the alternator and A/C compressor. A separate bracket allows the option of power steering or no power steering.

Kits Include:

- 105 Amp Alternator • Power steering pulley with nose cover
- Alternator pulley with fan and nose cover
- Matching Chrome or Polished A/C compressor
- Aluminium Water pump and pulley • Belt Tensioning Tool
- Aluminium Timing Cover (Ford Windsor Only)
- Alternator and A/C Brackets • All mounting hardware
- Crank pulley (Larger diameter for better accessory drive)
- Power steering pump (does not include hoses or reservoir)
- Power steering bracket with mounting hardware

Application

Chev Small Block without Power Steering

Part No.

MPP21100

Chev Small Block with Power Steering

MPP21150

Chev Big Block without Power Steering

MPP21200

Chev Big Block with Power Steering

MPP21250

Chrysler 318-360 without Power Steering

MPP40430

Chrysler 318-360 with Power Steering

MPP40440

Ford 289-302-351W without Power Steering

MPP30410

Ford 289-302-351W with Power Steering

MPP30420

Ford 302-351C without Power Steering

MPP30430

Ford 302-351C with Power Steering

MPP30440

Ford 429-460 without Power Steering

MPP30270

Ford 429-460 with Power Steering

MPP30275

**Revolver Serpentine Pulley Systems**

The March Performance Billet Aluminium Revolver serpentine system features a highly styled one piece alternator and air conditioning bracket that provides a rigid support for the alternator and A/C compressor. A separate bracket allows the option of power steering or no power steering.

Kits Include:

- 105 Amp Alternator • Alternator and A/C Brackets
- Alternator pulley with fan and nose cover
- Matching Chrome or Polished A/C compressor
- Aluminium Water pump and pulley • Belt Tensioning Tool
- Crank pulley (Larger diameter for better accessory drive)
- All mounting hardware • Power steering pulley with nose cover
- Power steering pump (does not include hoses or reservoir)
- Power steering bracket with mounting hardware

Application

Chev Small Block without Power Steering

Part No.

MPP21110

Chev Small Block with Power Steering

MPP21160

Chev Big Block without Power Steering

MPP21210

Chev Big Block with Power Steering

MPP21260

Chrysler 5.7L Hemi without Power Steering

MPP40700

Chrysler 5.7L Hemi with Power Steering

MPP40710

Chrysler 383-440 & 426 Hemi without Power Steering

MPP40720

Chrysler 383-440 & 426 Hemi with Power Steering

MPP40725

**Billet Alternator Pulley****1pc. with Fan**

The only billet one-piece alternator pulley and fan in the industry, this pulley and fan combo features a bolt on nose cone to hide the alternator nut and washer, stainless hardware included. Fits most GM, Delco, & Ford alternators.

BS85220

Billet Alternator Pulley

Machined in the USA from 6061-T6 billet aluminium this Billet Specialties one piece alternator pulley features a bolt on nose cone to hide the alternator nut and washer. Fits most GM, Delco, and Ford alternators.

BS85120

Billet A/C Clutch Cover - Sanden 508

Machined from solid billet aluminium, this cover bolts directly to the Sanden 508 clutch with stainless hardware and is polished to a mirror finish.

BS87120

Billet A/C Clutch Cover - Sanden SD-7

Engineered as a direct bolt on for the new Sanden SD-7 compressor and machined from solid aluminium this cover attaches with the supplied stainless hardware and is polished to a mirror finish. Not for use with Sanden 7186 heavy-duty compressor.

BS87220

Billet Crankshaft Pulleys

Our crankshaft pulleys are machined from 6061-T6 billet aluminium and polished to a mirror finish. Available for small and big block Chevy™ applications, with either a long or short water pump. Pulleys are 6-7/16" diameter.

SHORT WATER PUMP APPLICATIONS**Small Block Chev**

BS81120

1-GROOVE

BS81220

2-GROOVE

BS81320

3-GROOVE

Big Block Chev

BS83120

1-GROOVE

BS83220

2-GROOVE

BS83320

3-GROOVE

LONG WATER PUMP APPLICATIONS**Small Block Chev**

BS78210

1-GROOVE

BS78220

2-GROOVE

BS78230

3-GROOVE

Big Block Chev

BS79210

1-GROOVE

BS79220

2-GROOVE

BS79230

3-GROOVE

Billet Water Pump Pulleys

Machined from 6061-T6 billet aluminium for incredible balance and strength. Available for small and big block Chevy™ motors with long or short water pumps. Polished finish. Pulleys are 6-7/16" diameter. 5/8" pilot shaft (will not fit '71-'82 corvette pumps with 3/4" pilot shaft)

Small Block & Big Block Chev**LONG WATER PUMP APPLICATIONS**

BS78110

1-GROOVE

BS78120

2-GROOVE

BS84220

Long Nose Cone

Small Block Chev**SHORT WATER PUMP APPLICATIONS**

BS80120

1-GROOVE

BS80220

2-GROOVE

BS84120

Nose Cone

BSRP8020

Replacement Bolts

Big Block Chev**SHORT WATER PUMP APPLICATIONS**

BS82120

1-GROOVE

BS82220

2-GROOVE

BS84120

Nose Cone

BSRP8020

Replacement Bolts

Billet Power Steering Pulleys

Machined from 6061-T6 billet aluminium and polished to a mirror finish these power steering pulleys are designed to work with Saginaw power steering pumps with a built-in reservoir. Available in either 1/8" keyway or press-on shaft styles. Keyway pulley works with both long or short water pump applications (1966 - 1976 Saginaw Power Steering Pump). Press-on pulleys are for long water pumps only (1977 - UP Saginaw Power Steering Pump).

KEY WAY

BSFM1030PC

Serpentine Belt

BS86120

1-GROOVE

BS86220

2-GROOVE

PRESS-ON V-BELT

BSFM1035PC

Serpentine Belt

BS86420

1-GROOVE

BS86520

2-GROOVE

Big Block & Small Block Chev Power Steering Bracket & Pulleys

Engineered to work with GM remote type II power steering pumps. Billet Specialties power steering bracket and pulley is precision machined from 6061-T6 billet aluminium and mounts low on the driver's side of the motor. Check for clearance before ordering, from center of crank to outer edge of power steering pulley is 10.75 inches.

NOTE: requires the use of a 3 groove pulley.

Small Block Chevrolet

BS12120

Short Water Pump Applications

BS12220

Long Water Pump Applications

Big Block Chevrolet

BS12320

Short Water Pump Applications

POWER STEERING BRACKET FOR SAGINAW PUMP, LEFT SIDE

FOR LONG WATER PUMP APPLICATIONS
Precision machined in the USA, Billet Specialties power steering bracket is designed to work with Saginaw style power steering pumps. Stainless steel hardware included. For use with v-groove pulleys or serpentine style pulleys. Pulleys sold separately.



BSFM0130PC Small Block Chevy Dimensions: 10.25" from center of crank to outside edge of power steering pulley
BSFM0230PC Big Block Chevy Dimensions: 11.75" from center of crank to outside edge of power steering pulley

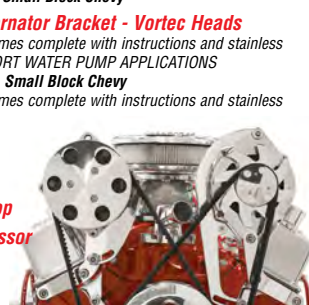
Top Mount Compressor Bracket - Vortec Heads

Independently adjustable without stabilizer bars for a clean look. Each bracket kit comes complete with instructions and stainless steel hardware. SHORT WATER PUMP APPLICATIONS
BS10721 Small Block Chevy



Top Mount Alternator Bracket - Vortec Heads

Each bracket kit comes complete with instructions and stainless steel hardware SHORT WATER PUMP APPLICATIONS
BS10720 Small Block Chevy
Each bracket kit comes complete with instructions and stainless steel hardware



Independent Top Mount Compressor Bracket

To Suit Standard Heads.

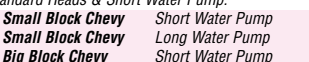
BS10221 Small Block Chevy Short Water Pump
BS11221 Small Block Chevy Long Water Pump
BS10521 Big Block Chevy Short Water Pump



Independent Top Mount Alternator Bracket

Each bracket kit comes complete with instructions and stainless steel hardware To Suit Standard Heads & Short Water Pump.

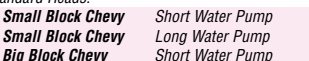
BS10220 Small Block Chevy Short Water Pump
BS11220 Small Block Chevy Long Water Pump
BS10520 Big Block Chevy Short Water Pump



Independent Side Mount Compressor Bracket

Each bracket kit comes complete with instructions and stainless steel hardware To Suit Standard Heads.

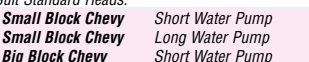
BS10421 Small Block Chevy Short Water Pump
BS11421 Small Block Chevy Long Water Pump
BS10621 Big Block Chevy Short Water Pump



Independent Side Mount Alternator Bracket

Each bracket kit comes complete with instructions and stainless steel hardware. To Suit Standard Heads.

BS10420 Small Block Chevy Short Water Pump
BS11420 Small Block Chevy Long Water Pump
BS10620 Big Block Chevy Short Water Pump



Top Mount Air & Alternator Bracket

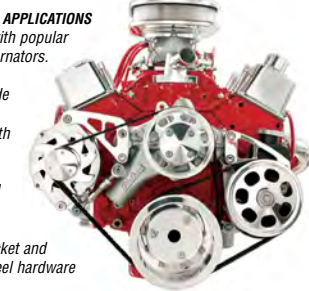
This bracket is ideal for small block Chevrolet® motors that do not have mounting holes in the cylinder heads. The bracket mounts to the water pump and intake manifold. Designed for short water pump applications, this bracket mounts a GM 60 to 80 amp alternator and a Sanden 508 air compressor. Not for use with a GM compressor, superchargers, TPI, or 3-deuce set-ups
BS10120



MID Mount Alternator & Power Steering Kit Right Side

LONG WATER PUMP APPLICATIONS
Designed for use with popular 60-80 amp GM alternators.

Kit includes:
Top mount right side alternator bracket, alternator pulley with fan and nose cone. Water pump pulley with nose cone and crank pulley. Saginaw power steering pump bracket and pulley. Stainless steel hardware is included.



BSFM2121PC Small Block Chevy Keyway Shaft
BSFM2122PC Small Block Chevy Press-on Shaft
BSFM2221PC Big Block Chevy Keyway Shaft
BSFM2222PC Big Block Chevy Press-on Shaft

Small Block Chevrolet® Serpentine Pulley Kit

LONG WATER PUMP
Includes:- Water Pump Pulley with Nose Cone • Crank Pulley • Alternator pulley with Fan & Nose Cone
BSFM3110PC



Big Block Chevrolet® Serpentine Pulley Kit

LONG WATER PUMP
Includes:- Alternator Pulley with Fan and Nose Cone- Water Pump Pulley with Nose Cone - Crank Pulley
BSFM3210PC

SERPENTINE CONVERSION KITS FOR CHEVROLET

Top Mount Alternator Only Kit. Right Side.

LONG WATER PUMP APPLICATIONS

Designed for use with popular 60-80 amp GM alternators.

Kit includes: Top mount right side alternator bracket, alternator pulley with fan and nose cone.

Water pump pulley with nose cone and crank pulley. Stainless steel hardware is included.

BSFM2110PC Small Block Chevy
BSFM2210PC Big Block Chevy



Top Mount Alternator & Power Steering Kit Right Side

LONG WATER PUMP APPLICATIONS

Designed for use with popular 60-80 amp GM alternators.

Kit includes:
Top mount right side alternator bracket, alternator pulley with fan and nose cone. Water pump pulley with nose cone and crank pulley. Saginaw power steering pump bracket and pulley. Stainless steel hardware is included.

BSFM2111PC Small Block Chevy Keyway Shaft
BSFM2112PC Small Block Chevy Press-on Shaft
BSFM2211PC Big Block Chevy Keyway Shaft
BSFM2212PC Big Block Chevy Press-on Shaft



MID Mount Alternator Only Kit Right Side.

LONG WATER PUMP APPLICATIONS

Designed for use with popular 60-80 amp GM alternators.

Kit includes:
Top mount right side alternator bracket, alternator pulley with fan and nose cone. Water pump pulley with nose cone and crank pulley. Stainless steel hardware is included.

BSFM2120PC Small Block Chevy
BSFM2220PC Big Block Chevy



V-TRAC PULLEY SYSTEMS

V-Trac Pulley System™ SB & BB Chevy

Billet Specialties V-Trac pulley systems work with any type of cylinder head or manifold configuration. Best of all the V-Trac features Billet Specialties quality and delivery that you can count on.

Kits Include:

- Patent-pending polished billet aluminium compressor manifold
- New polished Sanden SD-7 A/C compressor
- Polished billet aluminium compressor clutch cover
- Polished 105 amp 1-wire alternator
- Polished 1pc. billet aluminium alternator pulley & fan with nose cone
- New Edelbrock® high-performance water pump
- Polished billet aluminium water pump pulley
- Polished billet aluminium crankshaft pulley
- Polished billet aluminium bridge bracket
- Polished billet aluminium alternator & compressor mounts
- 12pt. ARP polished stainless steel fasteners

BSV3120 Small Block Chevy V-Trac system with A/C ONLY
BSV4120 Big Block Chevy V-Trac system with A/C ONLY



Kits with Power Steering Include:

- Polished billet aluminium power steering bracket
- New power steering pump
- Polished billet aluminium power steering pulley

BSV3220 Small Block Chevy V-Trac system with A/C with Power Steering
BSV4220 Big Block Chevy V-Trac system with A/C with Power Steering



Available By Special Order.

TRU-TRAC PULLEY SYSTEMS

Tru Trac Serpentine System for Small Block & Big Block Chevy

Kits are also available with Power steering and NO A/C
Tru Trac features: -Easy Straight Forward assembly, No spacers or washers to fool with. -All Hardware and Fasteners are included with each kit. No Running around for anything! -Entire Tru Trac System mounts to engine block, allowing any cylinder head/intake configuration.

Each Kit Includes: -New Polished Power Master 105 amp one wire alternator. -Polished Billet Aluminium Alternator Bracket -Polished Billet Aluminium Alt Fan and Pulley -New Polished Sanden SD-7 Compressor with Polished Manifold Block and Fittings -Polished Billet Aluminium Compressor Bracket -Stainless Fasteners -Polished Billet Aluminium Compressor Cover -Serpentine Belt -Polished Billet Aluminium Support Bracket -New Edelbrock Aluminium Reverse Rotation Water Pump -Polished Billet Aluminium Water Pump Pulley with Hard Coat Anodized belt surface to reduce wear -Polished Billet Aluminium Tensioner Specifically -Polished Billet Aluminium Tensioner Pulley with Hard Coat Anodized belt surface to reduce wear -Polished Billet Aluminium Crank Pulley

Kit With Power Steering Also Includes:

-New Aluminium Power Steering Pump (Sweet MFG.) with AN Fittings (-6&-10) Flow Tested and Pre Set to 850psi
-Polished Billet Aluminium Power Steering Pulley
-Polished Billet Aluminium Power Steering Bracket

Small Block Chevrolet

BS13220 with A/C & Power Steering
BS13120 with A/C ONLY
BS13225 with Power Steering ONLY
BS13125 with NO A/C & NO Power Steering

Big Block Chevrolet

BS14220 with A/C & Power Steering
BS14120 with A/C ONLY
BS14225 with Power Steering ONLY
BS14125 with NO A/C & NO Power Steering

LS1, LS2, & LS6 Chevrolet

BS13400 with A/C & Power Steering
BS13400 with A/C ONLY
BS13405 with Power Steering ONLY
BS13425 with NO A/C & NO Power Steering



Tru Trac for Ford Small & Big Block

Exclusive design features a 100% precision-machined billet aluminium timing cover that supports all components. There is no need to tap into the block. The Tru Trac serpentine system fits 289, 302, and 351W motors. Compact: Fits in the tightest engine bays. Perfect for muscle cars and street rods! The Tru Trac's OE styling gives your motor a clean - professional look instead of the clutter of stabilizer bars and adjusters. Note: Not For Use With Mechanical Fuel Pumps. Designed for 4-hole crankshaft dampers, Check Tech Info for details.

Each Kit Includes: -Polished all-billet aluminium timing cover -New Polished Power Master 105 amp one wire alternator. -Polished Billet Aluminium Alt Fan and Pulley -New Polished Sanden SD-7 Compressor with Polished Manifold Block and Fittings -Polished Billet Aluminium Compressor Cover -Polished Billet Aluminium Support Bracket -New Reverse Rotation Water Pump -Polished Billet Aluminium Water Pump Pulley with Hard Coat Anodized belt surface to reduce wear -Polished Billet Aluminium Tensioner Specifically -Polished Billet Aluminium Tensioner Pulley with Hard Coat Anodized belt surface to reduce wear -Polished Billet Aluminium Crank Pulley -Stainless Fasteners -Serpentine Belt

Kit With Power Steering Also Includes:

-New Aluminium Power Steering Pump (Sweet MFG.) with AN Fittings (-6&-10) Flow Tested and Pre Set to 850psi @ 4GPM
-Polished Billet Aluminium Power Steering Pulley
-Polished Billet Aluminium Power Steering Bracket

Small Block FORD

BS13600 with A/C & Power Steering
BS13620 with A/C ONLY
BS13605 with Power Steering ONLY
BS13625 with NO A/C & NO Power Steering

Big Block FORD

BS14600 with A/C & Power Steering
BS14620 with A/C ONLY
BS14605 with Power Steering ONLY
BS14625 with NO A/C & NO Power Steering

FORD FE Big Block Tru Trac Serpentine System

From the solid foundation of the water pump the Tru Trac for Ford FE installs with any cylinder head or manifold set-up.

Tru Trac for Ford FE includes:

- Precision machined and polished billet aluminium brackets & pulleys
- New polished Powermaster 105-amp one-wire alternator
- New polished Sanden SD-7 compressor with patented A/C manifold block
- New Edelbrock high-performance water pump
- Polished billet aluminium tensioner specifically made for this system
- Polished ARP 12pt stainless fasteners
- Goodyear Gatorback serpentine belt

Kit with power steering also includes:

- New Maval Mfg. GM type-II power steering pump
- Polished billet aluminium bracket and pulley

FORD FE Big Block

BS14700	with A/C & Power Steering
BS14720	with A/C ONLY
BS14705	With Power Steering ONLY
BS14725	with NO A/C & NO Power Steering

PONTIAC TRU-TRAC Serpentine System

Tru Trac for the 326/455 Pontiac.

Tru Trac Serpentine Systems Include:

- Polished Powermaster 105 amp 1-wire alternator
- Polished billet aluminium 1pc. alternator fan & pulley
- Natural finish Edelbrock standard rotation water pump
- Polished billet aluminium water pump pulley
- Polished billet aluminium bridge bracket
- Patent-pending polished billet aluminium tensioner engineered specifically for each Tru Trac serpentine system
- Polished billet aluminium tensioner pulley
- Polished billet aluminium crankshaft pulley
- Polished ARP 12-point stainless steel fasteners
- Goodyear Gatorback 6-rib serpentine belt
- Comprehensive installation manual
- Select pulleys are hard-coat anodized for increased durability in high wear areas

Kits With AC Include:

- Polished Sanden SD-7 AC compressor
- Polished billet aluminium AC compressor clutch cover
- Patented polished billet aluminium AC compressor manifold

Kits With Power Steering Include:

- Natural finish Maval Mfg. power steering pump with AN fittings
- Polished billet aluminium power steering pulley

BS14900	with A/C & Power Steering
BS14920	with A/C ONLY
BS14905	with Power Steering ONLY
BS14925	with NO A/C & NO Power Steering

Small Block Chrysler TRU-TRAC

Applications:

- 318 / 340 / 360 Chrysler

Tru Trac Serpentine Systems Include:

- Polished Powermaster 105 amp 1-wire alternator
- Polished billet aluminium 1pc. alternator fan & pulley
- Natural finish Edelbrock standard rotation water pump
- Polished billet aluminium water pump pulley
- Polished billet aluminium bridge bracket
- Patent-pending polished billet aluminium tensioner
- Polished billet aluminium tensioner pulley
- Polished billet aluminium crankshaft pulley
- Polished ARP 12-point stainless steel fasteners
- Goodyear Gatorback 6-rib serpentine belt
- Comprehensive installation manual
- Select pulleys are hard-coat anodized for increased durability in high wear areas

Kits With AC Include:

- Polished Sanden SD-7 AC compressor
- Polished billet aluminium AC compressor clutch cover
- Patented polished billet aluminium AC compressor manifold

Kits With Power Steering Include:

- Natural finish Maval Mfg. power steering pump with AN fittings
- Polished billet aluminium power steering pulley

Chrysler Small Block

BS13800	with A/C & Power Steering
BS13820	with A/C ONLY
BS13805	With Power Steering ONLY
BS13825	with NO A/C & NO Power Steering

Billet Specialties

Tru Trac for Chrysler 426, 472, & 528 HEMI & BIG BLOCK 383 & 440 B/RB

Billet Specialties' innovative mounting system allows any type of cylinder head or manifold to be used.

Designed For:

- '66 & UP 426 STREET HEMI • 426, 472, & 528 HEMI CRATE
- BIG BLOCK 383 & 440 B/RB

KITS INCLUDE:

- Polished 105 amp one-wire Powermaster alternator
- Polished 1pc. billet aluminium alternator fan & pulley
- Polished Sanden SD-7 A/C compressor
- Polished compressor clutch cover
- Patent-pending polished billet aluminium A/C compressor manifold
- New Mopar Performance water pump & housing
- Polished billet aluminium water pump pulley
- Patent-pending polished billet aluminium tensioner designed specifically for the Tru Trac system
- Polished billet aluminium tensioner pulley
- New power steering pump with AN fittings
- Polished billet aluminium power steering pulley
- Polished billet aluminium crankshaft pulley
- Polished billet aluminium idler pulleys with hardcoat anodizing on high-wear surfaces for added durability
- Polished billet aluminium bridge bracket
- Polished 12-point ARP stainless fasteners throughout
- Comprehensive instruction booklet included

BS14800	with A/C & Power Steering
BS14820	with A/C ONLY
BS14805	with Power Steering ONLY
BS14825	with NO A/C & NO Power Steering



Billet Specialties

PREMIUM TRU-TRAC PULLEY SYSTEMS

Limited Stock, Available By Special Order.

Every bracket and pulley is machined from 6061-T6 billet aluminium for exceptional strength and rigidity. Polished stainless steel fasteners feature a 12-point head for optimum contact and an aggressive finished look. Select pulleys are hard coat anodized for increased durability, preventing wear from the backside of the serpentine belt. The exclusive patent-pending billet tensioner eliminates the need for constant re-adjustment.

Premium Tru Trac Serpentine Systems Offer:

- Polished billet aluminium 140 amp 1-wire alternator
- Polished billet aluminium 1pc. alternator fan & pulley
- Edelbrock EnduraShine™ reverse rotation water pump (SB/BB Chevy Only)
- Polished billet aluminium water pump pulley
- Polished billet aluminium bridge bracket
- Patent-pending polished billet aluminium tensioner
- Polished billet aluminium tensioner pulley
- Polished billet aluminium crankshaft pulley
- Polished ARP 12-point stainless steel fasteners
- Goodyear Gatorback 6-rib serpentine belt
- Comprehensive installation manual
- Select pulleys are hard-coat anodized for increased durability in high wear areas

Kits With AC Include:

- Polished Sanden SD-7 AC compressor
- Polished billet aluminium AC compressor clutch cover
- Patented polished billet aluminium AC compressor manifold

Kits With Power Steering Offer:

- Polished Maval Mfg. power steering pump with AN fittings
- Polished billet aluminium power steering pulley

IMPORTANT: Although a supercharger or turbo set-up may work with the Tru Trac Pulley System, the system is NOT designed to be compatible with any specific brand or type of forced induction.

Open Box Tru Trac Systems are NOT RETURNABLE.

PREMIUM TRU-TRAC KITS Continued

LS1/LS6 Chevrolet

BS13400P	With polished A/C & P/Steering
BS13400PA	With polished A/C, P/S & Billet Alternator
BS13420A	With A/C & Billet Alternator, Without P/S
BS13405P	Without A/C With Power Steering
BS13405PA	Without A/C, With P/S & Billet Alternator
BS13425A	Without A/C, Without Power Steering

Small Block FORD

Includes Billet Timing Cover

BS13600P	With polished A/C & P/Steering
BS13600PA	With polished A/C, P/S & Billet Alternator
BS13620A	With A/C & Billet Alternator, Without P/S
BS13605P	Without A/C With Power Steering
BS13605PA	Without A/C, With P/S & Billet Alternator
BS13625A	Without A/C, Without Power Steering

Big Block FORD

Includes Billet Timing Cover

Part	Description
BS14600P	With polished A/C & P/Steering
BS14600PA	With polished A/C, P/S & Billet Alternator
BS14620A	With A/C & Billet Alternator, Without P/S
BS14605P	Without A/C With Power Steering
BS14605PA	Without A/C, With P/S & Billet Alternator
BS14625A	Without A/C & P/S, With Billet Alternator

FORD FE

BS14700P	With polished A/C & P/Steering
BS14700PA	With polished A/C, P/S & Billet Alternator
BS14720A	With A/C & Billet Alternator, Without P/S
BS14705P	Without A/C With Power Steering
BS14705PA	Without A/C, With P/S & Billet Alternator
BS14725A	Without A/C & P/S, With Billet Alternator

Small Block Chrysler

BS13800P	With polished A/C & P/Steering
BS13800PA	With polished A/C, P/S & Billet Alternator
BS13820A	With A/C & Billet Alternator, Without P/S
BS13805P	Without A/C With Power Steering
BS13805PA	Without A/C, With P/S & Billet Alternator
BS13825A	Without A/C & P/S, With Billet Alternator

HEMI / Big Block Chrysler

BS14800P	With polished A/C & P/Steering
BS14800PA	With polished A/C, P/S & Billet Alternator
BS14820A	With A/C & Billet Alternator, Without P/S
BS14805P	Without A/C With Power Steering
BS14805PA	Without A/C, With P/S & Billet Alternator
BS14825A	Without A/C & P/S, With Billet Alternator

Pontiac

BS14900P	With polished A/C & P/Steering
BS14900PA	With polished A/C, P/S & Billet Alternator
BS14920A	With A/C & Billet Alternator, Without P/S
BS14905P	Without A/C With Power Steering
BS14905PA	Without A/C, With P/S & Billet Alternator
BS14925A	Without A/C & P/S, With Billet Alternator

TRU-TRAC ADD-ONS & UPGRADES

While the new premium TruTrac kits come with your choice of fully polished upgrades they are also available separately to upgrade your standard Tru Trac serpentine systems.



140 Amp Billet Aluminium Alternator

Alternator pulley not included

Not for use with V-Trac, FM or Independent brackets

BS12050	Polished
BSBLK12050	Black Anodised

Edelbrock Endurashine Waterpump

For Small Block & Big Block Tru Trac

BS12030	S/B Chev Water Pump
BS12035	B/B Chev Water Pump

Polished Maval Power Steering Pump

For all Tru Trac Serpentine kits

- -6 & -10 AN Fittings installed
- 35GPM or 2 GPM Flow Rate
- Pre-set pressure at 1200 PSI
- Pulley is not included

BS12025	3.5 GPM Power Steering Pump
BS1300	2 GPM Power Steering pump

Small Block Chevrolet

Kits come with Polished Water Pump.

Part	Description
BS13220WP	With polished A/C & P/Steering
BS13220WPA	With polished A/C, P/S & Billet Alternator
BS13120W	With polished A/C, Without Power Steering
BS13220WA	With A/C & Billet Alternator, Without P/S
BS13225WP	Without A/C With Power Steering
BS13225WPA	Without A/C With P/S & Billet Alternator
BS13125W	Without A/C Without Power Steering
BS13125WA	Without A/C & P/S, With Billet Alternator

Big Block Chevrolet

Kits come with Polished Water Pump.

BS14220WP	With polished A/C & P/Steering
BS14220WPA	With polished A/C, P/S & Billet Alternator
BS14120W	With polished A/C, Without Power Steering
BS14220WA	With A/C & Billet Alternator, Without P/S
BS14225WP	Without A/C With Power Steering
BS14225WPA	Without A/C With P/S & Billet Alternator
BS14125W	Without A/C Without Power Steering
BS14125WA	Without A/C & P/S, With Billet Alternator



SHOWS SMALL BLOCK CHEVY



Tru Trac Serpentine: Black Anodized Finish

The popular Tru Trac is now available in a black anodized finish for that stealth high-tech look. Each part begins with an award winning polished surface and is then anodized black for a flawless deep black durable finish. Complimented with a polished alternator and AC compressor for a striking contrast that will demand all the attention that you can handle, make a statement with Tru Trac – Black.

Black anodized Tru Trac systems include:

- Polished Powermaster 105amp 1-wire alternator
- Black anodized billet aluminium alternator pulley
- Natural finish high-performance water pump
- Black anodized billet aluminium water pump pulley
- Black anodized billet aluminium bridge bracket
- Patent-pending black anodized billet aluminium tensioner engineered for the Tru Trac system
- Black anodized billet aluminium tensioner pulley
- Black anodized billet aluminium crankshaft pulley
- Polished ARP 12-point stainless steel fasteners
- Goodyear Gatorback serpentine belt
- Comprehensive installation manual
- Select pulleys are hard-coat anodized for increased durability in high wear areas

Kits with AC include:

- Polished Sanden SD-7 compressor
- Black anodized billet aluminium AC clutch cover
- Patented black anodized billet aluminium compressor manifold

Kits with power steering include:

- Natural finish Maval Mfg. power steering pump with AN fittings pre-installed
- Black anodized billet aluminium power steering pulley

Small Block Chevrolet

BSBLK13220	With AC	With Power Steering
BSBLK13120	With AC	Without Power Steering
BSBLK13225	Without AC	With Power Steering
BSBLK13125	Without AC	Without Power Steering

Big Block Chevrolet

BSBLK14220	With AC	With Power Steering
BSBLK14120	With AC	Without Power Steering
BSBLK14225	Without AC	With Power Steering
BSBLK14125	Without AC	Without Power Steering

LS1/LS6 Chevrolet

BSBLK13400	With AC	With Power Steering
BSBLK13420	With AC	Without Power Steering
BSBLK13405	Without AC	With Power Steering
BSBLK13425	Without AC	Without Power Steering

Small Block FORD

BSBLK13600	With AC	With Power Steering
BSBLK13620	With AC	Without Power Steering
BSBLK13605	Without AC	With Power Steering
BSBLK13625	Without AC	Without Power Steering

Big Block FORD

BSBLK14600	With AC	With Power Steering
BSBLK14620	With AC	Without Power Steering
BSBLK14605	Without AC	With Power Steering
BSBLK14625	Without AC	Without Power Steering

FORD FE

BSBLK14700	With AC	With Power Steering
BSBLK14720	With AC	Without Power Steering
BSBLK14705	Without AC	With Power Steering
BSBLK14725	Without AC	Without Power Steering

Small Block Chrysler

BSBLK13800	With AC	With Power Steering
BSBLK13820	With AC	Without Power Steering
BSBLK13805	Without AC	With Power Steering
BSBLK13825	Without AC	Without Power Steering

HEMI / Big Block Chrysler

BSBLK14800	With AC	With Power Steering
BSBLK14820	With AC	Without Power Steering
BSBLK14805	Without AC	With Power Steering
BSBLK14825	Without AC	Without Power Steering

Pontiac

BSBLK14900	With AC	With Power Steering
BSBLK14920	With AC	Without Power Steering
BSBLK14905	Without AC	With Power Steering
BSBLK14925	Without AC	Without Power Steering

OIL FILTERS



SYSTEM 1 Oil Filters

The System 1 Oil Filter spins right on where the standard oil filter is usually installed. It can be switched from car to car as you wish. The Filter itself was built for high powered race cars because they needed a filter they could inspect. The System 1 Filters real value is in it's lifetime use and obvious environmental benefits.

High Flow Inlet - will not restrict lubricant flow or contribute to pressure reduction

Die Cast Aluminum Housing - black anodized

Anti-Aeration Filter Cone - extra strong construction, manufactured from DuPont glass impregnated ZYTEL.

Easy To Clean - in soap or solvent, will not absorb waste or debris.

Tattle-Tale Inspection - quick removal and easy to read filtration screen gives early warning of internal problems.

High Flow By-Pass - maintains maximum efficiency to 5 Microns before activation. Made from DuPont glass impregnated ZYTEL and sonic welded to provide a completely secure unit.

Dual O-Rings - double the sealing power. Double the security.

Universal Mounting Inserts - adapts housing to most popular engines and remote filter systems.

138 Square Inches of Stainless Steel - Delivers greater "filtration time" while promoting full system pressure. Double dutch twill, woven stainless steel mesh, is durable enough to last a lifetime. Will not tear, deteriorate or collapse under extreme pressure and extended use.

Larger Housing - increases oil and cooling capacity.

Short housing available.

Removable Inspection Cap - provides quick, easy access to filter without removing the entire housing. Uses 13/16" drive wrench.

3" DIAMETER BILLET SPIN

ON 35 MICRON OIL FILTERS

These Billet 3" diameter 35 micron Spin on Oil Filters are machined from 6061-T6 Billet Aluminium and Black Anodized, for long lasting protection. These cleanable 35 micron filters, fits most late model 3" diameter filter applications with a 3 3/4" short or 5 1/4" long filters. Universal threaded adapter sizes are 3/4-16 and 13/16-16. Metric filter threaded adapters are 18 mm, 20 mm and 22 mm x 1.5 threads.

3" diameter filters have single O-ring groove for block mounting

3-3/4" Long 45 Micron Black Anodised

With Metric Threads (Billet)

SY210-314-B

3-3/4" Long 35 Micron Black Anodised

With Universal Threads (Billet)

SY210-361

5-1/4" Long 35 Micron Black Anodised

With Metric Threads (Billet)

SY210-514

5-1/4" Long 35 Micron Black Anodised

With Universal Threads (Billet)

SY210-561

REPLACEMENT 35 MICRON FILTER ELEMENTS

35 Micron Element Suit 210-314/210-361

SY208-882

35 Micron Element Suit 210-514/210-561

SY208-883

BILLET 3-3/4" Dia

Spin On Oil Filters

3-3/4" Long 45 Micron, Black Anodised with Imperial Threads **SY209-314B**

3-3/4" Long 45 Micron, Black Anodised with Metric Threads **SY209-361B**

5-3/4" Long 45 Micron, Black Anodised with Imperial Threads **SY209-514B**

5-3/4" Long 45 Micron, Black Anodised with Metric Threads **SY209-561B**

5-3/4" Long 75 Micron, Black Anodised with Imperial Threads **SY209-571B**

5-3/4" Long 75 Micron, Black Anodised with Universal Threads, Buna O-Rings **SY209-371B**

REPLACEMENT BILLET SPIN ON OIL FILTER ELEMENTS

45 Micron Element Suit 209-314B/209-361B

SY208-360

35 Micron Element Suit 209-531B

SY208-530

45 Micron Element Suit 209-561B

SY208-560

75 Micron Element Suit 209-571B

SY208-570

75 Micron Element Suit 209-314B/209-361B

SY208-370

PRO SERIES BILLET

SPIN ON OIL FILTER

This Pro Series Billet Oil Filter is our newest purpose built oil filter. Designed for Blown Alcohol, Injected Nitro, Fuel Dragsters, Funny Cars & Pro Mods, this billet constructed filter housing and inspection cap is machined from 6061-T6 aluminium and anodized black for a long lasting superior finish! Incorporated into this filter is a 75 micron element designed for the rigors of 60 & 70 weight motor oil to lube your power plant with little to no restriction. Has a single O-Ring groove at the mounting surface and fits all System 1 Billet Remote Mounts (not included) with 1"12 threads. Flows 30 GPM. Also available with 35 or 45 micron element for lighter weight oils. 3-3/4" O.D. X 5-3/4" Long

75 Micron Billet Pro Series Oil Filter,

Buna O-Rings (Alcohol) 209-571-BPS

75 Micron Billet Pro Series Oil

Filter, Viton O-Rings (Nitro) SY209-571-BPS_1



BILLET NITRO HP-6 STYLE OIL FILTERS 4-1/4"

DIAMETER

5-1/4" Long 45 Micron, 1 1/2-12 threads, Buna O-Rings	SY210-005
5-1/4" Long 75 Micron, 1 1/2-12 threads, Buna O-Rings	SY210-005-7
5-1/4" Long 75 Micron, 1 1/2-12 threads, Viton O-Rings	SY210-005-7-1
Replacement Buna O-Rings	SY205-170
Replacement Viton O-Rings	SY205-170-1
Replacement 45 Micron Filter For SY210-005	SYHP45
Replacement 75 Micron Filter For SY210-005	SYTF100

Filter Parts

O-Ring kit for 3" OD filters	SY205-0130
O-Ring kit for 4-1/4" OD filters	SY205-0100
O-Ring kit, Viton Material Suit Nitro Fuel	SY205-100-1
O-Ring Kit Suit Billet HP6 Oil Filters Viton (Nitro)	SY205-010-1
O-Ring Kit Suit 2" Inline Fuel/Oil Filters Buna (Alcohol)	SY205-200
O-Ring Kit Suit 2" Inline Fuel/Oil Filters Viton (Nitro)	SY205-200-1
Element 45 Micron for 31/4" x 3-3/4" filters	SY208-360
Thread Insert 13/16"-16 - Chev/Holden	SY216-0113
Thread Insert 3/4"-16 - Chrys/Ford/Nissan	SY216-0134
Thread Insert 18mm-1.5 - V6 Holden	SY216-0118
Thread Insert 20mm-1.5 - Mazda/Subaru	SY216-0120
Thread Insert 22mm-1.5 Ford Modular V8	SY216-0122
Thread Insert 11/16 ID - Mercury Marine	SY216-0111
Bottom Plate With Bypass for 3" OD filters	SY214-0300
Bottom Plate Non Bypass for 3" OD filters	SY214-0330
Bottom Plate With Bypass for 4-1/4" OD filters	SY214-0460
Bottom Plate Non Bypass for 4-1/4" OD filters	SY214-0440
Replacement Spin-On Bottom Cap For 3-3/4" Oil Filters	SY217-0300
Replacement Spin-On Bottom Cap For 4" Oil Filters	SY217-0400

*NOTE: Whenever using these filters as oil filters the bypass valve must be used. For petrol use non-bypass fitting

CROSS REFERENCE TO POPULAR RYCO NUMBERS

- Check dimensions for clearance

RYCO	3" DIAMETER	4-1/4" DIAMETER
Z9	SY209-534 (5-1/4" L)	SY209-512561 (6" L)
Z10	SY209-334 (3-3/4" L)	SY209-312361 (4" L)
Z24		SY209-312361 (4" L)
Z40	SY209-313 (3-3/4" L)	
Z56B	SY209-320 (3-3/4" L)	SY209-314361 (4" L)
Z79A	SY209-320 (3-3/4" L)	
Z89A	SY209-334 (3-3/4" L)	SY209-312361 (4" L)
RYCO	3" DIAMETER	4-1/4" DIAMETER
Z142A	SY209-320 (3-3/4" L)	
Z148	SY209-320 (3-3/4" L)	
Z158	SY209-334 (3-3/4" L)	
Z160	SY209-313 (3-3/4" L)	
Z170	SY209-334 (3-3/4" L)	SY209-312361 (4" L)
Z172	SY209-334 (3-3/4" L)	SY209-312361 (4" L)
Z386	SY209-334 (3-3/4" L)	
Z411	SY209-320 (3-3/4" L)	
Z418	SY209-334 (3-3/4" L)	
Z423	SY209-334 (3-3/4" L)	
Z426	SY209-320 (3-3/4" L)	
Z432	SY209-334 (3-3/4" L)	
Z495	SY209-320 (3-3/4" L)	
Z516		SY209-314361 (4" L)

BILLET INLINE OIL FILTERS

Billet Filter housing uses a stainless steel screen element that will not tear, deteriorate or collapse under extreme pressures. Quickly disassembles for inspection and cleaning. Can be used for many different applications. Filter weight is 14-1/2oz, size 2" diameter x 9" long.

Description	Part No.
Billet Inline Oil Filter, -10AN Ends, 75 Micron	SY202-202710
Billet Inline Oil Filter, -12AN Ends, 75 Micro	SY202-202712
Billet 2-Bolt Flat Filter Mounting Clamp, 2" O.D Filter	SY204-002000
Billet 2-Bolt Flat Filter Mounting Clamp, 2.5" O.D Filter	SY204-002250
Billet Inline Filter Mounting Clamp, 1-1/4" tubing, 2" O.D Filter	SY204-201250

Accessory Return Port End Cap

Fits 400 Series Filters Peterson's return port cap features two -6AN ports for fuel return fittings. Includes two -6 AN to -6 AN fittings.

PFS09-0400-008	-12 Inlet Filter Cap w/ -6 AN Accessory Ports
PFS09-0400-005	-10 Inlet Filter Cap W/ -6AN Accessory Ports



BILLET INLINE SCAVENGE FILTERS

These extra large scavenge filters have been bench tested to flow in excess of 24 gallons per minute. Billet Filter housing uses a stainless steel screen element that will not tear, deteriorate or collapse under extreme pressures. Quickly disassembles for inspection and cleaning.

Size 2-1/4" diameter x 9" long.

Description Billet Inline Oil Filter,	Part No.
-16AN Ends, 75 Micron	SY202-225716



FILTER FITTING SCREEN KIT

- Install in fittings to trap metal chips and debris
- Ideal for use on dry sump pumps, external oil pumps, rear end pumps, etc.
- 304 stainless steel screen uses .015" diameter 16 mesh wire
- Dimensions: .817" O.D. x 1.75" long
- Includes epoxy cement and 4 screens per kit
- Machining required for installation



MO23965 Filter Fitting Screen Kit.