

POWER STEERING HOSES & FITTINGS



SAGINAW POWER STEERING FLOW CONTROL VALVE
Designed to fit Saginaw power steering pumps. Replaces factory valve in light steering applications to restrict flow to 2gpm. Stops fluid foaming in power steering tank.
AF64-2915 2gpm power steering flow control valve



Power Steering Adaptor Fittings

Part No	Description
AF353-06SS	1/2"-20 Inverted flare to -6 S/S PS Adaptor
AF354-06SS	5/8"-18 Inverted flare to -6 S/S GM/Sag PS Box
AF355-06SS	11/16"-18 Inverted flare to -6 S/S GM/Sag PS Box
AF350-06S	M14 x 1.50 O-ring to -6 Alloy O-ring Style
AF351-06S	M16 x 1.50 O-ring to -6 Alloy GM/Sag PS Box O-ring Style
AF352-06SS	M18 x 1.50 O-ring to -6 S/S GM/Sag PS Box O-ring Style



Stainless Braided Hose Kit - Remote Reservoir (GM-STYLE FITS FLAMING RIVER POWER RACK)

Includes stainless braided lines with fittings for installing Flaming River power rack and pinion with a remote reservoir. Simplifies installation with a clean, polished appearance.

Stainless Braid Hose Kit For Remote Reservoir FR1610



Power Steering Hose Kit

Power steering hose kit for Saginaw power steering pumps with 5/8" flare fittings. Includes pressure and return hoses.

Power Steering Hose Kit RPCR3914



Power Steering Hose Kit

Finish your Tru Trac or V-Trac installation the right way with a premium Billet Specialties hose kit. We take the guesswork out of power steering hoses to save you time and money. Each kit is supplied with enough adapters to cover most popular GM boxes and Ford type racks. Quality fittings and hose from Russell Performance are used exclusively to ensure reliability.

Applications:

- 1965-78 GM 800 Steering Gear Box (Metric & SAE)
- 1974-77 Mustang II Rack & Pinion
- CPP GM 500 Steering Gear Box
- GM Rack & Pinion
- Flaming River Rack & Pinion
- Dodge Omni Rack & Pinion

Power Steering Hose Kit



BS77900



26GPM Flow Control Valve

Billet specialties power steering pumps exceed recommended "flow" for Ford and some GM power steering racks. This may cause excessive heat or frothing of power steering fluid. The use of this flow control valve will correctly reduce flow to the OEM spec of 26GPM. These are recommended when using a Billet Specialties Power Steering Tru-Trac system or new GM style pump.

Flow Control Valve BSRP1300

BODIES



UNITED PACIFIC COUPE BODY

1932 FORD COMPLETE 5-WINDOW BODY SHELL

Eighty years of rust and neglect has been tough on the original 5-window coupes. Starting your project with a new steel body from United Pacific Industries is the best way to make your dream hot rod a reality. We've created precision tooling that accurately produces every panel exactly as original. Throughout the process of manufacturing the new 1932 5-Window body shell, we had many decisions to make regarding tooling design, modern enhancements, and material specifications. Our philosophy from the beginning was to make it just the way it was! In fact, there are only two options:

- 1) Original open insert roof, or a steel filled roof.
- 2) With cowl vent, or without

The new body shell is stock height, and includes the hardwood inner structure, both doors with door latches, and deck lid hinged as a trunk. Firewall and dash sold separately. The body shell is black EDP coated to keep your new steel fresh and un-rusted.

BODY SHELL INCLUDES:

- Black EDP Coated to Keep Your New Steel Fresh and Un-rusted
- Stock Height
- Includes Hardwood Inner Structure
- Includes Both Doors with Door Latches
- Deck Lid Hinged as Trunk
- Firewall and Dash Sold Separately

Full range of body panels, floor panels and all interior structure components available separately. Call Rocket for more information.

Description

1932 Ford 5-Window Coupe Body Shell

Part No.

UPB20000-A



All Steel Model A Roadster Body

The Brookville all steel Model A is the most accurate reproduction body you can buy.

As with all Brookville bodies, we use the same gauge steel as the originals and every

part of the body is interchangeable with the originals.

- Smooth Cowl Cover
- Smooth Flat Floors
- 4" Recessed Firewall
- 32 Style Dash Installed
- Steel Front Floor for 4" Recessed Firewall
- Smooth Trunk
- Smooth Deck Former
- Comes in Hardwood Shipping Crate

Description

1928-29 Stock Roadster Body for Model A Frame

1930-31 Stock Roadster Body for Model A Frame

Part No.

BRAF-100A

BRAF-100B



All Steel 1932 3 Window Coupe Body

Using the most sophisticated engineering and digital measuring methods we have been able to create a truly accurate yet more precise reproduction of this classic body. Our three window features the same gauge metals, the stamping details, internal bracing and wood components found in the originals. Our car does benefit from modern welding and finishing techniques and from our exclusive one piece whole body side stamping but every panel from this new body is still interchangeable with the factory originals.

- Smooth Cowl Top
- Smooth Trunk Lid
- Smooth Doors with Stock Hinges
- Smooth Face Dash Installed
- Steel Front Floor
- Flat Hotrod Style Floor in Seat Area
- Stock or Flat Firewall Sold Separately
- Comes in Hardwood Shipping Crate

Description

1932 Stock 3 Window Coupe Body

Part No.

BRB-200



All Steel 1932 Roadster Body

The Brookville all steel Deuce is the most accurate reproduction body you can buy. As with all Brookville bodies, we use the same gauge steel as the originals and every part of the body is interchangeable with the originals.

- Smooth Cowl Top • Smooth Trunk or Rumble Lid • Smooth Doors with Stock Hinges • Steel Front Floor
 - Flat Hotrod Style Floor in Seat Area • Stock or Flat Firewall Sold Separately • Comes in Hardwood Shipping Crate
- 1932 Stock Roadster Body BRB-100**

PANELS & BRACES

Radiator Splash Apron - 1932

Die Stamped smooth rolls
(VI18-17766/67-S for hardware kit)
VIB-16527 1932 Passenger & Pickup
VIB-16527-CHP 1932 Chopped 2"



Radiator Splash Aprons

Die Stamped. Black powder coated aprons
UPA6054 1932 Car & Pickup
UPA6063 1932 2" Chopped
UPA6062 1928-29 Die Stamped
UPA6053 1930-31 Die Stamped



Rear Frame

Horn Covers - Steel

Includes rubber channel and plugs.

VIB-16399 1932 Die Stamped Steel



Large Front Fender Braces - 1933-34

Excellent die stamped steel front fender braces are made to vintiques exacting standards. Sold in pairs. painted black.
VI40-16047-8 1933-34



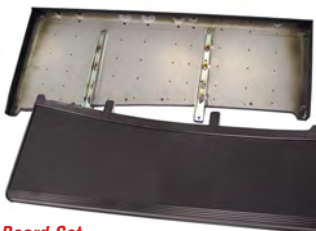
Front Fender to Fender Brace Bolt Set

Note: 1928-32 takes 1 set for one car.
1933-34 takes 2 sets for one car.
Set includes: 2 smooth head special carriage bolts, 2 washers and 2 nuts of like material.
VIB-16026-BK 1928-34 Black
VIB-16026-SS 1928-34 Polished Stainless



Running Board Braces

Die Stamped and painted black. Sold in sets of 4
VIB-16485-S 1932 Passenger & Pickup
VI40-16485-S 1933-34



1932 Running Board Set

Steel with vulanised rubber with all the detail of the originals.
VIB-16450/1-V

1933-34 Running Board Set

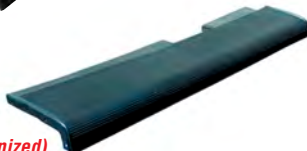
Steel with vulanised rubber with all the detail of the originals.
BD40-16450/1



1935-36

Running Board Set

Steel with vulanised rubber with all the detail of the originals.
BD48-16450/1-BD



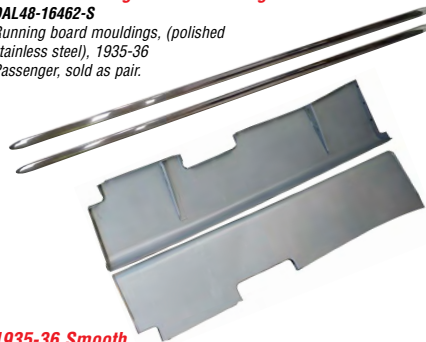
Running Boards (Vulcanized) Fits - 1935-36 Car

These boards are authentic vulcanized rubber-to-steel, as sturdy, tough and beautiful as the originals. They're made of real rubber, not a hard vinyl or plastic composite, and have sharp, crisp detail. You'll find no rough, irregular edges or excess material. Now you can finish your car with boards that have the exact same look, feel and strength as Henry's originals.
Sold as pairs
BD48-16450-BD

1935-36 Running Board Mouldings

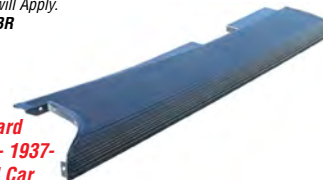
DAL48-16462-S

Running board mouldings, (polished stainless steel), 1935-36 Passenger, sold as pair.



1935-36 Smooth Steel Running Boards

Sleek, all steel boards that are ready for prep and paint. Leave un-covered for today's "smooth" street rod look. Sold by the pair. **OVERSIZE** - Extra Shipping will Apply.
BD48-16450/1-BR



Running Board Covers Fits - 1937-39 Standard Car

We were the first to develop and design a catch lip front edge. Each style moulded with the finest rubber. Excellent fit. Pair.
BD78-16450/1



1939 Deluxe-1940 Cars Running Board Set

Steel with vulanised rubber with all the detail of the originals.
BD91A-16450/1-BD



1928-29 Fenders

Description	Part No.
1928-29 Roadster & Coupe Steel Front Fenders	BRA-188-ASL & BRA-188-ASR
1928-29 Roadster & Coupe Steel Rear Fenders	BRA-183-AL & BRA-183-AR
1928-29 Roadster & Coupe Front Fender Braces	BRA-188-ABR

1928-29 Running Boards

Description	Part No.
1928-29 Running Boards w/Mat & Stainless Trim	BRA-185-ASS
1928-29 Smooth Running Boards	BRA-185-ASM
1928-31 Running Board Braces (Set of 4)	BRA-182-BR

1930-31 Fenders

Description	Part No.
1930-31 Roadster & Coupe Steel Front Fenders	BRA-188-BSL & BRA-188-BSR
1930-31 Roadster & Coupe Steel Rear Fenders	BRA-183-BL & BRA-183-BR
1930-31 Roadster & Coupe Front Fender Braces	BRA-188-BBR

1930-31 Running Boards

Description	Part No.
1930 Running Boards w/Mat & Stainless Trim	BRA-185-B2SS
1931 Running Boards w/Mat & Stainless Trim	BRA-184-B1SS
1930-31 Smooth Running Board	BRA-185-BSM
1928-31 Running Board Braces (Set of 4)	BRA-182-BR

1932 Fenders

Description	Part No.
1932 Steel Front Left Fender	BRB-188-L
1932 Steel Front Right Fender	BRB-188-R
1932 Roadster & Coupe Steel Rear Left Fender	BRB-183-L
1932 Roadster & Coupe Steel Rear Right Fender	BRB-183-R
1932 Sedan Steel Rear Left Fender	BRB-483-L
1932 Sedan Steel Rear Right Fender	BRB-483-R
1932 Front Fender Braces	BRB-188-BR

1932 Running Boards

Description	Part No.
1932 Smooth Running Boards	BRB-185-SM
1932 Stock Running Boards (Uncovered)	BRB-185



1928-29 All Steel Model "A" Fender Package

Package includes:

- Steel Front Fenders
- Running Boards
- Hood Shelves
- Running Board Braces
- Steel Rear Fenders
- Running Board Aprons
- Front Fender Braces
- Front Radiator Apron

BR1002-AS 28-29 Steel Front & Rear Fender Package



1930-31 All Steel Model "A" Fender Package

Package includes:

- Steel Front Fenders
- Running Boards
- Front Fender Braces
- Front Radiator Apron
- Steel Rear Fenders
- Running Board Aprons
- Running Board Braces

BR1002-BS 30-31 Steel Front & Rear Fender Package



1932 Fender & Running Board Complete Packages

Packages come standard with the following:

- 32 Steel Front Fenders
- 32 Steel Rear Fenders
- Front Fender Braces
- Running Boards
- Front Radiator Apron
- Rear Frame Horn Covers

BRB-1002 32 Steel Front & Rear Fender Package with Smooth Boards

BRB-1002-RC 32 Steel Front & Rear Fender Package with Molded Rubber Covered Boards



1932 Steel Firewalls

Steel firewalls for our 1932 Roadster and 3 Window Coupe bodies. Also fits original bodies.

Description
Flat with Stock Bead & Steel Feet
Stock with Stock Bead & Steel Feet

Part No.
BRB-1015
BRB-1015STOCK



1928-32 FORD

Deck Lids

Coupe & Roadster Rumble Lid
BRA-1059-AT 1928-29
BRA-1059-BT 1930-31
BRA-1059TSM 1932 "SMOOTH"



United Pacific Rear Fenders for 1933-34 Ford Passenger Cars

Die stamped with high quality 20 gauge sheetmetal. Features all of the original contour and mounting detail. Beautiful edge bead with inner reinforcement rod just like the original design. Black EDP coated.

Right Hand/US Passenger Side **UPB24034**
Left Hand/US Drivers Side **UPB24033**



Real Hot rod products made by hot rodders. Roof inserts, door skins & Inner door braces for your Hot rod.

Roof inserts:

True custom fit roof insert panel made of 18 gauge steel, shaped on a Yoder power hammer. Fitted to individually made fixtures to assure perfect contour & excellent fit.

Available for ;
1928-31 Ford Coupe
1932 Ford 3w & 5W coupe
1933-34 Ford 3W coupe
1933-34 Ford 5W coupe
1935-36 Ford 3W coupe
1935-36 Ford 5W coupe
1932-35 Chev coupe
1932 Ford 2dr sedan
1934-36 Ford sedan



Door Skins:

Each of these panels is hand shaped on a Yoder power hammer. All door skins are made of 19 gauge steel & are available with or without the belt line bead.

Available for ;
1928-31 Ford Coupe
1928-31 Ford sedan
1937-40 Coupe
1937-40 Sedan
1932 Ford 3w & 5W coupe
1932-34 Ford pickup
1933-34 Ford 3W coupe
1933-34 Ford 5W coupe
1933-34 Ford roadster/Cabriolet
1935-36 Ford 3W coupe
1935-36 Ford 5W coupe
1935-36 Ford Pickup
1932 Ford 2dr sedan
1934-36 Ford 2dr sedan



Steel Speed Blister

Drawn from 16-gauge steel, this blister is an awesome piece that can be used for everything from hood side blisters to making miniature belly tanks. The blisters are 18 inches long by 6 inches wide at the fatest part of the belly and they're 3-1/4 inches deep at the waist. Also, because of the way they are carefully drawn, they can be easily cut out with a flange and bolted or rivited into a hood side or top for a very cool look. Sold Individually

SO169-10002 Steel Blister



1932 Roadster Dash

1932 Roadster Dash Smooth without Oval Recess
BRB-139



1930-31 Ford Closed Car Dash

1932 style to fit A-Model
BRA-136-BFCC

1932 FORD Closed Car Dash Panels Fits 1932 Closed Cars, 5 Window Coupe, Tudor, Fordor & Sedan Delivery

3 styles of '32 dash panels are made using high precision tooling to give your restoration or rod that fresh factory look with a beautiful fit. Each is made of 100% heavy guage steel finished in our black EDP coating, comes ready to paint & install.



Early '32 Style Dash Panel

With recessed top belt rail. Includes gauge cluster opening.
BDB-300



Late '32 Style Dash Panel

With raised top belt rail. Includes gauge cluster opening
BDB-301



Custom '32 Style Dash Panel

With raised top belt rail. No gauge cluster opening
BDB-302



Chrome Bumper

Front Or Rear
BD40-1775 1933-34 CAR
BD68-1775 1936 CAR



Panels & Braces Cage Nut

Welds on for fastening various sheet metal parts and braces.

BD3145-C 5/16in. x24
RD3145-D 3/8in x24



1934 Ford Passenger Car Chrome Bumper

- Heavy Stamped Steel as Original
- Quality Chrome Plating with 1 Year Limited Warranty
- 1934 is 26 inches Between Bolts

UPA20094



CHROME BUMPER

Our high-grade steel, super chrome and perfect details make our bumpers a show-quality masterpiece. Fits front or rear.

1932 Car, Pickup **BDB-17752**



BUMPER END CAPS

Most folks don't even know that these existed on the original Ford. All stainless steel to "cap the wrap" on the end of the bumper. For super detail put them in top and bottom. Set of 4.

1932 Ford **BDB-17760-K**



BUMPER BOLT MOUNTING KIT

For use without bumper guards at inner holes. Forged Steel with Oval Polished Stainless Steel Cover Includes stainless nuts & washers. Set of 4.

1933-40 Car & 1934-41 Pickup 40-17908-K



BUMPER BOLT

Forged with Polished stainless steel cover. 2 required per bumper. Includes nuts and lock-washers. Set of 4.

1932 Ford
BDB-17758-K



BUMPER END MOUNTING BOLT KIT

Don't settle for a longer than needed coarse thread stove bolt. Drake puts it all together with a fine-threaded and correctly headed specially made bolt. We even toss in the lock-washer and nut in the correct black oxide finish. Includes 2 bolts, 2 lock-washers and 2 nuts for one bumper. 7/16-20

1933-36 Car & Pickup BD40-17758-EB



Fender Braces

Heavy gauge stamped steel painted gloss black. Features correct curvature, perfect in every detail just like the original. Fits front fender towards the rear just in front of the running board.

Front Fender Braces

VI40-16094-A	1933-1934 Passenger
BD40-16094-A	1933-1934 Passenger
BD50-16094	1935-1937 Pickup
BD68-16094	1935-1936 Passenger
BD78-16094	1937-1938 & 1939 Standard Passenger

Rear Fender Braces

BD40-17787-C	1934 Car, Except Victoria
BD48-16341	1935-1936 Passenger
BD78-16341	1937-1941 Passenger
BD50-16341	1935-1936 Pickup, 1935-1937 Panel
BD81C-16341	1938-1938 & 1941 Pickup

Support for large fender brace

VI40-16067-B 1933-34



BUMPER BRACES

These braces are bent to shape from thick steel. No light-weights here. Our braces are built to take a beating. The mounting holes are punched in just the right places so you can bolt it all together. We offer them in plain steel or gleaming stainless steel.

FRONT

1932 Car, Pickup
1933-34 Car & Pickup
1936 Car & Pickup

BDB-17754/5
BD40-17766/7-C
BD68-17766/7

REAR

1932 Car

BDB-17821/2



Rear Bumper Braces, Shortened Fits - 1935-36 Car

These braces are bent to shape from thick steel. No light-weights here. Our braces are built to take a beating. The mounting holes are punched in just the right places so you can bolt it all together. We offer them in plain steel. 2 pieces.

BD68-17787-SR



Fender Welt - Vinyl

Top quality black crushed grain vinyl. 1-1/2" wide with a 3/16" bead.

VIB-16070-A 25ft 3/16" bead Vinyl
VIB-16070-B 300ft 3/16" bead Vinyl



EMS Manufacture a large range of stamped steel patch panels to suit: 1935 to 1958 Ford vehicles, 1948 - 1952 Ford Pickups, 1961 - 1966 Ford Pickups and 1935 - 1954 Chevrolet vehicles.

Although Rocket only stock a small selection of panels, we have access to the complete EMS product range and can ship any panel air or sea freight upon your order. So check out the EMS website at emsautomotive.com and check out the full range of panels to bring your steel body back to life.



1935-36 Ford Tailpan

Part No. EMS3

EMS tailpan for 1935-36 ford coupe, fits all coupe, roadster bodies with rumble seat or trunk lid, rolls under to factory seam and upward to the spare tire mount.



1935-36 Recessed Firewall - Small Block

Part No. EMSB351071

Suits all 1935-36 ford body styles
Our firewalls are precision manufactured from 18 gage steel and are designed for the most common application, this is for a small block application

1935-36 Lower Front Cowl

Part No. EMS151

Suits all 1935-36 ford body styles
The lower front cowl is the area between the firewall and the front door where the fender bolts to the main body. Outer skin only, sold in pairs.



1935-36 Lower 1/4 Panel

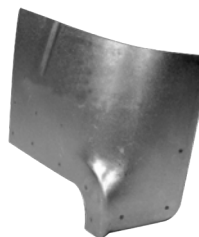
Part No. EMS152

Suits 2 Door Sedan & 3 W Coupe
Lower 1/4 panel repairs the area from the back of the door to the rear fender. Sold in pairs only

1937-40 Fender Patch

Part No. EMS40

Suits 1935-40 Ford Cars
Repairs the bottom 8 inches of the rear fender where it bolts to the running board, die stamped 18 gage steel, includes the inner reinforcement on the inside. And the wheel opening bead. Fits all body styles. Made in the usa



1935-40 Door Post Brace

Part No. EMSUN196

Suits all 1935-40 ford body styles
A reinforcement brace for the door jamb, located behind the tailpan it is the inner piece that will connect the bottom of the tailpan to the flat part of the main trunk floor. oem on 35/6 ford cabriolets, But will work on all 35-40 ford to strengthen the door jamb, sold in pairs.



1935-36 Ford Trunk Floor Extension

Part No. EMS90

Suits all 1935-36 ford body styles
Located behind the tailpan it is the inner piece that will connect the bottom of the tailpan to the flat part of the main trunk floor. Difficult to see until tailpan is removed. 18 Gage steel. Made in the usa

1935-36 Rear Floor Plan Kit

Part No. EMSB351050

Suits: Coupe

Part No: EMSB351049 Suits: Sedan Flatback/ Humpback and Sedan Delivery

The rear floor pan kit cover the area from under the front seat (about center of seat) and go back to the riser over the axle. Extends from side to side and includes the driveshaft tunnel, fabricated from 18 gage steel. Quality kit.



1935-36 Door Bottom Repair Kit

Part No. EMS117

Suits: Coupe 5W and Front Door of 4 Door Sedan
This kit will repair the lower door of a 2 door coupe. It includes the outer skin (20gage) and the inner structure (18gage). Includes hem flange, extends upward past the lower door hinge pocket.

1935-40 Rocker Panel

Part No. EMS115

Suits 1935-40 Ford Cars
The rocker panel goes from front door post to the rear door post on 2 door cars and to the center door post on 4dr cars, formed like oem style, can be used with after market street rod style floor pans from EMS or other mfg. Made in usa



HOT ROD BONNETS

ROOTLIEB
VINTAGE AUTO SHEET METAL



1928-29 & 1930-31 Model A Bonnets

Highest quality 1928-29 & 1930-31 bonnets. The stock bonnet is exactly as the original using the same gauge steel, correct sizes and louver placement. Bonnets are complete with handles, centre hinge and moulding. Various Styles of Hot Rod bonnets are available with 32 centre hinge which gives a flat attractive appearance. For a full listing and availability on Model A bonnets please call Rocket Hot Rods on 02 8825 1944

1928-29 3 Piece Bonnets

RL428 1928-29 Plain Top - Plain Sides
RL428B 1928-29 w/ 1932 Grille Shell Plain Top - Plain Sides

1928-29 4 Piece Bonnets

RL402 1928-29 4Pce Bonnet Plain Tops, Original Sides

1928-29 1 Piece Bonnet

RL431 1928-29 1Pce Bonnet top only, 4 Row Louvers

1930-31 Bonnet

RL451A 1930-31 Plain Top with 32 Centre Hinge
RL478 1930-31 3Pce Bonnet Plain Top 4 Row Louvers

1932 1 Piece Bonnet

RL551 Plain Bonnet Top Only

1932 Ford Bonnets

The stock bonnets are exactly as the original using the same gauge metal. Both 20 & 25 louver bonnets are available. All bonnets are pre-fit to a cowl and radiator shell to assure the correct contour. Hot Rod styles with various louver patterns are available in the the same high quality. Pressed steel handles and clips with rubber bumpers attached. Polished stainless steel centre hinge moulding included

1932 4 Piece Bonnets



RL500 1932 Plain Tops - 20 Louver Sides
RL501 1932 Pair Plain Tops ONLY
RL502 1932 Pair 20 Louver Sides - ONLY
RL504 1932 Plain Tops - 25 Louver Sides
RL505 1932 Pair 25 Louver Sides - ONLY



RL530 1932 Plain Tops - Plain Sides
RL527 1932 Pair Plain Sides ONLY
RL506 1932 Plain Tops - 3 Row Sides
RL507 1932 Pair 3 Row Sides - ONLY
RL508 1932 Plain Tops - 4 Row Sides
RL509 1932 Pair 4 Row Sides - ONLY

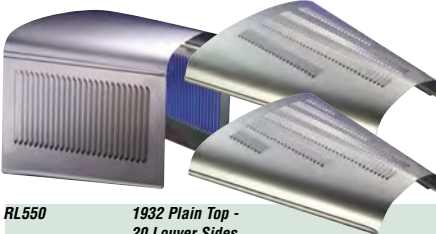


RL510 1932 2 Row Tops - 3 Row Sides
RL511 1932 2 Row Tops - ONLY
RL512 1932 2 Row Tops - 4 Row Sides
RL526 1932 2 Row Tops - Plain Sides
RL514 1932 3 Row Tops - 3 Row Sides
RL515 1932 Pair 3 Row Tops ONLY
RL516 1932 3 Row Tops - 4 Row Sides
RL528 1932 3 Row Tops - Plain Sides
RL522 1932 3 Row Tops - 20 louver Sides
RL524 1932 3 Row Tops - 25 louver Sides
RL518 1932 2 Row Tops - 20 louver Sides
RL520 1932 2 Row Tops - 25 louver Sides
RL532 1932 Plain Tops - 4 Door Sides
RL534 1932 4 Door Sides Only
RL536 1932 Plain Tops - 1 Scoop Sides
RL537 1932 1 Scoop Sides Only
RL538 1932 Plain Tops - 2 Scoop Sides
RL539 1932 2 Scoop Sides Only

1932 3 Piece Bonnets



RL560 1932 Plain Top - Plain Sides
RL551 1932 Plain Top ONLY
RL560A 1932 Pair Plain Sides - ONLY
RL556 1932 Plain Top - 3 Row Sides
RL556A 1932 Pair 3 Row Sides - ONLY
RL558 1932 Plain Top - 4 Row Sides
RL558A 1932 Pair 4 Row Sides Only
RL503A 1932 25 Louver "Correct Cut" Sides Only



RL550 1932 Plain Top - 20 Louver Sides
RL550A 1932 Pair 20 Louver Sides - ONLY
RL551A 1932 Cowl Induction Top ONLY
RL554 1932 Plain Top - 25 Louver Sides
RL554A 1932 Pair 25 Louver Sides - ONLY
RL562 1932 4 Row Top - Plain Sides
RL562A 1932 4 Row Top Only
RL564 1932 4 Row Top - 3 Row Sides
RL566 1932 4 Row Top - 4 Row Sides
RL568 1932 4 Row Top - 20 Louver Sides
RL570 1932 4 Row Top - 25 Louver Sides
RL569 1932 6 Row Top - Plain Sides
RL569A 1932 6 Row Top Only

RL552 1932 Plain Top - 1 Scoop Sides
RL552A 1932 1 Scoop Sides Only
RL553 1932 Plain Top - 2 Scoop Sides
RL553A 1932 Pair 2 Scoop Sides Only



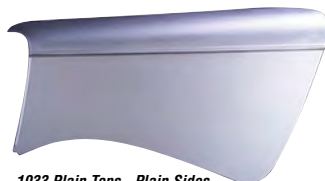
1933 Bonnets

Quality 1933 bonnets using the same gauge steel as originals. The bead work on top panel is not available at this time. Side panels with bead work are available. All bonnets are pre-fit to a cowl and radiator shell to assure the correct contour. Hinge rods & centre moldings included. No latching hardware or handles available. 1934 handles can be installed upon request.

1933 4 Piece Bonnets



RL608B 1933 Plain Tops - Stock Sides
RL608C 1933 Pair Stock sides ONLY



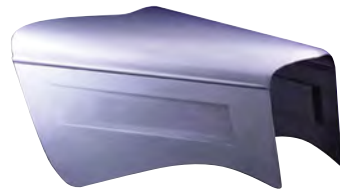
RL604 1933 Plain Tops - Plain Sides
RL604A 1933 Pair Plain Tops ONLY
RL604B 1933 Pair Plain Sides ONLY



RL605 1933 Plain Tops - 3 Row Sides
RL605B 1933 3 Row Tops ONLY
RL605A 1933 Pair 3 Row Sides ONLY



RL608 1933 Plain Tops - 34 Louver Sides
RL608A 1933 Pair 34 louver Sides ONLY

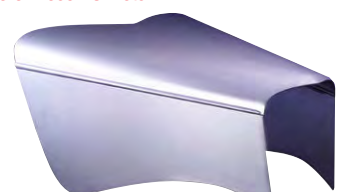


RL606 1933 Plain Tops - 1 Scoop Sides
RL606A 1933 1 Scoop Sides ONLY



RL607 1933 Plain Tops - 2 Scoop Sides
RL607A 1933 2 Scoop Sides ONLY

1933 3 Piece Bonnets



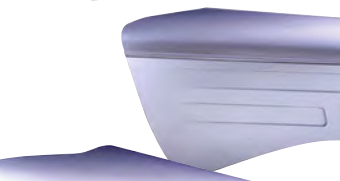
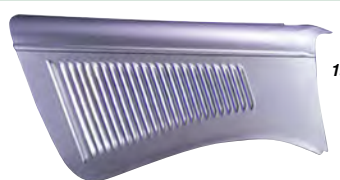
RL612 1933 Plain Top - Plain Sides - NO Cutout
RL612B 1933 Plain Top ONLY No cutout
RL613 1933 Plain Top - Plain Sides with Cutout
RL613B 1933 Plain Top ONLY with Cutout
RL609B 1933 Pair Plain Sides ONLY



RL616 1933 Plain Top - 3 Row Sides - NO Cutout
RL616B 1933 Plain Top - 3 Row Sides With Cutout
RL616A 1933 Pair 3 Row Sides Only
RL614 1933 Plain 6 Row Top-3 Row Sides-NO Cutout
RL614B 1933 6 Row Top ONLY NO Cutout
RL615 1933 6 Row Top- 3 Row Sides with Cutout
RL615B 1933 6 Row Top ONLY - with Cutout
RL618 1933 6 Row Top - Plain Sides - NO Cutout
RL619 1933 6 Row Top - Plain Sides - with Cutout



RL617D 1933 Plain Top-'33 Louver Sides - with Cutout
RL617E 1933 Plain Top-'33 Louvered Sides NO Cutout
RL617C 1933 Pair '33 louver Sides Only
RL617 1933 Plain Top-'34 Louver Sides - with Cutout
RL617B 1933 Plain Top-'34 Louvered Sides NO Cutout
RL617A 1933 Pair '34 louver Sides Only



RL610 1933 Plain Top - 1 Scoop Sides No Cutout
RL610B 1933 Plain Top - 1 Scoop Sides with Cutout
RL610A 1933 Pair 1 Scoop Sides ONLY
RL611 1933 Plain Top - 2 Scoop Sides NO Cutout
RL611B 1933 Plain Top - 2 Scoop Sides with Cutout
RL611A 1933 Pair 2 Scoop Sides ONLY

1934 Bonnets

Superior quality 1934 bonnets. The stock bonnet is exactly as the original using the same gauge steel. All bonnets are pre-fit to a cowl and radiator shell to assure the correct contour. Bonnets are complete with handles, spring assemblies and stainless steel centre hinge moulding. 34 louvers are on a slant following the hood contours.

1934 4 Piece Bonnets



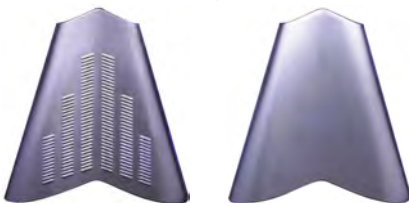
RL620	1934 Plain Tops - Stock Sides - with Cutout
RL621	1934 Plain Tops ONLY with Cutout
RL622	1934 Stock Sides ONLY
RL623	1934 Plain Tops - Stock Sides - NO cutout



RL630	1934 Plain Tops - Plain Sides - with Cutout
RL631	1934 Plain Sides ONLY
RL631A	1934 Plain Tops/33 Louver Sides - with Cutout
RL630A	1934 Plain Tops - Plain Sides - NO Cutout



RL624	1934 Plain Tops - 3 Row Sides - with Cutout
RL625	1934 Pair 3 Row Sides ONLY
RL632	1934 3 Row Tops - 3 Row Sides - with Cutout
RL633	1934 Pair 3 Row Tops - ONLY - with Cutout
RL636	1934 3 Row Tops - Plain Sides - with Cutouts



1934 3 Piece Bonnets

Plain Top and Plain Sides

RL644	1934 Plain Top - Plain Sides - NO Cutout
RL639A	1934 Plain Top - ONLY - NO Cutout
RL645	1934 Plain Top - Plain Sides - with Cutout
RL639	1934 Plain Top - ONLY - with Cutout
RL644A	1934 Pair Plain Sides Only

Plain Top and Louvered Sides

RL643	1934 Plain Top - 3 Row Sides - NO Cutout
RL642	1934 Plain Top - 3 Row Sides - with Cutout
RL642A	1934 Pair 3 Row Sides ONLY

Plain Top and Stock Sides

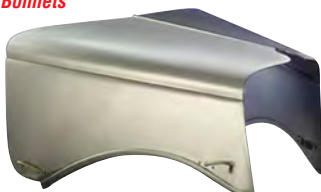
RL638	1934 Plain Top - Stock Sides - with Cutout
RL640	1934 Plain Top - Stock Sides - NO Cutout
RL639B	1934 Pair 34 Louver Sides ONLY
RL640A	1934 Plain Top - 33 Louver Sides - with Cutout
RL640D	1934 Plain Top - 33 Louver Sides - NO Cutout
RL640B	1934 Pair 33 Louver Sides ONLY

Louvered Top and Louvered Sides

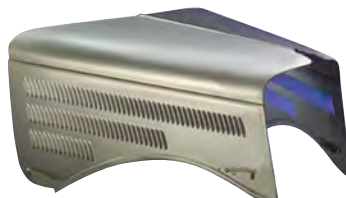
RL647	1934 6 Row Top - 3 Row Sides - NO Cutout
RL647B	1934 6 Row Top - ONLY - NO Cutout
RL646	1934 6 Row Top - 3 Row Sides - with Cutout
RL646B	1934 6 Row Top - ONLY - with Cutout
RL651	1934 6 Row Top - 3 Row Sides - NO Cutout
RL650	1934 6 Row Top - Plain Sides - with Cutout

1935 4 Piece Bonnets

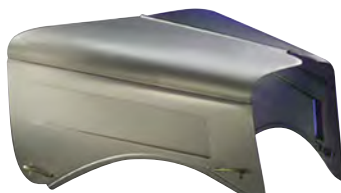
Fine quality 1935 bonnets. No stock louvers available. Hardware included as shown.



RL700	1935 Plain Tops - 1 Plain Sides
RL700A	1935 Pair Plain Tops ONLY
RL700B	1933 Pair Plain Sides ONLY

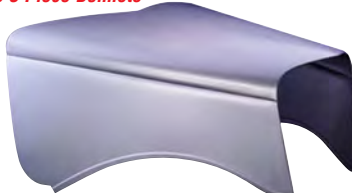


RL709	1935 3 Row Tops - 3 Row Sides
RL709A	1935 Pair 3 Row Tops ONLY
RL703	1935 Plain Tops - 3 Row Sides
RL703A	1935 Pair 3 Row Sides ONLY

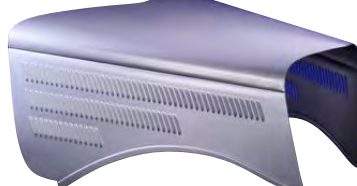


RL701	1935 Plain Tops - 1 Scoop Sides
RL701A	1935 Pair 1 Scoop Sides ONLY

1935 3 Piece Bonnets



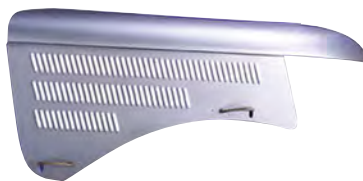
RL710	1935 Plain Top - Plain Sides
RL710A	1935 Plain Top ONLY
RL710B	1935 Pair Plain Sides ONLY



RL712	1935 Plain Top - 3 Row Sides
RL712A	1935 Pair 3 Row Sides ONLY
RL713	1935 6 Row Top - 3 Row Sides
RL713A	1935 Pair 6 Row Top ONLY
RL712	1935 Plain Top - 1 Scoop Sides
RL712A	1935 Pair 1 Scoop Sides ONLY

1936 Bonnet Sides

Top quality 1936 bonnet sides available plain or with hot rod louvered sides. No stock louvers available. Hardware included as shown.



RL740	1936 4 Piece Pair - 3 Row Sides Only
RL740A	1936 3 Piece Pair - 3 Row Sides Only



RL742	1936 4 Piece Pair - Plain Sides Only
RL742A	1936 3 Piece Pair - Plain Sides Only
RL742	1936 4 Piece Pair - 1 Scoop Sides Only
RL742A	1936 3 Piece Pair - 1 Scoop Sides Only

More Rootlieb Bonnets and Bonnet Sides are available for:

T-Model Ford

1933 - 1934 Ford pickups

1935 - 1937 Ford Pickups

1931 - 1936 Chevrolet Cars

1932 - 1936 Dodge / Plymouth Cars

For more information please call Rocket's Hot Rod department on:

02 8825 1944

or email: hotrod@rocketind.com



CHEVY 1934-1935 3 Piece Bonnets

RL9550	1934-35 Chev Plain Top - Plain Sides
RL9560	1934-35 Chev Plain Top - 3 Row Sides

BONNET ACCESSORIES



ROOTLIEB Brace Kits

A Great Complement to our hood hinge and latch kits. These 3/8" diameter, solid steel hood braces (two per kit), will improve your hood support and alignment for a smooth and safe operation. Braces come complete with flush head stud mounting kit and detailed instructions. We have the largest selection in sizes and models for cars and trucks.

RLHB2930C	29 to 30 Chevy
RLHB32C	31 to 32 Chevy
RLHB35	34 to 35 Chevy and Master
RLHB36C	36 Chevy
RLHB2627	26 to 27 Ford
RLHB29	28 to 29 Ford
RLHB2932	29 Ford w/32 Shell
RLHB3031	30 to 31 Ford (and w/32 Shell)
RLHB32	32 Ford and 33 Chevy Mercury
RLHB3334	33 to 34 Ford and 33 Chevy Master
RLHB3334T	33 to 34 Ford Truck
RLHB35	35-36 Ford
RLHB3536T	35 to 37 Ford Truck
RLHB33PD	33 to 34 Plymouth / Dodge
RLHB35PD	35 Plymouth-36 Dodge
RLHB36P	36 Plymouth
RLHB35D	35 Dodge



Hood Prop Kit

This hood drop kit eliminates resting your hood on the cowl and also is a kit to prevent from cracking expensive paint. All mounting hardware included.

UPA6223	1928-Up Black
UPA6248	1928-Up Stainless Steel



Adjustable-Level Self-Locking Hood and Trunk Prop

Constructed of high quality billet aluminium and stainless steel. When the hood or trunk is raised, the Hood and Trunk Prop will automatically lock itself into position. This eliminates the need for two hands when opening your hood or trunk. A quick release allows the hood to be opened to its max for easy engine access. We offer two versions of the Hood and Trunk Prop, three and six level. This will allow the hood or trunk to be set at various levels without any unsightly objects holding it up. Each level of the six-level prop increases the opening of the hood or trunk by approximately 6 inches. Each level of the three-level prop increases the opening of the hood or trunk by approximately 12 inches.

Part No.	Description
LK-0401014	Universal 3 level Hood and Trunk Prop Polished
LK-0401024	Universal 6 level Hood and Trunk Prop Polished



Hood Hinge Retainer Brackets

Chrome Hood Hinge retainer brackets include hardware.

VIB-8220	1932-35 Front & 1933-36 Rear
VIB-8221	1932 Rear
VI68-8226	1936 Front
VI46-8220-A	1935-37 Front & Rear

Bonnet Latches

1932 polished Stainless steel or Black
VIB-16750-SS 1932 pass 7 1932-34 pickup
 Stainless Steel
VIB-16750-BK 1932 pass 7 1932-34 pickup
 Gloss Black
VIB-16750-SK 1932 hood latch screw kit
 Stainless steel, for 4 latches

**1928-29 Hood Shelves**

1928-29 Hood Shelves **BRA188AHS**

1930-31 Bonnet Hinge Rod Set

Rootlieb 1930-31 S/S Hinge Rod Set
RL492

Bonnet Handles

1934 Handles Option for 1933 Bonnet
RL-34HANDLES

**Stainless Steel Hood Handles**

Cast stainless steel. Polished fit
 1928 - 32 passenger car and 1928-34
 pickup. Includes polished stainless screws. Sold in pairs
VIB-16609-SS 1928-32 Passenger & 1928-34 pickup

Bonnet Handles

1934-36 Passenger,
 1935-1937 Pickup

SET OF 4 -
 Gorgeous all
 polished stainless
 steel, designed to
 fit the hood for a
 sleeker, cleaner look. Includes cotter pin.
V148-16644/5-B

**1934-37 Hood Handles**

Stainless Steel. Fits 1934-36 car and 1935-37 pickup. Great for
 street rods. Set of 4, (2 x right and 2 x left).

1934-37 Hood Handles **BD48-16445/B-5**

**1937 Hood Ornament
Handle & Base Kit**

Made just like the original: highly
 detailed die-cast finished in flawless
 chrome. Mounting hardware
 included.

1937 Hood Ornament
 Handle & Base Kit **BD78-8218-K**

**HOOD STRAP KIT**

Put a little vintage race car style on your rod with our Vintage
 hood strap kit. Kit includes the necessary hardware & six feet of
 1-1/4" leather. Stainless steel springs & lower mounts with brass
 or stainless two piece screw together rivets make it easy to install.
 Solid brass or stainless release levers make it even easier to use!
 This kit is for a stock style kit and will need the hood rods to wrap
 around.

Description
 Stainless Steel Hood Strap Kit **LWDVHSKS**
 Brass Hood Strap Kit **LWDVHSKB**

Part No.
LWDVHSKS
LWDVHSKB

SO-CAL Cowl Spears

SO-CAL Cowl Spears—long or short: Investment cast in stainless
 steel, these cowl spears add that finishing touch to any vehicle that
 has a stock centre hood hinge, for example, '32 through '36 Fords.
 Because the spears are attached with automotive-grade double-sided
 tape, they can be adapted to many vehicles. They can also be cut to fit
 across a cowl vent if the short spear is not the desired look.

S0001-62163 SoCal Spear **SHORT**
S0001-62001 SoCal Spear **LONG**

Centre Hood Strips (Hood Hinge)

Polished stainless steel with correct original inner shape for great fit.

V118-16632 1932 32" long
V140-16632 1933-36 33" long
VIU-16632 Special 48" long

**1936 Hood Moulding Set**

DAL68-16722-S

Hood moulding set,
 (stainless steel), 1936
 Passenger,
 (6 pieces with moulding clips)

1935 Hood Moulding Set

DAL48-16722-S

Hood moulding set,
 (stainless steel), 1935 Passenger,
 (8 pieces with moulding clips)

Bonnet Side Hinge Rod

**Fits: 1932-1936 Car,
 1933-1937 Pickup**

Polished stainless steel, for
 free opening hoods. -
 2 required. 39" long can be cut
 to length.
BDB-16630

Bonnet Side Panel Clips

Fits: 1932 Car, 1932-1934 Pickup

Set includes all 4 panel clips, 12 special threaded
 rivets with kep-nuts and 4 rubber bumpers.

BD18-16750-SS Stainless Steel
BD18-16750 Painted Black

Bonnet Side Centre Rest Bracket

1932 Ford Car & 1932-34 Pickup

Each pair is heavy gauge polished stainless steel.
 Can be painted for original cars. A must for
 supporting hood side panels and eliminating road
 rattles. Fits on top frame rail just under the hood
 handle area. **Rubber bumpers are sold separately in B-16761 12
 pc. Hood Bumper Kit**
BDB-16761-SS

**1936 Hood
Catch Bumpers**

Sold in pairs.

BD68-16628-K Black - Front.
BD68-16628-KS Stainless Steel - Front
BD68-16759-K Black - Rear
BD68-16759-KS Stainless Steel Rear

Hood Side Clips; Fits -

1932 Car, 1932-34 Pickup

Fastens to side of hood panel and
 acts as a catch for hood latches.
 Includes rubber bumpers and
 hardware. Set of 4.
BD18-16750

**Vintage Firewall
Support Rod Brackets**

Highly polished stainless steel.
 Includes special stainless steel
 threaded rivets for easy installation.

VIB-8140/41-S
 1928-32 passenger & 1932-34 pickup

UPI Firewall Support Rod Bracket:

No hardware included

UPA8038 1928-32 Stainless Steel Cars
 1932-34 Stainless Steel Pickup

**Bob Drake Radiator
Support Rod Firewall
Brackets**

Holds ends of the radiator braces
 in place. All Stainless Steel.
 Includes Hardware. Suits 1933-
 39 cars and 1935-39 pickups.
BD40-8140/1-SS 1933-39

Radiator Support Rod Brackets

**Hood Latch
Spring
Brackets**

Fits - 1934 Car
 Precision die-formed steel in
 exact original design with
 high-grade springs. Made to
 last a lifetime. Includes special
 stainless threaded rivets.
 Set of 4 - 2 RH & 2 LH.
BD40-16658-K

**Billet Hood Adjusters**

For use on almost any application - our hood adjusters are the
 best looking piece on the market. Available in natural finish or grey
 anodized. You will need 0.875" clearance for the short adjusters or
 1.25" clearance for the tall adjusters to work.

Description

Billet Bonnet Adjusters
 0.875", Silver - Sold in Pairs
 Billet Bonnet Adjusters
 1.250", Silver - Sold in Pairs

Part No.

RING99000-5700N

RING99000-5750N

**BILLET BONNET ADJUSTER**

Aeroflow billet Bonnet adjusters are perfect to dress up your engine
 bay! Machined from 6061-T6 aluminium and featured a hardened
 rubber insert, allows adjustment down to 21mm / 13/16" height.
 5/16" UNC thread
 Available in polished or shiny black anodised finish.

Part No

AF64-4101
AF64-4101BLK
AF64-410S

Colour

Polished
 Black
 Silver

Description

21mm / 13/16" height
 21mm / 13/16" height
 21mm / 13/16" height

BONNET PINS & VENTS**Super Security
Hood Lock Kit**

This super security hood lock kit utilizes a cylindrical key
 lock mechanism which is virtually pick-proof. The kit includes two
 chrome plated lock sets, two fully threaded lock pins with four
 nuts and two keys. This kit must be used in conjunction with the
 factoryhood latch assembly; it is not for use as the only hood
 retention mechanism.

MG1472

Super Security Lock Kit

**Quick Release Hood Pin Set**

A quick, self-contained hood clamping device with no pins or
 lanyards to lose or cause hood damage. Features 3/8" diameter
 aluminium pins and easy bolt-on installation. May be used for
 many other applications where quick access to a trouble spot is
 absolutely essential. Two per set, we recommend 6 to 8 to a hood.

Quick Release Hood Pin Set

MO39010



Hood And Deck Pinning Kits

Secure hoods with a competition look. Kit permits quick removal of hood or deck. Two chromed safety pins, scuff plates and necessary hardware are included in each kit. Overall pin length is approximately 4" with 2 1/2" of threads.

With Screw-On Scuff Plates

MG1016 7/16"-20 thread-safety pins.
MG1018 1/2"-20 thread-torsion clips (NASCAR style)



1965-1970 Mustang Hood Pin Kits

These unique hood pins are yet another awesome modification you can use to set your car apart. Ring Brothers Hood Pin Kits are available for 1965-1970 Mustangs. Kits include all hardware and installation instructions and are available with silver or black hood plates. Custom installation bases are available. (Can be used for many other models.)

Description

Round Hood Pin Kit - Silver Hood Plate **RING50650-5511N**
Round Hood Pin Kit - Black Hood Plate **RING50650-5511B**

Part No.



UNIVERSAL ROUND BILLET HOOD PIN KIT

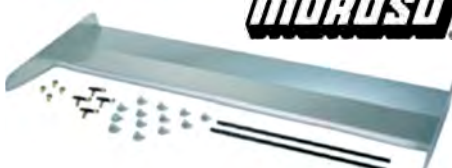
Pin your hood in secure style with the Ring Brothers Round Billet Hood Pin Kit! These high-quality, machined billet aluminium hood pins feature stainless steel locking pins that adjust to the hood angle for a superior fit and secure closure. The hood pin bases bolt into the core support with minor modification. Installation hardware and instructions are included. All hood pin kits are available in natural finish and black anodized. Sold as a pair.

- Machined from 6061-T6 billet aluminium
- Base screws into hood bump location with minor modification
- Stainless steel locking pin for secure closure
- Locking pin adjusts to the angle of the hood
- Installation hardware and instructions included
- Available in two finishes

Description
Black Anodised
Natural

Part No.
RING99000-5501B
RING99000-5501N

WINGS, LATCHES & DOORS



Universal Rear Spoiler Kit

Moroso's universal rear spoiler kit provides down force to the rear wheels for improved high speed stability. It can be trimmed to fit most applications and comes complete with support struts, mounting brackets, hardware and detailed instructions. Untrimmed dimensions: 57" length, 12" width and 24" struts.

MO78740

Universal Rear Spoiler Kit



One Piece Rear Wing

Measuring 10" deep x 40" wide, this wing features 1/4" thick mount tabs with 3/8" diameter front and 5/16" diameter rear holes with a 3-1/2" spacing. Includes swept teardrop style tip plates.

One Piece Rear Wing
40" Wide

PWC42-118-B-10

Floor Access Door

Easy to install door for access to under floor master cylinder. Quality stainless steel construction. Hinged on one side with a cam latch on the other side. Great for Model-A or any car with a master cylinder under the floor. Outside of door frame measures 5" x 8".

Stainless Steel Floor Access Door **CHEAS-6028**



Escape Hatch Latch

Positive locking and easily released, these latches are constructed of stainless steel for corrosion resistance and feature a long hook for ease of opening.

Escape Hatch Latch - Long Hook

PWC73-484



HINGES & LATCHES



Billet Show Quality Hood Hinges

Billet Specialties' precision machined, straight razor style hood hinges not only upgrade the hardware under the hood but look good while doing it! 6061-T6 hinges with stainless mounting hardware bring the "show" while precision sealed bearings and quality gas springs provide smooth operation.

Features:

- Follows OE Firewall Contours
- Hood Closes Flush With Cowl
- Stainless Hardware
- Sealed Precision Bearings

55-56 Chevy Hood Hinges

BS873510 Polished
BSBLK873510 Black Anodised

67-69 Camaro/Firbird Hood Hinges

BS873610 Polished
BSBLK873610 Black Anodised



Gas Springs

Gas springs for Billet Specialties hood hinges only. Sold in pairs.

BS3610SS Polished Steel Hood 58-69 lbs.
BS3610HDSS Polished Steel Hood OVER 58-69 lbs.
BS3610BS Black Steel Hood 58-69 lbs.

Bonnet Hinge & Accessories

Replacement Gas Strut Suit Ring Brothers Hinges

Description	Part No.
#150 Replacement Gas Strut PAIR	RING99000-150
#225 Replacement Gas Strut PAIR	RING99000-225
#260 Replacement Gas Strut PAIR	RING99000-260
#325 Replacement Gas Strut PAIR	RING99000-325

Hinge Shims

Description
HQ-WB Bonnet Hinge Shims

Part No.
RINGHOLDEN-SHIM



Fender Brace - 67-69 CAMARO

Features:

- Precision CNC machined brace
- Highest quality 6061-T6 aluminium
- Stainless installation hardware
- Straight Razor styling matches hood & deck lid hinges

BS872610 Polished
BSBLK872610 Black Anodised

Ringbrothers

...mastering the art of speed



Billet Show Quality Hood Hinges

Ring Brothers show quality billet aluminium hood hinges are available in easy to polish plain aluminium or black anodized finish and can be plated by a plating specialist. Available for steel or fibreglass hoods they are shipped in pairs, complete with all parts and instructions necessary for quick installation.

1967-1969 Camaro/Firebird

Description	Part No.
Billet Hinges for Steel Hoods	RING20679-1031NS
Billet Hinges for Glass Hoods	RING20679-1031NF
Black Hinges for Steel Hoods	RING20679-1031BS
Black Hinges for Glass Hoods	RING20679-1031BF

1970-1981 Camaro/Firebird

Description	Part No.
Billet Hinges for Steel Hoods	RING20701-1101NS
Billet Hinges for Glass Hoods	RING20701-1101NF
Black Hinges for Steel Hoods	RING20701-1101BS
Black Hinges for Glass Hoods	RING20701-1101BF

1965-1966 Ford Mustang

Description	Part No.
Billet Hinges for Steel Hoods	RING50656-1011NS
Billet Hinges for Glass Hoods	RING50656-1011NF
Black Hinges for Steel Hoods	RING50656-1011BS
Black Hinges for Glass Hoods	RING50656-1011BF

1967-1968 Ford Mustang

Description	Part No.
Billet Hinges for Steel Hoods	RING50678-1021NS
Billet Hinges for Glass Hoods	RING50678-1021NF
Black Hinges for Steel Hoods	RING50678-1021BS
Black Hinges for Glass Hoods	RING50678-1021BF

1969-1970 Ford Mustang

Description	Part No.
Billet Hinges for Steel Hoods	RING50690-1021NF
Billet Hinges for Glass Hoods	RING50690-1021NF
Black Hinges for Steel Hoods	RING50690-1021BS
Black Hinges for Glass Hoods	RING50690-1021BF

1955-1956 Chevrolet

Description	Part No.
Billet Hinges for Steel Hoods	RING29556-1081NS
Billet Hinges for Glass Hoods	RING29556-1081NF
Black Hinges for Steel Hoods	RING29556-1081BS
Black Hinges for Glass Hoods	RING29556-1081BF

1957 Chevrolet

Description	Part No.
Billet Hinges for Steel Hoods	RING29577-1091NS
Billet Hinges for Glass Hoods	RING29577-1091NF
Black Hinges for Steel Hoods	RING29577-1091BS
Black Hinges for Glass Hoods	RING29577-1091BF

1966-1970 Mopar B-Body

Description	Part No.
Billet Hinges for Steel Hoods	RING40660-1071NS
Billet Hinges for Glass Hoods	RING40660-1071NF
Black Hinges for Steel Hoods	RING40660-1071BS
Black Hinges for Glass Hoods	RING40660-1071BF

1971-1984 Holden HQ-WB

Description	Part No.
Billet Hinges for Steel Hoods	RING10681-1061NS
Billet Hinges for Glass Hoods	RING10681-1061NF
Black Hinges for Steel Hoods	RING10681-1061BS
Black Hinges for Glass Hoods	RING10681-1061BF

1974-1980 Holden Torana LH-UC

Description	Part No.
Billet Hinges for Steel Hoods	RING10681-1061NS
Billet Hinges for Glass Hoods	RING10681-1061NF
Black Hinges for Steel Hoods	RING10681-1061BS
Black Hinges for Glass Hoods	RING10681-1061BF

1967-1971 Ford Falcon XR-XY

Description	Part No.
Billet Hinges for Steel Hoods	RING51671-1121NS
Billet Hinges for Glass Hoods	RING51671-1121NF
Black Hinges for Steel Hoods	RING51671-1121BS
Black Hinges for Glass Hoods	RING51671-1121BF

**1965-1966 FORD MUSTANG****Export Brace**

- Machined from 6061-T6 billet aluminium
- Direct fitment
- No modifications necessary
- Replaces stamp steel shock mounts
- Works with stock suspension and most aftermarket suspensions
- Installation hardware and instructions included

Description 1965-1966 Mustang Export Brace
Part No. RING50656-3500N



AF64-4102BLK



AF64-4108



AF64-4105BLK

AF64-4109

BILLET BONNET HINGES

Aeroflow Billet bonnet hinges are machined from 6061-T6 aluminium. No modifications are necessary they simply bolt in place of your OE steel hinges. Aeroflow billet hinges include quality ball bearing joints and mounting bolts. Available in polished or shiny black anodised finish.

Part No	Colour	Description
AF64-4122	Polished	HQ to WB, LH to UC Holden
AF64-4122BLK	Black	HQ to WB, LH to UC Holden
AF64-4122S	Silver	HQ to WB, LH to UC Holden

AF64-4108	Polished	LC-LJ Torana
AF64-4108S	Silver	LC-LJ Torana
AF64-4108BLK	Black	LC-LJ Torana

AF64-4109	Polished	HK, HT & HG Holden
AF64-4109S	Silver	HK, HT & HG Holden
AF64-4109BLK	Black	HK, HT & HG Holden

AF64-4105	Polished	XR to XY Ford Falcon*
AF64-4105S	Silver	XR to XY Ford Falcon*
AF64-4105BLK	Black	XR to XY Ford Falcon*

* Note: Falcon hinges are designed to work with Girling brake booster. Will not fit with PBR booster.

**67-69 CAMARO Trunk Hinge**

No detail goes unnoticed when it comes to custom cars. So why settle for stock deck lid hinges when you can stand out from the rest with precision machined, 6061-T6 aluminium hinges from Billet Specialties. Hinges include stainless mounting hardware and feature quality gas springs (included) for solid mounting and smooth movement. A precision machined billet cover is included to hide hinge to deck lid mounting hardware for cleanest install available. *Black gas springs are included with deck lid hinges

BS875610	Polished
BSBLK875610	Black Anodised

Door Lock Cylinder & Keys;**Fits - 1935-41**

Flipper with indented circle & raised notch.
Each comes with 2 keys.
BD48-702302

**Deck Lid Striker**

Deck Lid Striker; Fits - 1932 5/W, Sport Coupe, Roadster
BDB-41615

**Trunk Lid Support Arms; Fits - 1939-40 COUPE, 1940 CONVERTIBLE**

Engineered with extensive testing to assure a long life of dependable function even under extreme use. Improved design. RH & LH. Pair.
BD91A-7744200/1

**Deck & Rumble Lid Latch**

Deck & Rumble Lid Latch; fits - 1935-36
BD48-52502

**Trunk And Rumble Lid Latch; Fits - 1930-34**

Higher Quality Trunk latch- Fits in trunk lid- For all 1928-1929 coupes, roadsters, and cabriolets with trunk and rumble seat, and all 1930-1931 coupes and roadsters with trunk
BDA-41604-B

**Trunk Lid Support Arms, Stainless Steel**

These beautiful arms are strong and function perfectly while adding a super nice looking touch to the trunk area. They're made entirely of 304 stainless steel, polished to a brilliant shine and come with stainless steel slide-catch hardware for a lifetime of trouble-free use. Includes Pivot Hardware.

BDB-41530-S	1932
BD40-714030-S	1933-34
BD48-714030-S	1935-36

**1928-1932 Trunk & Rumble Hinge Kits**

Trunk and Rumble lid hinge kits for 1928-32 Coupe & Roadster. Sold as complete kits including hinges, brackets and fasteners.

Description	Part No.
1928-31 Coupe & Roadster Trunk Hinge Kit	BRA-1059-ABTH
1928-31 Coupe & Roadster Rumble Hinge Kit	BRA-1059-ABRH
1932 Roadster Trunk Hinge Kit	BRB-1059-TH
1932 Roadster Rumble Hinge Kit	BRB-1059-H
1932 3 Window Trunk Hinge Kit	BRB-2059-TH

**Door Latches Open Car**

Sold in pairs

VIA-35655/56-AR

1928 roadster & phaeton with chrome arm

**VIA-35655/56-B**

1929/31 roadster & phaeton

**1928-32 Door Hinges**

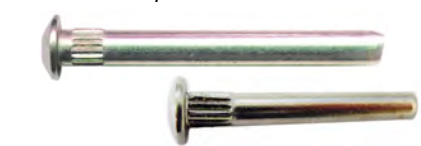
Door hinges for Roadster, Pickup & Phaeton are sold as complete sets of 2 Pairs. Hinges for 3 window coupe are complete sets of 3 pairs.

Description	Part No.
1928-29 Roadster, Pickup & Phaeton Front Hinges	BRA-35600-A
1930-31 Roadster, Pickup & Phaeton Front Hinges	BRA-35600-B
1932 Roadster Door Hinges	BRB-35600
1932 3 Window Door Hinges (3 Pairs)	BRB-25600

Hinge Pin Puller

This very handy tool is made of forged steel with a heat treated bolt. Remove pins without damage to hinge or paint. Stainless steel extensions included.

BDTL-100 Hinge Puller
BDTL-100-P Replacement Pins

**Stainless Steel Door Hinge Pins**

High Quality stainless steel hinge pins for 1928-48 Ford. Polished tops, identical to the originals

UPA6211	0.275" dia x 1-1/2" long	1932-48 Ford
UPA6237	0.25" dia x 1-13/16" long	1928-31 Ford
BD48-702475-0S	Oversize hinge pins	

**Door Check Strap Kits**

Leather strap kit includes polished stainless steel retainer plates and stainless steel screws.

VIA-702828-S 1928-32 Open Car
VIB-702828-S 1932-48 Metal Arm Type with Rubber Cushions

**BILLET DOOR STRIKERS****Camaro Door Striker**

Description 1967-81 Camaro Door Strikers

Part No. RING92000-2191N

MUSTANG Door Strikers

Description 1965-66 Mustang Door Strikers
1967-70 Mustang Door Strikers

Part No. RING50656-2150
RING50670-2160

**Dual Rotor Bear Claw Door Latches**

Double rotor door latch with both right or left side pulling mechanism for driver and passenger doors. Door pins included.**Sold in pairs.

DAKBCL-2 Left and Right Dual Rotor Bear Claw Door Latches.

**Dakota Digital****Female Door Dovetails**

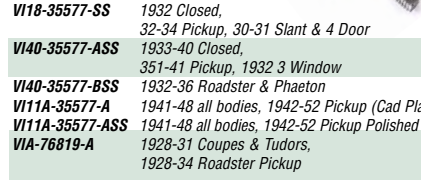
Includes stainless steel mounting screws.

VII18-35576-BS	1932-36 Roadster & Phaeton, Gloss Black
VII18-35576-SS	1932-36 Roadster & Phaeton, Stainless Steel
VIB-35576-BS	1932-34 Closed Car & Pick Up, Gloss Black
VIB-35576-SS	1932-34 Closed Car & Pick Up, Stainless Steel

**Male Door Dovetails**

Includes stainless steel mounting screws.

VII18-35577-SS	1932 Closed, 32-34 Pickup, 30-31 Slant & 4 Door
VI40-35577-ASS	1933-40 Closed, 351-41 Pickup, 1932 3 Window
VI40-35577-BSS	1932-36 Roadster & Phaeton
VI11A-35577-A	1941-48 all bodies, 1942-52 Pickup (Cad Plated)
VI11A-35577-ASS	1941-48 all bodies, 1942-52 Pickup Polished S/S
VIA-76819-A	1928-31 Coupes & Tudors, 1928-34 Roadster Pickup



Striker Plates

Excellent Quality.
B-40-, 81- include
stainless steel screws
01A-, 011A are
spring loaded like
originals.



Black Oxide finish Strikers

VIB-702340 1932 3 Window & Sedan Del
VI40-702340 1932-34 Closed, Pickup & 1937 Panel Truck
VI81A-702340 1935-39 Passenger & 1935-52 Pickup

Polished Stainless Steel Strikers

VI40-702340-SS 1932-34 Closed, Pickup & 1937 Panel Truck
VI81A-702340-SS 1935-39 Passenger & 1935-52 Pickup

Door Check Bumpers

Door Check Bumpers; Fits - 1932-48
Rubber stops for your metal check arm. Pair.
BDB-46582



Bear Claw Latches

You've wanted them... and StreetWorks has them. Medium size, single rotor, "trip" latches and strikers meet all Federal Vehicle Safety Standards and are rated for 750 pounds of holding force - AND THEY'RE LOCKABLE! All of the features of our L24 latches plus the added feature of lockability. Push the lock lever down and the latch is locked, up and it's unlocked. Works with lock actuators and or with interior door lock "buttons" found on many cars. Bring your ride into the 21st Century with the best replacement latch available. Sold In Pairs Only.

Description

Locking Latches & Striker Bolts - PAIR.

Part No.
WSWL24LK

Bear Claw Mounting Plate

Make your installation job a breeze with these heavy gauge steel, weld-in plates for the above single rotor Gator-Jaw style latches. Get them by themselves or with the latches and striker bolts. S/S installation screws included with the plates. Sold in pairs only.



Description

Bear Claw Mounting Plate With Screws.

Part No.
WSWL24M

Power Cowl Vent Kit

Give your cowl vent a lift with this powerful gear motor kit that comes complete with gear motor, brackets, hardware, interior switch, wire, connectors, and instructions. Steel bracket for cowl can be bolted or welded.



Attractive 5" aluminium rod arm gives a clean look. Motor with mounting bracket and lever arm measure 2-1/2" wide, 4" high and 3-1/4" deep including motor, not including 5" connecting arm. Also works for power glove box door. motor is not waterproof.

Description

Adjustable - Power Cowl Vent Kit.

Part No.
WSWL34

Chrome Steel Hood Latch

Fits Camaro 1967 up to 81
RPCR9473



Ringbrothers
...mastering the art of speed

CAMARO Door Strikers

Want a subtle update for your car? Check out our Camaro door strikers. The plate is crafted from billet aluminium and anodized grey. The post is stainless steel for durability.

1967-81 Camaro Door Strikers

RING69-81GMDS

MUSTANG Door Strikers

Finally there is an alternative to the original door latch striker. Crafted from stainless steel for strength and beauty. These strikers are a direct replacement for the stock striker. All hardware is included.

Description

1965-66 Mustang Door Strikers
1967-70 Mustang Door Strikers

Part No.

RING65-66MDS
RING67-70MDS

GRILLE SHELLS, INSERTS & MOULDINGS

EARLY FORD

Vintage Early Model A 1928 -29 Radiator Shell

High quality stamped steel radiator shells

VIA-8200-SC

1928-29 smooth chrome plated

VIA-8200-S

1928-29 smooth Unplated

UPI Early Model A

1928 -29 Radiator shell

High quality stamped chrome plated steel radiator shells

UPA-3009 1928-29 no wire holes



Model A Stone Guards

All Polished 304 Stainless Steel Frame
& Mesh. Polished Stainless Steel Hardware Kit

VIA-18700-A 1928-29

VIA-18700-B 1930

VIA-18700-C 1931

Stainless Steel Radiator Support Rods

Highly polished stainless steel rods, includes nuts & washers.

UPA6201 1928-31 Model 'A', 26" long

UPA6203 1932-39 32.5" long

Support Rod Thread Cover Set

Fits all support rods, set of 4, 2 long ones cover thread at the end of rods and 2 short ones cover the thread of the head of rods. Sold as set.

UPA6231 1928-39 Thread Cover Set



1928-32 Radiator

Support Rod Brackets

1928-32 Radiator Support Rod Brackets, Stainless, Hardware.

VI40-8140/41-S



1932 FORD

DALB-8151-A

Grille Bars, (Plain Steel), 1932 Passenger, sold as each.

DALB-8151-SS

Grille Bars, (Stainless), 1932 Passenger, sold as each.



Vintage 1932 Grille Inserts

All polished stainless steel with mounting hardware.

VIB-8200-SR

Street Rod Style
NO Crank Hole

VIB-8200-OS

With Crank Hole

DALB-8200-ID

Street Rod Grille Insert, (Stock Height)
100% Polished Stainless Steel Bars,
Frame, Bars & Trim, NO Crank Hole, 1932 Passenger.



1932 Stainless Steel Grille Insert

Without Crank Hole **RPCR1132**
With Crank Hole **RPCR1133**

UPC 1932 Stainless Steel Grille Insert

Without Crank Hole **UPB20341**
With Crank Hole **UPB20340**

1932 Grille Trim Ring

Fits at the back of the Grill Shell on 1932 Passenger Cars.

DAL18-8234



Vintage 1932 Radiator Shell Grille Trim

VI18-8234

1932 S/S

1932 Steel Radiator Shell - Hot Rod

Die stamped steel. Available filled hot rod style with no opening for radiator cap, or with holes for radiator cap and crank.

VIB-8200-HRS

1932 Hot Rod (NO holes) Grille Shell

VIB-8200-OGS

1932 (with holes) Grille Shell

1932 Ford Steel Grille Shell

Without Crank Hole

RPCR1131

With Crank Hole

RPCR1134

RPC Stainless 32 Ford Grille

Stainless steel 32 ford radiator grille without crank hole.

RPCR1132

Grille Shells, Inserts & Mouldings

1928-29 Ford radiator shell.

UPA3009 Smooth Chrome

Plated - NO Wire Holes.



1932 Grille Shell

1932 Grille Shell, Filled Top,

Steel **BRB-1620**

1933 FORD

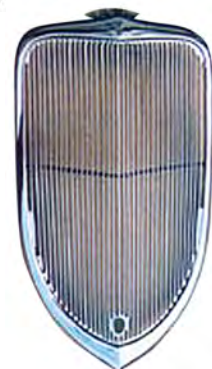
Crank Hole Cover; Fits - 1933 Car

A nice finishing touch. Easily removed if you still have to crank it. Die cast chrome plated.

BD40-8216-A



1934 FORD



1934 Chrome Grille

This grille is truly a quality piece. Our dies are made to exact specifications to create a grille that needs no body work.

BD40-8200



1933-34 Grille Panel

This pan bolts in behind the grille bottom to aid in cooling by directing air flow to the radiator.

BD40-8240-S

1933-34 Grille Panel

1934 Grille Border Trim

Made of polished stainless steel and fits around the inside of the grille shell. Includes coupler clips and our special designed "T" bolts.

1934 Grille Border Trim **BD40-8234**

Front Fender Tie Brackets

Die cast. these clamps the front fenders together under the front grille. All hardware included.

VI40-16088-B

1933-34 Painted Black

VI40-16088-C

1933-34 Chrome Plated



1934 Grille Trim Ring Clip

DAL40-8234-CL

Grille trim ring clip, (stainless holds trim ring together at bottom), 1934 Passenger.

1936 FORD

1936 Outer

Grille Trim

BD68-8184/5

Outer grille trim mouldings, (polished stainless steel)

1936 Passenger, sold

as pair.



1936-37 Grille Trim Clips

Made from high quality spring steel.
1936-37 Grille Centre Trim Clips (6)
 BD68-20001
1936 Grille Outer Trim Clips (16)
 BD68-20002

**1936-37 Grille Trim Clips**

Retaining clip kits for 1936-37 Grille trims.
BD68-20001 1936-37 Grille Centre Trim Clips (6 Pack)
BD68-20002 1936 Grille Outer Trim Clips (18 Pack)

**Grille Centre Strip; Fits - 1936**

Grille Centre Strip is a superb reproduction. Die stamped stainless steel, featuring 3 piece construction. Buffed to an eye-catching luster. Stainless Steel - 3 piece construction. Includes clips. It's easier to replace this stainless trim than to repair and polish dinged-up originals. Polished centre consists of upper, lower and crank hole as original.
 BD68-8157N

**1936 Radiator Pan**

Quality die stamped metal. Helps cooling by directing air into radiator.
 BD68-16554 1936 Radiator Pan

1939 FORD**1939 Deluxe Grille Trims**

Brand new. Precision roll formed of high quality stainless steel. 24 piece kit comes with mounting hardware. Includes mounting clips. Available with centre strip in kit or separate.

BD91A-8332-K Grille Trim Kit 24 Piece (No Centre Strip)
BD91A-8332-KC Grille Trim Kit 25 Piece (Includes Centre Strip)
BD91A-8168-B Grille Centre Trim

**Radiator Shell & Hood Ornaments**

Die cast & chrome plated

**SO-CAL Bullnose**

The SO-CAL Bullnose is investment cast in stainless steel and polished to a high luster. Shaped to fit the Brookville filled '32 grille shell, it can also be easily formed to fit your filled shell, that's very important because not all filled shells are the same profile. Remember, die cast bullnoses cannot be formed to fit your shell.
NOTE: Emblem not included with this bullnose.
 SO001-60200 SO-Cal Bullnose

SO-CAL Bullnose Emblem

Available to fit the bullnose are two different styles of emblem: the regular Ford script emblem, available in red, blue or black and a solid silver SO-CAL emblem. The SO-CAL emblem is available in black on silver only.

V18-8212 Ford Script Blue
SO011-B-8213 Ford Script Black
SO001-62008 SO-CAL Script Silver on Black
SO011-B-8214 Ford Script Red

**Radiator Shell Emblems**

Blue Porcelain and chrome plated edge same as original.

UPA3003 1928-30 Blue Cloisonne
UPA3006 1933-34 1934 Pass & 1938 deluxe

**1938 Deluxe****Hood Side Emblems**

Die cast and chrome plated. Sold as pair
 V181A-16605/6 1938 deluxe

Chrome Die Cast Emblems

Chrome script emblems. Stud mount, clips included.

Chrome Ford Emblem

For Ford 1940, and also for 1953-56 Pickup tail light lens.
 UPA6108 1939 deluxe standard & pickup

Chrome Blown Emblem

UPS1010 Universal Application

Chrome Cruisin Emblem

UPS1011 Universal Application

Chrome Pro Street Emblem

UPS1012 Universal Application

Chrome Turbocharged Emblem

UPS1013 Universal Application

Chrome Hotrod Emblem

UPS1001 Universal Application

Chrome Streetmachine Emblem

UPS1002 Universal Application

Chrome Streetrod Emblem

UPA6202 Universal Application

Head Light Bar Emblem

Die cast chromed V8 Emblem
 V118-13122 1932 Ford

**1932 Grille & Hood Ornament Emblems**

Machined, welded stud, correct curves, bright chrome and great detail all contribute to our perfect emblem. Fits in Grille and Hood Ornaments. Beautiful duplications of the original blue and chrome cloisonné. Also available in custom colours.

BDB-8212 Fits Original Style Ornaments - Blue
BDB-8212-B Fits Original Style Ornaments - Black
BDB-8212-R Fits Original Style Ornaments - Red
BDB-8212-W Fits Original Style Ornaments - White
BDB-8212-STR-B Fits Bullnose Style Ornaments - Blue
BDB-8212-STR-B Fits Bullnose Style Ornaments - Black
BDB-8212-STR-R Fits Bullnose Style Ornaments - Red
BDB-8212-STR-W Fits Bullnose Style Ornaments - White

**1932 Bullnose Grille Shell Ornament**

A perfect custom touch for a filled shell. Emblem sold separately.
 BDB-8215-BN 1932 Bullnose Ornament

Radiator Shell Emblems

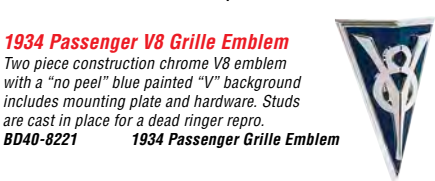
these emblems are manufactured to the high standards of the Ford motor company. Each is an official licenced product. Blue cloisonne (glass) colour is used as original. Each has proper mounting stud or clip as required.

VIA-8212-A 1928-30 Blue Cloisonne
VIA-8212-B 1931 Chrome with Blue Lettering
VIA-8212 1932 Pass & 1932-35 Pickup
V118-8212 1933 Passenger
V140-8212 1934 Pass & 1938 dlx. 90hp
V148-8212 1935-36 Pass, 1936 Pickup & 1938 Std 90hp

1933 Passenger,**1933-34 Pickup****Grille Emblem**

Ready to install V8 grille emblem has a nice chrome finish. Comes with a background painted field.

Includes mounting plate and hardware.
 BD40-8217-A 1933-34 Pickup Grille Emblem

**1934 Passenger V8 Grille Emblem**

Two piece construction chrome V8 emblem with a "no peel" blue painted "V" background includes mounting plate and hardware. Studs are cast in place for a dead ringer repro.
 BD40-8221 1934 Passenger Grille Emblem

1934 Pickup V8 Hood Side Emblem

Chrome plated with stud.
 BD46-16608

**1935-36****Greyhound Ornament**

Die cast and brilliantly finished with high lustre chrome plating.

BD48-8215-G 1935 Greyhound Ornament
BD68-8215-G 1936 Greyhound Ornament

**1936 Bullnose Grille Shell Ornament**

Chrome "Bullnose" style grille shell ornament. Emblem sold separately.
 BD68-8215-BN

1935-36 Grille Ornament Emblem

Snap in emblem. Suits stock and Bullnose style ornaments.
 BD48-8212 1935-36 Ornament Emblem

1935-36 Pickup Hood

Side Emblem
 Die stamped with blue background. Includes mounting hardware.
 BD50-16606 1935-36 Pickup Hood Side Emblem

**1936 Horn Grille Pads**

DAL68-16156-S
 Horn grille Pads, (moulded rubber with beaded edge), 1936 Passenger, sold as pair.

**1936 Horn Grille Cover**

DAL68-16156-A
 Horn grille cover, (stainless steel), 1936 Passenger

**RUBBERS & LACING****1935 Bumper Grommets**

DAL48-17772-S
 Front Bumper Arm Grommets, (Moulded Rubber), 1935 Passenger, sold as pair

1936-38 Bumper Grommets

DAL68-17772-S
 Front Bumper Arm Grommets, (Moulded Rubber), 1936-37 Passenger, & 1938 Standard, sold as pair

**1932-48 Deluxe Running Board Covers**

Made of high quality rubber. Each cover is exactly the same as the original, and have roll over lips that fit like a glove.

Adhesive and instructions included. Sold as pair.

V18-16450/1 1932
V140-16450/1 1933-34
V148-16450/1 1935-36
V178-16450/1 1937-38, 39 Standard
V191A-16450/1 1939 Deluxe, 1940
V111A-16450/1 1941
V121A-16450/1 1942-48

Radiator Shell Lacing Kits

Original style woven radiator lacing as henry used. Includes mounting hardware.

VIA-16739-AS 1928-29
VIA-16739-BS 1930-31
V18-16739-S 1932 Passenger & 1932-34 Pickup
V140-16739-S 1933-34 Passenger
V148-16739-S 1935 Passenger
V168-16739-S 1936 Passenger



Cowl Lacing Kits

VIB-16740-S	1932 Passenger & 1932-34 Pickup
V140-16740-S	1933-34 Passenger
V148-16740-S	1935 Passenger, 1935-37 Pickup
V168-16740-S	1936 Passenger



Cowl Lacing Kit

Original style woven lacing as Henry used. Includes mounting hardware.

VIA-16740-AS	1928-29
VIA-16740-BS	1930-31



Cowl & Radiator Lacing For Street Rods

Made of high tech rubber with pressure sensitive adhesive backing. 8 foot lengths.

VIHR-16739	Radiator Lacing 3/8" Wide, 3/16" Thick
VISR-16739	Radiator Lacing 3/8" X 3/16" Half Round
VIHR-16740	Cowl Lacing 5/8" Wide, 3/8" Thick
VISR-16740	Cowl Lacing 3/4" X 23/64" Half Round

Trunk & Rumble Lid Seals

Made from high quality extruded sponge rubber.

V140-713540	1932-34 Coupes, Roadsters & Cabrio.
V148-713540	1935-36 All Coupes Trunk Seal



Body to Frame Bush Set

High density rubber bush kit, 34 pieces for 1937-40 Fords. V178-5001

1937-40 Body to Frame Bush Set



VIB-16761-S

Hood Bumper kits

Precision made kits feature exact shapes and details. 1932-36 kits have moulded material inserts like originals and attaching hardware. 1937-56 kits include attaching hardware. No mix or match.

VIB-16761-SK	1932 Pass & 1932-34 Pickup (12 Piece)
V140-16761-S	1933-34 (14 Piece)
V148-16761-S	1935 Pass 7 1935/37 Pickup (16 Piece)
V168-16761-S	1936 (26 Piece)



1930-48 Windshield Rubber Seals

1941-48 Seals fit both Ford & Mercury.

VIB-701290	1932 (except 3 Window)
V140-701290	1933-34 Closed Car 1932 3 Window
V148-701290	1935-36 Closed Car & Pickup
VIA-37199-BS	1930-36 Open Car Lower Edge Seal

Door Bumpers

VIB-46440 1933-36 Pass 32-52 Pickup goes in slots in Door Jamb



Cowl Vent Gaskets

Made of molded neoprene sponge rubber.

VIB-700616	1932 Pass & 1932-34 Pickup
V140-700616	1933-34 Passenger & 1935-36 Pickup
V148-700616	1935-36 Passenger
V178-700616	1937-48 Passenger

Cowl Vent Screens

V148-700590	1935-36 Passenger
V101A-700590	1933-34 Pass & 1939-40 Passenger



Headlight Bar / Stand Pads

High quality rubber with moulded edges.

UPA9014	1928-32 Rubber bar pad flat
VIB-13130	1932 Pass & 32-34 Pickup Rubber Bar Pad
VIA-13130-AF	1928-29 Rubber Bar Pad Flat
V140-13130	1933-34 Pass, 1935-37 Pickup



1932-37 Headlight Pads

Fits between fender and headlight stand. Moulded rubber with bead, not a flat die cut style.

BDB-13130	1932 Passenger, 1932-34 Pickup
BD40-13130	1933-34 Passenger, 1935-37 Pickup
BD48-13130	1935 Passenger
BD68-13130	1936 Passenger



Shok-Liner

Great between any metal-to-metal mounting applications like fenders, running boards, braces, panels and gas tanks. This specially designed rubber extrusion can be multi layered for a wide range of custom thicknesses. 1/8" thick x 2" wide x 25' long.

BD-5010-A Shok-Liner - 25ft Roll



FORD WINDSHIELD FRAME GASKET

Model A Ford 1928-31 fits Bottom And Both Sides, Rubber **VIB-79500**



GLASS METAL CHANNEL

Model A Ford 1928-31 Fordor Sedan, R/H side door Front or Rear, to be use with single arm regulator.

VIA-45983-A



UPPER DOOR SEALS

Fits 1932 3/W, 1933-34 Coupe & Sedan **V148-7043724-AS**

Windscreen Install Kits

Kit includes rubber seal and 50 stainless steel flathead screws and lock nuts. Can be used on front or rear windows. **Windscreen Install Kit, 1/4" Thick** **MOC4901** **Windscreen Install Kit, 3/8" Thick** **MOC4902**



1932 Door Scuff Plates

Polished stainless steel door scuff plates. Sold as pairs. **Roadster & Phaeton - 23-3/4"** **BDB-138-1** **5W Coupe, Tudor & Fordor Sedans - 34-1/4"** **BDB-338-1**



1928-31 Coupe, Tudor & Pickup - Front Window Channel

Front door window channel kit for 1928-29 coupe, sport coupe, tudor and 1930-31 tudor and pickup. Each original style window channel kit includes all the window channel, sponge seal and window rubber bumpers required for both sides of your car. Hooks are riveted to channels where applicable. One window channel kit services both doors **VIA-45983-A**

Metal Glass Channel Coupes, Tudors & 30-1 Trucks 1928-31

Metal glass channel Coupes, Tudors & 30-1 Trucks 1928-31. The metal channel holding the bottom of the door glass. The regulator arm fits into the slot in the bottom. Right and left are the same. **VIA-45962-A**



1935-36 Ford 3W Coupe Door Window Channel Kit

Kits that contain "cat whiskers" that go all the way around the garnish and window opening on the door. One window channel kit services both sides of the car **V148-45983-3WB**

1935-36 5 Window Coupe & Fordor Front Door Window Channel

All 1935-36 window channel kits include pre-bent "cat whiskers" with stainless steel edge bead, lower u-shaped channels, side straps division bar inner felt channel, upper felt seal and installation clips.

V148-45983-5W/4D

Window Channel Stick Stainless

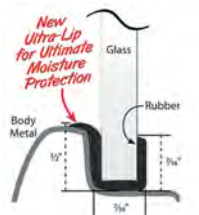
Cat whisker 96" long flexible pile lining stainless bead, one sided strip generally used on interior garnish moldings or in the window channel to alleviate window glass rattles. **V1U-45983-2**

Window Channel Stick black

Cat whisker 96" long flexible pile lining black bead, one sided strip generally used on interior garnish moldings or in the window channel to alleviate window glass rattles. **V1U-45983-3**

Ultra-Lip Window Seal; Fits - 1928-40 Qtr, 28-36 Rear Window

The Drake Team redesigned our original style B-704220 seal for ultimate protection against body rot caused by moisture seeping under the outer seal edge. Ford's original design was adequate, but it didn't keep moisture from collecting between the rubber and body surface. That's why many early Fords now have rust holes around the quarter windows which are usually invisible but cause interior water leaks. The new seal-lip not only keeps moisture out, but also gives a very nice visual accent to the window border. **BDB-704220-B**



1937-40 Ford Sedan Closed Car Windshield Seal.

latest technology combined with the highest-grade rubber, correctly molded and contoured to produce ultimate sealing qualities without rubber distortion. This means years of worry-free, wet weather driving with no water leaks. (1937-39 Closed Car & Pickup - Molded to Shape. Like the original, seal surrounds the entire windshield frame **V178-701290**



Windshield Seam Clips; Fits - 1935-36

Windshield Frame Seam Clips - Stainless Steel - Ford Cabriolet, Ford Station Wagon & Ford Convertible Sedan closed car & pickup **BD48-701244-A**

WIPER ACCESSORIES



Wiper Stem Covers - Bullet

Not running wiper arms? Cover those posts with our polished billet wiper post covers. Choose from post style or screw-on styles. Sold in pairs.

Applications:
Post-Style 11/16" or smaller shaft
Screw-on 8mm x 1.25 threaded shaft
Billet Style / Screw On **BS248210**
Ribbed Style / Screw On **BS248215**
Billet Style / Post Style **BS248810**
Ribbed Style / Post Style **BS248815**



WINDSCREEN FRAMES



Early Ford Closed Car Windshield Frames

Wide range of closed car windshield frames for 1928 through to 1936 Fords. Available in both raw steel and chrome plated windshield frames for 32 Fords. Glass and hardware are not included.

SO170-97006	32 5-Window Coupe, Sedan & Victoria Chrome
SO170-97007	32 5-Window Coupe, Sedan & Victoria Raw
SO170-97008	1933-34 Closed Car Chrome
SO170-97009	1933-34 Closed Car Raw
SO170-97010	1935-36 Closed Car Chrome
SO170-97011	1935-36 Closed Car Raw

1928-29 Open Car Windshield Frames

Description
1928-29 Round Plain
2" Chopped W/Shield
Frame **BRA-1070-A2**

1928-29 Round Chrome
2" Chopped W/Shield
Frame **BRA-1070-AC2**



1928-29 Open Car Windshield Stanchions

Description
1928-29 2" Chopped Plain W/Shield Stanchions
1928-29 2" Chopped Stainless
W/Shield Stanchions

Part No.
BRA-37138-AC
BRA-37138-ACS

Brookville 1932 3 Window Coupe Windshield Frame

Stock height plain steel windshield frame for 1932 3 window coupe.

BDB-45400-P 1932 Stock Height



32 Ford Open Car Windshield Frames

Available in both raw steel and chrome plated windshield frames for 32 Fords. Glass and hardware are not included.

SO170-97004	32 Ford Chrome
SO170-97005	32 Ford Raw

Brookville 1933-34 Windshield Frame

Stock height plain steel windshield frame for 1933-34 Roadster & Phaeton.

BD40-37105-P 1933-34 Stock Height



1932-48 Windshield rubber seals

1941-48 Seals fit both Ford & Mercury
VIB-701290 1932 (except 3 Window)
VIA-701290 1933-34 Closed Car
VIA-701290 1932 3 Window
VIA-701290 1935-36 Closed Car & Pickup

Windshield Lower Stanchions

Include pads & hardware.
Die cast chrome plated.
VIB-37132-S
1932 roadster & phaeton.



1932-34 Windshield Post Pads

Windshield post pads for 1932-34 Roadster & Phaeton.

BDB-37132 1932 Windshield Post Pads
BD40-711216/7 1933-34 Windshield Post Pads

1930-31 Open Car

Wind Wing Clamp Set

1930-31 Open Car Wind wing clamp Set. Chrome plated clamp set for the wind wing glass. Comes with glass patterns. Price is for a kit that is enough for both sides of the car.

VIA-18200-B



1930-31 Stainless Steel Deluxe

Height Open Car Windshield Stanchions
BRA-37138-BD

1930-31 Open Car Lower Windshield Stanchions

BRA-37138-BL



1932 Ford closed car windshield upper mounting brackets.

Zinc plated steel, fits all 1932 closed car except 3W coupe.

UPB20108

1932 Ford Closed Car Windshield Hinge Set

Fits 5-Window Coupe, Tudor, Fordor, (Except 3W)
Heavy Stamped Steel, Every Detail Exactly as Original

UPB-20107



Windshield Garnish Molding; Fits - 1932 Closed Car

Windshield Garnish Moulding - Stainless Steel - All Ford Except 3 Window Coupe & Cabriolet

BDB-37115-BS



3/W Windshield Bracket

Stainless Steel; Fits - 1932

1932 w/shield swing arm brkts s/s (slide arm to w/shield) Sold as pairs

BD1138

1932 Windshield Upper Stanchions

Die stamped from stainless steel. Complete with cups & liners. Left hand side has post mirror mounting hole. Stock stanchions have holes for wind wing brackets. Chopped stanchions do not have wind wing bracket holes.

UPA6241 1932 FORD Stock Height
UPA6244 1932 FORD Chopped 2"
V118-37136-SS Stock height
V118-37136-CHP Chopped 2 inches



1933-34 Windshield Stanchions

These are cast brass, smooth castings, ready to paint or plate. Stanchions do not have the side curtain fastener holes.

VIA-37136 Stock Height
VIA-37136-CHP Chopped 2 inches

Windshield Side Arms

Die Cast Chrome Plated

VIA-45463-S 1928-31 Car
& 1928-34 Pickup
1932 Passenger
VIB-45463-S

Windshield Wing Nut

Show quality, die cast, chrome plated. Both types 3/8" -24 thread

UPA6013 1923-31 Open Car
VIA-351000 1923-31 Open Car
VIB-351000 1932-36 Open Car

Windshield Frame Stud

Made with correct shoulder & tapered nut. Thread: 3/8-24 both ends.

VIB-37158 1916-32 Open Car
UPA8043 1916-32 Open Car
UPA8043C 1916-32 Open Car Chrome
UPA8043SS 1916-32 Open Car Stainless

Windshield Regulator

Windshield Regulator; fits - 1935-36 Closed Car, Wagon & Pickup
BD48-701325



1932-1933 Car

Window Regulator

Brand new window regulator for 1932-1933 passenger cars. This will not fit 1932-34 pickup trucks, and will not fit 1932 2 door sedan rear windows. If this is being installed in an original 1932 car, the regulator needs to be spaced out at the screw holes in between the regulator and the inside door panel because an original 1932 window regulator has a spacer built onto the regulator and these new regulators are the 1933 style and mount flush with the door panel.

Passenger-Side **V118-702701**
Drivers-Side **V118-702700**



Window Regulator 1928-31

The best model A window regulator on the market today! Functions like the original did, no more skips and jumps! 3 hole mounting style used in Coupes, Tudors and Pickups. Painted black finish. 1928-31 Passenger Side 1928-31 Driver Side 1928-31



VIA-48106-A
VIA-48105-A

Window Regulator

Front 1928-31 & Rear 1930-36

The 4-hole mount style used on the 4-door sedans 1928/28 RHS Front / 1930/36 LHS Rear 1928/28 LHS Front / 1930/36 RHS Rear

VI-48105-B
VI-48106-B



1933-34 Windshield Regulator

Reproduction windshield regulator for 1933-34 Ford with wind out windshield. Includes mounting screws. Knob sold separately.

VIA-701325 1933-34 Windshield Regulator
VIA-701348 1933-34 Windshield Regulator Knob - Chrome

1935-40 Car Female Dovetail Rebuild Kit

One female dovetail rebuild kit enough for one door for 1935-40 closed car and 1935-41 trucks. Kit includes 10th pieces and two new springs to improve your door alignment.

VIA-702574-RK



Windshield Frame Screw Kits

These are screws that hold the windshield frame together. These stainless screw kits are made for original frames.

VIB-37111-SK 1928-34 Closed Car & Pickup set
V118-37111-SK 1932-36 Open Car set
VIA-37111-SK 1935-39 Closed Car & Pickup set



Pivot Bolt & Nut Set

Polished Stainless Steel

VIA-45475-SS 1928-32 Closed Car
& 1928-34 Pickup 2 pair



Slide Arm Washer Set

Chrome plated with plastic insert.

VIA-45477-S 1928-32 Closed Car
& 1928-34 Pickup Set



Slide Arm Nut

Die cast & Chrome plated

UPA8008 1928-32 FORD
VIB-45482 1928-32 Closed car
& 1928-34 Pickup



Windshield Frame Cone

Die cast, chrome plated

VIA-37154-R 1916-31 Open Car
V118-37154 1932-36 Roadster & Phaeton
UPA6014SS 1915-41 Ford
UPA6017SS 1932-36 Ford



Windshield Finger Pulls

Die cast and chrome plated. Includes stainless screws. Sold in pairs.

VIB-37118-S 1928-31 Open Car
V118-37118-S 1932-36 Roadster & Phaeton

EXTERIOR DOOR HANDLES



Hood Handles

1928-32 Stainless Steel Hood Handles (Pair) **VIB-16609-SS**

Outside Door Handle Screw Kits

1928/34 S/S 4 pcs for metal frame doors
1928/34 S/S 8 pcs for sedans with wood frame doors

VIA-702350-SKM

VIA-702350-SKW



VIA-702350-0

Outside Door Handles

1928-29 Closed Car - Locking (Pair)	VIA-702350-AL
1928-29 Closed Car - Non Locking (Each)	VIA-702351-A
1928-33 Roadster & Phaeton (Each)	VIA-702350-0
1930-31 Coupe, Tudor and Closed Cab Pickup L/H	VIA-702351-B
1932 Closed Car Except 3 Window & Cabriolet RH	VIB-702350
1932 Closed Car Except 3 Window & Cabriolet LH	VIB-702351
1932 3 Window & Cabriolet RH	VI40-702350
1932 3 Window & Cabriolet LH	VI40-702351
1933-34 Closed Car RH	VI40-702350
1933-34 Closed Car LH	VI40-702351
1932 3 Window & Cabriolet - Locking (Pair)	VI40-702350/1-L
1933-34 Closed Car - Locking (Pair)	VI40-702350/1-L
1932-34 Pickup	VI46-702350-P
1935-36 Pickup	VI50-702350



VIB-702351

VI40-702351

VI40-702350/1-L

BOOT/TRUNK LID STRIKER

Fits Model A Ford 1928-31 - Black
VIA-41615



1937 Trunk Handle

Precision die-cast and chrome-plated with threaded shaft and 2 keys.

1937 Trunk Handle

BD78-702352

Bob Drake 1937 Deck Lid Handle

New original. Stainless steel.

Key and cylinder not included.

VI48-702352-B



BD78-702352-S

Deck & Rumble Lid Handles

1928-31 Deck/Rumble Lid Handle - Locking	VIA-702352
1932-34 Deck/Rumble Lid Handle	VI40-702352
1935-36 Deck/Rumble Lid Handle	VI48-702352-B
1928-37 Deck/Rumble Lid Handle Rubber	VIA-702356-E
1938-39 Woody Tailgate Handle	VI48-702352-B

1940 Deluxe

Door Handle Chrome

Hot rod handles and cranks are shaped just like the original styles, except they're all chrome to add cool, retro detail. Chrome. Use with 01A-7022618-D Escutcheon BD01A-7022600-D Escutcheon use with BD01A-7022600-D BD01A-7022618-B



1940 Deck Handle & Base Complete

Works of art—no details overlooked, they're "Drake Quality". Every component perfectly matches the factory-original. Ready to install with stainless key cover and keys. Handle, base, glass lens, lens gaskets, 2 bulbs - 6 & 12-volt, wiring, special socket, extension nuts, inner base, shaft seal, rubber pad, key cylinder with 2 keys. All mounting hardware included. Complete Kit.

BD01A-7043500-K



Outside Door Handle;

Fits - 1936 Deluxe Car, 1937 Pickup

Beautifully chrome-plated die-cast with superb detail. Made to last a lifetime. All handles come with shafts. (Some styles may require the shaft to be shortened and/or notched for proper fitting to your latch, as we offer shaft lengths suitable to accommodate your own custom options.). BD68-702350-B



DOOR HANDLE

ESCUTCHEON SET

Model A 1928-31 for inside door opener, chrome finish (4 Pieces)

VIB-46270-AS



Windshield Roll Out Handle

Die cast and chrome plated like the original.

1935

BD48-701347

1936

BD68-701347-A



Door Lock Cylinder & Keys;

Fits - 1935-41

Flipper with indented circle & raised notch.

Each comes with 2 keys.

BD48-702302



EXTERIOR MIRRORS



4" Street Rod Mirrors

• Stainless Steel • Sold in pairs

• 2 Stud Mount

4" Retro Mirrors

RPCR6615



4" Chrome Mirror

• Chrome Steel • Short Arm

• Fits Driver or Pass. Side

3" Chrome Peep Mirror RPCR6608

4" Chrome Peep Mirror RPCR6610

4" Chrome Peep Mirror w/ Long Arm RPCR6609



4.5" Chrome Mirror

• Chrome Steel • Straight Arm

• Fits Driver or Pass. Side

Chrome Mirror RPCR6611



SO-CAL Swan Neck Outside Mirror

Features chrome die-cast swan neck arm with stainless steel mirror head, held by bullet nut. Universal applications for all models.

Swan Neck Mirror Base Gasket

Pair of Outside Mirrors

Passenger Side Mirror

Drivers Side Mirror

S0001-50103

S0001-50100

S0001-50101

S0001-50102



California

Swan Style

Mirrors

California Swan Style

Mirrors with oval heads and two mounting studs. Sold as pairs.

Swan Style Mirrors with Oval Head

BDHR-18402/3

Retro Swan Style Mirrors

Retro Swan Style Mirrors with round heads and two mounting studs. Sold as pairs.

Swan Style Mirrors with Round Head

BDU-18402/3



4" Peep Mirror with Build-In LED Turn Signal

UPC5001-LED



Post Mounted

Has a threaded 1/4-20 stud.

Round Head

Rectangle Head



VIBA-17700-P

VIBA-17700-AP

Door Hinge Pin Mirrors

Stainless steel mirror heads with chrome cast arms.

1932 Closed Car

VIB-17741

1932-34 Pickup

VI46-17741

1935-40 Passenger

VI68-17741

1948-52 Pickup



Windshield Post Mount Mirrors

A classic design that was an original '32 accessory, it even looks great on closed cars. Features a chrome arm with 3/8 x 24 mounting threads and a highly polished stainless steel head.

Fits RH & LH.

• "Shorty" with 3" Long Mounting Arm

• "Stocker" with 5" Long Mounting Arm

VI18-17700-CHP

VI18-17700-P



1930-31 Passenger Side Hinge Pin Mirror

Model A closed car mirrors mount using a longer hinge pin that has a threaded end with an acorn nut lock washer. Chrome plated with a stainless steel mirror head.

1930-31 Passenger Side Hinge Pin Mirror LHS

VIA-17741-BL

1930-31 Passenger Side Hinge Pin Mirror RHS

VIA-17741-BR



Door Hinge Mirror; Fits - 1932-34 Pickup

Chrome arm & stainless steel head. Fits RH & LH. Includes door pin & mounting hardware. Comes with stainless hinge pin with polished head, 12-24 x 1/2in. long set screw and lock washer. For a correct original installation. Hinge opening 2in.

BD46-17741



Peep Mirrors

Stainless steel

mirror head.

Chrome plated die cast arms

Universal door edge mounting, fits left or right hand.

4" Round Peep Mirror

3" Round Peep Mirror

4" Round Curved Arm Peep Mirror

UPC5001

UPC5001-1

UPC5007



Maltese Mirrors

Maltese cross mirror

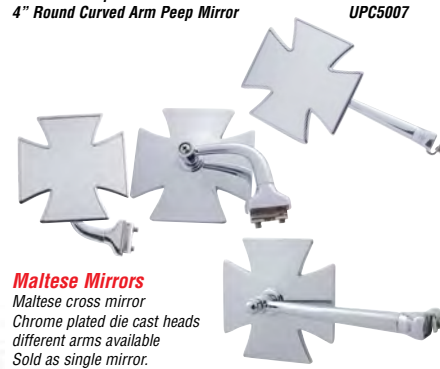
Chrome plated die cast heads

different arms available

Sold as single mirror.

5-1/2" Straight Arm Mirror
Peep Mirror Arm

UPM1005
UPM1006





Mirror Heads

Billet Specialties mirrors will give your car that clean, high-tech look. The mirror heads feature the latest 3D machining and the arms work for both top and bottom mount. Mirror heads and arms are sold individually.

Product Features

- Precision machined from 6061-T6 billet aluminium
- Industry leading mirror finish polish
- High quality glass for distortion free viewing
- Stainless steel swivel with a nylon bushing for smooth positive adjustment
- Stainless steel 10-24 button head screws included with mirror arms

Round Mirror 3-1/8 Diameter	BS73120
Large Rectangle (1-3/4 x 5-1/4")	BS73420
Oval Mirror (2-5/16" x 4-3/16")	BS73520
Offset Round (3" Dia)	BS73620
Offset Round (4" Dia)	BS73720
Offset Oval (2-5/16" x 4-3/16")	BS73920
Oblique Left Side	BS73820
Oblique Right Side	BS73825



Profile Mirror Kits

Add timeless style with Billet Specialties new forged 6061-T6 aluminium mirror arms. Forged for ultimate strength, 3-D machined and mirror polished for style. **Sold in pairs** complete with your choice of round, oval, oblique and 3" or 4" diameter round offset mirror heads. Arms feature multiple mounting holes for a secure fit and can be mounted for top mount or bottom mount applications. Mirror heads feature a stainless steel swivel with a nylon bushing for smooth positive adjustment. Stainless hardware is included.

Profile Mirrors Round	BS74120
Profile Mirrors Oval	BS74520
Profile Mirrors Oblique	BS74820
Profile Mirrors 3" Dia Offset Round	BS74620
Profile Mirrors 4" Dia Offset Round	BS74720
Profile Mirrors Offset Oval	BS74920

FUELS

VP RACE FUELS

VP Racing has been making the best fuels for motor sports since 1975. In fact, in race venues not controlled by a fuel rule, VP consistently fuels more winners than any other fuel company. VP's fuels have a well-deserved reputation for superior power and consistency -- as illustrated by the NHRA Pro Stock Champions who have made VP their fuel of choice for 29 consecutive years -- a record unmatched by any major sponsor in the industry. One of the reasons for VP's consistent success is our focus. We don't manufacture pump gas and we don't run a chain of convenience stores. We make power. And we make it for racing.



UNLEADED FUELS

Motorsport 100

Designed for aluminium head engines with CRs up to 13:1 and cast iron heads up to 14:1. Allows for more advanced timing than pump gas in normally aspirated engines, as well as an increase in boost on turbo and supercharged engines. The higher octane also permits use of more powerful nitrous oxide systems. Works well in the latest generation of electronically controlled turbo engines.

- Color: Orange
- Oxygenated: Yes
- Motor Octane: 96
- Specific Gravity: .746 at 60° F

Motorsport 100 (19 Litre)

VPM100E-20

ROO100

Roo100 has been designed for competition use. Roo100 has been homologated by Motorcycling Australia for use in all disciplines of competition, as outlined in GCR 12.9.5 of the 2010 edition of the Manual of Motorcycle Sport. Roo100 is an oxygenated unleaded racing fuel with a MON of 91+ and a RON of 99+ that also meets the Australian Petrol Fuel Quality Standard making it street legal. Roo100 offers better protection against detonation in harsh racing conditions, makes up to 3% more Horsepower and Torque than pump fuel and gives you exact consistency so you don't have to alter your tune up from drum to drum. Due to Roo100's specific gravity (.711 @ 60F) and oxygen content it requires a 4% to 6% increase in fuel volume over most premium unleaded (non oxygenated) fuels. **MA approved**

- Colour: Fluro Yellow
- Oxygenated: YES
- Motor Octane 91+
- Specific Gravity: .711 at 60° F

ROO100 (19 Litre)

VPROO100-19

VP EXPORT

Designed for FIA/CAMS rally cars with 4-stroke atmospheric and Group N Turbo engines.

Makes significantly more power and torque than pump fuel along with faster accelerations and shorter turbo response time.

The perfect fuel for all forms of circuit racing requiring the focus to be on fast acceleration and consistency rather than all out horsepower.

This fuel is used for those wanting the best out of the circuit racing vehicle without compromise, and not being limited to 98 RON fuel.

Will require retuning of the engine, including increasing fuel curve due to its oxygenation levels.

Colour: Fluro Clear Motor Octane: 87 Research Octane: 101

R+M/2: 94 Oxygen Content: 2.7 Mass%

VP Export (19Litre)

VPEXPORT-19

Motorsport 109

Produces more power than any other unleaded fuel. Recommended for higher boost applications with CRs up to 11:1 or naturally aspirated engines up to 13:1.

- Color: Clear
- Oxygenated: Yes
- Motor Octane: 109
- Specific Gravity: .722 at 60° F

Motorsport 109 (19 Litre)

VPM109-20L

Motorsport 109 (200 Litre)

VPM109-205

ROO KX

Homologated for Karting Australia, Karting Extreme is the Ultimate blend that provides maximum power on the track. Suitable for use in Karting applications that need to conform to CIK-FIA specifications.

- Specific Gravity: 0.758 @ 60°F/15.6°C

- Color: Orange

- MON: 89.6

- RON: 102

- R+M/2: 95.8

- RVP: 7.58psi/55kpa Oxygen

- Content: 2.6% by weight

- Stoichiometric Ratio: 14.38

VPROO KX (19 Litre)

VPROO KX-19

C10

The best non-oxygenated unleaded racing gasoline on the market. C10 does not contain any metal compounds and will not harm catalytic converters or oxygen sensors. C10 can be used in a majority of applications.

C10 complies with the Australian Petrol Standards and is a street legal fuel.

VPC10-19

ROO99

Homologated with Motorcycling Australia for use in 2019.

Roo 99 is a cost-effective, unleaded replacement for Avgas & PULP 98.

Compared with other 100 octane racing fuels that only have a Motor Octane of 89. Roo 99 has a Motor Octane of 93.5, this fuel will keep your engine safe while making maximum power on the track.

Power Gains: Roo 99 will give you up to 3% more power than AVGAS.

Tuning Tips: Can be tipped straight in. For maximum power, we recommend a fuel increase of 1-3%.

VPROO99-19

ETHANOL FUELS

C85

If you're committed to using E85 type fuels, C85 is by far your best choice. Conventional E85 fuels are notoriously inconsistent. By contrast, C85 is blended with a consistent proportion of ethanol and every other component in every drum.

C85 makes up to 4% more power and torque than conventional E85. With higher quality pure components, C85 is superior to E85 in terms of the cooling effect, resistance to detonation and even includes corrosion inhibitors to fight the issues presented by ethanol. C85 works well in drag racing, oval track, off-road and virtually any other automotive application, in particular, forced induction applications due to its lower vapour pressure.

DO NOT USE WITH INJECTORS THAT ARE NOT COMPATIBLE WITH MTBE.

VPC85-19

X85

Hassle free E85. Blended with 85% ethanol and 15% top quality hydrocarbons every time.

VPX85-19

DIESEL FUELS

TORQ DX, diesel race fuel formula!

Tests have shown to offer more power, more torque and more consistent engine temperatures. TORQ DX represents the next generation in VP's quest to develop top performing diesel racing fuels.

Brian Scott, of Prairie Performance, tested TORQ DX against VP TORQ using an 1150 Hp engine and witnessed significant power gains.

"We saw a 15-20 Hp increase across the whole rpm range, but it worked particularly well at driving the turbo on the bottom end. At Nixa, Missouri-based Baille Diesel, Jim Greenway tested TORQ DX against his custom blend of enhanced No. 2 diesel, something he's used for the last 10 years.

"TORQ DX gave us a 30 Hp increase on our 1300 Hp engine while slightly lowering engine temperatures and keeping them more consistent across the rpm range. I have no doubt this fuel will offer superior performance in tractor pulling, drag racing, road racing or any other diesel application."

VPTORQDX-19

METHANOL & NITROMETHANE

M-1 Methanol

M-1 Racing Methanol has a 99.95% minimum purity - the highest purity available. With M1, engines run cooler and are less subject to corrosion. VP uses only lined drums which prohibit rust, corrosion and metal deposits that can contaminate fuel delivery systems. Recommended for all methanol-legal racing applications.

M-1 Methanol (19 Litre)

VPM1-20

M-1 Methanol (200 Litre)

VPM1-205

VP M5 Methanol

M5 is simply the best performing methanol on the market. Using nitrated compounds to make more power than M3, M5 will also offer the same or better protection against detonation. Like M3, M5 offers a wider range for tuning and will offer the same consistency run to run as M3. M5 also reduces noxious methanol fumes, although not quite as well as M3.

M5 is not pure methanol and won't pass a water test.

M5 Methanol (19 Litre)

VPROO5-20

M5 Methanol (200 Litre)

VPROO5-205

AT Racing Methanol

Coogee Methanol is the only 100% pure Methanol produced in Australia. Used by many Top Alcohol and Doorslammer teams.

AT Racing Methanol (19 Litre)

RPCOOGEE-20L

AT Racing ethanol (200 Litre)

RPCOOGEE-200

Upper Cylinder Lubricant

VP's M2 Fuel System Additive for Methanol Engines leaves a thin film of lubrication to protect against corrosion between races and protects valves, guides, cylinder walls, fuel pumps, and aluminium fuel systems.

Strawberry scent bottles available, to mask the harsh chemical smell of methanol and reduce irritation to eyes and nose allowing drivers and mechanics to work more comfortably. 1 bottle treats 205 Litres of fuel.

M2 Upper Lube

VPM2-UPLUBE

M2 Upper Lube (Strawberry)

VPM2-UPLUBESS



Racing Castor Oil

AT Racing Castor Oil is specially formulated for the high RPM, high load demands of karting, motocross and other 2-stroke applications. Blended with the most advanced extreme pressure (EP) additives to enhance the natural lubrication of castor oil for extended engine life. Ideal lubricant for gasoline, alcohol and nitro fuels.

AT Racing Castor Oil (4 Litre)

VPAT-CASTOR

Racing Nitromethane (Nitro)

99.9% Highest quality pure Nitromethane, as used by top teams world wide. Each drum is tested for purity and consistency. Mixes with methanol for drag racing, oval track and hobby applications.

Nitromethane (200 Litre)

RPNITRO-500LB

COOLANT ADDATIVES

STAY FROSTY High Performance

- Ready-to-Use Premix High-Performance Engine Coolant
- Contains Wetting Agents for Better Cooling
- Non-Toxic Propylene Glycol Freeze Protection
- Reduces Cylinder Head Temps By Up To 25°F
- Maximizes Horsepower and Torque
- Protects all metals from corrosion/electrolysis, including aluminium
- Prevents scales/deposits that reduce heat transfer

VP-FROSTY-H

