

AEROFLOW

PERFORMANCE PRODUCTS

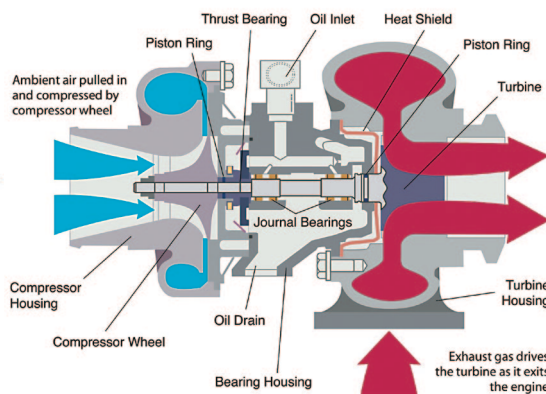
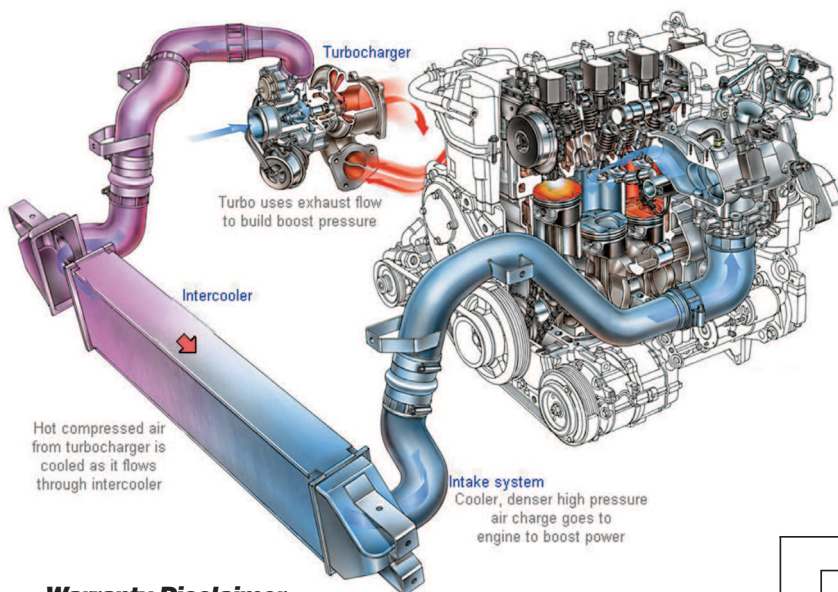


**2019 TURBO
& Turbo Accessories
Catalogue V1**



BOOSTED TURBOCHARGERS by AEROFLOW

Aeroflow Performance Boosted turbochargers are designed specifically for the enthusiast who wants optimal performance at a competitive price. Boosted Turbochargers have a range of specific turbos to meet your power goals, driving style and budget. Boosted turbochargers utilise billet compressor wheels and feature the latest aerodynamic design that maximises horsepower and boost response throughout the rev range. The turbine wheel is constructed from Inconel, a Super Alloy that maintains strength during prolonged exposure to extremely high exhaust gas temperatures. Boosted Turbochargers are available in 360deg journal bearing, dual and triple ceramic ball bearing cartridges designed to prolong the turbo lifespan and improve shaft balance. Boosted Turbochargers are also available in oil/water or oil cooled versions to help keep temperatures to a minimum. The boosted range of turbos are available with a ported shroud compressor cover housing which increases surge resistance and provides reliable, continuous power throughout the engine's RPM. Boosted turbochargers are available for a direct bolt-on for some Ford's and Nissan's with further models in development. Boosted turbos are available in natural aluminium or high temp black compressor cover options.



Warranty Disclaimer

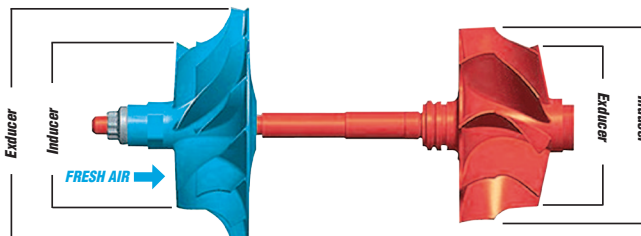
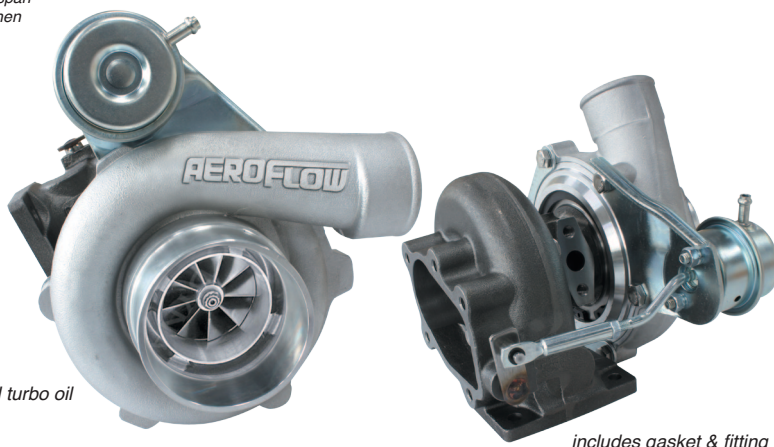
Boosted by Aeroflow products are manufactured to industry standard specifications from quality materials. Utmost care is taken to ensure products are free from blemishes, inconsistencies and defects. Aeroflow products carry a one year warranty from the date of purchase however warranty will be void if the product is not used in the correct way for which it was intended. Boosted Turbochargers and replacement parts are designed for street use only. Products used in race applications and/or products that have been modified, damaged, incorrectly installed or incorrectly/poorly maintained are not covered by this warranty. Proof of purchase will be required for all warranty claims.

This Boosted ball bearing turbocharger from Aeroflow Performance does not feature an internal oil flow restrictor. A -4AN fitting is provided with a built in external oil feed restrictor and must be used to ensure oil does not push past the seals and shorten the life span of the turbocharger. Should you choose not to use the provided -4AN fitting then an external oil feed restrictor (AF399-04 or AF399-03, available for purchase separately) must be installed in the turbo oil feed line at the engine side. Failure to use a suitable restrictor will void the warranty.

BOOSTED 4628 .64

Part No: AF8005-2000 Natural Cast
Part No: AF8005-2000BLK Hi Temp Black

- Recommended horsepower rating: 200-475HP
- Recommended engine displacement: 1.4L to 2.5L
- Dual ceramic ball bearing
- Billet aluminium compressor wheel.
- Ported shroud compressor housing cover.
- Speed sensor port included in compressor cover. (Sold separately AF8050-1010)
- Inlet flange single layer gasket, turbo drain gasket and -4AN turbo oil feed fitting with restrictor included in turbo kit.
- Turbine inlet gasket sold separately AF9557-0001
- Recommended turbo drain adapter AF463-01 or AF463-05
- M14x1.5mm coolant fittings sold separately



COMPRESSOR

Inducer	Exducer	Extended Tip	A/R
46mm	60.1mm	62.24mm	0.60

TURBINE

Inducer	Exducer	A/R
53.9mm	47mm	0.64

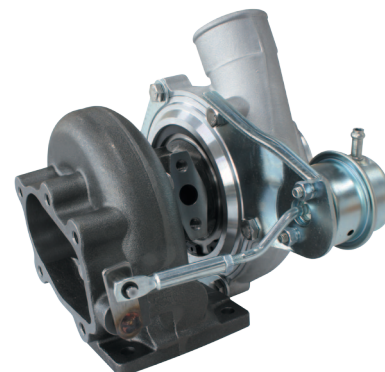
Compressor Inlet	Compressor Outlet	Turbine Inlet flange	Turbine Outlet flange	Wastegate
3" Slip fit	2" Slip fit	T25 / T28	5 Bolt	Internal wastegate with 8.7PSI actuator



BOOSTED 4628 .86

Part No: AF8005-2001 Natural Cast
Part No: AF8005-2001BLK Hi Temp Black

- Recommended horsepower rating: 200-400HP
- Recommended engine displacement: 1.4L to 2.5L
- Dual ceramic ball bearing
- Billet aluminium compressor wheel.
- Ported shroud compressor housing cover.
- Speed sensor port included in compressor cover.
(Sold separately AF8050-1010)
- Inlet flange single layer gasket, turbo drain gasket and -4AN turbo oil feed fitting with restrictor included in turbo kit.
- Turbine inlet gasket sold separately AF9557-0001
- Recommended turbo drain adapter AF463-01 or AF463-05
- M14x1.5mm coolant fittings sold separately



includes gasket & fitting

COMPRESSOR

Inducer	Exducer	Extended Tip	A/R
46mm	60.1mm	62.24mm	0.60

TURBINE

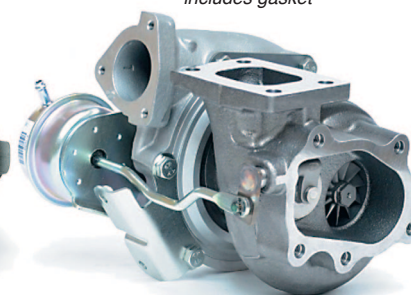
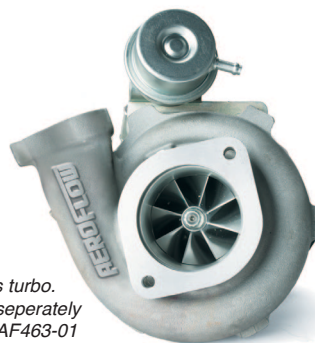
Inducer	Exducer	A/R
53.9mm	47mm	0.86

Compressor Inlet	Compressor Outlet	Turbine Inlet flange	Turbine Outlet flange	Wastegate
3" Slip fit	2" Slip fit	T25 / T28	5 Bolt	Internal wastegate with 8.7PSI actuator

BOOSTED 4728 .64 NISSAN

Part No: AF8005-2002 Natural Cast

- Recommended horsepower rating: 200-400HP
- Recommended engine displacement: 1.4L to 2.5L
- Dual ceramic ball bearing
- Billet aluminium compressor wheel.
- Nissan S14 / S15 2 bolt compressor housing cover inlet.
- Nissan S14 / S15 3 bolt compressor housing cover outlet.
- Oil and water lines sold separately
AF30-1001 for S13, AF30-1002 for S14 / S15
- Aftermarket oil feed line & turbo line restrictor must be used with this turbo.
- Will suit standard coolant lines or M14 x1.5mm coolant fittings sold separately
- Will suit standard turbo drain or turbo drain adapter sold separately AF463-01 or AF463-05
- Turbine inlet gasket sold separately AF9557-0001



includes gasket

COMPRESSOR

Inducer	Exducer	Extended Tip	A/R
46mm	60.1mm	62.24mm	0.60

TURBINE

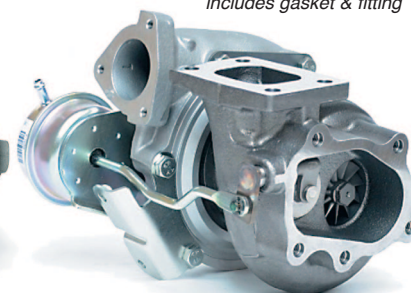
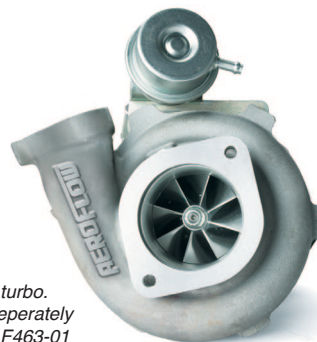
Inducer	Exducer	A/R
53.9mm	47mm	0.64

Compressor Inlet	Compressor Outlet	Turbine Inlet flange	Turbine Outlet flange	Wastegate
Nissan S14 2 bolt	Nissan S14 3 bolt	T25 / T28	5 Bolt	Internal wastegate with 8.7PSI actuator

BOOSTED 4728 .86 NISSAN

Part No: AF8005-2003 Natural Cast

- Recommended horsepower rating: 200-400HP
- Recommended engine displacement: 1.4L to 2.5L
- Dual ceramic ball bearing
- Billet aluminium compressor wheel.
- Nissan S14 / S15 2 bolt compressor housing cover inlet.
- Nissan S14 / S15 3 bolt compressor housing cover outlet.
- Oil and water lines sold separately
AF30-1001 for S13, AF30-1002 for S14 / S15
- Aftermarket oil feed line & turbo line restrictor must be used with this turbo.
- Will suit standard coolant lines or M14 x1.5mm coolant fittings sold separately
- Will suit standard turbo drain or turbo drain adapter sold separately AF463-01 or AF463-05
- Turbine inlet gasket sold separately AF9557-0001



includes gasket & fitting

COMPRESSOR

Inducer	Exducer	Extended Tip	A/R
46mm	60.1mm	62.24mm	0.60

TURBINE

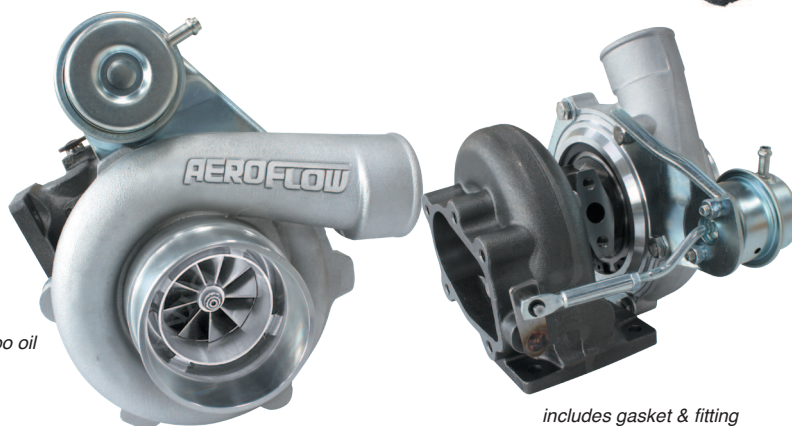
Inducer	Exducer	A/R
53.9mm	47mm	0.86

Compressor Inlet	Compressor Outlet	Turbine Inlet flange	Turbine Outlet flange	Wastegate
Nissan S14 2 bolt	Nissan S14 3 bolt	T25 / T28	5 Bolt	Internal wastegate with 8.7PSI actuator

BOOSTED 5428 .64

Part No: AF8005-2005 Natural Cast
Part No: AF8005-2005BLK Hi Temp Black

- Recommended horsepower rating: 250-445HP
- Recommended engine displacement: 1.8L to 3L
- Dual ceramic ball bearing
- Billet aluminium compressor wheel.
- Ported shroud compressor housing cover.
- Speed sensor port included in compressor cover.
(Sold separately AF8050-1010)
- Inlet flange single layer gasket, turbo drain gasket and -4AN turbo oil feed fitting with restrictor included in turbo kit.
- Turbine inlet gasket sold separately AF9557-0001
- Recommended turbo drain adapter AF463-01 or AF463-05
- M14x1.5mm coolant fittings sold separately



includes gasket & fitting

COMPRESSOR

Inducer	Exducer	Extended Tip	A/R
54mm	71mm	73.79mm	0.60

TURBINE

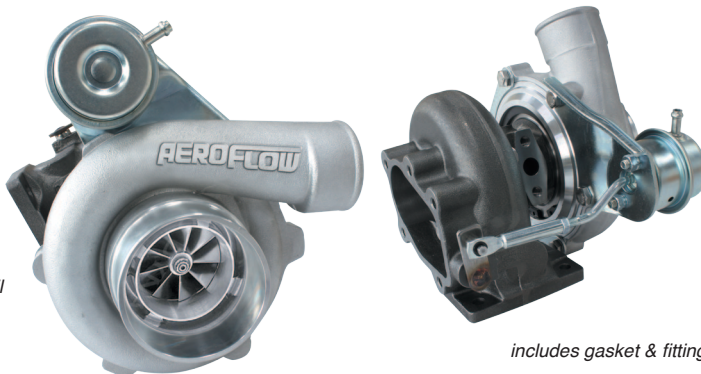
Inducer	Exducer	A/R
53.9mm	47mm	0.64

Compressor Inlet	Compressor Outlet	Turbine Inlet flange	Turbine Outlet flange	Wastegate
3" Slip fit	2" Slip fit	T25 / T28	5 Bolt	Internal wastegate with 8.7PSI actuator

BOOSTED 5428 .86

Part No: AF8005-2006 Natural Cast
Part No: AF8005-2006BLK Hi Temp Black

- Recommended horsepower rating: 250-445HP
- Recommended engine displacement: 1.8L to 3L
- Dual ceramic ball bearing
- Billet aluminium compressor wheel.
- Ported shroud compressor housing cover.
- Speed sensor port included in compressor cover.
(Sold separately AF8050-1010)
- Inlet flange single layer gasket, turbo drain gasket and -4AN turbo oil feed fitting with restrictor included in turbo kit.
- Turbine inlet gasket sold separately AF9557-0001
- Recommended turbo drain adapter AF463-01 or AF463-05
- M14x1.5mm coolant fittings sold separately



includes gasket & fitting

COMPRESSOR

Inducer	Exducer	Extended Tip	A/R
54mm	71mm	73.79mm	0.60

TURBINE

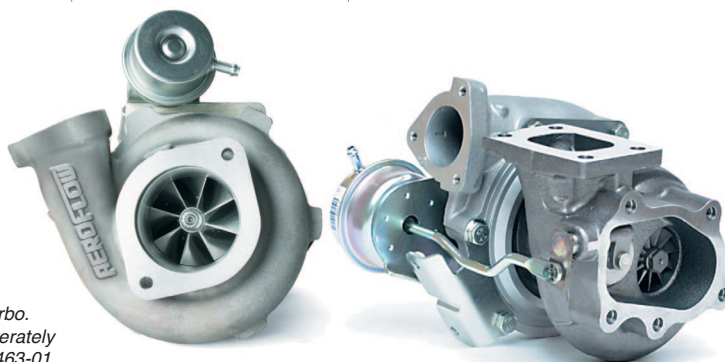
Inducer	Exducer	A/R
53.9mm	47mm	0.86

Compressor Inlet	Compressor Outlet	Turbine Inlet flange	Turbine Outlet flange	Wastegate
3" Slip fit	2" Slip fit	T25 / T28	5 Bolt	Internal wastegate with 8.7PSI actuator

BOOSTED 5328 .64 NISSAN

Part No: AF8005-2007 Natural Cast

- Recommended horsepower rating: 250-445HP
- Recommended engine displacement: 1.8L to 3L
- Dual ceramic ball bearing
- Billet aluminium compressor wheel.
- Nissan S14 / S15 2 bolt compressor housing cover inlet.
- Nissan S14 / S15 3 bolt compressor housing cover outlet.
- Oil and water lines sold separately
AF30-1001 for S13, AF30-1002 for S14 / S15
- Aftermarket oil feed line & turbo line restrictor must be used with this turbo.
- Will suit standard coolant lines or M14 x1.5mm coolant fittings sold separately
- Will suit standard turbo drain or turbo drain adapter sold separately AF463-01 or AF463-05
- Turbine inlet gasket sold separately AF9557-0001



includes gasket & fitting

COMPRESSOR

Inducer	Exducer	Extended Tip	A/R
54mm	71mm	73.79mm	0.60

TURBINE

Inducer	Exducer	A/R
53.9mm	47mm	0.64

Compressor Inlet	Compressor Outlet	Turbine Inlet flange	Turbine Outlet flange	Wastegate
Nissan S13 2 bolt	Nissan S13 3 bolt	T25 / T28	5 Bolt	Internal wastegate with 8.7PSI actuator

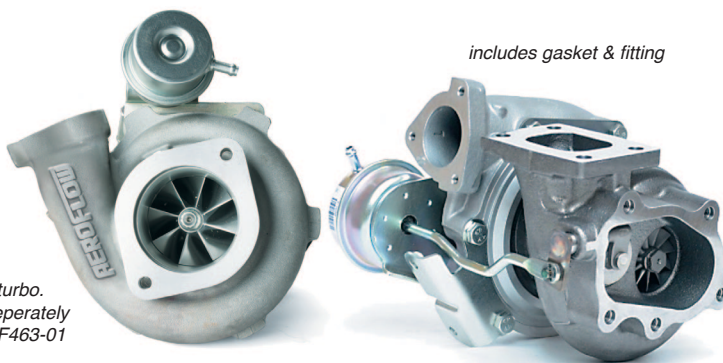


BOOSTED 5328 .86 NISSAN

Part No: AF8005-2008

Natural Cast

- Recommended horsepower rating: 250-445HP
- Recommended engine displacement: 1.8L to 3L
- Dual ceramic ball bearing
- Billet aluminium compressor wheel.
- Nissan S14 / S15 2 bolt compressor housing cover inlet.
- Nissan S14 / S15 3 bolt compressor housing cover outlet.
- Oil and water lines sold separately AF30-1001 for S13, AF30-1002 for S14 / S15
- Aftermarket oil feed line & turbo line restrictor must be used with this turbo.
- Will suit standard coolant lines or M14 x1.5mm coolant fittings sold separately
- Will suit standard turbo drain or turbo drain adapter sold separately AF463-01 or AF463-05
- Turbine inlet gasket sold separately AF9557-0001



COMPRESSOR

TURBINE

Inducer	Exducer	Extended Tip	A/R
54mm	71mm	73.79mm	0.60

Inducer	Exducer	A/R
53.9mm	47mm	0.86

Compressor Inlet	Compressor Outlet	Turbine Inlet flange	Turbine Outlet flange	Wastegate
Nissan S13 2 bolt	Nissan S13 3 bolt	T25 / T28	5 Bolt	Internal wastegate with 8.7PSI actuator

BOOSTED 5455 .63

Part No: AF8005-3000

Natural Cast

Part No: AF8005-3000BLK Hi Temp Black

- Recommended horsepower rating: 340-650HP
- Recommended engine displacement: 1.8L to 3L
- Dual ceramic ball bearing
- Billet aluminium compressor wheel.
- Ported shroud compressor housing cover.
- Speed sensor port included in compressor cover. (Sold separately AF8050-1010)
- External wastegate sold separately.
- Inlet flange single layer gasket, turbo drain gasket and -4AN turbo oil feed fitting with restrictor included in turbo kit.
- Turbine inlet gasket sold separately AF9557-0005
- Recommended turbo drain adapter AF463-01 or AF463-05.
- M14x1.5mm coolant fittings sold separately.
- V-band sold separately AF8080-1000



COMPRESSOR

TURBINE

Inducer	Exducer	Extended Tip	A/R
54mm	71mm	73.79mm	0.60

Inducer	Exducer	A/R
60mm	55mm	0.63

Compressor Inlet	Compressor Outlet	Turbine Inlet flange	Turbine Outlet flange	Wastegate
4" Slip fit	2" Slip fit	T3	V band (AF8080-1000)	External wastegate sold separately

BOOSTED 5455 .82

Part No: AF8005-3001

Natural Cast

Part No: AF8005-3001BLK Hi Temp Black

- Recommended horsepower rating: 340-650HP
- Recommended engine displacement: 1.8L to 3L
- Dual ceramic ball bearing
- Billet aluminium compressor wheel.
- Ported shroud compressor housing cover.
- Speed sensor port included in compressor cover. (Sold separately AF8050-1010)
- External wastegate sold separately.
- Inlet flange single layer gasket, turbo drain gasket and -4AN turbo oil feed fitting with restrictor included in turbo kit.
- Turbine inlet gasket sold separately AF9557-0005
- Recommended turbo drain adapter AF463-01 or AF463-05.
- M14x1.5mm coolant fittings sold separately.
- V-band sold separately AF8080-1000



COMPRESSOR

TURBINE

Inducer	Exducer	Extended Tip	A/R
54mm	71mm	73.79mm	0.60

Inducer	Exducer	A/R
60mm	55mm	0.82

Compressor Inlet	Compressor Outlet	Turbine Inlet flange	Turbine Outlet flange	Wastegate
4" Slip fit	2" Slip fit	T3	V band (AF8080-1000)	External wastegate sold separately

BOOSTED 5455 1.06

Part No: AF8005-3002 Natural Cast
 Part No: AF8005-3002BLK Hi Temp Black
 • Recommended horsepower rating: 340-650HP
 • Recommended engine displacement: 1.8L to 3L

- Dual ceramic ball bearing
- Billet aluminium compressor wheel.
- Ported shroud compressor housing cover.
- Speed sensor port included in compressor cover.
 (Sold separately AF8050-1010)
- External wastegate sold separately.
- Inlet flange single layer gasket, turbo drain gasket and -4AN turbo oil feed fitting with restrictor included in turbo kit.
- Turbine inlet gasket sold separately AF9557-0005
- Recommended turbo drain adapter AF463-01 or AF463-05.
- M14x1.5mm coolant fittings sold separately.
- V-band sold separately AF8080-1000



COMPRESSOR

Inducer	Exducer	Extended Tip	A/R
54mm	71mm	73.79mm	0.60

TURBINE

Inducer	Exducer	A/R
60mm	55mm	1.06

Compressor Inlet	Compressor Outlet	Turbine Inlet flange	Turbine Outlet flange	Wastegate
4" Slip fit	2" Slip fit	T3	V band (AF8080-1000)	External wastegate sold separately

BOOSTED 5855 .63

Part No: AF8005-3005 Natural Cast
 Part No: AF8005-3005BLK Hi Temp Black
 • Recommended horsepower rating: 400-750HP
 • Recommended engine displacement: 1.8L to 3L

- Dual ceramic ball bearing
- Billet aluminium compressor wheel.
- Ported shroud compressor housing cover.
- Speed sensor port included in compressor cover.
 (Sold separately AF8050-1010)
- External wastegate sold separately.
- Inlet flange single layer gasket, turbo drain gasket and -4AN turbo oil feed fitting with restrictor included in turbo kit.
- Turbine inlet gasket sold separately AF9557-0005
- Recommended turbo drain adapter AF463-01 or AF463-05.
- M14x1.5mm coolant fittings sold separately.
- V-band sold separately AF8080-1000



COMPRESSOR

Inducer	Exducer	Extended Tip	A/R
58mm	76.2mm	80.42mm	0.60

TURBINE

Inducer	Exducer	A/R
60mm	55mm	0.63

Compressor Inlet	Compressor Outlet	Turbine Inlet flange	Turbine Outlet flange	Wastegate
4" Slip fit	2" Slip fit	T3	V band (AF8080-1000)	External wastegate sold separately

BOOSTED 5855 .82

Part No: AF8005-3006 Natural Cast
 Part No: AF8005-3006BLK Hi Temp Black
 • Recommended horsepower rating: 400-750HP
 • Recommended engine displacement: 1.8L to 3L

- Dual ceramic ball bearing
- Billet aluminium compressor wheel.
- Ported shroud compressor housing cover.
- Speed sensor port included in compressor cover.
 (Sold separately AF8050-1010)
- External wastegate sold separately.
- Inlet flange single layer gasket, turbo drain gasket and -4AN turbo oil feed fitting with restrictor included in turbo kit.
- Turbine inlet gasket sold separately AF9557-0005
- Recommended turbo drain adapter AF463-01 or AF463-05.
- M14x1.5mm coolant fittings sold separately.
- V-band sold separately AF8080-1000



COMPRESSOR

Inducer	Exducer	Extended Tip	A/R
58mm	76.2mm	80.42mm	0.60

TURBINE

Inducer	Exducer	A/R
60mm	55mm	0.82

Compressor Inlet	Compressor Outlet	Turbine Inlet flange	Turbine Outlet flange	Wastegate
4" Slip fit	2" Slip fit	T3	V band (AF8080-1000)	External wastegate sold separately



BOOSTED 5855 1.06

Part No: AF8005-3007

Natural Cast

Part No: AF8005-3007BLK

Hi Temp Black

- Recommended horsepower rating: 400-750HP
- Recommended engine displacement: 1.8L to 3L
- Dual ceramic ball bearing
- Billet aluminium compressor wheel.
- Ported shroud compressor housing cover.
- Speed sensor port included in compressor cover.
- (Sold separately AF8050-1010)
- External wastegate sold separately.
- Inlet flange single layer gasket, turbo drain gasket and -4AN turbo oil feed fitting with restrictor included in turbo kit.
- Turbine inlet gasket sold separately AF9557-0005
- Recommended turbo drain adapter AF463-01 or AF463-05.
- M14x1.5mm coolant fittings sold separately.
- V-band sold separately AF8080-1000

includes gasket & fitting



COMPRESSOR

Inducer	Exducer	Extended Tip	A/R
58mm	76.2mm	80.42mm	0.60

TURBINE

Inducer	Exducer	A/R
60mm	55mm	1.06

Compressor Inlet	Compressor Outlet	Turbine Inlet flange	Turbine Outlet flange	Wastegate
4" Slip fit	2" Slip fit	T3	V band (AF8080-1000)	External wastegate sold separately

BOOSTED 5862 .63

Part No: AF8005-3010

Natural Cast

Part No: AF8005-3010BLK

Hi Temp Black

- Recommended horsepower rating: 400-750HP
- Recommended engine displacement: 1.8L to 3L
- Dual ceramic ball bearing
- Billet aluminium compressor wheel.
- Ported shroud compressor housing cover.
- Speed sensor port included in compressor cover.
- (Sold separately AF8050-1010)
- External wastegate sold separately.
- Inlet flange single layer gasket, turbo drain gasket and -4AN turbo oil feed fitting with restrictor included in turbo kit.
- Turbine inlet gasket sold separately AF9557-0005
- Recommended turbo drain adapter AF463-01 or AF463-05.
- M14x1.5mm coolant fittings sold separately.
- V-band sold separately AF8080-1000

includes gasket & fitting



COMPRESSOR

Inducer	Exducer	Extended Tip	A/R
58mm	76.2mm	80.42mm	0.60

TURBINE

Inducer	Exducer	A/R
68mm	62.3mm	0.63

Compressor Inlet	Compressor Outlet	Turbine Inlet flange	Turbine Outlet flange	Wastegate
4" Slip fit	2.5" Slip fit	T3	V band (AF8080-1000)	External wastegate sold separately

BOOSTED 5862 .82

Part No: AF8005-3011

Natural Cast

Part No: AF8005-3011BLK

Hi Temp Black

- Recommended horsepower rating: 400-750HP
- Recommended engine displacement: 1.8L to 3L
- Dual ceramic ball bearing
- Billet aluminium compressor wheel.
- Ported shroud compressor housing cover.
- Speed sensor port included in compressor cover.
- (Sold separately AF8050-1010)
- External wastegate sold separately.
- Inlet flange single layer gasket, turbo drain gasket and -4AN turbo oil feed fitting with restrictor included in turbo kit.
- Turbine inlet gasket sold separately AF9557-0005
- Recommended turbo drain adapter AF463-01 or AF463-05.
- M14x1.5mm coolant fittings sold separately.
- V-band sold separately AF8080-1000

includes gasket & fitting



COMPRESSOR

Inducer	Exducer	Extended Tip	A/R
58mm	76.2mm	80.42mm	0.60

TURBINE

Inducer	Exducer	A/R
68mm	62.3mm	0.82

Compressor Inlet	Compressor Outlet	Turbine Inlet flange	Turbine Outlet flange	Wastegate
4" Slip fit	2.5" Slip fit	T3	V band (AF8080-1000)	External wastegate sold separately

BOOSTED 5862 1.06

Part No: AF8005-3012
Natural Cast
Part No: AF8005-3012BLK
Hi Temp Black

- Recommended horsepower rating: 400-750HP
- Recommended engine displacement: 1.8L to 3.8L
- Dual ceramic ball bearing
- Billet aluminium compressor wheel.
- Ported shroud compressor housing cover.
- Speed sensor port included in compressor cover. (Sold separately AF8050-1010)
- External wastegate sold separately.
- Inlet flange single layer gasket, turbo drain gasket and -4AN turbo oil feed fitting with restrictor included in turbo kit.
- Turbine inlet gasket sold separately AF9557-0005
- Recommended turbo drain adapter AF463-01 or AF463-05.
- M14x1.5mm coolant fittings sold separately.
- V-band sold separately AF8080-1000

includes gasket & fitting



COMPRESSOR

Inducer	Exducer	Extended Tip	A/R
58mm	76.2mm	80.42mm	0.60

TURBINE

Inducer	Exducer	A/R
68mm	62.3mm	1.06

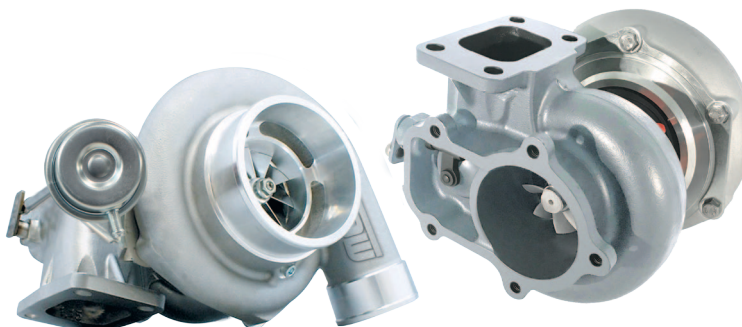
Compressor Inlet	Compressor Outlet	Turbine Inlet flange	Turbine Outlet flange	Wastegate
4" Slip fit	2.5" Slip fit	T3	V band (AF8080-1000)	External wastegate sold separately

BOOSTED 5862 1.06 XR6

Part No: AF8005-3013
Natural Cast
Part No: AF8005-3013BLK
Hi Temp Black

- Recommended horsepower rating: 375-650HP
- Recommended engine displacement: 2.5L to 4.5L
- Dual ceramic ball bearing
- Billet aluminium compressor wheel.
- Ported shroud compressor housing cover.
- Speed sensor port included in compressor cover. (Sold separately AF8050-1010)
- Standard XR6 turbine outlet flange
- Turbo oil line feed sold separately
- Ford XR6 BA BF AF30-1000. Ford XR6 FG AF30-1005
- Recommended turbo drain adapter AF463-01 or AF463-05.
- Dual internal wastegate brackets included to suit both BA/BF & FG models
- Will suit standard coolant lines or M14 x1.5mm coolant fittings sold separately
- Turbine inlet gasket sold separately AF9557-0005

includes gasket & fitting



COMPRESSOR

Inducer	Exducer	Extended Tip	A/R
58mm	76.2mm	80.42mm	0.50

TURBINE

Inducer	Exducer	A/R
68mm	62.3mm	1.06

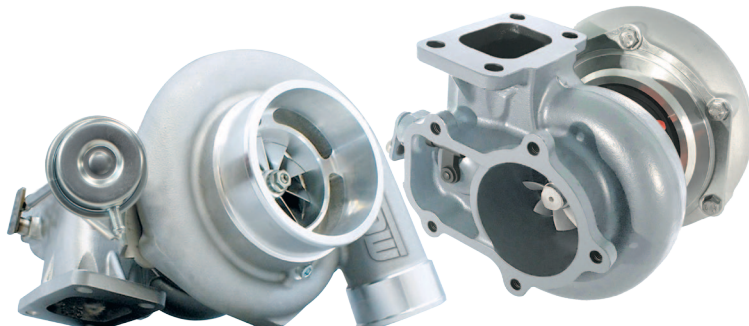
Compressor Inlet	Compressor Outlet	Turbine Inlet flange	Turbine Outlet flange	Wastegate
4" Slip fit	2" Slip fit	T3	XR6 5 bolt	36mm Internal wastegate with 9PSI actuator

BOOSTED 6662 1.06 XR6

Part No: AF8005-3014
Natural Cast
Part No: AF8005-3014BLK
Hi Temp Black

- Recommended horsepower rating: 425-825HP
- Recommended engine displacement: 2.5L to 4.5L
- Dual ceramic ball bearing
- Billet aluminium compressor wheel.
- Ported shroud compressor housing cover.
- Speed sensor port included in compressor cover. (Sold separately AF8050-1010)
- Standard XR6 turbine outlet flange
- Turbo oil line feed sold separately
- Ford XR6 BA BF AF30-1000. Ford XR6 FG AF30-1005
- Recommended turbo drain adapter AF463-01 or AF463-05.
- Dual internal wastegate brackets included to suit both BA/BF & FG models
- Will suit standard coolant lines or M14 x1.5mm coolant fittings sold separately
- Turbine inlet gasket sold separately AF9557-0005

includes gasket & fitting



COMPRESSOR

Inducer	Exducer	Extended Tip	A/R
66mm	82mm	86mm	0.72

TURBINE

Inducer	Exducer	A/R
68mm	62.3mm	1.06

Compressor Inlet	Compressor Outlet	Turbine Inlet flange	Turbine Outlet flange	Wastegate
4" Slip fit	2.5" Slip fit	T3	XR6 5 bolt	36mm Internal wastegate with 9PSI actuator



BOOSTED 6762 1.15 XR6

Part No: AF8005-3018

Natural Cast

Part No: AF8005-3018BLK Hi Temp Black

• Recommended horsepower rating: 550-1000HP

• Recommended engine displacement: 2L to 5.5L

• Dual ceramic ball bearing

• Billet aluminium compressor wheel.

• Ported shroud compressor housing cover.

• Speed sensor port included in compressor cover.

(Sold separately AF8050-1010)

• Standard XR6 turbine outlet flange

• Turbo oil line feed sold separately

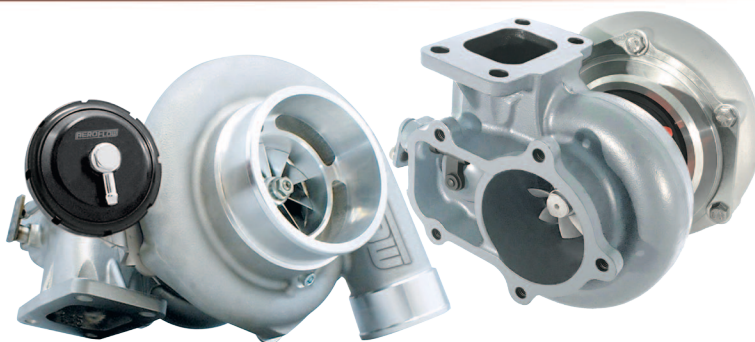
• Ford XR6 BA BF AF30-1000. Ford XR6 FG AF30-1005

• Recommended turbo drain adapter AF463-01 or AF463-05.

• Dual internal wastegate brackets included to suit both BA/BF & FG models

• Will suit standard coolant lines or M14 x1.5mm coolant fittings sold separately

• Turbine inlet gasket sold separately AF9557-0005



includes gasket & fitting

COMPRESSOR

TURBINE

Inducer	Exducer	Extended Tip	A/R
67mm	84mm	87.5mm	.72

Inducer	Exducer	A/R
68mm	62.3mm	1.15

Compressor Inlet	Compressor Outlet	Turbine Inlet flange	Turbine Outlet flange	Wastegate
4" Slip fit	2.5" Slip fit	T3	XR6 5 bolt	38mm Internal wastegate with 9 PSI actuator

BOOSTED 6662 .63

Part No: AF8005-3015

Natural Cast

Part No: AF8005-3015BLK Hi Temp Black

• Recommended horsepower rating: 450-850HP

• Recommended engine displacement: 2L to 4.5L

• Dual ceramic ball bearing

• Billet aluminium compressor wheel.

• Ported shroud compressor housing cover.

• Speed sensor port included in compressor cover.

(Sold separately AF8050-1010)

• External wastegate sold separately.

• Inlet flange single layer gasket, turbo drain gasket and -4AN turbo oil feed fitting with restrictor included in turbo kit.

• Turbine inlet gasket sold separately AF9557-0005

• Recommended turbo drain adapter AF463-01 or AF463-05.

• M14x1.5mm coolant fittings sold separately.

• V-band sold separately AF8080-1000



includes gasket & fitting

COMPRESSOR

TURBINE

Inducer	Exducer	Extended Tip	A/R
66mm	82mm	87.5mm	0.72

Inducer	Exducer	A/R
68mm	62.3mm	0.63

Compressor Inlet	Compressor Outlet	Turbine Inlet flange	Turbine Outlet flange	Wastegate
4" Slip fit	2.5" Slip fit	T3	V band (AF8080-1000)	External wastegate sold separately

BOOSTED 6662 .82

Part No: AF8005-3016

Natural Cast

Part No: AF8005-3016BLK Hi Temp Black

• Recommended horsepower rating: 450-850HP

• Recommended engine displacement: 2L to 4.5L

• Dual ceramic ball bearing

• Billet aluminium compressor wheel.

• Ported shroud compressor housing cover.

• Speed sensor port included in compressor cover.

(Sold separately AF8050-1010)

• External wastegate sold separately.

• Inlet flange single layer gasket, turbo drain gasket and -4AN turbo oil feed fitting with restrictor included in turbo kit.

• Turbine inlet gasket sold separately AF9557-0005

• Recommended turbo drain adapter AF463-01 or AF463-05.

• M14x1.5mm coolant fittings sold separately.

• V-band sold separately AF8080-1000



includes gasket & fitting

COMPRESSOR

TURBINE

Inducer	Exducer	Extended Tip	A/R
66mm	82mm	87.5mm	0.72

Inducer	Exducer	A/R
68mm	62.3mm	0.82

Compressor Inlet	Compressor Outlet	Turbine Inlet flange	Turbine Outlet flange	Wastegate
4" Slip fit	2.5" Slip fit	T3	V band (AF8080-1000)	External wastegate sold separately

BOOSTED 6662 1.06

Part No: AF8005-3017 Natural Cast

Part No: AF8005-3017BLK Hi Temp Black

- Recommended horsepower rating: 450-850HP
- Recommended engine displacement: 2L to 4.5L
- Dual ceramic ball bearing
- Billet aluminium compressor wheel.
- Ported shroud compressor housing cover.
- Speed sensor port included in compressor cover. (Sold separately AF8050-1010)
- External wastegate sold separately.
- Inlet flange single layer gasket, turbo drain gasket and -4AN turbo oil feed fitting with restrictor included in turbo kit.
- Turbine inlet gasket sold separately AF9557-0005
- Recommended turbo drain adapter AF463-01 or AF463-05.
- M14x1.5mm coolant fittings sold separately.
- V-band sold separately AF8080-1000



includes gasket & fitting

COMPRESSOR

Inducer	Exducer	Extended Tip	A/R
66mm	82mm	87.5mm	0.72

TURBINE

Inducer	Exducer	A/R
68mm	62.3mm	1.06

Compressor Inlet	Compressor Outlet	Turbine Inlet flange	Turbine Outlet flange	Wastegate
4" Slip fit	2.5" Slip fit	T3	V band (AF8080-1000)	External wastegate sold separately

BOOSTED 6662 .82

Part No: AF8005-3020 Natural Cast

Part No: AF8005-3020BLK Hi Temp Black

- Recommended horsepower rating: 450-785HP
- Recommended engine displacement: 2L to 4.5L
- Dual ceramic ball bearing
- Billet aluminium compressor wheel.
- Stainless steel exhaust housing
- Ported shroud compressor housing cover.
- Speed sensor port included in compressor cover. (Sold separately AF8050-1010)
- External wastegate sold separately.
- Inlet flange single layer gasket, turbo drain gasket and -4AN turbo oil feed fitting with restrictor included in turbo kit.
- Recommended turbo drain adapter AF463-01 or AF463-05.
- M14x1.5mm coolant fittings sold separately.
- Turbine inlet & outlet flange V-band sold separately (outlet AF8080-1000) (Inlet AF8080-1010)



COMPRESSOR

Inducer	Exducer	Extended Tip	A/R
66mm	82mm	87.5mm	0.72

TURBINE

Inducer	Exducer	A/R
68mm	62.3mm	0.82

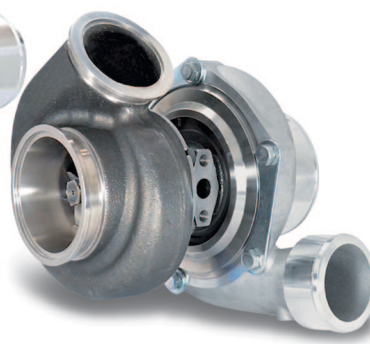
Compressor Inlet	Compressor Outlet	Turbine Inlet flange	Turbine Outlet flange	Wastegate
4" Slip fit	2.5" Slip fit	V band (AF8080-1010)	V band (AF8080-1000)	External wastegate sold separately

BOOSTED 6662 1.01

Part No: AF8005-3023 Natural Cast

Part No: AF8005-3023BLK Hi Temp Black

- Recommended horsepower rating: 450-850HP
- Recommended engine displacement: 2L to 4.5L
- Dual ceramic ball bearing
- Billet aluminium compressor wheel.
- Stainless steel exhaust housing
- Ported shroud compressor housing cover.
- Speed sensor port included in compressor cover. (Sold separately AF8050-1010)
- External wastegate sold separately.
- Inlet flange single layer gasket, turbo drain gasket and -4AN turbo oil feed fitting with restrictor included in turbo kit.
- Recommended turbo drain adapter AF463-01 or AF463-05.
- M14x1.5mm coolant fittings sold separately.
- Turbine inlet & outlet flange V-band sold separately (outlet AF8080-1000) (Inlet AF8080-1010)



COMPRESSOR

Inducer	Exducer	Extended Tip	A/R
66mm	82mm	87.5mm	0.72

TURBINE

Inducer	Exducer	A/R
68mm	62.3mm	1.01

Compressor Inlet	Compressor Outlet	Turbine Inlet flange	Turbine Outlet flange	Wastegate
4" Slip fit	2.5" Slip fit	V band (AF8080-1010)	V band (AF8080-1000)	External wastegate sold separately



BOOSTED 6662 .82 T4

Part No: AF8005-4000

Natural Cast

Part No: AF8005-4000BLK Hi Temp Black

- Recommended horsepower rating: 450-850HP
- Recommended engine displacement: 2L to 4.5L
- Dual ceramic ball bearing
- Billet aluminium compressor wheel.
- Ported shroud compressor housing cover.
- Speed sensor port included in compressor cover. (Sold separately AF8050-1010)
- External wastegate sold separately.
- Inlet flange single layer gasket, turbo drain gasket and -4AN turbo oil feed fitting with restrictor included in turbo kit.
- Turbine inlet gasket sold separately AF9557-0006
- Recommended turbo drain adapter AF463-01 or AF463-05.
- M14x1.5mm coolant fittings sold separately.
- Turbine outlet flange V-band sold separately AF8080-1000



includes gasket & fitting

COMPRESSOR

Inducer	Exducer	Extended Tip	A/R
66mm	82mm	87.5mm	0.72

TURBINE

Inducer	Exducer	A/R
68mm	62.3mm	0.82

Compressor Inlet	Compressor Outlet	Turbine Inlet flange	Turbine Outlet flange	Wastegate
4" Slip fit	2.5" Slip fit	T4	V band (AF8080-1000)	External wastegate sold separately

BOOSTED 6762 .83

Part No: AF8005-3025

Natural Cast

Part No: AF8005-3025BLK Hi Temp Black

- Recommended horsepower rating: 550 - 1000HP
- Recommended engine displacement: 2L to 5.5L
- Dual ceramic ball bearing
- Billet aluminium compressor wheel.
- Ported shroud compressor housing cover.
- Speed sensor port included in compressor cover. (Sold separately AF8050-1010)
- Recommended turbo drain adapter AF463-01 or AF463-05.
- M14x1.5mm coolant fittings sold separately.
- External wastegate sold separately
- Turbine inlet & outlet flange V-band sold separately (outlet AF8080-1000) (inlet AF8080-1010)



COMPRESSOR

Inducer	Exducer	Extended Tip	A/R
67mm	84mm	87.5mm	.72

TURBINE

Inducer	Exducer	A/R
68mm	62.3mm	0.83

Compressor Inlet	Compressor Outlet	Turbine Inlet flange	Turbine Outlet flange	Wastegate
4" Slip fit	2.5" Slip fit	V-band (AF8080-1010)	V-band (AF8080-1000)	External wastegate sold separately

BOOSTED 6762 .83 T4

Part No: AF8005-4022

Natural Cast

Part No: AF8005-4022BLK Hi Temp Black

- Recommended horsepower rating: 550 - 1000HP
- Recommended engine displacement: 2L to 5.5L
- Dual ceramic ball bearing
- Billet aluminium compressor wheel.
- Ported shroud compressor housing cover.
- Speed sensor port included in compressor cover. (Sold separately AF8050-1010)
- Recommended turbo drain adapter AF463-01 or AF463-05.
- M14x1.5mm coolant fittings sold separately.
- External wastegate sold separately
- Turbine outlet flange V-band sold separately (outlet AF8080-1000)
- Turbine inlet gasket sold separately (AF9557-0006)



COMPRESSOR

Inducer	Exducer	Extended Tip	A/R
67mm	84mm	87.5mm	.72

TURBINE

Inducer	Exducer	A/R
68mm	62.3mm	0.83

Compressor Inlet	Compressor Outlet	Turbine Inlet flange	Turbine Outlet flange	Wastegate
4" Slip fit	2.5" Slip fit	T4	V-band (AF8080-1000)	External wastegate sold separately

BOOSTED 6762 .83

Part No: AF8005-3021

Natural Cast

Part No: AF8005-3021BLK

Hi Temp Black

- Recommended horsepower rating: 550 - 1000HP
- Recommended engine displacement: 2L to 5.5L
- Dual ceramic ball bearing
- Billet aluminium compressor wheel.
- Ported shroud compressor housing cover.
- Speed sensor port included in compressor cover.
(Sold separately AF8050-1010)
- Recommended turbo drain adapter AF463-01 or AF463-05.
- M14x1.5mm coolant fittings sold separately.
- External wastegate sold separately
- Turbine outlet flange V-band sold separately
(outlet AF8080-1000)
- Turbine inlet gasket sold separately (AF9557-0005)



COMPRESSOR

Inducer	Exducer	Extended Tip	A/R
67mm	84mm	87.5mm	.72

TURBINE

Inducer	Exducer	A/R
68mm	62.3mm	0.83

Compressor Inlet	Compressor Outlet	Turbine Inlet flange	Turbine Outlet flange	Wastegate
4" Slip fit	2.5" Slip fit	T3	V-band (AF8080-1000)	External wastegate sold separately

BOOSTED 6762 1.01

Part No: AF8005-3026

Natural Cast

Part No: AF8005-3026BLK

Hi Temp Black

- Recommended horsepower rating: 550 - 1000HP
- Recommended engine displacement: 2L to 5.5L
- Dual ceramic ball bearing
- Billet aluminium compressor wheel.
- Ported shroud compressor housing cover.
- Speed sensor port included in compressor cover.
(Sold separately AF8050-1010)
- Recommended turbo drain adapter AF463-01 or AF463-05.
- M14x1.5mm coolant fittings sold separately.
- External wastegate sold separately
- Turbine inlet & outlet flange V-band sold separately
(outlet AF8080-1000) (inlet AF8080-1010)



COMPRESSOR

Inducer	Exducer	Extended Tip	A/R
67mm	84mm	87.5mm	.72

TURBINE

Inducer	Exducer	A/R
68mm	62.3mm	1.01

Compressor Inlet	Compressor Outlet	Turbine Inlet flange	Turbine Outlet flange	Wastegate
4" Slip fit	2.5" Slip fit	V-band (AF8080-1010)	V-band (AF8080-1000)	External wastegate sold separately

BOOSTED 6762 1.21

Part No: AF8005-3027

Natural Cast

Part No: AF8005-3027BLK

Hi Temp Black

- Recommended horsepower rating: 550 - 1100HP
- Recommended engine displacement: 2L to 5.5L
- Dual ceramic ball bearing
- Billet aluminium compressor wheel.
- Ported shroud compressor housing cover.
- Speed sensor port included in compressor cover.
(Sold separately AF8050-1010)
- Recommended turbo drain adapter AF463-01 or AF463-05.
- M14x1.5mm coolant fittings sold separately.
- External wastegate sold separately
- Turbine inlet & outlet flange V-band sold separately
(outlet AF8080-1000) (inlet AF8080-1010)



COMPRESSOR

Inducer	Exducer	Extended Tip	A/R
67mm	84mm	87.5mm	.72

TURBINE

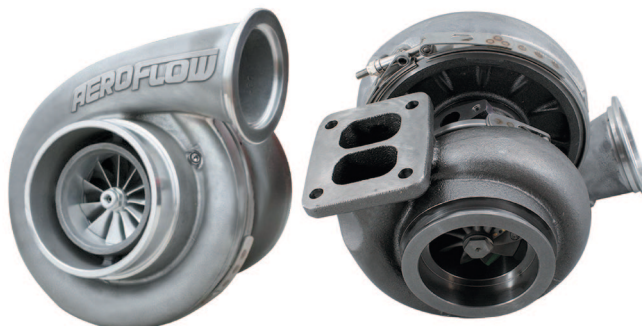
Inducer	Exducer	A/R
68mm	62.3mm	1.21

Compressor Inlet	Compressor Outlet	Turbine Inlet flange	Turbine Outlet flange	Wastegate
4" Slip fit	2.5" Slip fit	V-band (AF8080-1010)	V-band (AF8080-1000)	External wastegate sold separately



BOOSTED 7075 1.15

- Part No: AF8005-4004 Natural Cast
Part No: AF8005-4004BLK Hi Temp Black
- Recommended horsepower rating: 475 - 950HP
 - Recommended engine displacement: 2L to 7L
 - Dual ceramic ball bearing
 - Billet aluminium compressor wheel.
 - Ported shroud compressor housing cover.
 - Speed sensor port included in compressor cover.
(Sold separately AF8050-1010)
 - Recommended turbo drain adapter AF463-02 or AF463-06.
 - M18x1.5mm coolant fittings sold separately.
 - External wastegate sold separately
 - Turbine inlet gasket sold separately AF9557-0003
 - Turbine & Compressor outlet flange V-band sold separately
 - Turbo oil feed plate sold separately AF463-01



includes gasket only

COMPRESSOR

Inducer	Exducer	Extended Tip	A/R
70mm	94mm	98mm	.60

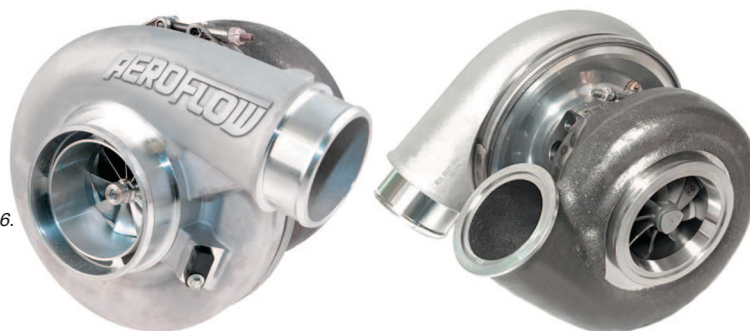
TURBINE

Inducer	Exducer	A/R
82mm	75mm	1.15

Compressor Inlet	Compressor Outlet	Turbine Inlet flange	Turbine Outlet flange	Wastegate
5" Slip fit	V-band (AF8080-1009)	T4 Twin Entry	V-band (AF8080-1001)	External wastegate sold separately

BOOSTED 7375 1.01

- Part No: AF8005-4006 Natural Cast
Part No: AF8005-4006BLK Hi Temp Black
- Recommended horsepower rating: 475 - 1200HP
 - Recommended engine displacement: 2L to 7L
 - Dual ceramic ball bearing
 - Billet aluminium compressor wheel.
 - Ported shroud compressor housing cover.
 - Speed sensor port included in compressor cover.
(Sold separately AF8050-1010)
 - Recommended turbo drain adapter AF463-02 or AF463-06.
 - M14x1.5mm coolant fittings sold separately.
 - External wastegate sold separately
 - Turbine inlet & outlet flange V-band sold separately
 - Turbo oil feed plate sold separately AF463-01



COMPRESSOR

Inducer	Exducer	Extended Tip	A/R
73mm	91mm	96mm	.90

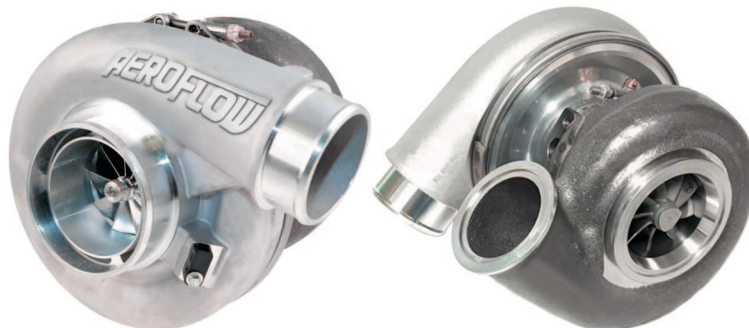
TURBINE

Inducer	Exducer	A/R
82mm	75mm	1.01

Compressor Inlet	Compressor Outlet	Turbine Inlet flange	Turbine Outlet flange	Wastegate
5" Slip fit	3" Slip fit			External wastegate sold separately

BOOSTED 7375 1.15

- Part No: AF8005-4008 Natural Cast
Part No: AF8005-4008BLK Hi Temp Black
- Recommended horsepower rating: 475 - 1200HP
 - Recommended engine displacement: 2L to 7L
 - Dual ceramic ball bearing
 - Billet aluminium compressor wheel.
 - Ported shroud compressor housing cover.
 - Speed sensor port included in compressor cover.
(Sold separately AF8050-1010)
 - Recommended turbo drain adapter AF463-02 or AF463-06.
 - M14x1.5mm coolant fittings sold separately.
 - External wastegate sold separately
 - Turbine inlet & outlet flange V-band sold separately
 - Turbo oil feed plate sold separately AF463-01



COMPRESSOR

Inducer	Exducer	Extended Tip	A/R
73mm	91mm	96mm	.90

TURBINE

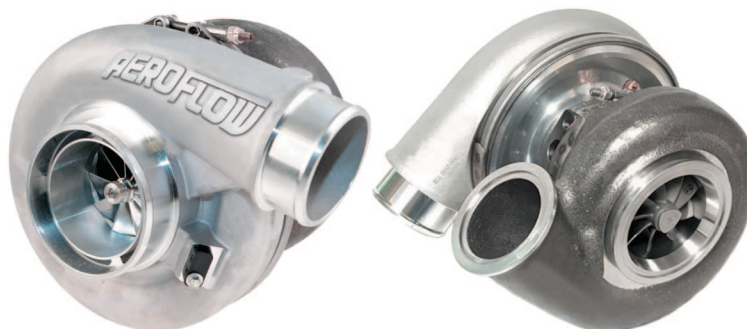
Inducer	Exducer	A/R
82mm	75mm	1.15

Compressor Inlet	Compressor Outlet	Turbine Inlet flange	Turbine Outlet flange	Wastegate
5" Slip fit	3" Slip fit			External wastegate sold separately

BOOSTED 7375 1.28

Part No: AF8005-4009 Natural Cast
 Part No: AF8005-4009BLK Hi Temp Black

- Recommended horsepower rating: 475 - 1200HP
- Recommended engine displacement: 2L to 7L
- Dual ceramic ball bearing
- Billet aluminium compressor wheel.
- Ported shroud compressor housing cover.
- Speed sensor port included in compressor cover.
 (Sold separately AF8050-1010)
- Recommended turbo drain adapter AF463-02 or AF463-06.
- M14x1.5mm coolant fittings sold separately.
- External wastegate sold separately
- Turbine inlet & outlet flange V-band sold separately
- Turbo oil feed plate sold separately AF463-01



COMPRESSOR

Inducer	Exducer	Extended Tip	A/R
73mm	91mm	96mm	.90

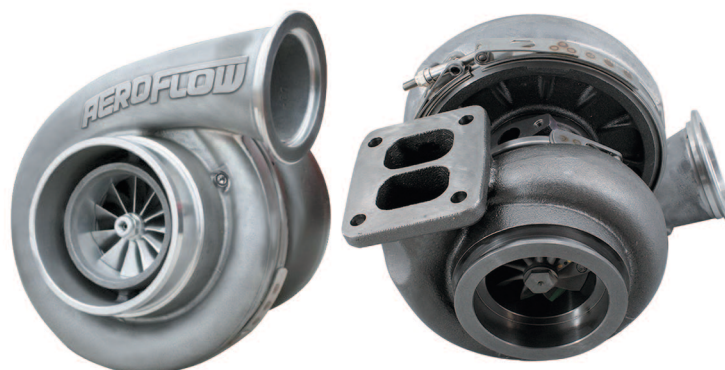
TURBINE

Inducer	Exducer	A/R
82mm	75mm	1.28

Compressor Inlet	Compressor Outlet	Turbine Inlet flange	Turbine Outlet flange	Wastegate
5" Slip fit	3" Slip fit			External wastegate

BOOSTED 7675 1.15

- Part No: AF8005-4005 Natural Cast
 Part No: AF8005-4005BLK Hi Temp Black
- Recommended horsepower rating: 475 - 1450HP
 - Recommended engine displacement: 2L to 8L
 - Dual ceramic ball bearing
 - Billet aluminium compressor wheel.
 - Ported shroud compressor housing cover.
 - Speed sensor port included in compressor cover.
 (Sold separately AF8050-1010)
 - Recommended turbo drain adapter AF463-02 or AF463-06.
 - M18x1.5mm coolant fittings sold separately.
 - External wastegate sold separately
 - Turbine inlet gasket sold separately AF9557-0003
 - Turbine & Compressor outlet flange V-band sold separately
 - Turbo oil feed plate sold separately AF463-01



COMPRESSOR

Inducer	Exducer	Extended Tip	A/R
76mm	102mm	107mm	.60

TURBINE

Inducer	Exducer	A/R
82mm	75mm	1.15

Compressor Inlet	Compressor Outlet	Turbine Inlet flange	Turbine Outlet flange	Wastegate
5" Slip fit	4" V band (AF8080-1009)	T4 Twin Entry	4" V band (AF8080-1001)	External wastegate sold separately

BOOSTED 8077 1.15

- Part No: AF8005-4007 Natural Cast
 Part No: AF8005-4007BLK Hi Temp Black
- Recommended horsepower rating: 700 - 1250HP
 - Recommended engine displacement: 2L to 8L
 - Dual ceramic ball bearing
 - Billet aluminium compressor wheel.
 - Ported shroud compressor housing cover.
 - Speed sensor port included in compressor cover.
 (Sold separately AF8050-1010)
 - Recommended turbo drain adapter AF463-02 or AF463-06.
 - M18 x1.5mm coolant fittings sold separately.
 - External wastegate sold separately
 - Turbine inlet gasket sold separately AF9557-0003
 - All V-bands sold separately
 - Turbo oil feed plate sold separately AF463-01



COMPRESSOR

Inducer	Exducer	Extended Tip	A/R
79.8mm	108.4mm	113mm	.60

TURBINE

Inducer	Exducer	A/R
88.9mm	77.4mm	1.15

Compressor Inlet	Compressor Outlet	Turbine Inlet flange	Turbine Outlet flange	Wastegate
5" Slip fit	V- band (AF8080-1009)	T4 Twin Entry	V- band (AF8080-1001)	External wastegate sold separately



BOOSTED 8077 1.26

- Part No: AF8005-6000 Natural Cast
Part No: AF8005-6000BLK Hi Temp Black
- Recommended horsepower rating: 700 - 1250HP
 - Recommended engine displacement: 2L to 8L
 - Dual ceramic ball bearing
 - Billet aluminium compressor wheel.
 - Ported shroud compressor housing cover.
 - Speed sensor port included in compressor cover. (Sold separately AF8050-1010)
 - Recommended turbo drain adapter AF463-02 or AF463-06.
 - M18 x1.5mm coolant fittings sold separately.
 - External wastegate sold separately
 - Turbine inlet gasket sold separately AF9557-0004
 - All V-bands sold separately
 - Turbo oil feed plate sold separately AF463-01
 - Turbine inlet gasket sold separately AF9557-0007



includes gasket only

COMPRESSOR

Inducer	Exducer	Extended Tip	A/R
79.8mm	108.4mm	113mm	.60

TURBINE

Inducer	Exducer	A/R
88.9mm	77.4mm	1.26

Compressor Inlet	Compressor Outlet	Turbine Inlet flange	Turbine Outlet flange	Wastegate
5" Slip fit	V- band (AF8080-1009)	T6 Twin Entry	V- band (AF8080-1002)	External wastegate sold separately

BOOSTED 7975 1.01

- Part No: AF8005-4010 Natural Cast
Part No: AF8005-4010BLK Hi Temp Black
- Recommended horsepower rating: 475 - 1450HP
 - Recommended engine displacement: 2L to 8L
 - Dual ceramic ball bearing
 - Billet aluminium compressor wheel.
 - Ported shroud compressor housing cover.
 - Speed sensor port included in compressor cover. (Sold separately AF8050-1010)
 - Recommended turbo drain adapter AF463-02 or AF463-06.
 - M14x1.5mm coolant fittings sold separately.
 - External wastegate sold separately
 - Turbine inlet & outlet flange V-band sold separately
 - Turbo oil feed plate sold separately AF463-01



COMPRESSOR

Inducer	Exducer	Extended Tip	A/R
79mm	98mm	103mm	.85

TURBINE

Inducer	Exducer	A/R
82mm	75mm	1.01

Compressor Inlet	Compressor Outlet	Turbine Inlet flange	Turbine Outlet flange	Wastegate
5" Slip fit	V-band AF8080-1009			External wastegate sold separately

BOOSTED 7975 1.15

- Part No: AF8005-4011 Natural Cast
Part No: AF8005-4011BLK Hi Temp Black
- Recommended horsepower rating: 475 - 1450HP
 - Recommended engine displacement: 2L to 8L
 - Dual ceramic ball bearing
 - Billet aluminium compressor wheel.
 - Ported shroud compressor housing cover.
 - Speed sensor port included in compressor cover. (Sold separately AF8050-1010)
 - Recommended turbo drain adapter AF463-02 or AF463-06.
 - M14x1.5mm coolant fittings sold separately.
 - External wastegate sold separately
 - Turbine inlet & outlet flange V-band sold separately
 - Turbo oil feed plate sold separately AF463-01



COMPRESSOR

Inducer	Exducer	Extended Tip	A/R
79mm	98mm	103mm	.85

TURBINE

Inducer	Exducer	A/R
82mm	75mm	1.15

Compressor Inlet	Compressor Outlet	Turbine Inlet flange	Turbine Outlet flange	Wastegate
5" Slip fit	V-band (AF8080-1009)			External wastegate sold separately

BOOSTED 7975 1.28

- Part No: AF8005-4012** **Natural Cast**
Part No: AF8005-4012BLK **Hi Temp Black**
- Recommended horsepower rating: 475 - 1450HP
 - Recommended engine displacement: 2L to 8L
 - Dual ceramic ball bearing
 - Billet aluminium compressor wheel.
 - Ported shroud compressor housing cover.
 - Speed sensor port included in compressor cover. (Sold separately AF8050-1010)
 - Recommended turbo drain adapter AF463-02 or AF463-06.
 - M14x1.5mm coolant fittings sold separately.
 - External wastegate sold separately
 - Turbine inlet & outlet flange V-band sold separately
 - Turbo oil feed plate sold separately AF463-01



COMPRESSOR

Inducer	Exducer	Extended Tip	A/R
79mm	98mm	103mm	.85

TURBINE

Inducer	Exducer	A/R
82mm	75mm	1.28

Compressor Inlet	Compressor Outlet	Turbine Inlet flange	Turbine Outlet flange	Wastegate
5" Slip fit	V- band (AF8080-1009)			External wastegate sold separately

BOOSTED 94103 1.24

- Part No: AF8005-6005** **Natural Cast**
Part No: AF8005-6005BLK **Hi Temp Black**
- Recommended horsepower rating: 1000-2500HP
 - Recommended engine displacement: 3L to 12L
 - Triple ceramic ball bearing
 - Billet CNC core
 - Billet aluminium point milled compressor wheel.
 - Ported shroud compressor housing cover.
 - Speed sensor port included in compressor cover. (Sold separately AF8050-1010)
 - Recommended turbo drain adapter AF463-02 or AF463-06.
 - M18x1.5mm coolant fittings sold separately.
 - External wastegate sold separately
 - All V-bands sold separately
 - Turbine inlet gasket sold separately AF9557-0007



COMPRESSOR

Inducer	Exducer	Extended Tip	A/R
94mm	133.8mm	138.4mm	.88

TURBINE

Inducer	Exducer	A/R
112mm	103mm	1.24

Compressor Inlet	Compressor Outlet	Turbine Inlet flange	Turbine Outlet flange	Wastegate
6" Slip fit	V- band (AF8080-1007)	T6 Twin Entry	V- band (AF8080-1008)	External wastegate sold separately

BOOSTED 6766 .96

- Part No: AF8006-4005** **Natural Cast**
Part No: AF8006-4005BLK **Hi Temp Black**
- Recommended horsepower rating: 460-850HP
 - Recommended engine displacement: 2L to 6L
 - This is a 360° journal bearing turbo.
 - This is an oil cooled turbocharger.
 - Billet aluminium point milled compressor wheel.
 - Ported shroud compressor housing cover.
 - Speed sensor port included in compressor cover. (Sold separately AF8050-1010)
 - External wastegate sold separately.
 - 1/8NPT turbo oil feed fitting or AF463-01 oil feed plate.
 - Recommended turbo drain adapter AF463-02 or AF463-06.
 - Turbine outlet flange V-band sold separately AF8080-1003
 - .81 V-band rear housing optional AF8050-1003
 - Turbine inlet gasket sold separately AF9557-0006



COMPRESSOR

Inducer	Exducer	Extended Tip	A/R
67.4mm	82mm	88.3mm	

TURBINE

Inducer	Exducer	A/R
74mm	66.1mm	0.96

Compressor Inlet	Compressor Outlet	Turbine Inlet flange	Turbine Outlet flange	Wastegate
4" Slip fit	2.5" Slip fit	T4	V band (AF8080-1003)	External wastegate sold separately



BOOSTED 7875 .96

- Part No: AF8006-4010** **Natural Cast**
Part No: AF8006-4010BLK **Hi Temp Black**
 • **Recommended horsepower rating: 475-950HP**
 • **Recommended engine displacement: 2L to 6L**
 • This is a 360° journal bearing turbo.
 • This is an oil cooled turbocharger.
 • Billet aluminium point milled compressor wheel.
 • Ported shroud compressor housing cover.
 • Speed sensor port included in compressor cover.
 (Sold separately AF8050-1010)
 • External wastegate sold separately.
 • 1/8NPT turbo oil feed fitting or AF463-01 oil feed plate.
 • Recommended turbo drain adapter AF463-02 or AF463-06.
 • Turbine outlet flange V-band sold separately AF8080-1003
 • Turbine inlet gasket sold separately AF9557-0006



COMPRESSOR

Inducer	Exducer	Extended Tip	A/R
78.13mm	102.4mm	106.3mm	

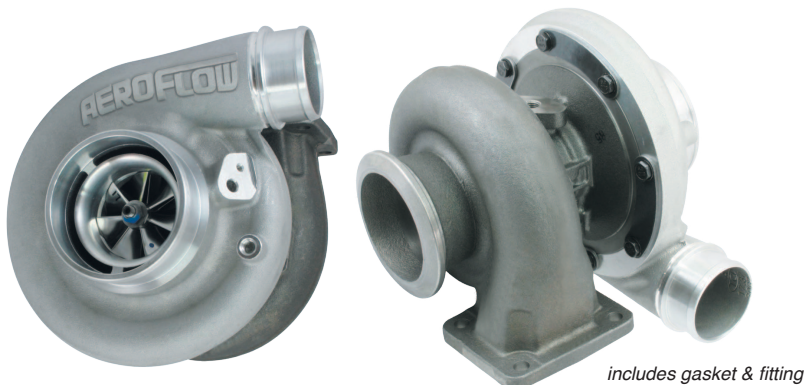
TURBINE

Inducer	Exducer	A/R
82mm	75mm	0.96

Compressor Inlet	Compressor Outlet	Turbine Inlet flange	Turbine Outlet flange	Wastegate
4" Slip fit	2.5" Slip fit	T4	V band (AF8080-1003)	External wastegate sold separately

BOOSTED 6673 .91

- Part No: AF8006-4015** **Natural Cast**
Part No: AF8006-4015BLK **Hi Temp Black**
 • **Recommended horsepower rating: 460-850HP**
 • **Recommended engine displacement: 2L to 6L**
 • This is a 360° journal bearing turbo
 • This is an oil cooled turbo charger
 • Billet aluminium 7 + 7 compressor wheel.
 • Ported shroud compressor housing cover.
 • Speed sensor port included in compressor cover.
 (Sold separately AF8050-1010)
 • External wastegate sold separately.
 • 1/4NPT turbo oil feed fitting.
 • Recommended turbo drain adapter AF463-02 or AF463-06.
 • Turbine outlet flange V-band sold separately AF8080-1006
 • Turbine inlet flange gasket sold separately AF9557-0003



COMPRESSOR

Inducer	Exducer	Extended Tip	A/R
66.1mm	92.7mm	96.24mm	

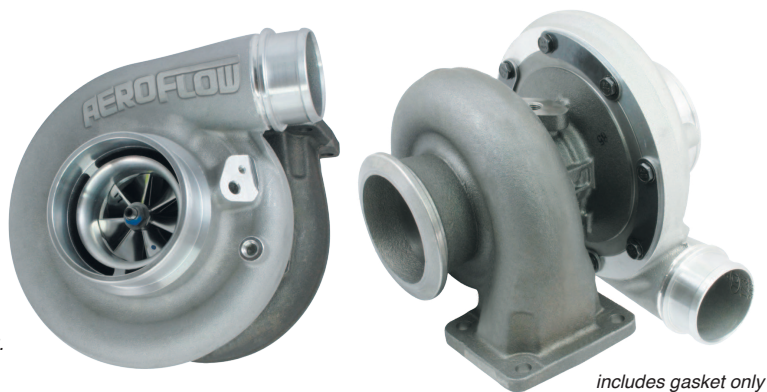
TURBINE

Inducer	Exducer	A/R
79.7mm	73.5mm	0.91

Compressor Inlet	Compressor Outlet	Turbine Inlet flange	Turbine Outlet flange	Wastegate
4" Slip fit	2.5" Slip fit	T4 Twin Entry	V band (AF8080-1004)	External wastegate sold separately

BOOSTED 6973 .91

- Part No: AF8006-4016** **Natural Cast**
Part No: AF8006-4016BLK **Hi Temp Black**
 • **Recommended horsepower rating: 500-950HP**
 • **Recommended engine displacement: 2L to 6L**
 • This is a 360° journal bearing turbo
 • This is an oil cooled turbo charger
 • Billet aluminium 7 + 7 compressor wheel.
 • Ported shroud compressor housing cover.
 • Speed sensor port included in compressor cover.
 (Sold separately AF8050-1010)
 • External wastegate sold separately.
 • 1/4NPT turbo oil feed fitting.
 • Recommended turbo drain adapter AF463-02 or AF463-06.
 • Turbine outlet flange V-band sold separately AF8080-1006
 • Turbine inlet flange gasket sold separately AF9557-0003



COMPRESSOR

Inducer	Exducer	Extended Tip	A/R
69mm	92.5mm	96.4mm	

TURBINE

Inducer	Exducer	A/R
79.7mm	73.5mm	0.91

Compressor Inlet	Compressor Outlet	Turbine Inlet flange	Turbine Outlet flange	Wastegate
4" Slip fit	2.5" Slip fit	T4 Twin Entry	V band (AF8080-1004)	External wastegate sold separately

BOOSTED 7575 1.10

Part No: AF8006-4017

Natural Cast

Part No: AF8006-4017BLK

Hi Temp Black

- Recommended horsepower rating: 500-1050HP
- Recommended engine displacement: 2.5L to 7L
- This is a 360° journal bearing turbo
- This is an oil cooled turbo charger
- Billet aluminium 7 + 7 compressor wheel.
- Ported shroud compressor housing cover.
- Speed sensor port included in compressor cover. (Sold separately AF8050-1010)
- External wastegate sold separately.
- 1/4NPT turbo oil feed fitting.
- Recommended turbo drain adapter AF463-02 or AF463-06.
- All V-band sold separately
- Turbine inlet flange gasket sold separately AF9557-0003



includes gasket only

COMPRESSOR

Inducer	Exducer	Extended Tip	A/R
75mm	100.32mm	105.9mm	

TURBINE

Inducer	Exducer	A/R
83.65mm	75mm	1.10

Compressor Inlet	Compressor Outlet	Turbine Inlet flange	Turbine Outlet flange	Wastegate
5" Slip fit	V band (AF8080-1006)	T4 Twin Entry	V band (AF8080-1004)	External wastegate sold separately

BOOSTED 8075 1.10

Part No: AF8006-4018

Natural Cast

Part No: AF8006-4018BLK

Hi Temp Black

- Recommended horsepower rating: 750-1250HP
- Recommended engine displacement: 2.5L to 7L
- This is a 360° journal bearing turbo
- This is an oil cooled turbo charger
- Billet aluminium 7 + 7 compressor wheel.
- Ported shroud compressor housing cover.
- Speed sensor port included in compressor cover. (Sold separately AF8050-1010)
- External wastegate sold separately.
- 1/4NPT turbo oil feed fitting.
- Recommended turbo drain adapter AF463-02 or AF463-06.
- V-band sold separately
- Turbine inlet flange gasket sold separately AF9557-0003



includes gasket only

COMPRESSOR

Inducer	Exducer	Extended Tip	A/R
80.3mm	113mm	117.36mm	

TURBINE

Inducer	Exducer	A/R
83.65mm	75mm	1.10

Compressor Inlet	Compressor Outlet	Turbine Inlet flange	Turbine Outlet flange	Wastegate
5" Slip fit	V band (AF8080-1006)	T4 Twin Entry	V band (AF8080-1001)	External wastegate sold separately

BOOSTED 7588 1.32

Part No: AF8006-6000

Natural Cast

Part No: AF8006-6000BLK

Hi Temp Black

- Recommended horsepower rating: 1150-1500HP
- Recommended engine displacement: 3L to 7L
- This is a 360° journal bearing turbo
- This is an oil cooled turbo charger
- Billet aluminium 7 + 7 compressor wheel.
- Ported shroud compressor housing cover.
- Speed sensor port included in compressor cover. (Sold separately AF8050-1010)
- External wastegate sold separately.
- 1/4NPT turbo oil feed fitting.
- Recommended turbo drain adapter AF463-02 or AF463-06.
- V-band sold separately
- Turbine inlet flange gasket sold separately AF9557-0007
- Optional 1.31 V-band rear housing sold separately AF8050-1002



includes gasket only

COMPRESSOR

Inducer	Exducer	Extended Tip	A/R
75mm	100.32mm	105.9mm	

TURBINE

Inducer	Exducer	A/R
95.71mm	88mm	1.32

Compressor Inlet	Compressor Outlet	Turbine Inlet flange	Turbine Outlet flange	Wastegate
5" Slip fit	V band (AF8080-1006)	T6 Twin Entry	V band (AF8080-1005)	External wastegate sold separately



BOOSTED 8888 1.32

Part No: AF8006-6001

Natural Cast

Part No: AF8006-6001BLK

Hi Temp Black

- Recommended horsepower rating: 1200-1600HP

- Recommended engine displacement: 3L to 7L

- This is a 360° journal bearing turbo

- This is an oil cooled turbo charger

- Billet aluminium 7 + 7 compressor wheel.

- Ported shroud compressor housing cover.

- Speed sensor port included in compressor cover.

- (Sold separately AF8050-1010)

- External wastegate sold separately.

- 1/4NPT turbo oil feed fitting.

- Recommended turbo drain adapter AF463-02 or AF463-06.

- V-band sold separately

- Turbine inlet flange gasket sold separately AF9557-0007

- Optional 1.31 V-band rear housing sold separately AF8050-1002



includes gasket only

COMPRESSOR

Inducer	Exducer	Extended Tip	A/R
88mm	117.36mm	124.4mm	

TURBINE

Inducer	Exducer	A/R
95.71mm	88mm	1.32

Compressor Inlet	Compressor Outlet	Turbine Inlet flange	Turbine Outlet flange	Wastegate
5" Slip fit	V band (AF8080-1006)	T6 Twin Entry	V band (AF8080-1005)	External wastegate sold separately

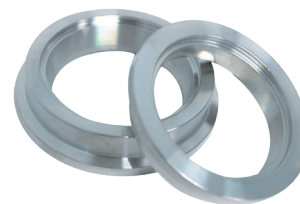
TURBO SPECIFIC V-BAND CLAMPS

These V-band clamps are designed especially for use with Boosted turbochargers. They are made in 304 stainless steel.

Not: Moly grease all threads before installation and removal.



Part No	ID	OD	Description
AF8080-1000	76.2mm (3")	90.2mm (3-1/2")	304 S/S turbine outlet flange V-band kit
AF8080-1001	91.4mm (3-19/32")	117.3mm (4-39/64")	304 S/S turbine outlet flange V-band kit
AF8080-1002	78.2mm (3-5/64")	120.7mm (4-3/4")	304 S/S turbine outlet flange V-band kit
AF8080-1003	82.4mm (3-1/4")	92.1mm (3-5/8")	304 S/S turbine outlet flange V-band kit
AF8080-1004	82.2mm (3-15/64")	107mm (4-7/32")	304 S/S turbine outlet flange V-band kit
AF8080-1005	108.5mm (4-9/32")	146mm (5-7/64")	304 S/S turbine outlet flange V-band kit
AF8080-1006	82.2mm (3-15/64")	107mm (4-7/32")	Aluminium compressor outlet flange V-band kit
AF8080-1007	101.6mm (4")	107mm (4-7/32")	Aluminium compressor outlet flange V-band kit
AF8080-1008	115mm (4-33/64")	131mm (5-5/32")	304 S/S turbine outlet flange V-band kit
AF8080-1009	69.85mm (2-3/4")	92.1mm (3-5/8")	304 S/S turbine inlet flange V-band kit
AF8080-1010	58mm (2-9/32")	76mm (3")	304 S/S turbine inlet flange V-band kit



V-BAND EXHAUST HOUSINGS

Part No	AR	Material	Description
AF8050-1003	.81	Cast Iron	Suits AF8006-4005
AF8050-1000	.82	304 Stainless Steel	GT35 exhaust housing
AF8050-1001	1.01	Cast Iron	GT35 exhaust housing
AF8050-1002	1.31	Cast Iron	Suits S400



TURBO FITTINGS

Part No	Description
OIL FEED	
AF341-03	Male inverted flare 7/16" - 24 SAE
AF341-04	Male inverted flare 7/16" - 24 SAE short
AF380-03	1/8"NPT to -3AN
AF380-04	1/8"NPT to -4AN
AF380-04-03	1/4NPT to -3AN
AF380-04-04	1/4NPT to -4AN

WATER INLET-OUTLET

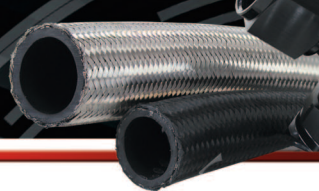
AF732-06	Male -6 to M14 X 1.5 Blue
AF732-06BLK	Male -6 to M14 X 1.5 Black
AF732-06S	Male -6 to M14 X 1.5 Silver
AF732-08	Male -8 to M14 X 1.5 Blue
AF732-08BLK	Male -8 to M14 X 1.5 Black
AF732-08S	Male -8 to M14 X 1.5 Silver



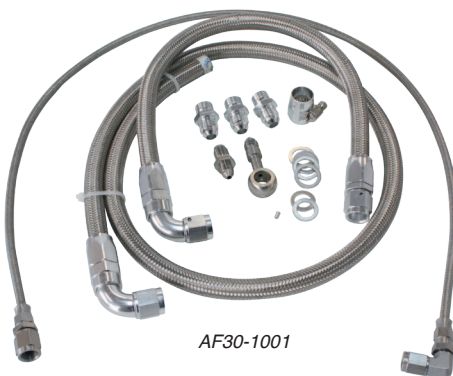
TURBO BREAK IN LUBRICANT

- Reduces start-up friction.
- Prevents bearing wear.
- Mandatory for any turbo installation.

Part No	Description
AF8080-2000	Turbo break in lubricant



AF30-1005



AF30-1001



AF30-1004



AF30-1002



AF30-1003

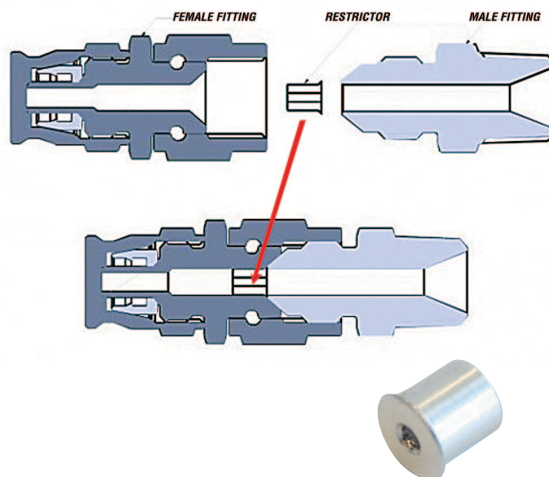
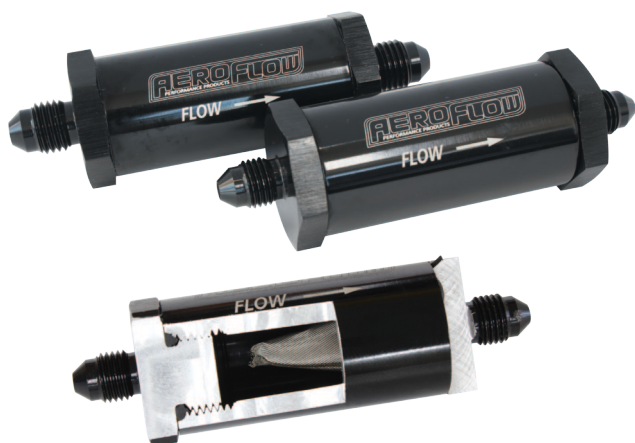


AF30-1000

TURBO OIL / WATER FEED LINE KITS

Includes -3AN 200 series stainless steel teflon oil feed lines

Part No	Description - To Suit
AF30-1000	Ford XR6 BA-BF includes 40 micron filter (Turbo feed line only)
AF30-1005	Ford XR6 FG Turbo feed line kit with 40 micron filter F6 requires AF359-04 (M12x1.5 to -4AN)
AF30-1001	Nissan SR20 S13
AF30-1002	Nissan SR20 S14 / S15
AF30-1003	Nissan RB20, RB25, RB26, RB30. (Note RB20 & RB30 require additional oil feed banjo)
AF30-1004	Universal line kit (Turbo feed line only) Comes with M12 x 1.25, M12 x 1.5, 7/16"-24



INLINE FUEL AND OIL FILTERS

This CNC machined filter features a large surface area cone design stainless steel 30 micron element that can be easily cleaned to maintain an efficient fuel or oil system. 76mm (3") length body 25.4mm (1") O.D.

AN	Blue	Black	Silver
-3	AF607-03	AF607-03BLK	AF607-03S
-4	AF607-04	AF607-04BLK	AF607-04S

1mm (3/64") RESTRICTOR

Ideal for use with bearing turbos. These great little restrictors restrict the oil flow/pressure to the core of the turbo to ensure long life of your seals. They suit Aeroflow's -3AN and -4AN 200 series fittings.

Part No	Description
AF399-03	Suits -3AN teflon hose 10 Pack
AF399-04	Suits -4AN teflon hose 10 Pack

COMPRESSOR WHEEL SPEED SENSOR



Part No	Description
AF8050-1010	Suits all Boosted turbos with speed sensor port.



STANDARD DUTY
High temp silica material rated to 1370°C/2500°F internal & 600°C/1100°F external



EXTREME DUTY
High temp titanium material rated to 1370°C/2500°F internal & 1370°C/2500°F external

TURBO BAG / BLANKET

Aeroflow's turbo blanket is designed to reduce turbo lag and control under hood temperatures.

Part No	Description - To Suit
---------	-----------------------

STANDARD DUTY

AF91-1006	Suit GT25 / GT28 Internal gate
AF91-1000	Suit XR6 / GT30 / GT35 Internal gate
AF91-1001	Suit WRX VF Internal gate
AF91-1002	Suit GT30-35/GT40 External gate
AF91-1004	Suit T04 & GT42 External gate
AF91-1005	Suit GT45/GT47 External gate

EXTREME DUTY

AF91-8006	Suit GT25 / GT28 Internal gate
AF91-8000	Suit XR6 / GT30 / GT35 Internal gate
AF91-8001	Suit WRX VF Internal gate
AF91-8002	Suit GT30-35/GT40 External gate
AF91-8004	Suit T04 & GT42 External gate
AF91-8005	Suit GT45/GT47 External gate



BELLMOUTHS

Aeroflow Performance's Bellmouth-style velocity stacks are ideal for achieving maximum air velocity. Manufactured out of spun aluminium, these lightweight Bellmouth velocity stacks increase the volume of air at your compressor inlet. They come in polished and black anodized so they look awesome under the bonnet and you can chose between three sizes to meet your application needs. 76mm (3") bellmouth has a 152.4 mm (6") O.D. so you can run an AeroFlow pod filter.

Part No	Colour	Description
AF64-4070	Polished	76mm (3") inlet
AF64-4070BLK	Black	76mm (3") inlet
AF64-4071	Polished	101mm (4") inlet
AF64-4071BLK	Black	101mm (4") inlet
AF64-4072	Polished	152mm (6") inlet
AF64-4072BLK	Black	152mm (6") inlet



FORD XR6 TURBO SUPPORT BRACKET

Part No	Description
AF64-4369	Turbo water and oil feed line support bracket for Ford XR6 turbo.



Male outlets



Female outlets

BOLT PATTERN

TURBO DRAIN ADAPTER

O-ring seal turbo drain adapters in male or female outlet

Part No	Bolt Pattern	Outlet	Description
AF463-01	36-47.5mm 1-7/16" - 1-7/8"	-8ORB	Female outlet
AF463-02	51mm 2"	-10ORB	Female outlet
AF463-03	52.4mm 2-1/16"	-10ORB	Female outlet
AF463-05	36-47.5mm 1-7/16" - 1-7/8"	-10AN	Male outlet
AF463-06	51mm 2"	-10AN	Male outlet
AF463-07	52.4mm 2-1/16"	-10AN	Male outlet

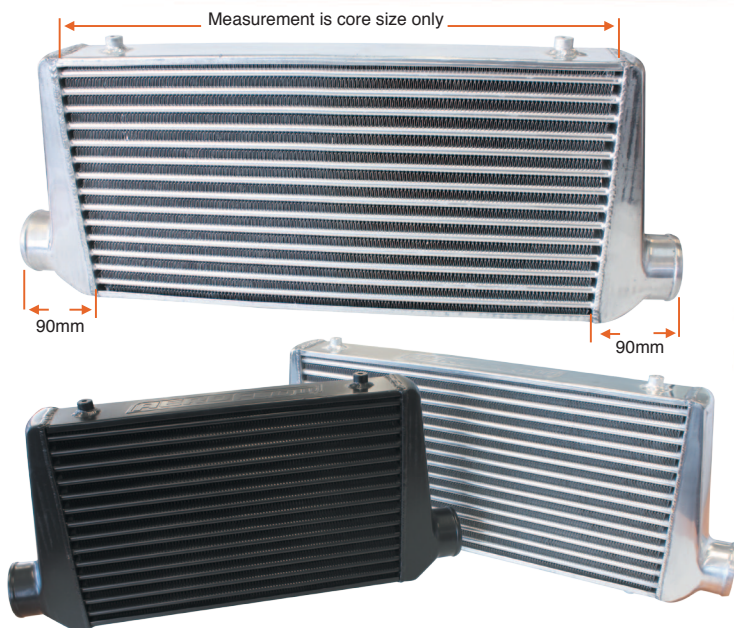
NOTE: 463-01 also suits Mitsubishi Evolution Turbo drain (pan side)



CARBON BELLMOUTHS

Aeroflow Performance Bellmouth-style velocity stacks are ideal for achieving maximum air velocity. Manufactured out of carbon fibre, these lightweight bellmouth velocity stacks increase the volume of air at your compressor inlet. 101mm (4") bellmouth has a 152.4 mm (6") O.D. so you can run an AeroFlow pod filter.

Part No	Finish	Description
AF64-4971BLK	Carbon fibre	101mm (4") inlet



ALUMINIUM INTERCOOLER

Aeroflow intercoolers are designed with a tube and fin core which has the highest thermodynamic dissipative process. Aeroflow tube and fin style intercoolers are available in both polished and black powder coated finishes. These universal intercoolers feature 76mm (3") inlet and outlets. (Intercooler mounts are female M8x1.25 thread) Max Pressure 50 PSI

Part No	Finish	Core size WxHxT	CFM
AF90-1002	Polished	280mm (11") x 300mm (11-13/16") x 76mm (3")	660
AF90-1002BLK	Black	280mm (11") x 300mm (11-13/16") x 76mm (3")	660
AF90-1001	Polished	450mm (17-11/16") x 300mm (11-13/16") x 76mm (3")	540
AF90-1001BLK	Black	450mm (17-11/16") x 300mm (11-13/16") x 76mm (3")	540
AF90-1000	Polished	600mm (23") x 300mm (11-13/16") x 76mm (3")	510
AF90-1000BLK	Black	600mm (23") x 300mm (11-13/16") x 76mm (3")	510
AF90-1004	Polished	600mm (23") x 300mm (11-13/16") x 100mm (4")	715
AF90-1004BLK	Black	600mm (23") x 300mm (11-13/16") x 100mm (4")	715

FORD FG INTERCOOLER KIT

Aeroflow's FG intercooler kits are designed as a direct fit of the Ford FG platform running the turbo barra. With a tube and fin core which has the highest thermodynamic dissipative process. Kits are available in both polished and black powder coated finishes. Max Pressure 50 PSI



Part No	Finish	Core size WxHxT	CFM
AF90-2006	Polished	500mm (19-1/2") x 400mm (15-3/4") x 90mm (3-1/2")	690
AF90-2006BLK	Black	500mm (19-1/2") x 400mm (15-3/4") x 90mm (3-1/2")	690



EXTERNAL WASTEGATE

Aeroflow Performance wastegates are especially designed to maintain set boost levels to protect your engine from overboosting. Aeroflow wastegates feature an internal valve constructed from a high temp NiCrFe based alloy. Other features include a high temperature silicone nomex reinforced actuator diaphragm and stainless steel actuator spring that delivers consistent boost pressure at high temperatures. Nitronic stainless steel is used for the valve seat, and valve bushing which all offer longer product life at extreme temperatures.

Aeroflow wastegates feature water cooling ports (2 x M8 x 1.0mm) for those heavy duty applications. These are optional use and can be disregarded if not required. There are also 3 lower air pressure ports and two top air pressure ports (5 x M10 x 1.00mm) for easy installation this eliminates the need to rotate the actuator top, plugs are included for unused ports.

Aeroflow's wastegates come preset at 1 bar. This can easily be altered by purchasing and installing springs from Aeroflow's accessory range. The wastegate also includes required stainless steel hardware for installation including: valve seat, inlet V-band clamp/flange and outlet V-Band Clamp/flange.

Available in sizes 38mm, 44mm, 50mm and 60mm.

Part No	Colour	Description	Suits
AF9552-1000	Black	38mm (1-1/2") wastegate	
AF9552-1001	Black	44mm (1-47/64") wastegate	
AF9552-1002	Black	50mm (1-31/32") wastegate	
AF9552-1003	Black	60mm (2-23/64") wastegate	

Replacement Inner Springs

AF9552-1101	Yellow	For correct spring selection refer to instruction sheet	All W/gates
AF9552-1102	Green		All W/gates

Replacement Middle Springs

AF9552-1103	Red	available at aeroflowperformance.com or call us on 02 8825 1979	All W/gates
AF9552-1106	White		38, 44mm
AF9552-1104	Blue		38, 44mm
AF9552-1105	Black		38, 44mm

Replacement Outer Springs

AF9552-1107	Brown		44, 50, 60mm
AF9552-1109	Blue		50, 60mm
AF9552-1108	Green		50, 60mm

Replacement Parts for Aeroflow Wastegates

Suits all wastegates

AF351-03SH	Air port fitting stainless steel M10 x 1.0mm to -3an
AF351-04SH	Air port fitting stainless steel M10 x 1.0mm to -4an
AF9552-1200	Air port block off plugs suits all wastegates (Sold individually)
AF9552-1201	Water fittings suits all wastegates (Sold as 2 pack)

38mm wastegate (AF9552-1000) Spare Parts

AF9552-1300	38mm wastegate diaphragm
AF9552-1301	38mm wastegate outlet stainless steel weld on flange
AF9552-1302	38mm wastegate outlet v-band clamp assembly
AF9552-1303	38mm wastegate inlet stainless steel weld on flange
AF9552-1304	38mm wastegate inlet v-band clamp assembly
AF9552-1305	38mm wastegate inlet valve seat

44mm wastegate (AF9552-1001) Spare Parts

AF9552-1400	44mm wastegate diaphragm
AF9552-1401	44mm wastegate outlet stainless steel weld on flange
AF9552-1402	44mm wastegate outlet v-band clamp assembly
AF9552-1403	44mm wastegate inlet stainless steel weld on flange
AF9552-1404	44mm wastegate inlet v-band clamp assembly
AF9552-1405	44mm wastegate inlet valve seat

Replacement Parts for Aeroflow Wastegates Cont...

60mm wastegate (AF9552-1003) Spare Parts

AF9552-1600	60mm wastegate diaphragm
AF9552-1601	60mm wastegate outlet stainless steel weld on flange
AF9552-1602	60mm wastegate outlet v-band clamp assembly
AF9552-1603	60mm wastegate inlet stainless steel weld on flange
AF9552-1604	60mm wastegate inlet v-band clamp assembly
AF9552-1605	60mm wastegate inlet valve seat



50MM BILLET ALUMINIUM BLOW OFF VALVE WITH V-BAND

Aeroflow's 50mm (1-31/32") billet aluminium universal high flow blow off valve is for use on turbo-charged and supercharged applications. The body and all internal components are CNC-machined from 6061-T6 aluminum. 50.5mm (1-63/64") valve. 7mm (1/4") vacuum / boost hose barb size. The flange is v-band design and comes with a 50.8mm (2") weld on pipe.

Part No	Colour	Description
AF64-5050	Polished	50mm (1-31/32") high flow BOV
AF64-5050S	Silver	50mm (1-31/32") high flow BOV
AF64-5050BLK	Black	50mm (1-31/32") high flow BOV
AF59-5052	Aluminium	50mm (1-31/32") weld on flange aluminium
AF59-5053	S/Steel	50mm (1-31/32") weld on flange stainless steel
AF59-5050		Replacement diaphragm & O-Rings
AF59-5051		Replacement billet V-band clamp
AF59-2150	Green	2 psi (.13BAR) Supercharger only spring
AF59-2152	Black	6 psi (.4BAR) Turbo spring (-8 to -12 in/Hg)
AF59-2153	Yellow	11 psi (.75BAR) Turbo spring (-18 to -20 in/Hg)
AF59-5054		Replacement O-Ring



PLUMB BACK BLOW OFF VALVE WITH V-BAND

This 50mm universal plumb-back blow off valve is one of the highest flowing on the market. For use on turbo-charged and supercharged applications. The body and all internal components are CNC-machined from 6061 aluminium alloy. 1.98 in (50.5mm) valve. Oversized 7mm hose barb. 34mm plumb back option included with other sizes sold separately. Flange is v band, and comes with a 2" weld on pipe. Available in both black and polished options.

Part No	Colour	Description
AF64-5051	Polished	50mm (1-31/32") high flow BOV
AF64-5051S	Silver	50mm (1-31/32") high flow BOV
AF64-5051BLK	Black	50mm (1-31/32") high flow BOV
AF59-5052	Aluminium	50mm (1-31/32") weld on flange aluminium
AF59-5053	S/Steel	50mm (1-31/32") weld on flange stainless steel
AF59-5050		Replacement diaphragm & O-Rings
AF59-5051		Replacement billet V-band clamp
AF59-2150	Green	2 psi (.13BAR) Supercharger only spring
AF59-2152	Black	6 psi (.4BAR) Turbo spring (-8 to -12 in/Hg)
AF59-2153	Yellow	11 psi (.75BAR) Turbo spring (-18 to -20 in/Hg)
AF59-5054		Replacement O-Ring



BLOW OFF VALVE ADAPTERS

Aeroflow Performance has designed these blow off valve bolt on adapters for various direct fit applications. They will allow our AF64-5050 and AF64-5051 to be a bolt on item for these suited applications. All in Black anodised finish. New silicon O-ring seal included.

Part No	Suits
AF64-5060BLK	25.4mm (1") clamp on
AF64-5058BLK	38.1mm (1.5") clamp on
AF64-5059BLK	HKS to Aeroflow conversion adapter
AF64-5057BLK	BMW 135, 335, 535 and X5
AF64-5054BLK	Mazda 3, Mazda 6 and CX-7
AF64-5052BLK	Mitsubishi Evolution all models
AF64-5055BLK	Nissan R35 GTR (2 included)
AF64-5053BLK	Subaru WRX 2002 to 2007 and STi 2004 to 2013
AF64-5056BLK	Subaru WRX 2008 to 2013, Liberty 2005 to 2009

PLUMB BACK BARB ADAPTERS

These Plumb back barb options in various sizes to suit the Aeroflow Performance plumb back blow off valve AF64-5051 and AF64-5051blk. Available in both black and polished options to match your blow off valve.



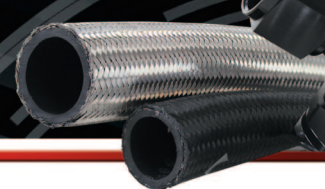
Part No	Colour	Description
AF64-5120	Polished	20mm (25/32") barb adapter
AF64-5120BLK	Black	20mm (25/32") barb adapter
AF64-5125	Polished	25mm (63/64") barb adapter
AF64-5125BLK	Black	25mm (63/64") barb adapter
AF64-5130	Polished	30mm (1-3/16") barb adapter
AF64-5130BLK	Black	30mm (1-3/16") barb adapter
AF64-5133	Polished	33mm (1-5/16") barb adapter
AF64-5133BLK	Black	33mm (1-5/16") barb adapter
AF64-5134	Polished	34mm (1-11/32") barb adapter
AF64-5134BLK	Black	34mm (1-11/32") barb adapter
AF64-5138	Polished	38mm (1-1/2") barb adapter
AF64-5138BLK	Black	38mm (1-1/2") barb adapter

BLOCK OFF PLUGS

These block off plugs made by Aeroflow Performance are designed to block off recirculation hoses when they are not needed after installing your aftermarket blow off valve. These block off plugs are available in the popular sizes 20mm, 25mm, 30mm, 34mm and 38mm and can be purchased in silver or black colour options.



Part No	Colour	Description
AF64-5220	Silver	20mm (25/32") plug
AF64-5220BLK	Black	20mm (25/32") plug
AF64-5225	Silver	25mm (63/64") plug
AF64-5225BLK	Black	25mm (63/64") plug
AF64-5230	Silver	30mm (1-3/16") plug
AF64-5230BLK	Black	30mm (1-3/16") plug
AF64-5233	Silver	33mm (1-5/16") plug
AF64-5233BLK	Black	33mm (1-5/16") plug
AF64-5234	Silver	34mm (1-11/32") plug
AF64-5234BLK	Black	34mm (1-11/32") plug
AF64-5238	Silver	38mm (1-1/2") plug
AF64-5238BLK	Black	38mm (1-1/2") plug



TURBO PROTECTOR SCREENS

Protect your turbocharger and engine internals from debris at the track or on the road. These stainless honeycomb turbo guards cover your turbo's inlet to stop rocks and rubber damaging your impeller and engine.

Part No	Description
AF64-4074	1101.6mm (4") I.D. Suits turbos with 4" front covers
AF64-4075	1278mm (5") I.D. Suits turbos with 5" front covers
AF64-4077	1397mm (5.5") I.D. Suits turbos with 5.5" front covers
AF64-4076	152.4mm (6") I.D. Suits turbos with 6" front covers



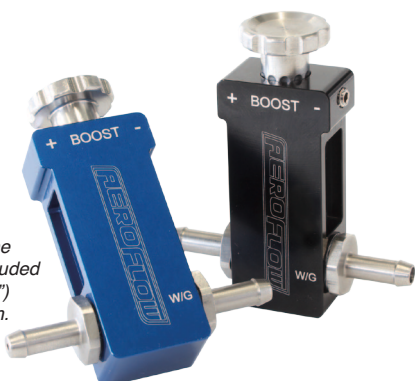
DIGITAL BOOST CONTROLLER

- Three stages of boost pressure, create your personal setting and save them.
- Rapid switching, allows you to switch between settings immediately.
- Over boost alert to prevent turbo and engine damage.
- Scramble function allows burst of power.

Part No	Description
AF49-1039	Electronic boost controller.
AF49-1036	Replacement electronic boost controller solenoid kit

BOOST CONTROLLER TEE

Easily adjustable from under the bonnet, simple fitment with included mounting bracket. 5mm (13/64") barbs. Fast boost gated system.



Part No	Colour	Description
AF64-2096	Blue	Manual boost controller.
AF64-2096BLK	Black	Manual boost controller.

ELECTRONIC BOOST CONTROLLER



- Two stages of boost pressure, create your personal setting and save them.
- Rapid switching, press only one button and switch the setting immediately.
- Over boost alert to prevent turbo and engine damage.
- Pressure limited to 43 PSI (2.9 BAR).

Part No	Description
AF49-1030	Electronic boost controller.
AF49-1036	Replacement electronic boost controller solenoid kit

AF49-1036

Aeroflow's replacement 3 port solenoid kit is supplied complete with fittings, mounting and wiring loom. This handy complete kit is also perfect for use with aftermarket installation to your vehicle to control your boost and set it precisely. This can be custom wired into many late model vehicles by your tune shop. Suits AF49-1030 & AF49-1039



PENCIL TURBO TIMER

- Designed for 12 volt application to protect engine's efficiency and extend turbo life.
- Easily adjust timer from 10 seconds – 19 minutes.
- Also features a built in voltage gauge.
- Slim pencil design for easy mounting.
- 100mm (3-15/16") long 19mm (3/4") diameter

Part No	Description
AF49-1026	Pencil Turbo Timer with memory.

MINI TURBO TIMER

- Designed for 12 volt application to protect engines efficiency and extend turbo life.
- Easily adjust timer from 15 seconds – 3 minutes.
- Mini design for easy mounting.



Part No	Description
AF49-1025	Mini Turbo Timer with memory.



